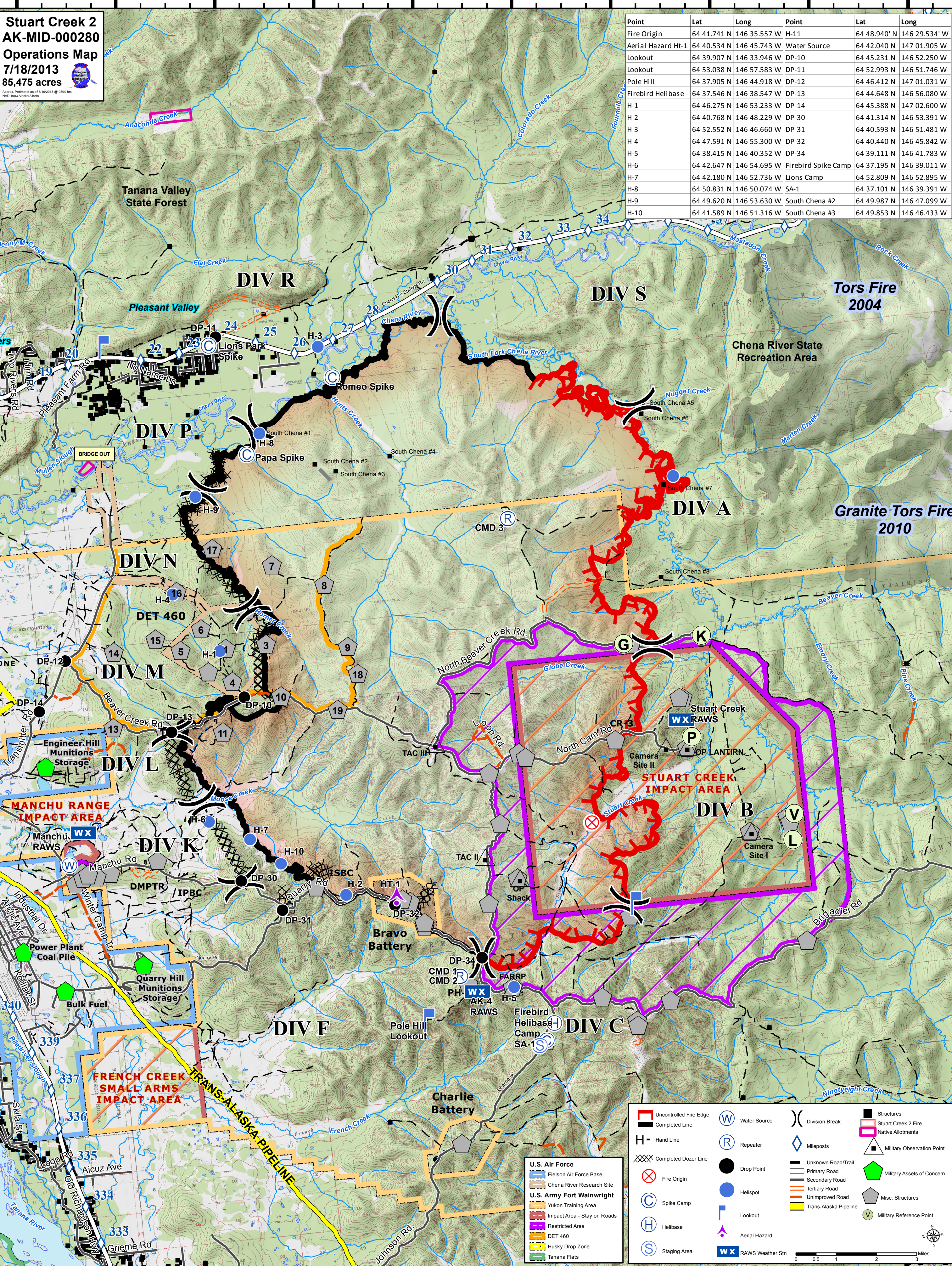


147°0'W 146°55'W 146°50'W 146°45'W 146°40'W 146°35'W 146°30'W 146°25'W 146°20'W 146°15'W

Stuart Creek 2
AK-MID-000280
Operations Map
 7/18/2013
 85,475 acres

Point	Lat	Long	Point	Lat	Long
Fire Origin	64 41.741 N	146 35.557 W	H-11	64 48.940' N	146 29.534' W
Aerial Hazard Ht-1	64 40.534 N	146 45.743 W	Water Source	64 42.040 N	147 01.905 W
Lookout	64 39.907 N	146 33.946 W	DP-10	64 45.231 N	146 52.250 W
Lookout	64 53.038 N	146 57.583 W	DP-11	64 52.993 N	146 51.746 W
Pole Hill	64 37.905 N	146 44.918 W	DP-12	64 46.412 N	147 01.031 W
Firebird Helibase	64 37.546 N	146 38.547 W	DP-13	64 44.648 N	146 56.080 W
H-1	64 46.275 N	146 53.233 W	DP-14	64 45.388 N	147 02.600 W
H-2	64 40.768 N	146 48.229 W	DP-30	64 41.314 N	146 53.391 W
H-3	64 52.552 N	146 46.660 W	DP-31	64 40.593 N	146 51.481 W
H-4	64 47.591 N	146 55.300 W	DP-32	64 40.440 N	146 45.842 W
H-5	64 38.415 N	146 40.352 W	DP-34	64 39.111 N	146 41.783 W
H-6	64 42.647 N	146 54.695 W	Firebird Spike Camp	64 37.195 N	146 39.011 W
H-7	64 42.180 N	146 52.736 W	Lions Camp	64 52.809 N	146 52.895 W
H-8	64 50.831 N	146 50.074 W	SA-1	64 37.101 N	146 39.391 W
H-9	64 49.620 N	146 53.630 W	South Chena #2	64 49.987 N	146 47.099 W
H-10	64 41.589 N	146 51.316 W	South Chena #3	64 49.853 N	146 46.433 W



Uncontrolled Fire Edge	Water Source	Division Break	Structures
Completed Line	Repeater	Mileposts	Stuart Creek 2 Fire
Hand Line	Drop Point	Unknown Road/Trail	Native Allotments
Completed Dozer Line	Helibase	Primary Road	Military Observation Point
Fire Origin	Lookout	Secondary Road	Military Assets of Concern
Spike Camp	Aerial Hazard	Tertiary Road	Misc. Structures
Helibase	Staging Area	Unimproved Road	Military Reference Point
Staging Area	RAWs Weather Stn	Trans-Alaska Pipeline	

- U.S. Air Force**
 - Eielson Air Force Base
 - Chena River Research Site
- U.S. Army Fort Wainwright**
 - Yukon Training Area
 - Impact Area - Stay on Roads
 - Restricted Area
 - DET 460
 - Husky Drop Zone
 - Tanana Flats

64°55'N
64°50'N
64°45'N
64°40'N
64°35'N

147°5'W 147°0'W 146°55'W 146°50'W 146°45'W 146°40'W 146°35'W 146°30'W 146°25'W 146°20'W