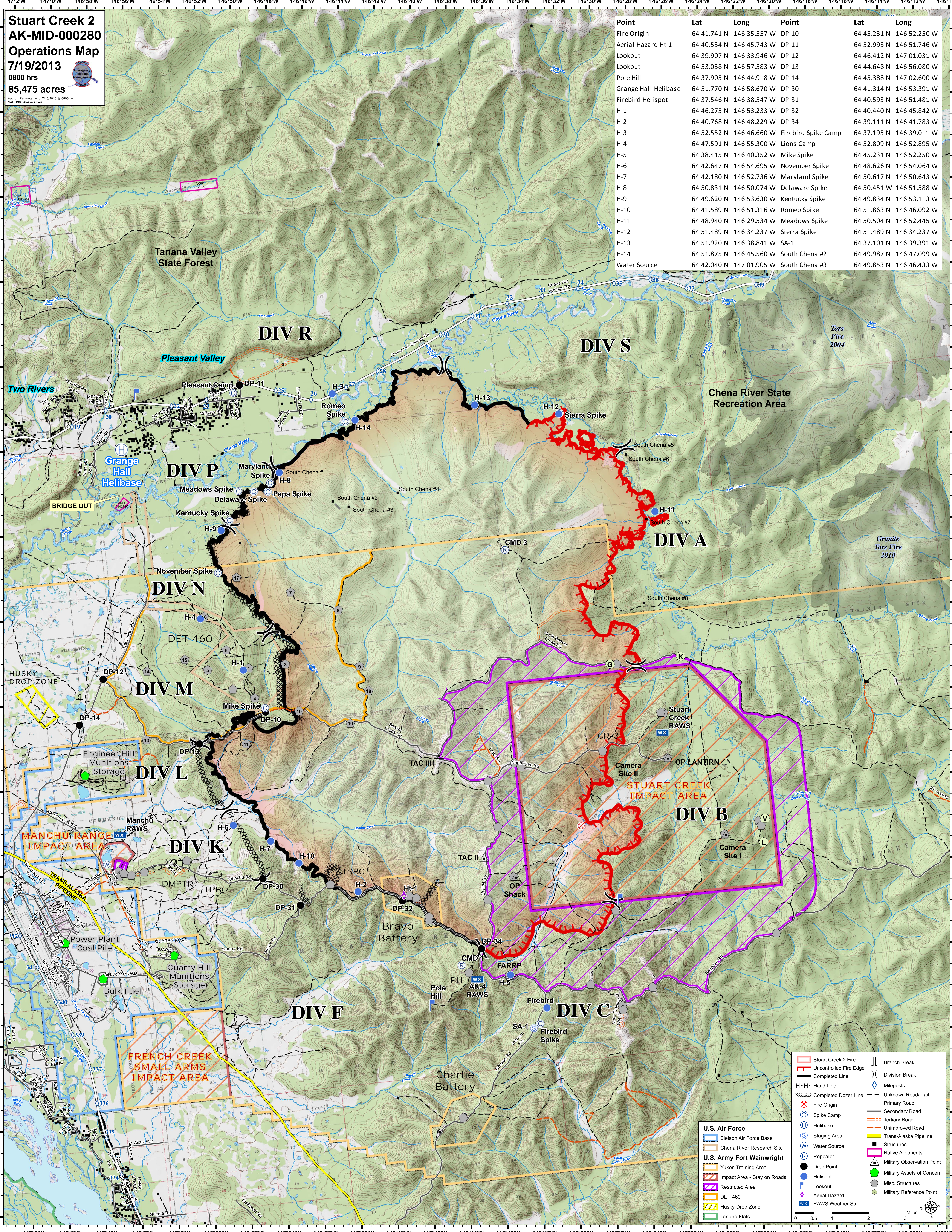


Stuart Creek 2
AK-MID-000280
Operations Map
7/19/2013
0800 hrs
85,475 acres

Point	Lat	Long	Point	Lat	Long
Fire Origin	64 41.741 N	146 35.557 W	DP-10	64 45.231 N	146 52.250 W
Aerial Hazard Ht-1	64 40.534 N	146 45.743 W	DP-11	64 52.993 N	146 51.746 W
Lookout	64 39.907 N	146 33.946 W	DP-12	64 46.412 N	147 01.031 W
Lookout	64 53.038 N	146 57.583 W	DP-13	64 44.648 N	146 56.080 W
Pole Hill	64 37.905 N	146 44.918 W	DP-14	64 45.388 N	147 02.600 W
Grange Hall Helibase	64 51.770 N	146 58.670 W	DP-30	64 41.314 N	146 53.391 W
Firebird Helispot	64 37.546 N	146 38.547 W	DP-31	64 40.593 N	146 51.481 W
H-1	64 46.275 N	146 53.233 W	DP-32	64 40.440 N	146 45.842 W
H-2	64 40.768 N	146 48.229 W	DP-34	64 39.111 N	146 41.783 W
H-3	64 52.552 N	146 46.660 W	Firebird Spike Camp	64 37.195 N	146 39.011 W
H-4	64 47.591 N	146 55.300 W	Lions Camp	64 52.809 N	146 52.895 W
H-5	64 38.415 N	146 40.352 W	Mike Spike	64 45.231 N	146 52.250 W
H-6	64 42.647 N	146 54.695 W	November Spike	64 48.626 N	146 54.064 W
H-7	64 42.180 N	146 52.736 W	Maryland Spike	64 50.617 N	146 50.643 W
H-8	64 50.831 N	146 50.074 W	Delaware Spike	64 50.451 N	146 51.588 W
H-9	64 49.620 N	146 53.630 W	Kentucky Spike	64 49.834 N	146 53.113 W
H-10	64 41.589 N	146 51.316 W	Romeo Spike	64 51.863 N	146 46.092 W
H-11	64 48.940 N	146 29.534 W	Meadows Spike	64 50.504 N	146 52.445 W
H-12	64 51.489 N	146 34.237 W	Sierra Spike	64 51.489 N	146 34.237 W
H-13	64 51.920 N	146 38.841 W	SA-1	64 37.101 N	146 39.391 W
H-14	64 51.875 N	146 45.560 W	South Chena #2	64 49.987 N	146 47.099 W
Water Source	64 42.040 N	147 01.905 W	South Chena #3	64 49.853 N	146 46.433 W



U.S. Air Force

- Eielson Air Force Base
- Chena River Research Site

U.S. Army Fort Wainwright

- Yukon Training Area
- Impact Area - Stay on Roads
- Restricted Area
- DET 460
- Husky Drop Zone
- Tanana Flats

Legend

- Stuart Creek 2 Fire
- Uncontrolled Fire Edge
- Completed Line
- Completed Dozer Line
- Branch Break
- Division Break
- Mileposts
- Unknown Road/Trail
- Primary Road
- Secondary Road
- Tertiary Road
- Unimproved Road
- Trans-Alaska Pipeline
- Structures
- Native Allotments
- Military Observation Point
- Military Assets of Concern
- Misc. Structures
- Military Reference Point

Scale: 0 0.5 1 2 3 Miles