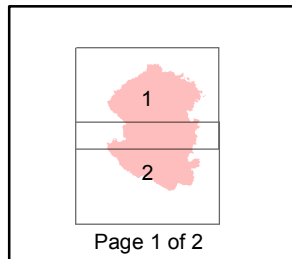
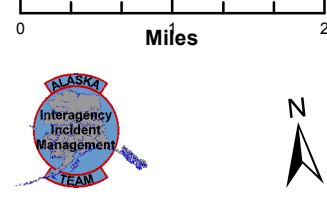
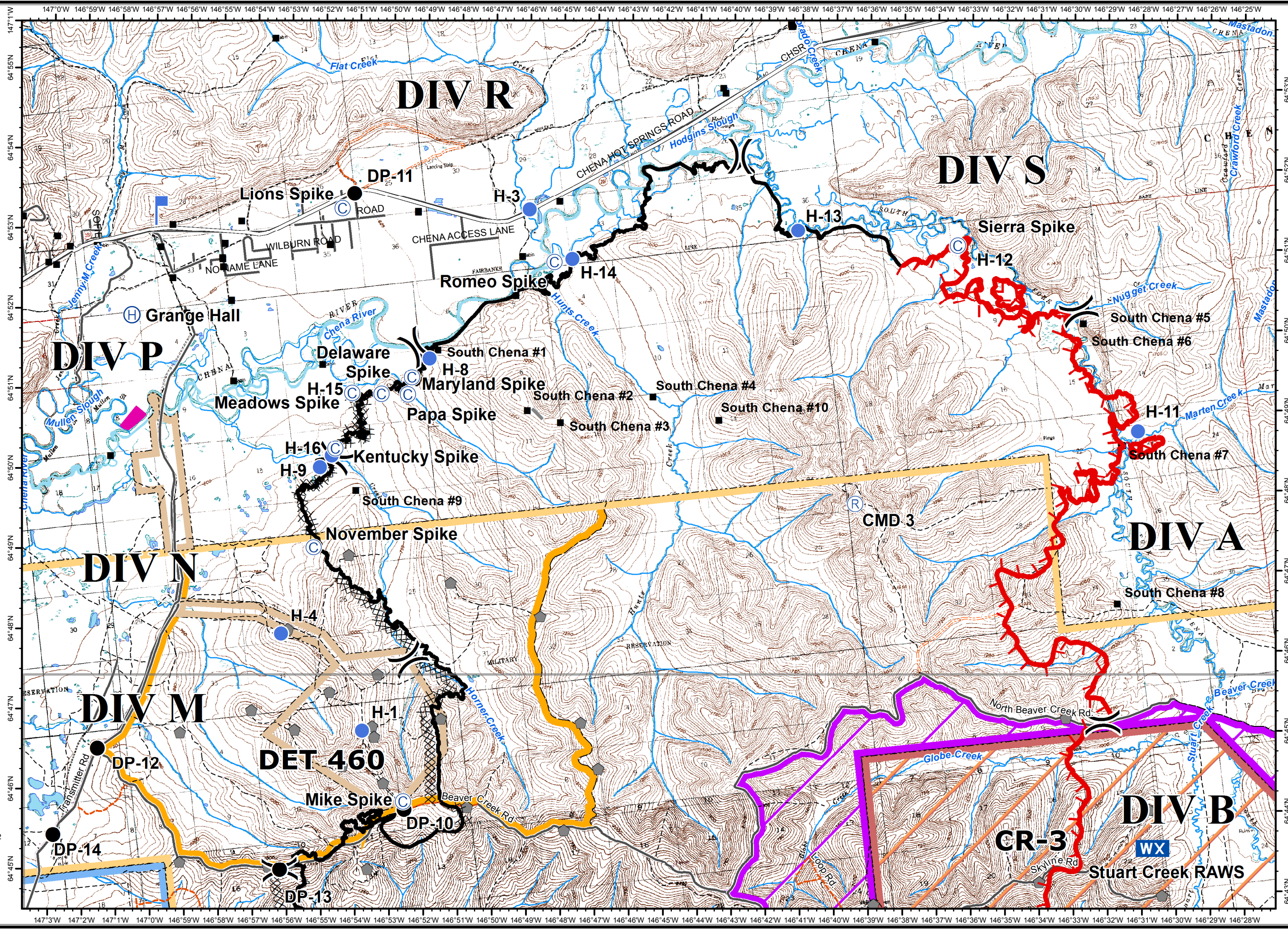


Stuart Creek 2
AK-MID-000280
IAP Map
NAD 1983
07/20/2013
Day Shift
Approx: 85,475 ac
Perimeter as of: 07/16/13
0800hrs

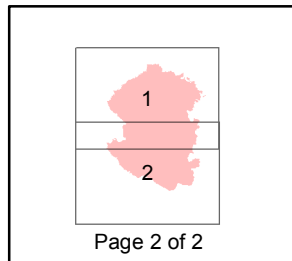


- () Division
- ⚡ Aerial Hazard
- (R) Repeater
- (C) Camp
- Drop Point
- ⊗ Fire Origin
- (H) Helibase
- Helispot
- ⚡ Lookout
- WX Mobile Weather Unit
- (S) Staging Area
- (W) Water Source
- ▬ Uncontrolled Fire Edge
- XXXX Completed Dozer Line
- ▬ Completed Line
- H - Hand Line
- ⊕ Native Allotments
- Known Sites
- ⬢ Miscellaneous Structures
- ⚠ Military Obsv Point
- U.S. Air Force**
- ✈ Eielson Air Force Base
- 🏠 Chena River Research Site
- U.S. Army Fort Wainwright**
- 🏠 Yukon Training Area
- 🏠 Impact Area - Stay on Roads
- 🚫 Restricted Area
- 🚫 DET 460
- 🚫 Husky Drop Zone



147°3'W 147°2'W 147°1'W 147°0'W 146°59'W 146°58'W 146°57'W 146°56'W 146°55'W 146°54'W 146°53'W 146°52'W 146°51'W 146°50'W 146°49'W 146°48'W 146°47'W 146°46'W 146°45'W 146°44'W 146°43'W 146°42'W 146°41'W 146°40'W 146°39'W 146°38'W 146°37'W 146°36'W 146°35'W 146°34'W 146°33'W 146°32'W 146°31'W 146°30'W 146°29'W 146°28'W 146°27'W 146°26'W 146°25'W

Stuart Creek 2
AK-MID-000280
IAP Map
NAD 1983
07/20/2013
Day Shift
Approx: 85,475 ac
Perimeter as of: 07/16/13
0800hrs



- () Division
- ⚡ Aerial Hazard
- Ⓡ Repeater
- Ⓢ Camp
- Drop Point
- ⊗ Fire Origin
- Ⓜ Helibase
- Helispot
- Ⓛ Lookout
- WX Mobile Weather Unit
- Ⓢ Staging Area
- Ⓜ Water Source
- Ⓛ Uncontrolled Fire Edge
- Ⓛ Completed Dozer Line
- Completed Line
- H - Hand Line
- Ⓛ Native Allotments
- Known Sites
- Ⓛ Miscellaneous Structures
- Ⓛ Military Obsv Point
- U.S. Air Force**
- Ⓛ Eielson Air Force Base
- Ⓛ Chena River Research Site
- U.S. Army Fort Wainwright**
- Ⓛ Yukon Training Area
- Ⓛ Impact Area - Stay on Roads
- Ⓛ Restricted Area
- Ⓛ DET 460
- Ⓛ Husky Drop Zone

