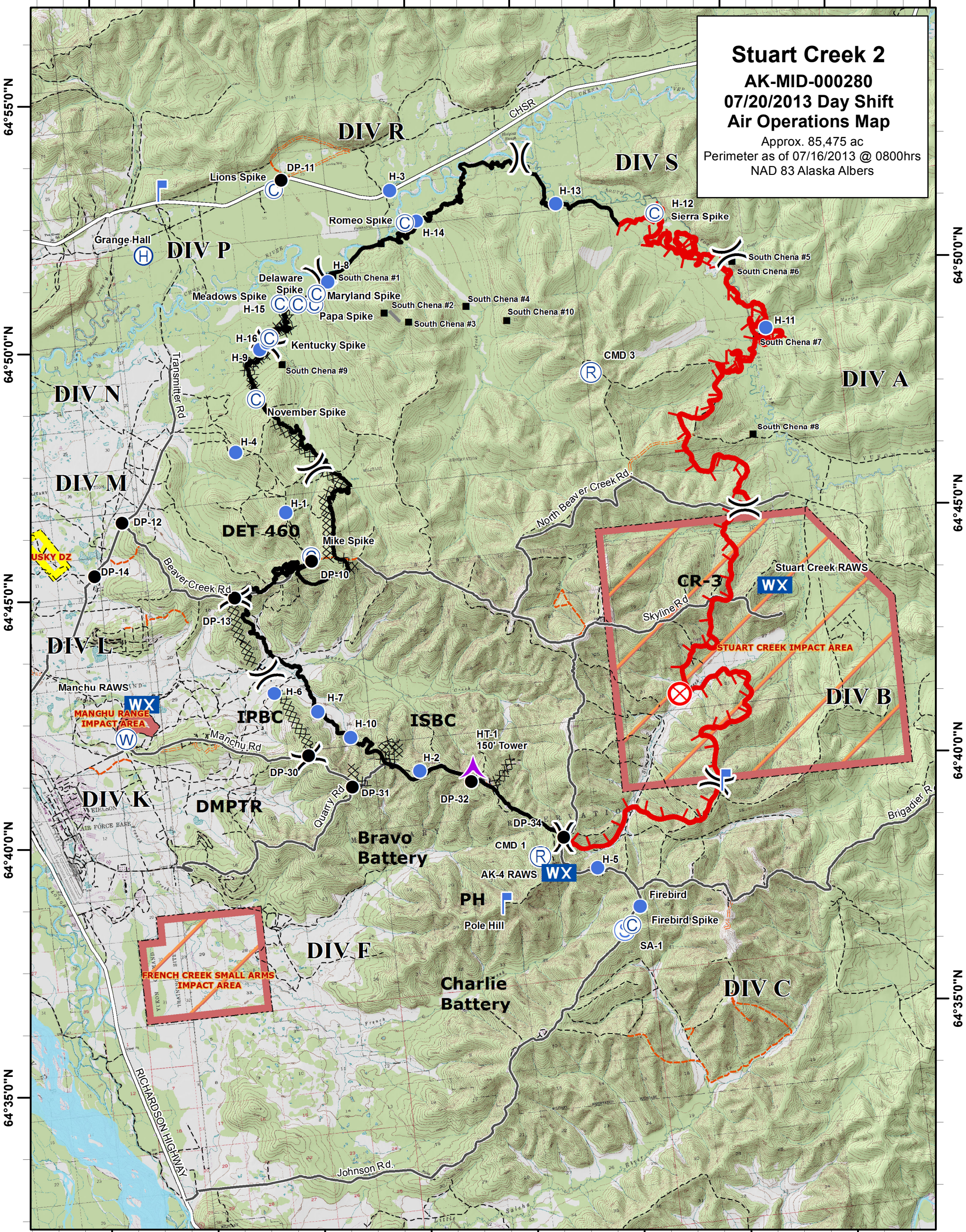


147°0'0"W 146°55'0"W 146°50'0"W 146°45'0"W 146°40'0"W 146°35'0"W 146°30'0"W 146°25'0"W 146°20'0"W

Stuart Creek 2
AK-MID-000280
07/20/2013 Day Shift
Air Operations Map
 Approx. 85,475 ac
 Perimeter as of 07/16/2013 @ 0800hrs
 NAD 83 Alaska Albers



147°5'0"W 147°0'0"W 146°55'0"W 146°50'0"W 146°45'0"W 146°40'0"W 146°35'0"W 146°30'0"W

| | | | | | | | |
|--|---------------|--|---------------------|--|------------------------|--|-----------------------------|
| | Aerial Hazard | | Lookout | | Division | | Impact Area - Stay on Roads |
| | Camp | | Mobile Weather Unit | | Uncontrolled Fire Edge | | Husky Drop Zone |
| | Drop Point | | Repeater | | Completed Dozer Line | | |
| | Fire Origin | | Staging Area | | Completed Line | | |
| | Helibase | | Water Source | | H - H - Hand Line | | |
| | Helispot | | | | | | |

Frequently Used Coordinates

| Point | Latitude | Longitude | Notes |
|----------------------|--------------|---------------|---|
| Fire Origin | 64 41.741 N | 146 35.557 W | |
| Aerial Hazard Ht-1 | 64 40.534 N | 146 45.743 W | AERIAL HAZARD 150 ft tower Ht-1 |
| Lookout | 64 39.907 N | 146 33.946 W | |
| Lookout | 64 53.038 N | 146 57.583 W | |
| Pole Hill | 64 37.905 N | 146 44.918 W | |
| Grange Hall Helibase | 64 51.770 N | 146 58.670 W | |
| Firebird Helispot | 64 37.546 N | 146 38.547 W | |
| H-1 | 64 46.275 N | 146 53.233 W | Good for type 2 & 3 helicopters |
| H-2 | 64 40.768 N | 146 48.229 W | Good for Type 1, 2, and 3 helicopters |
| H-3 | 64 52.552 N | 146 46.660 W | Good for medivac & troops. Type 1, 2, & 3 helicopters |
| H-4 | 64 47.591 N | 146 55.300 W | Good for medivac & troops. Type 2, & 3 helicopters |
| H-5 | 64 38.415 N | 146 40.352 W | |
| H-6 | 64 42.647 N | 146 54.695 W | |
| H-7 | 64 42.180 N | 146 52.736 W | |
| H-8 | 64 50.831 N | 146 50.074 W | |
| H-9 | 64 49.620 N | 146 53.630 W | |
| H-10 | 64 41.589 N | 146 51.316 W | Log Deck; good for Type 2 & 3 helicopters |
| H-11 | 64 48.940' N | 146 29.534' W | Log Deck; good for Type 2 & 3 helicopters |
| H-12 | 64 51.489 N | 146 34.237 W | |
| H-13 | 64 51.920 N | 146 38.841 W | |
| H-14 | 64 51.875 N | 146 45.560 W | |
| H-15 | 64 50.495 N | 146 52.449 W | |
| H-16 | 64 49.747 N | 146 53.253 W | |
| Water Source | 64 42.040 N | 147 01.905 W | |
| DP-10 | 64 45.231 N | 146 52.250 W | |
| DP-11 | 64 52.993 N | 146 51.746 W | |
| DP-12 | 64 46.412 N | 147 01.031 W | |
| DP-13 | 64 44.648 N | 146 56.080 W | |
| DP-14 | 64 45.388 N | 147 02.600 W | |
| DP-30 | 64 41.314 N | 146 53.391 W | |
| DP-31 | 64 40.593 N | 146 51.481 W | |
| DP-32 | 64 40.440 N | 146 45.842 W | |
| DP-34 | 64 39.111 N | 146 41.783 W | |
| Firebird Spike | 64 37.195 N | 146 39.011 W | |
| Lions Spike | 64 52.809 N | 146 52.895 W | |
| Mike Spike | 64 45.231 N | 146 52.250 W | |
| November Spike | 64 48.626 N | 146 54.064 W | |
| Maryland Spike | 64 50.617 N | 146 50.643 W | |
| Delaware Spike | 64 50.451 W | 146 51.588 W | |
| Kentucky Spike | 64 49.834 N | 146 53.113 W | |
| Romeo Spike | 64 51.863 N | 146 46.092 W | |
| Meadows Spike | 64 50.504 N | 146 52.445 W | |
| Sierra Spike | 64 51.489 N | 146 34.237 W | |
| SA-1 | 64 37.101 N | 146 39.391 W | |
| South Chena #2 | 64 49.987 N | 146 47.099 W | Helitack must protect |
| South Chena #3 | 64 49.853 N | 146 46.433 W | Helitack must protect |
| Sling Site 1 | 64 50.829 N | 146 50.059 W | |
| Sling Site 2 | 64 50.409 N | 146 50.804 W | |
| Sling Site 3 | 64 50.428 N | 146 51.518 W | |
| Sling Site 4 | 64 50.572 N | 146 52.458 W | |
| Sling Site 5 | 64 49.988 N | 146 52.330 W | |
| Sling Site 6 | 64 49.852 N | 146 53.069 W | |
| Sling Site 7 | 64 50.626 N | 146 50.571 W | |