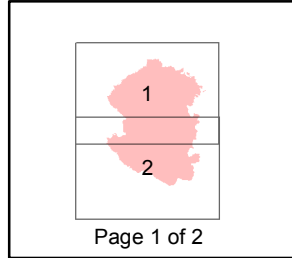
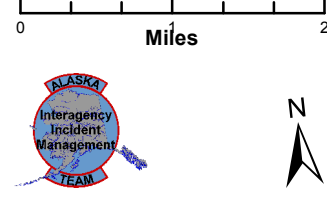
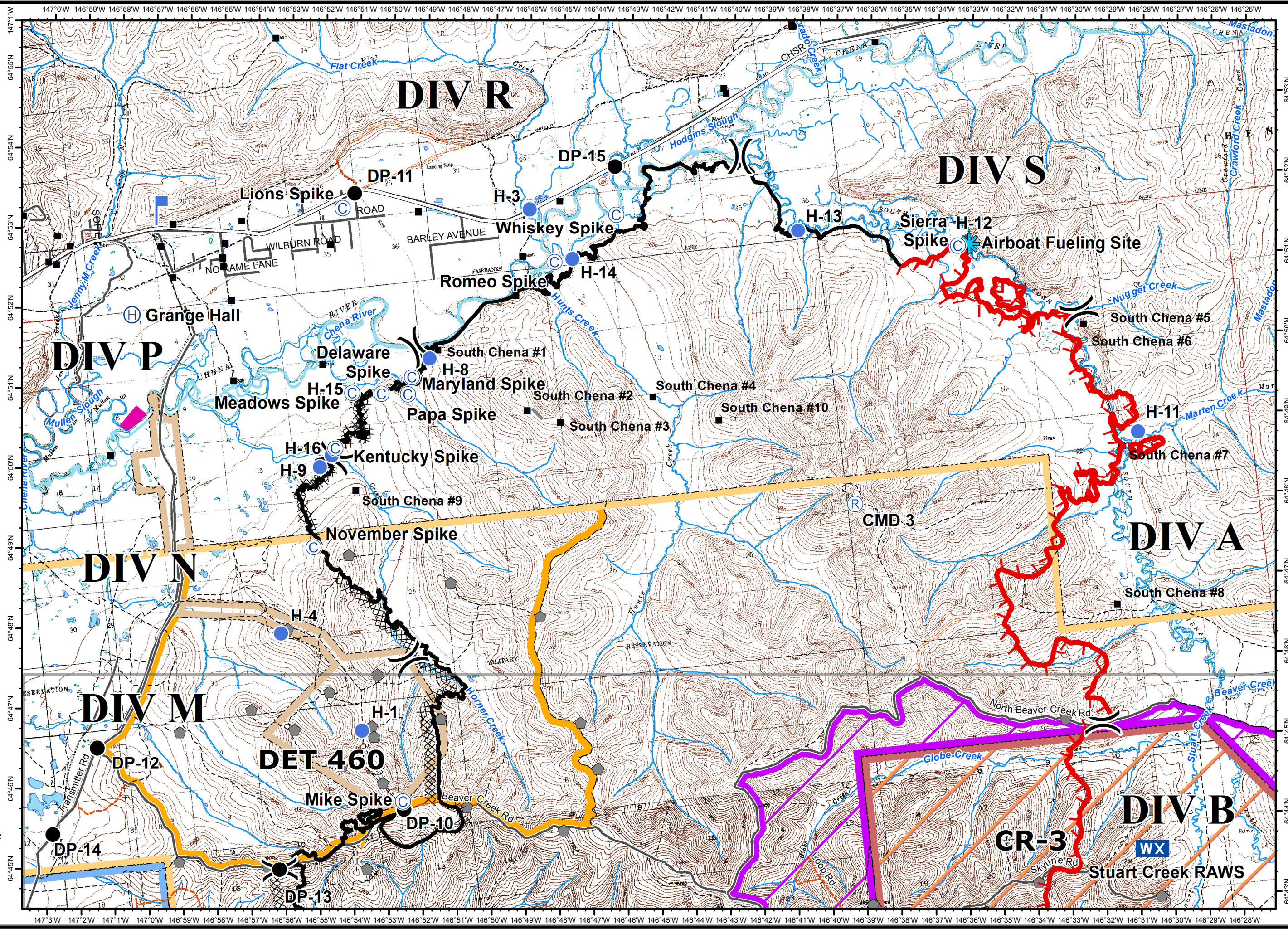


**Stuart Creek 2**  
**AK-MID-000280**  
**IAP Map**  
**NAD 1983**  
**07/21/2013**  
**Day Shift**  
**Approx: 85,475 ac**  
**Perimeter as of: 07/16/13**  
**0800hrs**

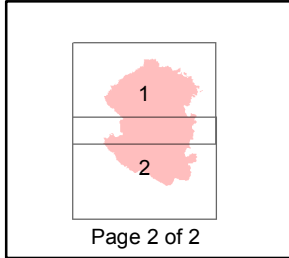


- (X) Division
- ✪ Airboat Fueling Site
- ⚡ Aerial Hazard
- Ⓡ Repeater
- Ⓢ Camp
- Drop Point
- ⊗ Fire Origin
- Ⓜ Helibase
- Helispot
- Ⓛ Lookout
- WX Mobile Weather Unit
- Ⓢ Staging Area
- Ⓜ Water Source
- ▬ Uncontrolled Fire Edge
- XXXX Completed Dozer Line
- ▬ Completed Line
- H - Hand Line
- Ⓜ Native Allotments
- Known Sites
- Ⓜ Miscellaneous Structures
- Ⓜ Military Obsv Point
- U.S. Air Force**
- Ⓜ Eielson Air Force Base
- Ⓜ Chena River Research Site
- U.S. Army Fort Wainwright**
- Ⓜ Yukon Training Area
- Ⓜ Impact Area - Stay on Roads
- Ⓜ Restricted Area
- Ⓜ DET 460
- Ⓜ Husky Drop Zone





**Stuart Creek 2**  
**AK-MID-000280**  
**IAP Map**  
**NAD 1983**  
**07/21/2013**  
**Day Shift**  
**Approx: 85,475 ac**  
**Perimeter as of: 07/16/13**  
**0800hrs**



- ( ) Division
- ✪ Airboat Fueling Site
- ⚡ Aerial Hazard
- Ⓡ Repeater
- Ⓢ Camp
- Drop Point
- ⊗ Fire Origin
- Ⓜ Helibase
- Helispot
- Ⓛ Lookout
- WX Mobile Weather Unit
- Ⓢ Staging Area
- Ⓜ Water Source
- ⚡ Uncontrolled Fire Edge
- XXXX Completed Dozer Line
- Completed Line
- H - Hand Line
- Ⓜ Native Allotments
- Known Sites
- Ⓜ Miscellaneous Structures
- Ⓜ Military Obsv Point
- U.S. Air Force**
- Ⓜ Eielson Air Force Base
- Ⓜ Chena River Research Site
- U.S. Army Fort Wainwright**
- Ⓜ Yukon Training Area
- Ⓜ Impact Area - Stay on Roads
- Ⓜ Restricted Area
- Ⓜ DET 460
- Ⓜ Husky Drop Zone

