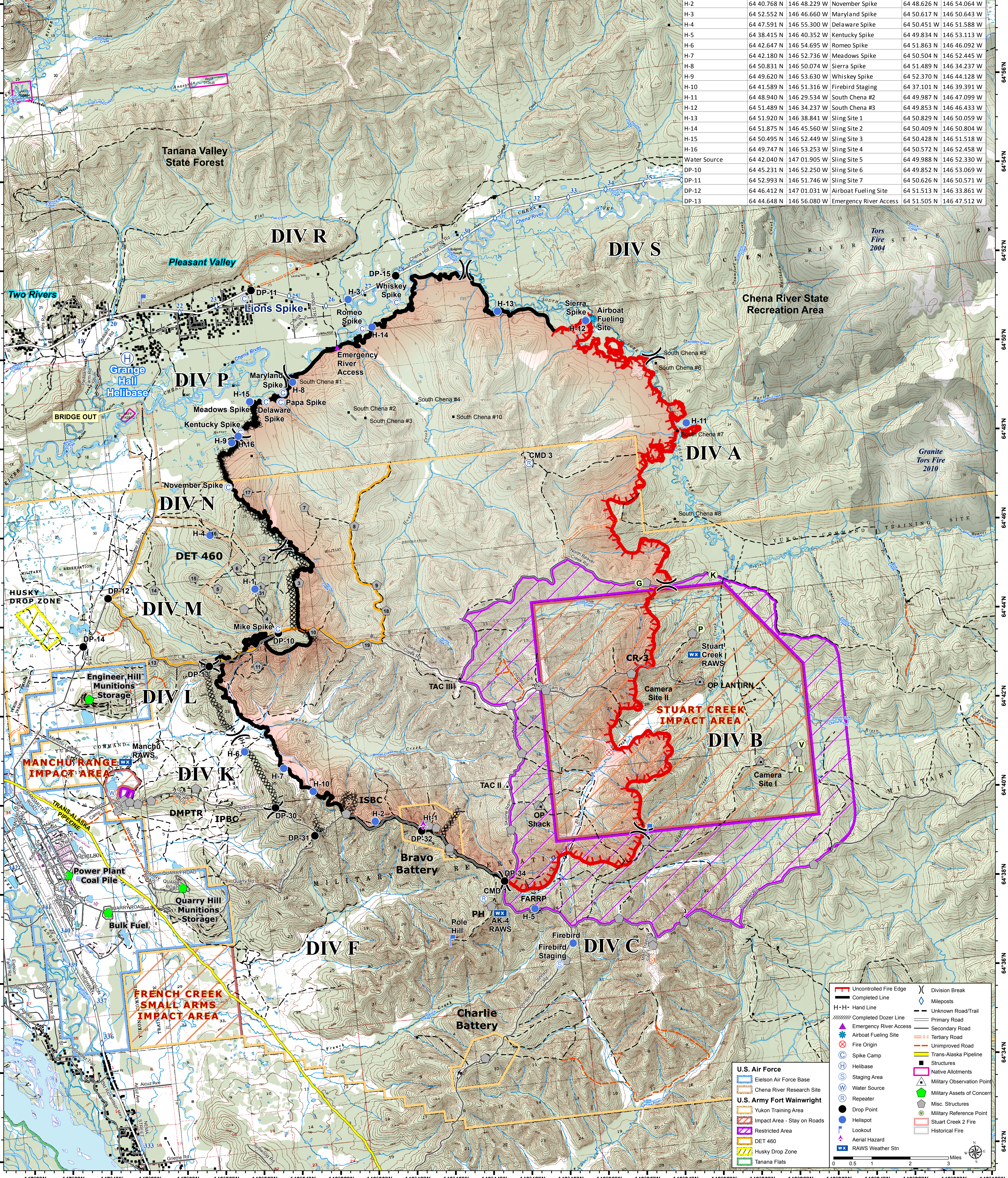


147°2'W 147°0'W 146°58'W 146°56'W 146°54'W 146°52'W 146°50'W 146°48'W 146°46'W 146°44'W 146°42'W 146°40'W 146°38'W 146°36'W 146°34'W 146°32'W 146°30'W 146°28'W 146°26'W 146°24'W 146°22'W 146°20'W 146°18'W 146°16'W 146°14'W 146°12'W 146°10'W

Stuart Creek 2
AK-MID-000280
Operations Map
7/22/2013
0800 hrs
85,475 acres

Point	Lat	Long	Point	Lat	Long
Fire Origin	64 41.741 N	146 35.557 W	DP-14	64 45.388 N	147 02.600 W
Aerial Hazard Ht-1	64 40.534 N	146 45.743 W	DP-15	64 52.971 N	146 44.011 W
Lookout	64 39.907 N	146 33.946 W	DP-30	64 41.314 N	146 53.391 W
Lookout	64 53.038 N	146 57.583 W	DP-31	64 40.593 N	146 51.481 W
Pole Hill	64 37.905 N	146 44.918 W	DP-32	64 40.440 N	146 45.842 W
Grange Hall Helibase	64 51.770 N	146 58.670 W	DP-34	64 39.111 N	146 41.783 W
Firebird Helispot	64 37.546 N	146 38.547 W	Lions Spike	64 52.809 N	146 52.895 W
H-1	64 46.275 N	146 53.233 W	Mike Spike	64 45.231 N	146 52.250 W
H-2	64 40.768 N	146 48.229 W	November Spike	64 48.626 N	146 54.064 W
H-3	64 52.552 N	146 46.660 W	Maryland Spike	64 50.617 N	146 50.643 W
H-4	64 47.591 N	146 55.300 W	Delaware Spike	64 50.451 N	146 51.588 W
H-5	64 38.415 N	146 40.352 W	Kentucky Spike	64 49.834 N	146 53.113 W
H-6	64 42.647 N	146 54.695 W	Romeo Spike	64 51.863 N	146 46.092 W
H-7	64 42.180 N	146 52.736 W	Meadows Spike	64 50.504 N	146 52.445 W
H-8	64 50.831 N	146 50.074 W	Sierra Spike	64 51.489 N	146 34.237 W
H-9	64 49.620 N	146 53.630 W	Whiskey Spike	64 52.370 N	146 44.128 W
H-10	64 41.589 N	146 51.316 W	Firebird Staging	64 37.101 N	146 39.391 W
H-11	64 48.940 N	146 29.534 W	South Chena #2	64 49.987 N	146 47.099 W
H-12	64 51.489 N	146 34.237 W	South Chena #3	64 49.853 N	146 46.433 W
H-13	64 51.920 N	146 38.841 W	Sling Site 1	64 50.829 N	146 50.059 W
H-14	64 51.875 N	146 45.560 W	Sling Site 2	64 50.409 N	146 50.804 W
H-15	64 50.495 N	146 52.449 W	Sling Site 3	64 50.428 N	146 51.518 W
H-16	64 49.747 N	146 53.253 W	Sling Site 4	64 50.572 N	146 52.458 W
Water Source	64 42.040 N	147 01.905 W	Sling Site 5	64 49.988 N	146 52.330 W
DP-10	64 45.231 N	146 52.250 W	Sling Site 6	64 49.852 N	146 53.069 W
DP-11	64 52.993 N	146 51.746 W	Sling Site 7	64 50.626 N	146 50.571 W
DP-12	64 46.412 N	147 01.031 W	Airboat Fueling Site	64 51.513 N	146 33.861 W
DP-13	64 44.648 N	146 56.080 W	Emergency River Access	64 51.505 N	146 47.512 W



147°8'W 147°6'W 147°4'W 147°2'W 147°0'W 146°58'W 146°56'W 146°54'W 146°52'W 146°50'W 146°48'W 146°46'W 146°44'W 146°42'W 146°40'W 146°38'W 146°36'W 146°34'W 146°32'W 146°30'W 146°28'W 146°26'W 146°24'W 146°22'W 146°20'W 146°18'W