

146°54'W

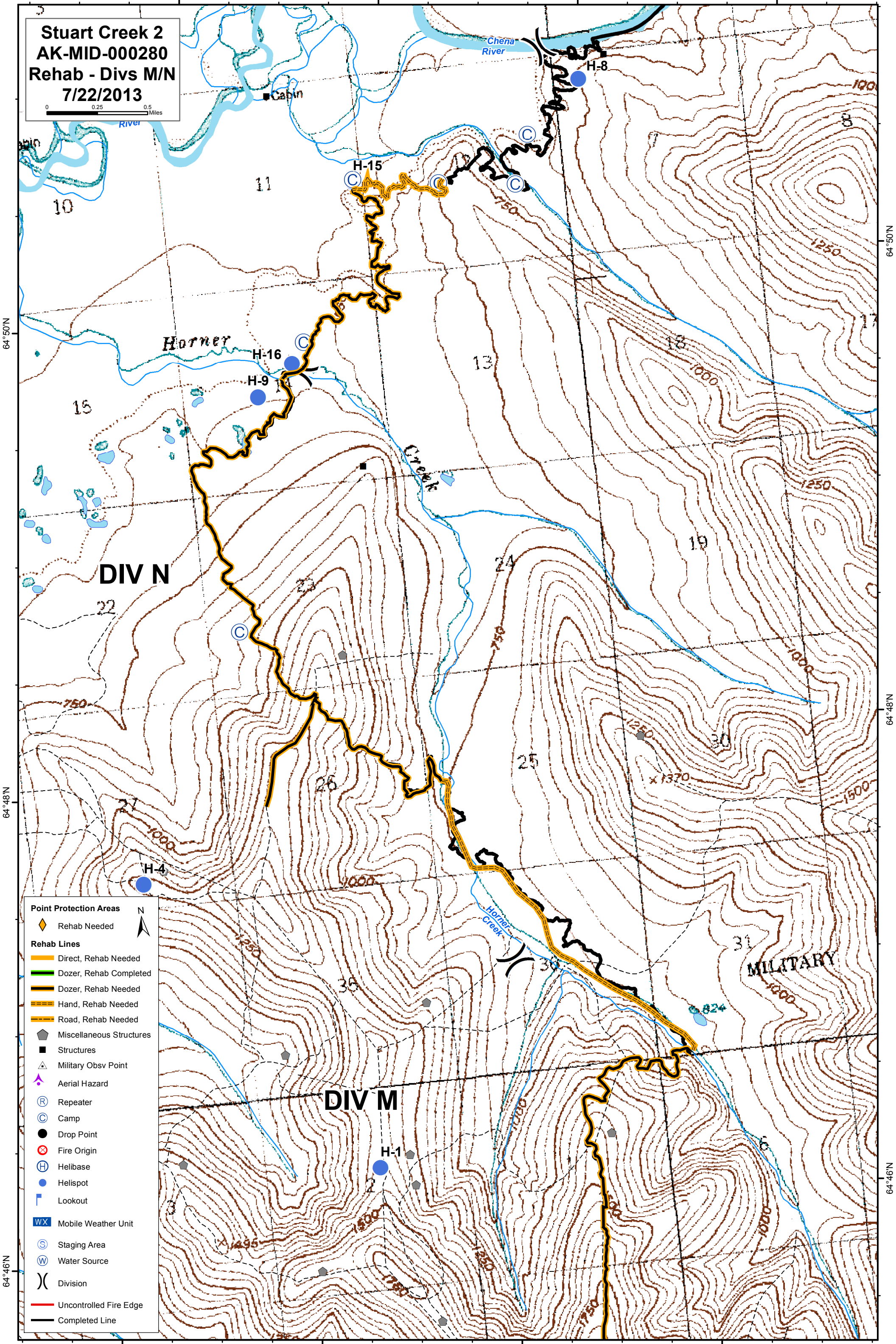
146°52'W

146°50'W

146°48'W

Stuart Creek 2
AK-MID-000280
Rehab - Divs M/N
7/22/2013

0 0.25 0.5 Miles



- Point Protection Areas**
- ◆ Rehab Needed
- Rehab Lines**
- Direct, Rehab Needed
 - Dozer, Rehab Completed
 - Dozer, Rehab Needed
 - Hand, Rehab Needed
 - Road, Rehab Needed
- Other Symbols:**
- ▣ Miscellaneous Structures
 - Structures
 - ▲ Military Obsv Point
 - ▲ Aerial Hazard
 - Ⓡ Repeater
 - Ⓢ Camp
 - Drop Point
 - ⊗ Fire Origin
 - Ⓜ Helibase
 - Helispot
 - Ⓛ Lookout
 - WX Mobile Weather Unit
 - Ⓢ Staging Area
 - Ⓜ Water Source
 -) Division
 - Uncontrolled Fire Edge
 - Completed Line

64°50'N

64°50'N

64°48'N

64°48'N

64°46'N

64°46'N

146°56'W

146°54'W

146°52'W

146°50'W