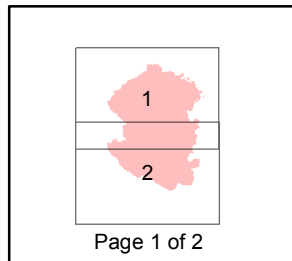
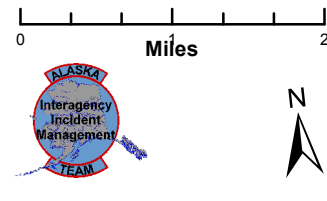
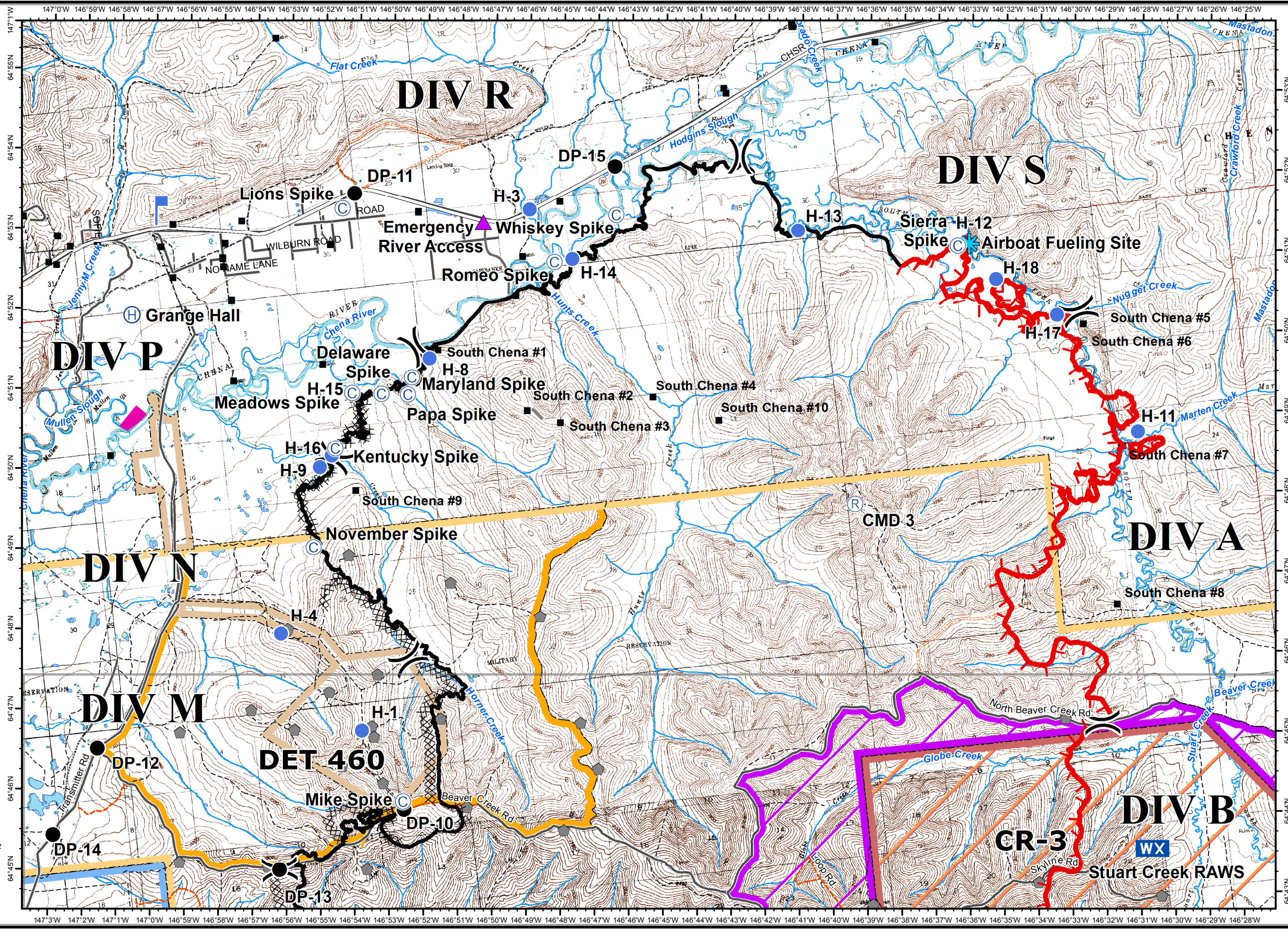


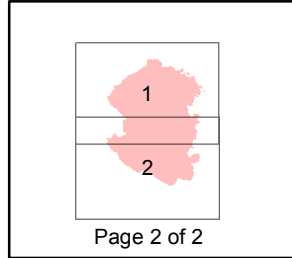
Stuart Creek 2
AK-MID-000280
IAP Map
NAD 1983
07/23/2013
Day Shift
Approx: 85,475 ac
Perimeter as of: 07/16/13
0800hrs



- () Division
- ▲ Emergency River Access
- ✪ Airboat Fueling Site
- ⚡ Aerial Hazard
- Ⓡ Repeater
- Ⓢ Camp
- Drop Point
- ⊗ Fire Origin
- Ⓜ Helibase
- Ⓟ Helispot
- 🔍 Lookout
- WX Mobile Weather Unit
- Ⓢ Staging Area
- Ⓜ Water Source
- 🔴 Uncontrolled Fire Edge
- XXXX Completed Dozer Line
- Completed Line
- H - Hand Line
- ▣ Miscellaneous Structures
- ▣ Known Sites
- ⚠ Military Obsv Point
- 🏠 Native Allotments
- U.S. Air Force**
- ✈ Eielson Air Force Base
- 🏠 Chena River Research Site
- U.S. Army Fort Wainwright**
- 🏠 Yukon Training Area
- 🏠 Impact Area - Stay on Roads
- 🏠 Restricted Area
- 🏠 DET 460
- 🏠 Husky Drop Zone



Stuart Creek 2
AK-MID-000280
IAP Map
NAD 1983
07/23/2013
Day Shift
Approx: 85,475 ac
Perimeter as of: 07/16/13
0800hrs



- () Division
- ▲ Emergency River Access
- ✪ Airboat Fueling Site
- ✧ Aerial Hazard
- Ⓡ Repeater
- Ⓢ Camp
- Drop Point
- ⊗ Fire Origin
- Ⓜ Helibase
- Helispot
- Ⓛ Lookout
- WX Mobile Weather Unit
- Ⓢ Staging Area
- Ⓜ Water Source
- Ⓛ Uncontrolled Fire Edge
- XXXX Completed Dozer Line
- Completed Line
- H - Hand Line
- Miscellaneous Structures
- Known Sites
- ▲ Military Obsv Point
- ✦ Native Allotments
- U.S. Air Force**
- Eielson Air Force Base
- Chena River Research Site
- U.S. Army Fort Wainwright**
- Yukon Training Area
- Impact Area - Stay on Roads
- Restricted Area
- DET 460
- Husky Drop Zone

