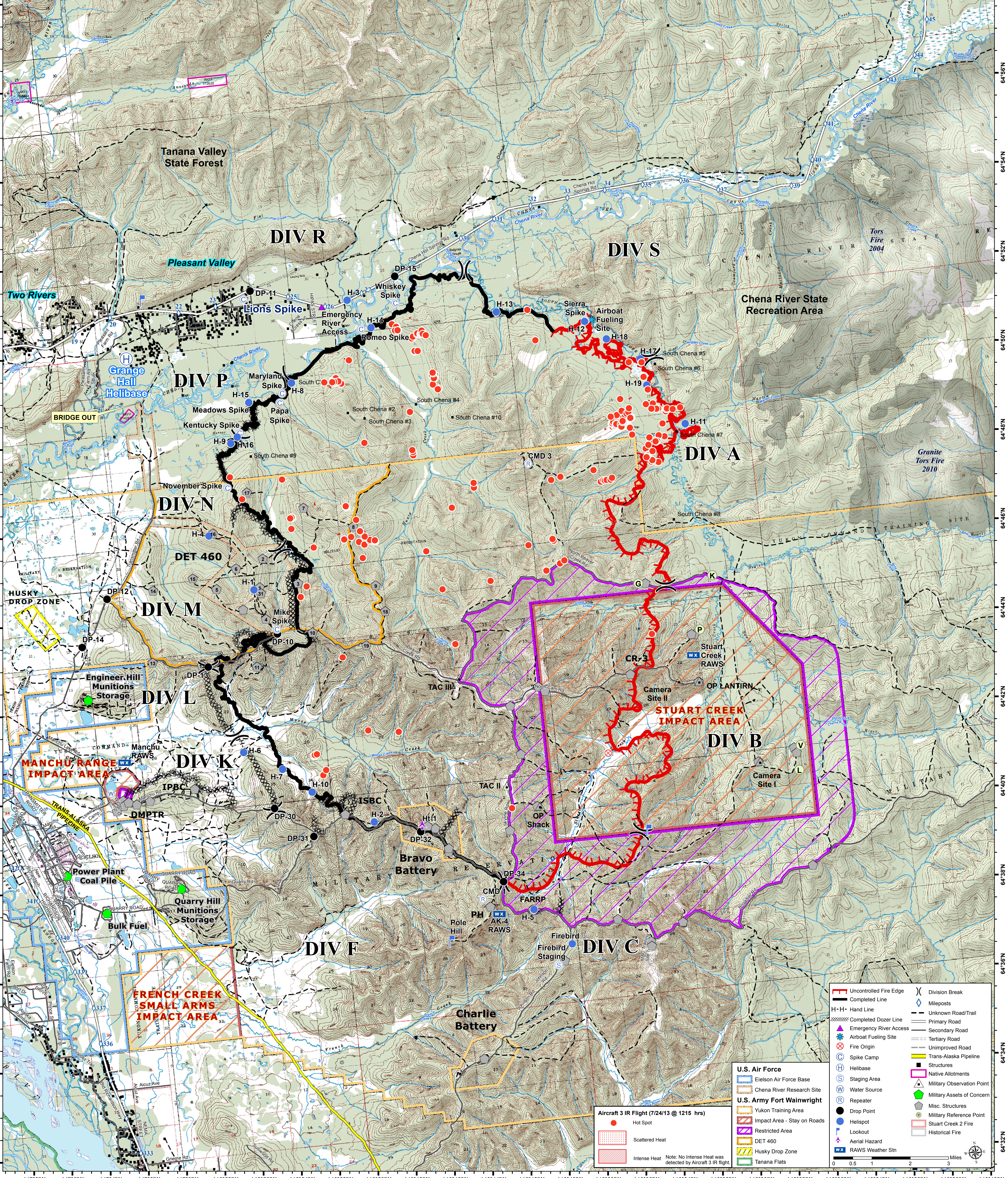


147°2'W 147°0'W 146°58'W 146°56'W 146°54'W 146°52'W 146°50'W 146°48'W 146°46'W 146°44'W 146°42'W 146°40'W 146°38'W 146°36'W 146°34'W 146°32'W 146°30'W 146°28'W 146°26'W 146°24'W 146°22'W 146°20'W 146°18'W 146°16'W 146°14'W 146°12'W 146°10'W

Stuart Creek 2
AK-MID-000280
IR Map
7/24/2013
0600 hrs
85,475 acres



147°8'W 147°6'W 147°4'W 147°2'W 147°0'W 146°58'W 146°56'W 146°54'W 146°52'W 146°50'W 146°48'W 146°46'W 146°44'W 146°42'W 146°40'W 146°38'W 146°36'W 146°34'W 146°32'W 146°30'W 146°28'W 146°26'W 146°24'W 146°22'W 146°20'W 146°18'W 146°16'W 146°14'W 146°12'W 146°10'W

	Uncontrolled Fire Edge		Division Break
	Completed Line		Mileposts
	Hand Line		Unknown Road/Trail
	Completed Dozer Line		Primary Road
	Emergency River Access		Secondary Road
	Airboat Fueling Site		Tertiary Road
	Fire Origin		Unimproved Road
	Spike Camp		Trans-Alaska Pipeline
	Helibase		Structures
	Staging Area		Native Allotments
	Water Source		Military Observation Point
	Repeater		Military Assets of Concern
	Drop Point		Misc. Structures
	Helipoint		Military Reference Point
	Lookout		Stuart Creek 2 Fire
	Aerial Hazard		Historical Fire
	RAWS Weather Stn		

Aircraft 3 IR Flight (7/24/13 @ 1215 hrs)

	Hot Spot
	Scattered Heat
	Intense Heat

Note: No Intense Heat was detected by Aircraft 3 IR flight.

U.S. Air Force

- Elison Air Force Base
- Chena River Research Site
- Yukon Training Area
- Impact Area - Stay on Roads
- Restricted Area
- DET 460
- Husky Drop Zone
- Tanana Flats

U.S. Army Fort Wainwright

- OP LANTIRN
- OP Shack
- FARRP
- Firebird Staging

