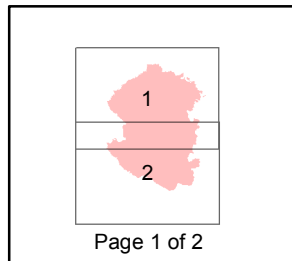
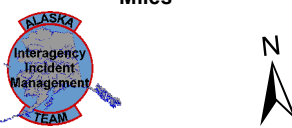
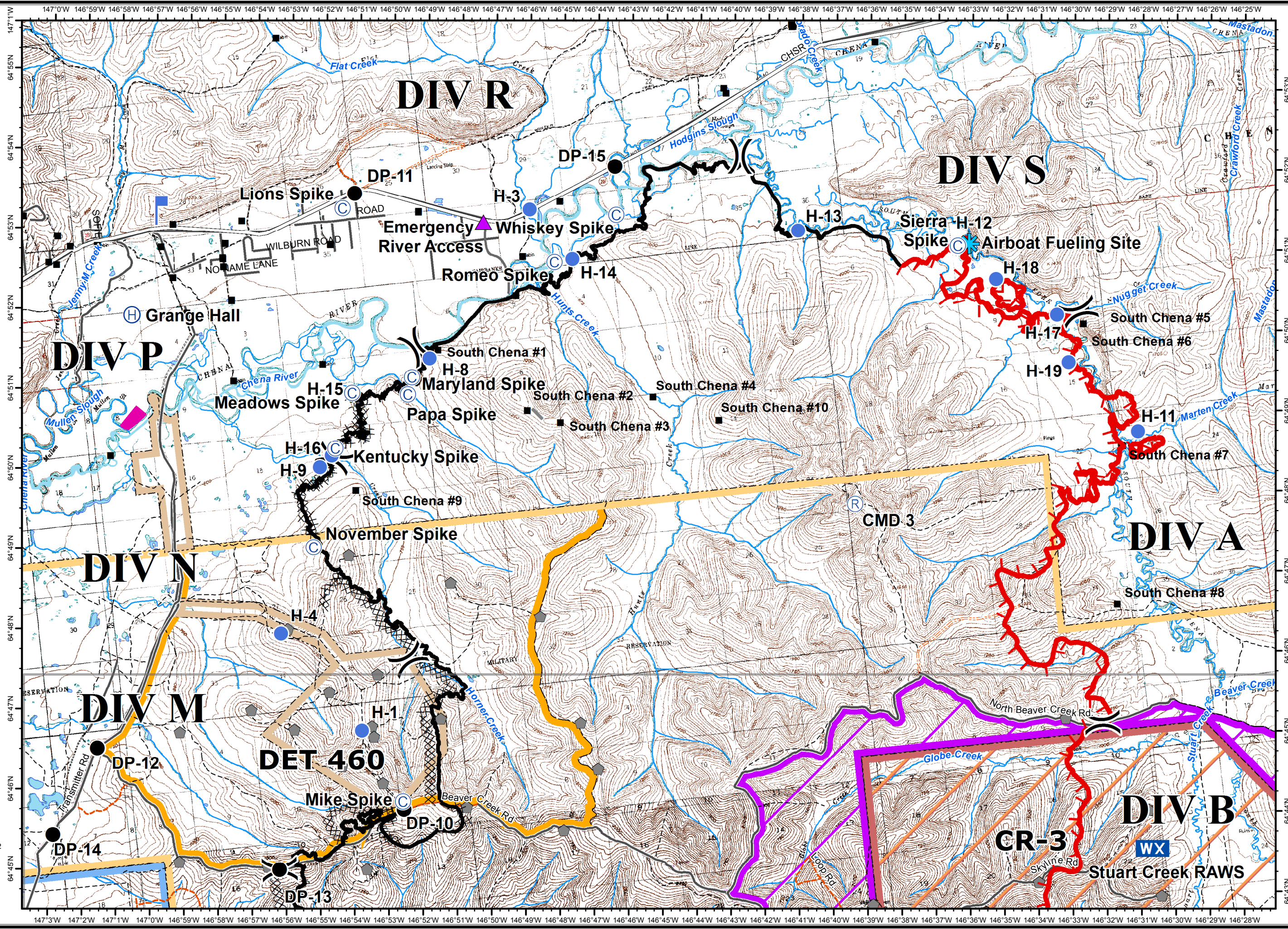


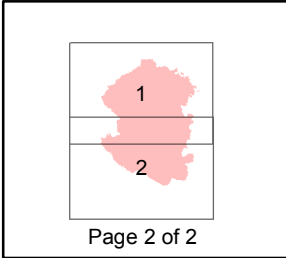
**Stuart Creek 2**  
**AK-MID-000280**  
**IAP Map**  
**NAD 1983**  
**07/24/2013**  
**Day Shift**  
**Approx: 85,475 ac**  
**Perimeter as of: 07/16/13**  
**0800hrs**



- ( ) Division
- ▲ Emergency River Access
- ✪ Airboat Fueling Site
- ⚡ Aerial Hazard
- Ⓡ Repeater
- Ⓢ Camp
- Drop Point
- ⊗ Fire Origin
- Ⓜ Helibase
- Ⓢ Helispot
- 🔍 Lookout
- WX Mobile Weather Unit
- Ⓢ Staging Area
- Ⓢ Water Source
- 🔴 Uncontrolled Fire Edge
- XXXX Completed Dozer Line
- Completed Line
- H - Hand Line
- ▣ Miscellaneous Structures
- ▣ Known Sites
- ▲ Military Obsv Point
- 🏠 Native Allotments
- U.S. Air Force**
- ✈ Eielson Air Force Base
- 🏠 Chena River Research Site
- U.S. Army Fort Wainwright**
- 🏠 Yukon Training Area
- 🏠 Impact Area - Stay on Roads
- 🏠 Restricted Area
- 🏠 DET 460
- 🏠 Husky Drop Zone



**Stuart Creek 2**  
**AK-MID-000280**  
**IAP Map**  
**NAD 1983**  
**07/24/2013**  
**Day Shift**  
**Approx: 85,475 ac**  
**Perimeter as of: 07/16/13**  
**0800hrs**



- ( ) Division
- ▲ Emergency River Access
- ✪ Airboat Fueling Site
- ✧ Aerial Hazard
- Ⓡ Repeater
- Ⓢ Camp
- Drop Point
- ⊗ Fire Origin
- Ⓜ Helibase
- Helispot
- Ⓛ Lookout
- WX Mobile Weather Unit
- Ⓢ Staging Area
- Ⓜ Water Source
- Uncontrolled Fire Edge
- XXXX Completed Dozer Line
- Completed Line
- H - Hand Line
- Miscellaneous Structures
- Known Sites
- ▲ Military Obsv Point
- ✦ Native Allotments
- U.S. Air Force**
- Eielson Air Force Base
- Chena River Research Site
- U.S. Army Fort Wainwright**
- Yukon Training Area
- Impact Area - Stay on Roads
- Restricted Area
- DET 460
- Husky Drop Zone

