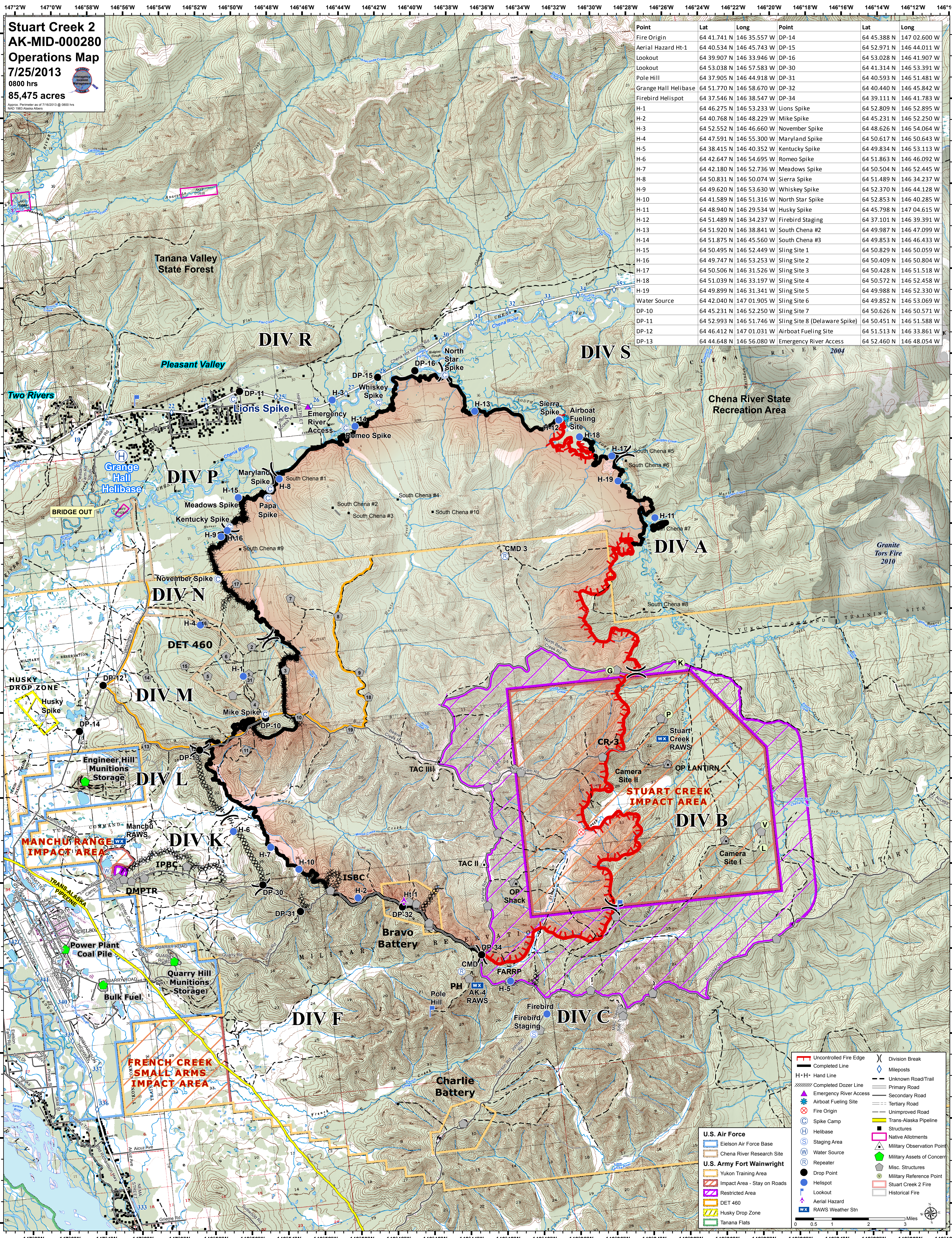


**Stuart Creek 2**  
**AK-MID-000280**  
**Operations Map**  
**7/25/2013**  
**0800 hrs**  
**85,475 acres**

Point	Lat	Long	Point	Lat	Long
Fire Origin	64 41.741 N	146 35.557 W	DP-14	64 45.388 N	147 02.600 W
Aerial Hazard Ht-1	64 40.534 N	146 45.743 W	DP-15	64 52.971 N	146 44.011 W
Lookout	64 39.907 N	146 33.946 W	DP-16	64 53.028 N	146 41.907 W
Lookout	64 53.038 N	146 57.583 W	DP-30	64 41.314 N	146 53.391 W
Pole Hill	64 37.905 N	146 44.918 W	DP-31	64 40.593 N	146 51.481 W
Grange Hall Helibase	64 51.770 N	146 58.670 W	DP-32	64 40.440 N	146 45.842 W
Firebird Helispot	64 37.546 N	146 38.547 W	DP-34	64 39.111 N	146 41.783 W
H-1	64 46.275 N	146 53.233 W	Lions Spike	64 52.809 N	146 52.895 W
H-2	64 40.768 N	146 48.229 W	Mike Spike	64 45.231 N	146 52.250 W
H-3	64 52.552 N	146 46.660 W	November Spike	64 48.626 N	146 54.064 W
H-4	64 47.591 N	146 55.300 W	Maryland Spike	64 50.617 N	146 50.643 W
H-5	64 38.415 N	146 40.352 W	Kentucky Spike	64 49.834 N	146 53.113 W
H-6	64 42.647 N	146 54.695 W	Romeo Spike	64 51.863 N	146 46.092 W
H-7	64 42.180 N	146 52.736 W	Meadows Spike	64 50.504 N	146 52.445 W
H-8	64 50.831 N	146 50.074 W	Sierra Spike	64 51.489 N	146 34.237 W
H-9	64 49.620 N	146 53.630 W	Whiskey Spike	64 52.370 N	146 44.128 W
H-10	64 41.589 N	146 51.316 W	North Star Spike	64 39.111 N	146 40.285 W
H-11	64 48.940 N	146 29.534 W	Husky Spike	64 45.798 N	147 04.615 W
H-12	64 51.489 N	146 34.237 W	Firebird Staging	64 37.101 N	146 39.391 W
H-13	64 51.920 N	146 38.841 W	South Chena #2	64 49.987 N	146 47.099 W
H-14	64 51.875 N	146 45.560 W	South Chena #3	64 49.853 N	146 46.433 W
H-15	64 50.495 N	146 52.449 W	Sling Site 1	64 50.829 N	146 50.059 W
H-16	64 49.747 N	146 53.253 W	Sling Site 2	64 50.409 N	146 50.804 W
H-17	64 50.506 N	146 31.526 W	Sling Site 3	64 50.428 N	146 51.518 W
H-18	64 51.039 N	146 33.197 W	Sling Site 4	64 50.572 N	146 52.458 W
H-19	64 49.899 N	146 31.341 W	Sling Site 5	64 49.988 N	146 52.330 W
Water Source	64 42.040 N	147 01.905 W	Sling Site 6	64 49.852 N	146 53.069 W
DP-10	64 45.231 N	146 52.250 W	Sling Site 7	64 50.626 N	146 50.571 W
DP-11	64 52.993 N	146 51.746 W	Sling Site 8 (Delaware Spike)	64 50.451 N	146 51.588 W
DP-12	64 46.412 N	147 01.031 W	Airboat Fueling Site	64 51.513 N	146 33.861 W
DP-13	64 44.648 N	146 56.080 W	Emergency River Access	64 52.460 N	146 48.054 W



**U.S. Air Force**

- Eielson Air Force Base
- Chena River Research Site

**U.S. Army Fort Wainwright**

- Yukon Training Area
- Impact Area - Stay on Roads
- Restricted Area
- DET 460
- Husky Drop Zone
- Tanana Flats

**Legend:**

- Uncontrolled Fire Edge
- Completed Line
- Hand Line
- Completed Dozer Line
- Emergency River Access
- Airboat Fueling Site
- Fire Origin
- Spike Camp
- Helibase
- Staging Area
- Water Source
- Repeater
- Drop Point
- Helispot
- Lookout
- Aerial Hazard
- RAWs Weather Stn
- Division Break
- Mileposts
- Unknown Road/Trail
- Primary Road
- Secondary Road
- Tertiary Road
- Unimproved Road
- Trans-Alaska Pipeline
- Structures
- Native Allotments
- Military Observation Point
- Military Assets of Concern
- Misc. Structures
- Military Reference Point
- Stuart Creek 2 Fire
- Historical Fire

Scale: 0 0.5 1 2 3 Miles