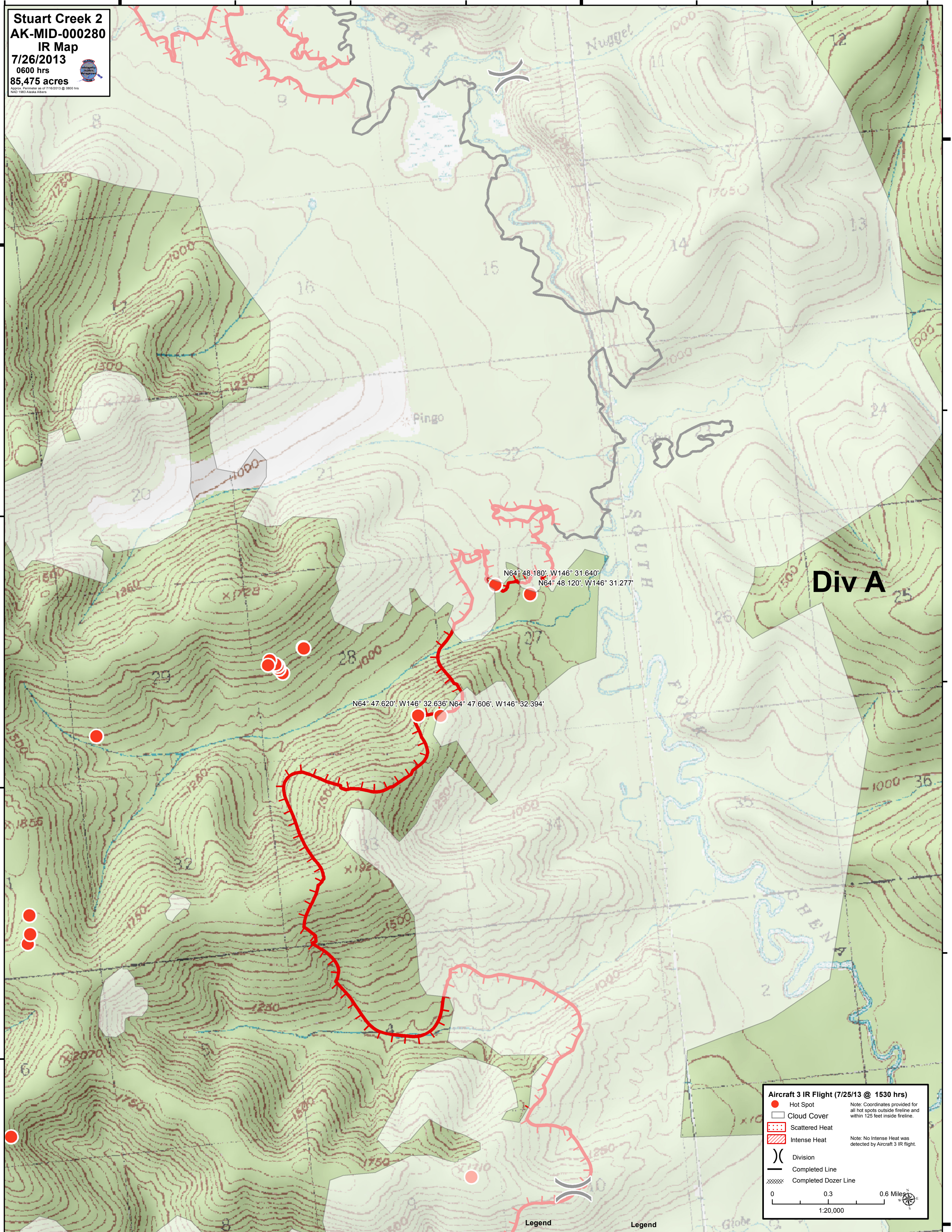


Stuart Creek 2
AK-MID-000280
IR Map
7/26/2013
0600 hrs
85,475 acres

64°50'N

64°50'N



Aircraft 3 IR Flight (7/25/13 @ 1530 hrs)

- Hot Spot Note: Coordinates provided for all hot spots outside fireline and within 125 feet inside fireline.
- ☐ Cloud Cover
- ⋯ Scattered Heat
- ▨ Intense Heat Note: No Intense Heat was detected by Aircraft 3 IR flight.
-) Division
- Completed Line
- ⊗ Completed Dozer Line

0 0.3 0.6 Miles
 1:20,000

64°45'N