

Stuart Creek 2
 AK-MID-000280
 IR Map
 7/26/2013
 0600 hrs
 85,475 acres

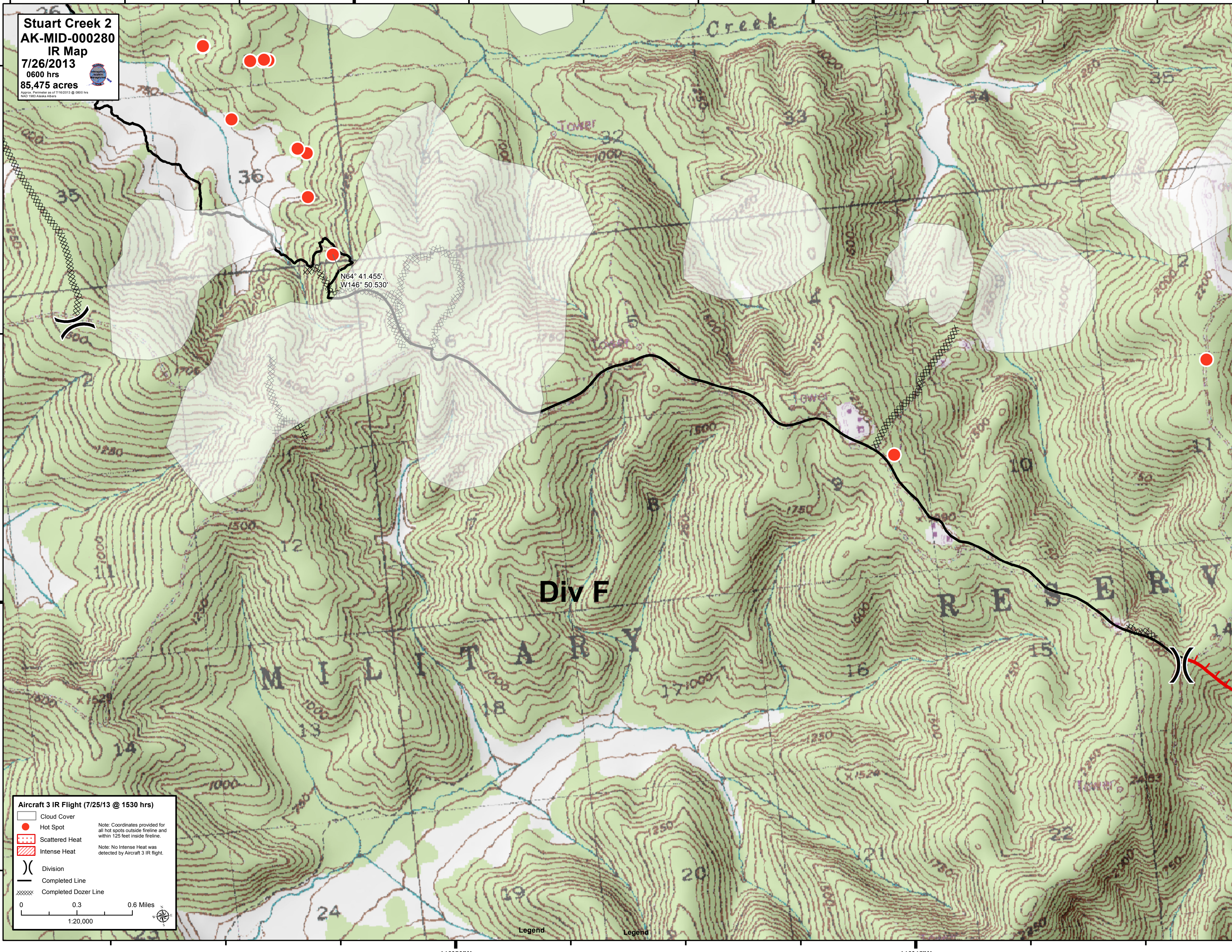
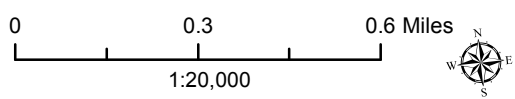


N64° 41.455'
 W146° 50.530'

Aircraft 3 IR Flight (7/25/13 @ 1530 hrs)

- Cloud Cover
- Hot Spot
- Scattered Heat
- Intense Heat
- Division
- Completed Line
- Completed Dozer Line

Note: Coordinates provided for all hot spots outside fireline and within 125 feet inside fireline.
 Note: No Intense Heat was detected by Aircraft 3 IR flight.



Legend Legend

146°50'W

146°45'W

64°40'N

64°40'N