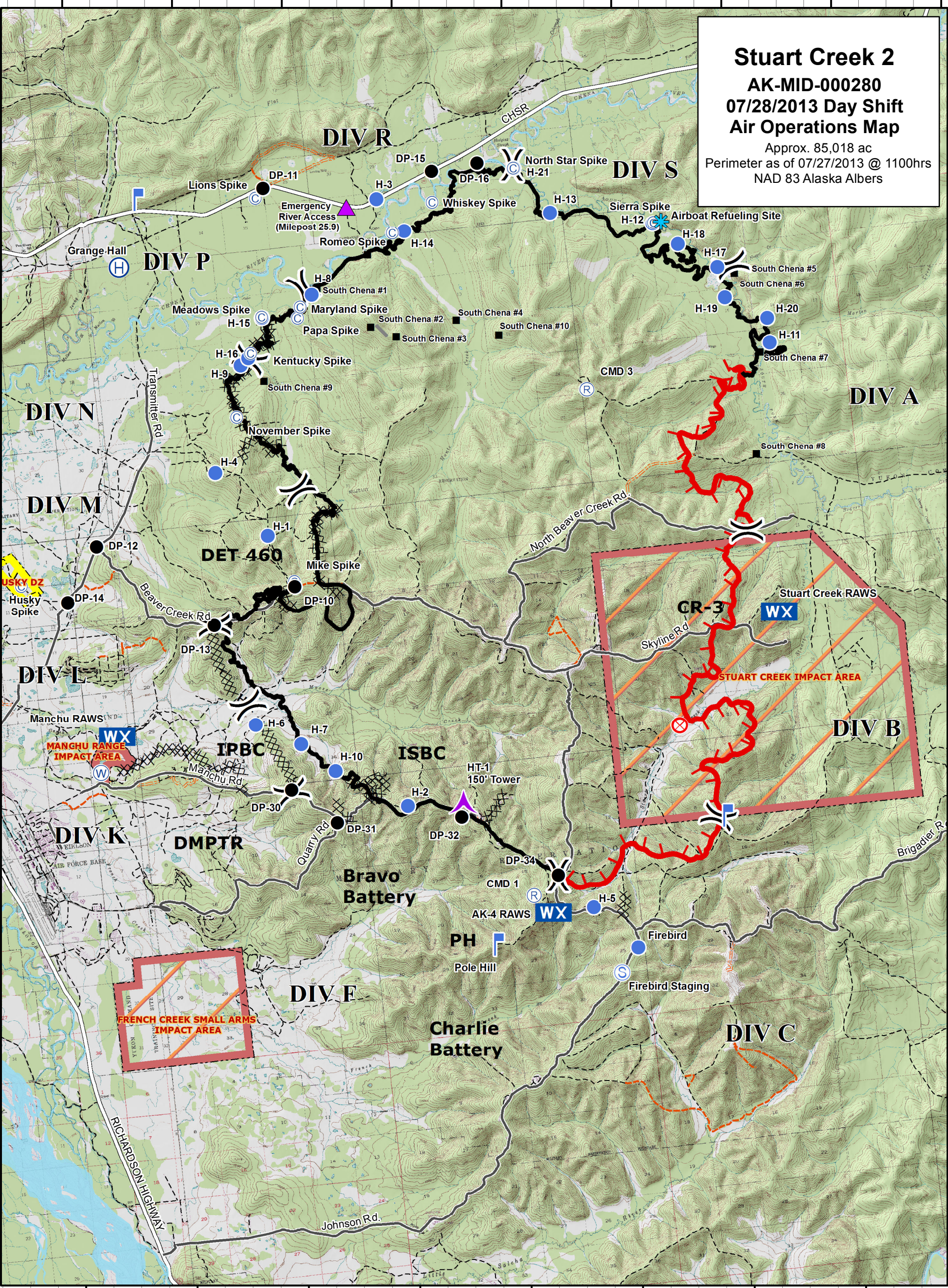


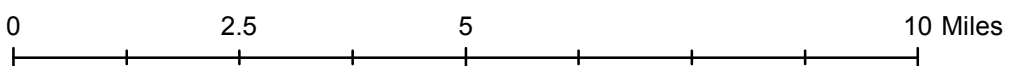
147°0'0"W 146°55'0"W 146°50'0"W 146°45'0"W 146°40'0"W 146°35'0"W 146°30'0"W 146°25'0"W 146°20'0"W

64°55'0"N  
64°50'0"N  
64°45'0"N  
64°40'0"N  
64°35'0"N

**Stuart Creek 2**  
**AK-MID-000280**  
**07/28/2013 Day Shift**  
**Air Operations Map**  
 Approx. 85,018 ac  
 Perimeter as of 07/27/2013 @ 1100hrs  
 NAD 83 Alaska Albers



- |                          |               |                        |                               |
|--------------------------|---------------|------------------------|-------------------------------|
| ( ) Division             | ● Drop Point  | WX Mobile Weather Unit | — Uncontrolled Fire Edge      |
| ▲ Emergency River Access | ⊗ Fire Origin | Ⓡ Repeater             | XXXXXX Completed Dozer Line   |
| ✪ Airboat Fueling Site   | Ⓜ Helibase    | Ⓢ Staging Area         | — Completed Line              |
| ▲ Aerial Hazard          | ● Helispot    | Ⓦ Water Source         | H - H - Hand Line             |
| Ⓢ Camp                   | Ⓛ Lookout     |                        | ■ Impact Area - Stay on Roads |
|                          |               |                        | ■ Husky Drop Zone             |



147°5'0"W 147°0'0"W 146°55'0"W 146°50'0"W 146°45'0"W 146°40'0"W 146°35'0"W 146°30'0"W



## Frequently Used Coordinates

Point	Latitude	Longitude	Notes
Fire Origin	64 41.741 N	146 35.557 W	
Aerial Hazard Ht-1	64 40.534 N	146 45.743 W	AERIAL HAZARD 150 ft tower Ht-1
Lookout	64 39.907 N	146 33.946 W	
Lookout	64 53.038 N	146 57.583 W	
Pole Hill	64 37.905 N	146 44.918 W	
Grange Hall Helibase	64 51.770 N	146 58.670 W	
Firebird Helispot	64 37.546 N	146 38.547 W	
H-1	64 46.275 N	146 53.233 W	Good for type 2 & 3 helicopters
H-2	64 40.768 N	146 48.229 W	Good for Type 1, 2, and 3 helicopters
H-3	64 52.552 N	146 46.660 W	Good for medivac & troops. Type 1, 2, & 3 helicopters
H-4	64 47.591 N	146 55.300 W	Good for medivac & troops. Type 2, & 3 helicopters
H-5	64 38.415 N	146 40.352 W	
H-6	64 42.647 N	146 54.695 W	
H-7	64 42.180 N	146 52.736 W	
H-8	64 50.831 N	146 50.074 W	
H-9	64 49.620 N	146 53.630 W	
H-10	64 41.589 N	146 51.316 W	Log Deck; good for Type 2 & 3 helicopters
H-11	64 48.940' N	146 29.534' W	Log Deck; good for Type 2 & 3 helicopters
H-12	64 51.489 N	146 34.237 W	
H-13	64 51.920 N	146 38.841 W	
H-14	64 51.875 N	146 45.560 W	
H-15	64 50.495 N	146 52.449 W	
H-16	64 49.747 N	146 53.253 W	
H-17	64 50.506 N	146 31.526 W	
H-18	64 51.039 N	146 33.197 W	
H-19	64 49.899 N	146 31.341 W	
H-20	64 49.411 N	146 29.531 W	
H-21	64 52.853 N	146 40.285 W	
Water Source	64 42.040 N	147 01.905 W	
DP-10	64 45.231 N	146 52.250 W	
DP-11	64 52.993 N	146 51.746 W	
DP-12	64 46.412 N	147 01.031 W	
DP-13	64 44.648 N	146 56.080 W	
DP-14	64 45.388 N	147 02.600 W	
DP-15	64 52.971 N	146 44.011 W	
DP-16	64 53.028 N	146 41.907 W	
DP-30	64 41.314 N	146 53.391 W	
DP-31	64 40.593 N	146 51.481 W	
DP-32	64 40.440 N	146 45.842 W	
DP-34	64 39.111 N	146 41.783 W	
Lions Spike	64 52.809 N	146 52.895 W	
Mike Spike	64 45.231 N	146 52.250 W	
November Spike	64 48.626 N	146 54.064 W	
Maryland Spike	64 50.617 N	146 50.643 W	
Kentucky Spike	64 49.834 N	146 53.113 W	
Romeo Spike	64 51.863 N	146 46.092 W	
Meadows Spike	64 50.504 N	146 52.445 W	
Sierra Spike	64 51.489 N	146 34.237 W	
Whiskey Spike	64 52.370 N	146 44.128 W	
North Star Spike	64 52.853 N	146 40.285 W	
Husky Spike	64 45.798 N	147 04.615 W	
Firebird Staging	64 37.101 N	146 39.391 W	
South Chena #2	64 49.987 N	146 47.099 W	Helitack must protect
South Chena #3	64 49.853 N	146 46.433 W	Helitack must protect
Sling Site 1	64 50.829 N	146 50.059 W	
Sling Site 2	64 50.409 N	146 50.804 W	
Sling Site 3	64 50.428 N	146 51.518 W	
Sling Site 4	64 50.572 N	146 52.458 W	
Sling Site 5	64 49.988 N	146 52.330 W	
Sling Site 6	64 49.852 N	146 53.069 W	
Sling Site 7	64 50.626 N	146 50.571 W	
Sling Site 8 (Delaware Spike)	64 50.451 N	146 51.588 W	
Airboat Fueling Site	64 51.513 N	146 33.861 W	
Emergency River Access	64 52.460 N	146 48.054 W	