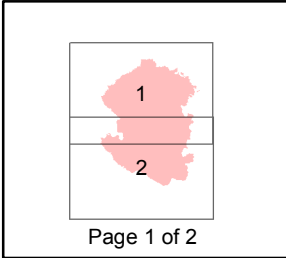
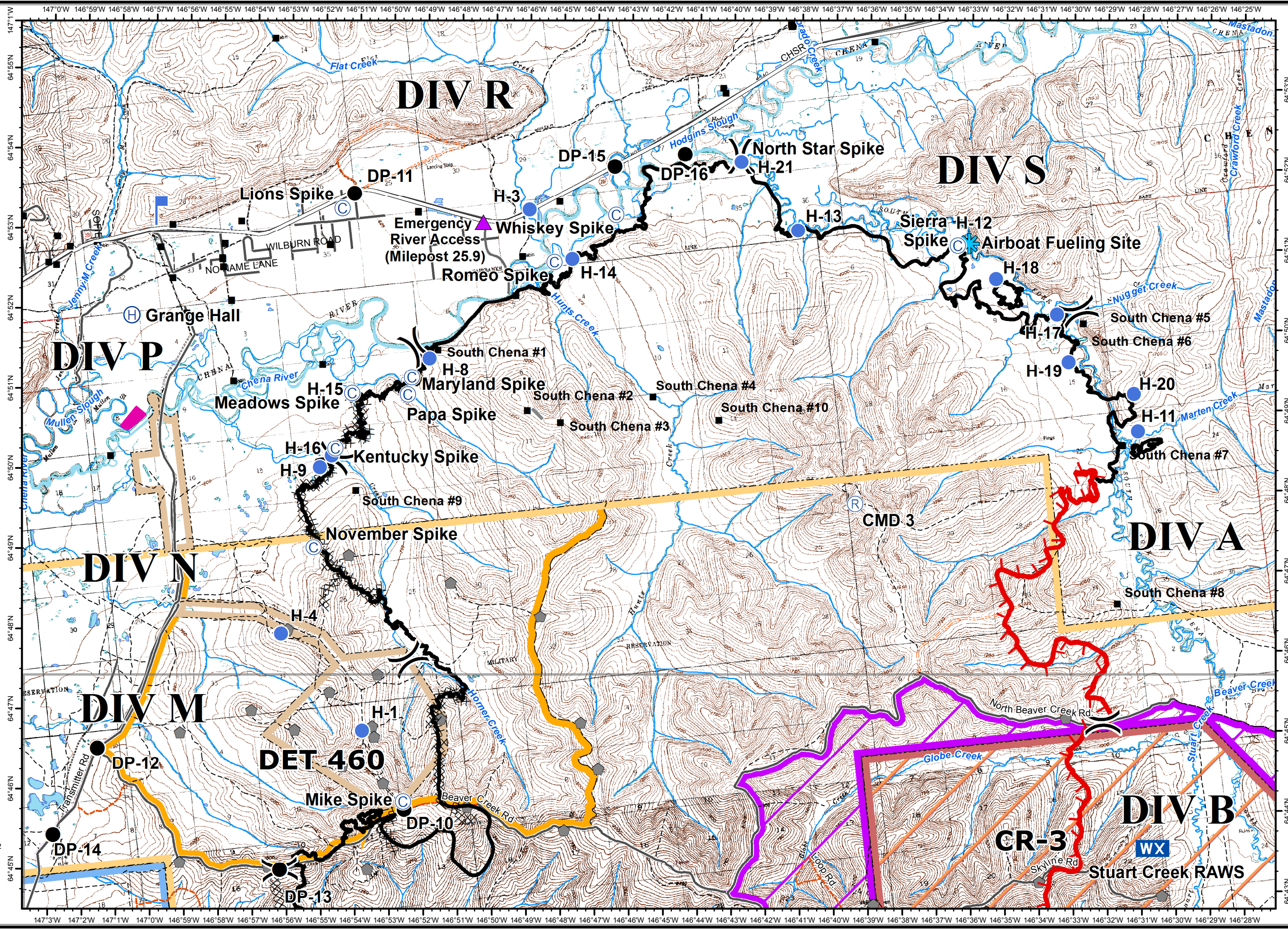
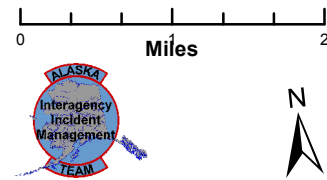


**Stuart Creek 2**  
**AK-MID-000280**  
**IAP Map**  
**NAD 1983**  
**07/28/2013**  
**Day Shift**  
**Approx: 85,018 ac**  
**Perimeter as of: 07/27/13**  
**1100hrs**



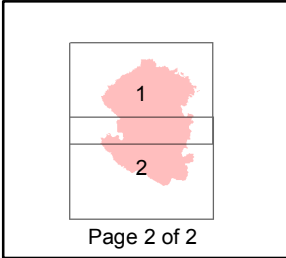
- ( ) Division
- ▲ Emergency River Access
- ✪ Airboat Fueling Site
- ⚡ Aerial Hazard
- Ⓡ Repeater
- Ⓢ Camp
- Drop Point
- ⊗ Fire Origin
- Ⓜ Helibase
- Ⓢ Helispot
- 🔍 Lookout
- WX Mobile Weather Unit
- Ⓢ Staging Area
- Ⓢ Water Source
- 🔴 Uncontrolled Fire Edge
- XXXX Completed Dozer Line
- Completed Line
- H - Hand Line
- ▣ Miscellaneous Structures
- ▣ Known Sites
- ▲ Military Obsv Point
- ⬜ Native Allotments
- U.S. Air Force**
- ▣ Eielson Air Force Base
- ▣ Chena River Research Site
- U.S. Army Fort Wainwright**
- ▣ Yukon Training Area
- ▣ Impact Area - Stay on Roads
- ▣ Restricted Area
- ▣ DET 460
- ▣ Husky Drop Zone



147°0'W 146°59'W 146°58'W 146°57'W 146°56'W 146°55'W 146°54'W 146°53'W 146°52'W 146°51'W 146°50'W 146°49'W 146°48'W 146°47'W 146°46'W 146°45'W 146°44'W 146°43'W 146°42'W 146°41'W 146°40'W 146°39'W 146°38'W 146°37'W 146°36'W 146°35'W 146°34'W 146°33'W 146°32'W 146°31'W 146°30'W 146°29'W 146°28'W 146°27'W 146°26'W 146°25'W



**Stuart Creek 2**  
**AK-MID-000280**  
**IAP Map**  
**NAD 1983**  
**07/28/2013**  
**Day Shift**  
**Approx: 85,018 ac**  
**Perimeter as of: 07/27/13**  
**1100hrs**



- ( ) Division
- ▲ Emergency River Access
- ✪ Airboat Fueling Site
- ✧ Aerial Hazard
- Ⓡ Repeater
- Ⓢ Camp
- Drop Point
- ⊗ Fire Origin
- Ⓜ Helibase
- Helispot
- Ⓛ Lookout
- WX Mobile Weather Unit
- Ⓢ Staging Area
- Ⓜ Water Source
- Uncontrolled Fire Edge
- XXXX Completed Dozer Line
- Completed Line
- H - Hand Line
- Miscellaneous Structures
- Known Sites
- ▲ Military Obsv Point
- ✦ Native Allotments
- U.S. Air Force**
- Eielson Air Force Base
- Chena River Research Site
- U.S. Army Fort Wainwright**
- Yukon Training Area
- Impact Area - Stay on Roads
- Restricted Area
- DET 460
- Husky Drop Zone

