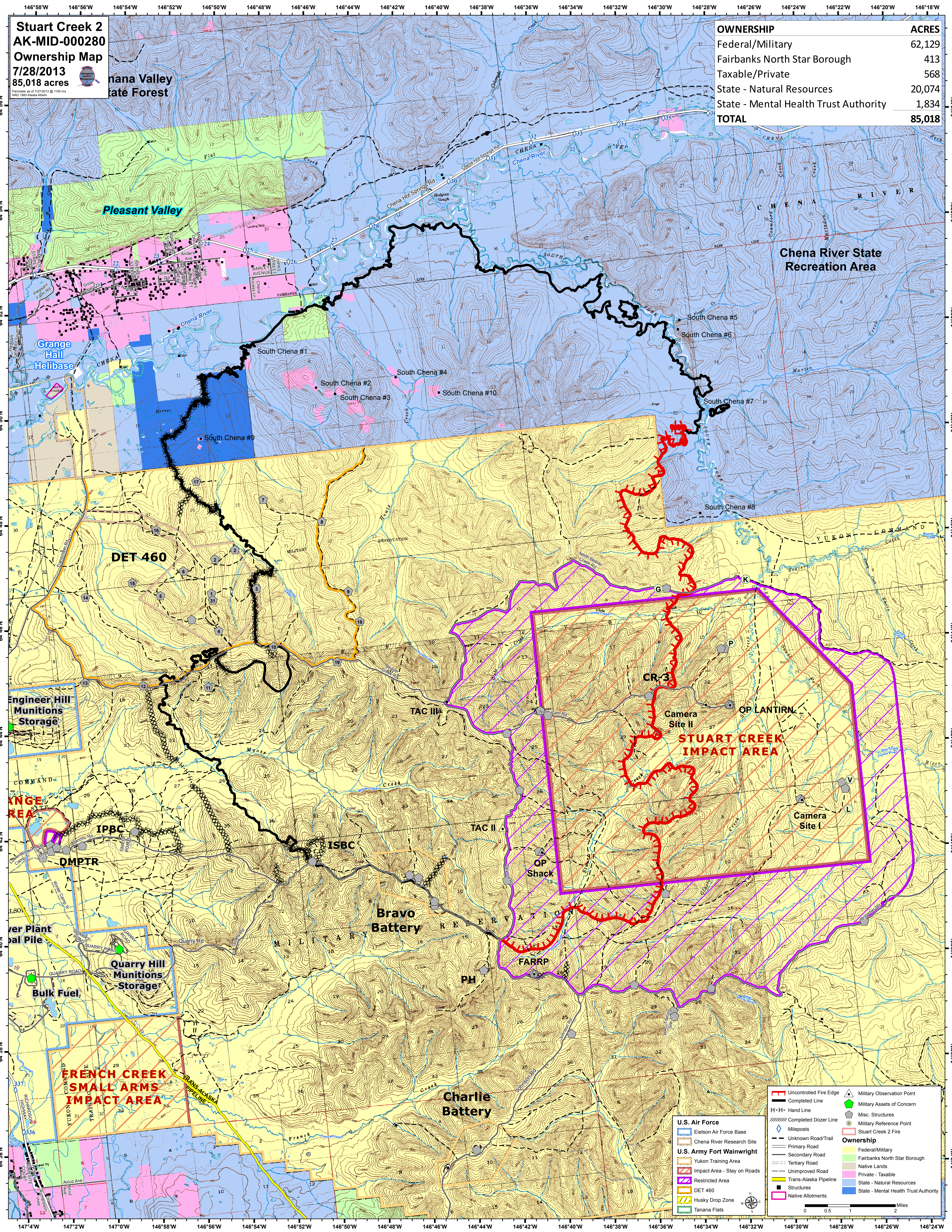


146°58'W 146°56'W 146°54'W 146°52'W 146°50'W 146°48'W 146°46'W 146°44'W 146°42'W 146°40'W 146°38'W 146°36'W 146°34'W 146°32'W 146°30'W 146°28'W 146°26'W 146°24'W 146°22'W 146°20'W 146°18'W

Stuart Creek 2
AK-MID-000280
Ownership Map
7/28/2013
85,018 acres

Tanana Valley State Forest

OWNERSHIP	ACRES
Federal/Military	62,129
Fairbanks North Star Borough	413
Taxable/Private	568
State - Natural Resources	20,074
State - Mental Health Trust Authority	1,834
TOTAL	85,018



147°4'W 147°2'W 147°0'W 146°58'W 146°56'W 146°54'W 146°52'W 146°50'W 146°48'W 146°46'W 146°44'W 146°42'W 146°40'W 146°38'W 146°36'W 146°34'W 146°32'W 146°30'W 146°28'W 146°26'W 146°24'W

Symbol	Description
[Red dashed line]	Uncontrolled Fire Edge
[Black solid line]	Completed Line
[Dashed line]	Hand Line
[Dotted line]	Completed Dozer Line
[Blue diamond]	Mileposts
[Black dashed line]	Unknown Road/Trail
[Grey solid line]	Primary Road
[Grey dashed line]	Secondary Road
[Grey dotted line]	Tertiary Road
[Grey dash-dot line]	Unimproved Road
[Yellow line]	Trans-Alaska Pipeline
[Black square]	Husky Drop Zone
[Green square]	Tanana Flats
[Blue triangle]	Military Observation Point
[Green triangle]	Military Assets of Concern
[Grey circle]	Misc. Structures
[Green circle]	Military Reference Point
[Red square]	Stuart Creek 2 Fire
[Light blue]	Federal/Military
[Light green]	Fairbanks North Star Borough
[Pink]	Native Lands
[Light purple]	Private - Taxable
[Light blue]	State - Natural Resources
[Light blue]	State - Mental Health Trust Authority

U.S. Air Force
 Eielson Air Force Base
 Chena River Research Site

U.S. Army Fort Wainwright
 Yukon Training Area
 Impact Area - Stay on Roads
 Restricted Area
 DET 460
 Husky Drop Zone
 Tanana Flats

Ownership

Scale: 0 0.5 1 2 Miles