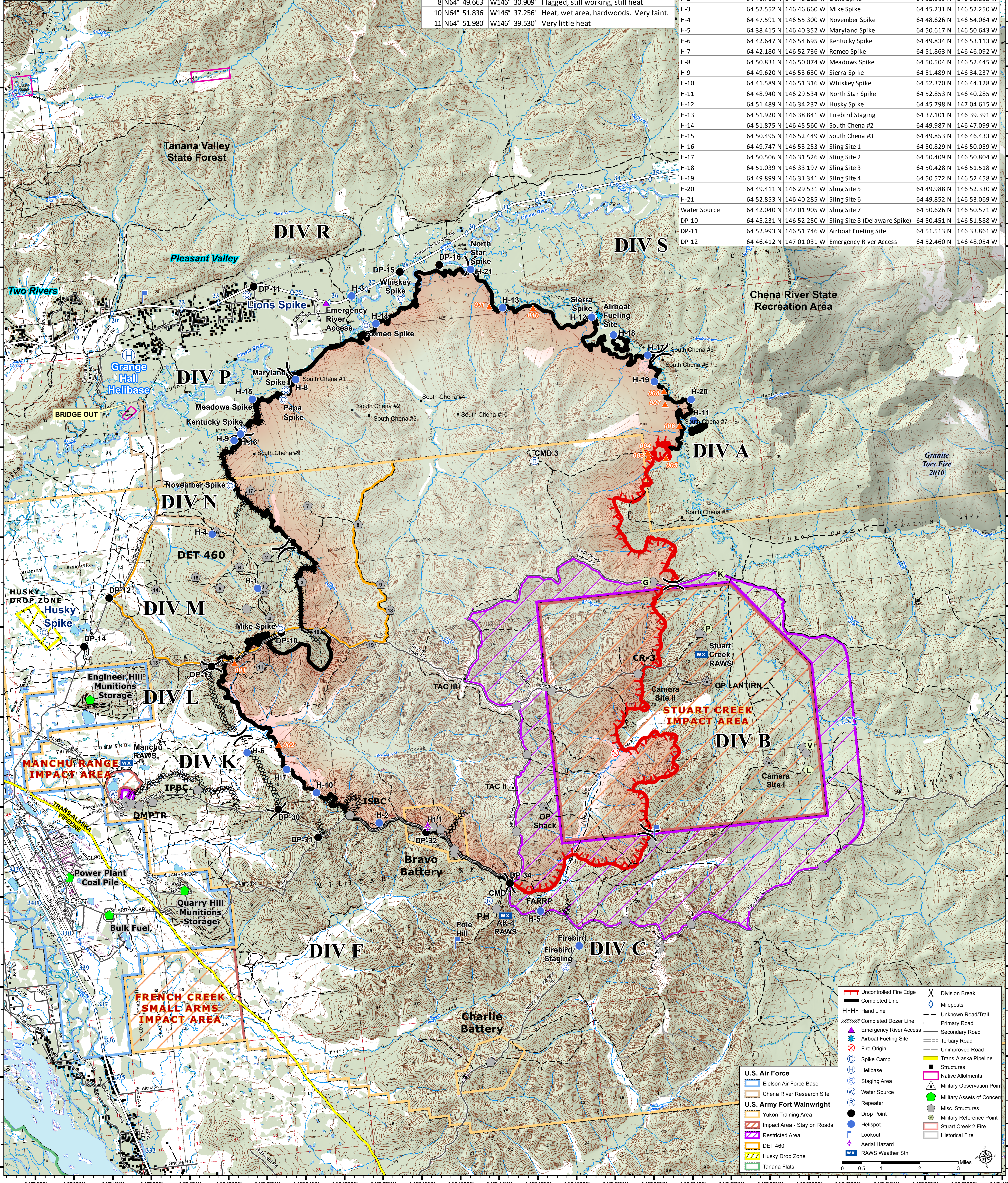


**Stuart Creek 2**  
**AK-MID-000280**  
**Operations Map**  
**Palm IR**  
**7/28/2013**  
**0800 hrs**  
**85,018 acres**

PALM IR - HOT SPOTS			
Ident	Lat	Long	Notes
1	N64° 44.670'	W146° 54.856'	Smoke, Div L/M
2	N64° 42.750'	W146° 53.023'	No exact hot spot
3	N64° 48.238'	W146° 32.102'	Edge of hardwoods
4	N64° 48.338'	W146° 32.101'	
5	N64° 48.169'	W146° 31.186'	Edge
6	N64° 48.857'	W146° 30.293'	Spot - Heat 15 feet from river
7	N64° 49.367'	W146° 30.921'	Working it, still heat, in spruce
8	N64° 49.663'	W146° 30.909'	Flagged, still working, still heat
10	N64° 51.836'	W146° 37.256'	Heat, wet area, hardwoods. Very faint.
11	N64° 51.980'	W146° 39.530'	Very little heat

Point	Lat	Long	Point	Lat	Long
Fire Origin	64 41.741 N	146 35.557 W	DP-13	64 44.648 N	146 56.080 W
Aerial Hazard Ht-1	64 40.534 N	146 45.743 W	DP-14	64 45.388 N	147 02.600 W
Lookout	64 39.907 N	146 33.946 W	DP-15	64 52.971 N	146 44.011 W
Lookout	64 53.038 N	146 57.583 W	DP-16	64 53.028 N	146 41.907 W
Pole Hill	64 37.905 N	146 44.918 W	DP-30	64 41.314 N	146 53.391 W
Grange Hall Helibase	64 51.770 N	146 58.670 W	DP-31	64 40.593 N	146 51.481 W
Firebird Helispot	64 37.546 N	146 38.547 W	DP-32	64 40.440 N	146 45.842 W
H-1	64 46.275 N	146 53.233 W	DP-34	64 39.111 N	146 41.783 W
H-2	64 40.768 N	146 48.229 W	DP-35	64 52.809 N	146 52.895 W
H-3	64 52.552 N	146 46.660 W	DP-36	64 45.231 N	146 52.250 W
H-4	64 47.591 N	146 55.300 W	DP-37	64 48.626 N	146 54.064 W
H-5	64 38.415 N	146 40.352 W	DP-38	64 50.617 N	146 50.643 W
H-6	64 42.647 N	146 54.695 W	DP-39	64 49.834 N	146 53.113 W
H-7	64 42.180 N	146 52.736 W	DP-40	64 51.863 N	146 46.092 W
H-8	64 50.831 N	146 50.074 W	DP-41	64 50.504 N	146 52.445 W
H-9	64 49.620 N	146 53.630 W	DP-42	64 51.489 N	146 34.237 W
H-10	64 41.589 N	146 51.316 W	DP-43	64 52.370 N	146 44.128 W
H-11	64 48.940 N	146 29.534 W	DP-44	64 52.853 N	146 40.285 W
H-12	64 51.489 N	146 34.237 W	DP-45	64 45.798 N	147 04.615 W
H-13	64 51.920 N	146 38.841 W	DP-46	64 37.101 N	146 39.391 W
H-14	64 51.875 N	146 45.560 W	DP-47	64 49.987 N	146 47.099 W
H-15	64 50.495 N	146 52.449 W	DP-48	64 49.853 N	146 46.433 W
H-16	64 49.747 N	146 53.253 W	DP-49	64 50.829 N	146 50.059 W
H-17	64 50.506 N	146 31.526 W	DP-50	64 50.409 N	146 50.804 W
H-18	64 51.039 N	146 33.197 W	DP-51	64 50.428 N	146 51.518 W
H-19	64 49.899 N	146 31.341 W	DP-52	64 50.572 N	146 52.458 W
H-20	64 49.411 N	146 29.531 W	DP-53	64 49.988 N	146 52.330 W
H-21	64 52.853 N	146 40.285 W	DP-54	64 49.852 N	146 53.069 W
Water Source	64 42.040 N	147 01.905 W	DP-55	64 50.626 N	146 50.571 W
DP-10	64 45.231 N	146 52.250 W	DP-56	64 50.451 N	146 51.588 W
DP-11	64 52.993 N	146 51.746 W	DP-57	64 51.513 N	146 33.861 W
DP-12	64 46.412 N	147 01.031 W	DP-58	64 52.460 N	146 48.054 W



Uncontrolled Fire Edge	Division Break
Completed Line	Mileposts
Hand Line	Unknown Road/Trail
Completed Dozer Line	Primary Road
Emergency River Access	Secondary Road
Airboat Fueling Site	Tertiary Road
Fire Origin	Unimproved Road
Spike Camp	Trans-Alaska Pipeline
Helibase	Structures
Staging Area	Native Allotments
Water Source	Military Observation Point
Repeater	Military Assets of Concern
Drop Point	Misc. Structures
Helispot	Military Reference Point
Lookout	Stuart Creek 2 Fire
Aerial Hazard	Historical Fire
RAWs Weather Stn	

**U.S. Air Force**  
 Elson Air Force Base  
 Chena River Research Site

**U.S. Army Fort Wainwright**  
 Yukon Training Area  
 Impact Area - Stay on Roads  
 Restricted Area  
 DET 460  
 Husky Drop Zone  
 Tanana Flats

0 0.5 1 2 3 Miles