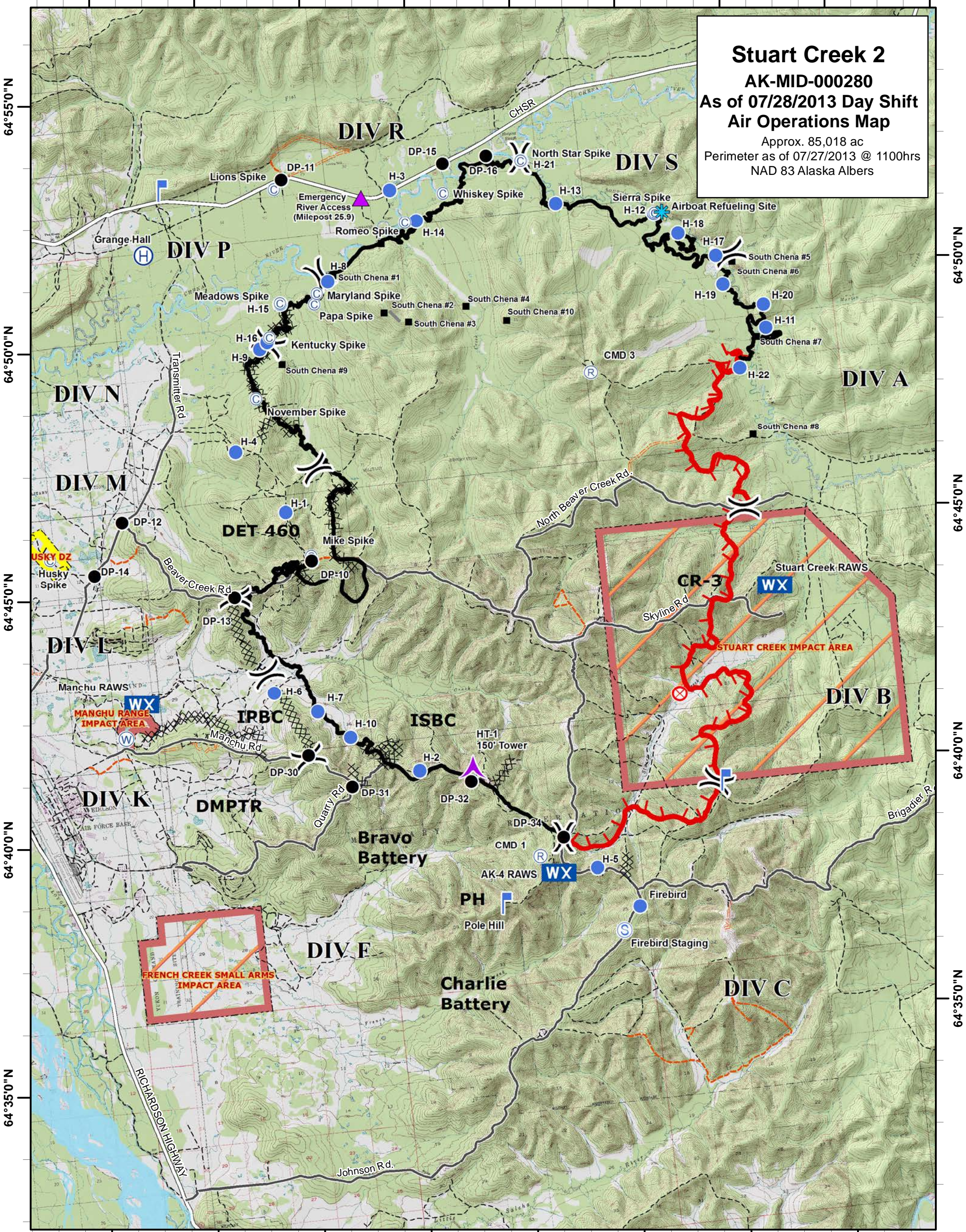


Stuart Creek 2
AK-MID-000280
As of 07/28/2013 Day Shift
Air Operations Map
 Approx. 85,018 ac
 Perimeter as of 07/27/2013 @ 1100hrs
 NAD 83 Alaska Albers



- | | | | |
|--------------------------|---------------|------------------------|-------------------------------|
|) (Division | ● Drop Point | WX Mobile Weather Unit | — Uncontrolled Fire Edge |
| ▲ Emergency River Access | ⊗ Fire Origin | Ⓡ Repeater | XXXXXX Completed Dozer Line |
| ✪ Airboat Fueling Site | Ⓜ Helibase | Ⓢ Staging Area | — Completed Line |
| ▲ Aerial Hazard | ● Helispot | Ⓦ Water Source | H - H Hand Line |
| Ⓢ Camp | Ⓛ Lookout | | ■ Impact Area - Stay on Roads |
| | | | ■ Husky Drop Zone |

