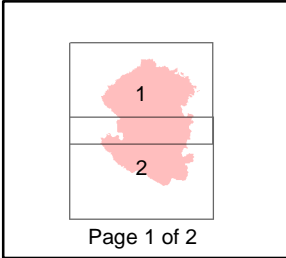
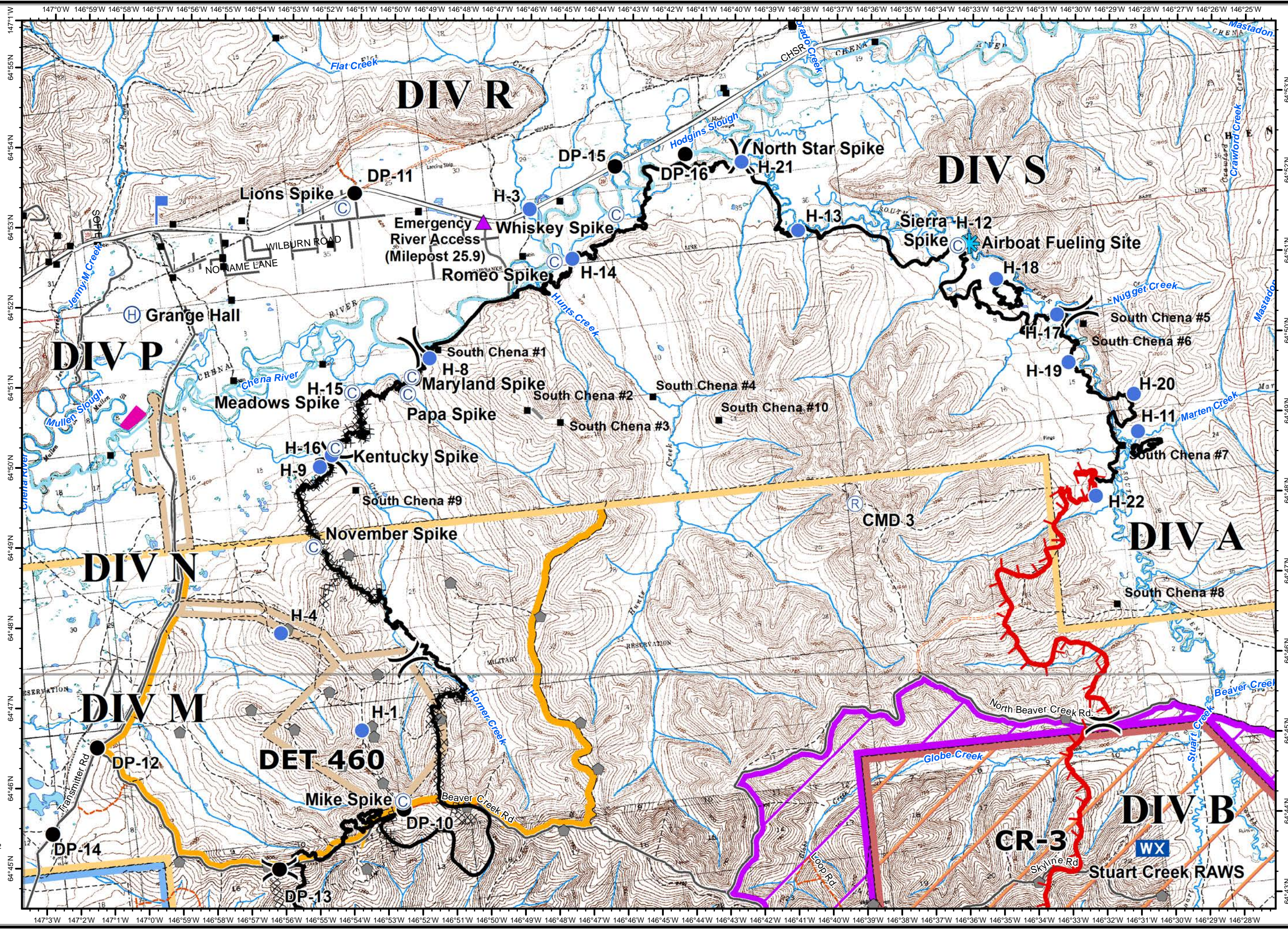
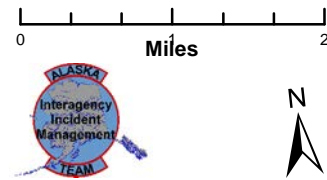


Stuart Creek 2
AK-MID-000280
IAP Map
NAD 1983
As of 07/28/2013
Day Shift
Approx: 85,018 ac
Perimeter as of: 07/27/13
1100hrs



- () Division
- ▲ Emergency River Access
- ✱ Airboat Fueling Site
- ⚡ Aerial Hazard
- Ⓡ Repeater
- Ⓢ Camp
- Drop Point
- ⊗ Fire Origin
- Ⓜ Helibase
- Ⓟ Helispot
- 🔍 Lookout
- WX Mobile Weather Unit
- Ⓢ Staging Area
- Ⓜ Water Source
- 🔴 Uncontrolled Fire Edge
- XXXX Completed Dozer Line
- Completed Line
- H - Hand Line
- ▣ Miscellaneous Structures
- Known Sites
- ▲ Military Obsv Point
- ⬜ Native Allotments
- U.S. Air Force**
- ✈ Eielson Air Force Base
- 🏠 Chena River Research Site
- U.S. Army Fort Wainwright**
- 🏠 Yukon Training Area
- 🏠 Impact Area - Stay on Roads
- 🏠 Restricted Area
- 🏠 DET 460
- 🏠 Husky Drop Zone



147°3'W 147°2'W 147°1'W 147°0'W 146°59'W 146°58'W 146°57'W 146°56'W 146°55'W 146°54'W 146°53'W 146°52'W 146°51'W 146°50'W 146°49'W 146°48'W 146°47'W 146°46'W 146°45'W 146°44'W 146°43'W 146°42'W 146°41'W 146°40'W 146°39'W 146°38'W 146°37'W 146°36'W 146°35'W 146°34'W 146°33'W 146°32'W 146°31'W 146°30'W 146°29'W 146°28'W 146°27'W 146°26'W 146°25'W