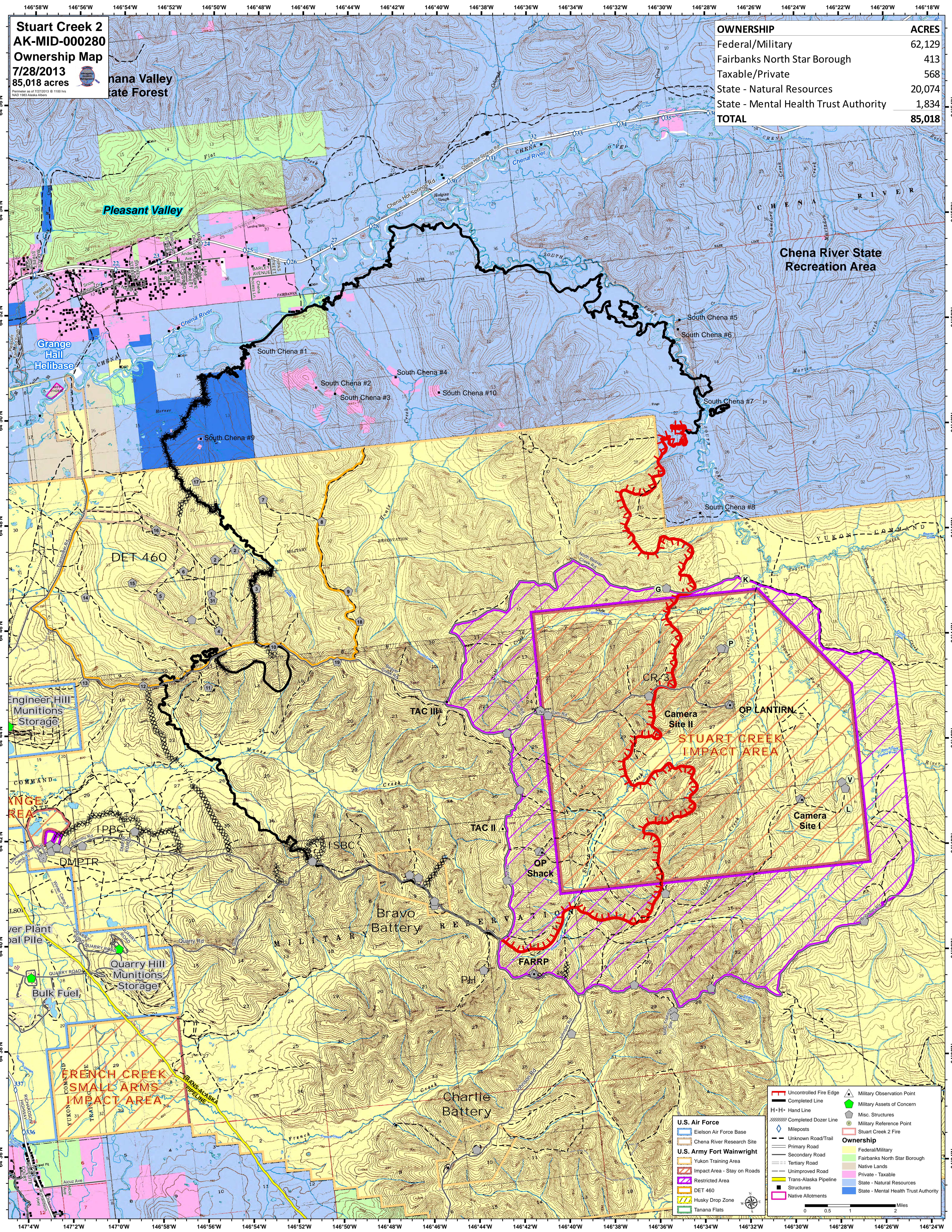


Stuart Creek 2
AK-MID-000280
Ownership Map
7/28/2013
85,018 acres

Tanana Valley State Forest

OWNERSHIP	ACRES
Federal/Military	62,129
Fairbanks North Star Borough	413
Taxable/Private	568
State - Natural Resources	20,074
State - Mental Health Trust Authority	1,834
TOTAL	85,018



Symbol	Description
[Red line]	Uncontrolled Fire Edge
[Black line]	Completed Line
[H-H]	Hand Line
[Dashed line]	Completed Dozer Line
[Blue diamond]	Mileposts
[Dashed line]	Unknown Road/Trail
[Solid line]	Primary Road
[Dashed line]	Secondary Road
[Dotted line]	Tertiary Road
[Dashed line]	Unimproved Road
[Yellow line]	Trans-Alaska Pipeline
[Black square]	Structures
[Pink square]	Native Allotments
[Green triangle]	Military Observation Point
[Green diamond]	Military Assets of Concern
[Grey circle]	Misc. Structures
[Green circle]	Military Reference Point
[Red square]	Stuart Creek 2 Fire

U.S. Air Force

- Eielson Air Force Base
- Chena River Research Site

U.S. Army Fort Wainwright

- Yukon Training Area
- Impact Area - Stay on Roads
- Restricted Area
- DET 460
- Husky Drop Zone
- Tanana Flats

Ownership

- Federal/Military
- Fairbanks North Star Borough
- Native Lands
- Private - Taxable
- State - Natural Resources
- State - Mental Health Trust Authority

Scale: 0 0.5 1 2 Miles