

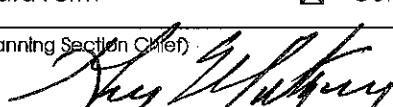
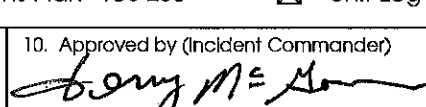
# STUART CREEK 2 FIRE

AK-MID-280  
PDHK8H  
(1502)

July 10<sup>th</sup>, 2013  
Day 0800 - 2200

## Meeting Schedule

0800 Briefing @ Lion and Firebird Spike  
1100 Cooperators Meeting @ North Pole  
1800 Planning Meeting @ North Pole

<b>INCIDENT OBJECTIVES</b>	1. Incident Name <b>Stuart Creek 2</b>	2. Date Prepared <b>7-9-13</b>	3. Time Prepared <b>2300</b>
4. Operational Period <b>7-10-13                      0800-2200 hours</b>			
5. General Control Objectives for the Incident (Include alternatives) <b><u>Control Objectives:</u></b> Keep Fire: <ul style="list-style-type: none"> <li>- North of the Salcha River.</li> <li>- East of a line along the transmitter road, north to the Chena River and south along the Trans-Alaska Pipeline to the Salcha River.</li> <li>- West of the south fork Chena River, south along eastern boundry of the Training Area, south to the Salcha River.</li> <li>- South of the Chena River.</li> </ul> <b><u>Management Objectives:</u></b> <ul style="list-style-type: none"> <li>- Provide for firefighter and public safety utilizing LCES, 10s / 18s, and risk management from IRPG and required UXO briefings.</li> <li>- Maintain and protect the integrity of infrastructure within Yukon Training Area and Eielson AFB.</li> <li>- Provide protection to private residences, cabins, improvements and jurisdictional lands within and adjacent to the fire area.</li> <li>- Minimize or mitigate threats to known cultural resources by utilizing READs and/or archeologists.</li> <li>- Avoid application of retardant within 300 feet of stream channels and water ways.</li> <li>- Coordinate and communicate fire information with the public and all stakeholders.</li> </ul>			
6. Weather Forecast for Period <b>TEMPERATURES: 55 to 60.</b> <b>MIN HUMIDITY: 55 to 60%.</b> <b>WINDS (EYE LEVEL): VALLEYS: West to Northwest wind 6 to 10 mph. Gusts to 17 mph through the afternoon through west-east valleys. RIDGETOPS: West to Northwest wind 10 to 15 mph. Gusts to 25 mph in the morning. Winds diminishing to light and variable after 6 pm.</b>			
7. General Safety Message <b>WEAR YOUR PERSONAL PROTECTIVE EQUIPMENT DURING ALL OPERATIONS, Eye Protection is a must you only get <u>two</u>.</b>  See attached for additional			
<b>B. Attachments (mark if attached)</b>			
<input checked="" type="checkbox"/> Incident Objectives - ICS 202	<input checked="" type="checkbox"/> Division Assignment List - ICS 204	<input checked="" type="checkbox"/> Medical Plan - ICS 206	
<input checked="" type="checkbox"/> Organization List - ICS 203	<input checked="" type="checkbox"/> Safety Message	<input checked="" type="checkbox"/> Human Resource Message	
<input checked="" type="checkbox"/> Fire Weather Forecast	<input checked="" type="checkbox"/> Incident Safety Analysis - ICS 215A	<input checked="" type="checkbox"/> Camp Map	
<input checked="" type="checkbox"/> Fire Behavior Forecast	<input checked="" type="checkbox"/> Air Ops Summary - ICS 220	<input checked="" type="checkbox"/> Transportation	
<input checked="" type="checkbox"/> Trainee Data Form	<input checked="" type="checkbox"/> Communications Plan - ICS 205	<input checked="" type="checkbox"/> Unit Log - ICS 214	
9. Prepared by (Planning Section Chief) 	10. Approved by (Incident Commander) 		

ICS Form 203 ORGANIZATION ASSIGNMENT LIST		1. INCIDENT NAME Stuart Creek 2	2. DATE PREPARED 7-9-13	3. TIME PREPARED 1800
<b>5. INCIDENT COMMAND STAFF</b>		<b>4. OPERATIONAL PERIOD (DATE/TIME)</b> 7-10-13 0800-2200		
<b>Position</b>	<b>Name</b>	<b>9. OPERATIONS SECTION</b>		
INCIDENT COMMANDER	Jerry McGowan	CHIEF	Steve Parr / Joe Reyes	
DEPUTY		PLANNING OPS	Kathy Kirkpatrick(t)/Bobby Shindelar (t)	
SAFETY OFFICER	Jennifer Boyd / Doug McKelvey (t)	DEPUTY OPS		
INFORMATION OFFICER	Hadley / Phelps / Gibbs (t)	CONTINGENCY OPS		
LIAISON OFFICER	Steve Negro / Dennis Orbus	<b>a. BRANCH I</b>		
HUMAN RESOURCE SPECIALIST	Michael Donch	BRANCH DIR	Linda Szczepanik / John Flores (t)	
<b>6. AGENCY REPRESENTATIVES</b>		DIVISION	S/A	Reed Callis
<b>AGENCY</b>	<b>NAME</b>	DIVISION	M	Jim Snow
US Army	Col. Johnson	GROUP	P	Josh Turnbow / Joe Forthefer (t)
US Air Force	Lt. Col. Sieve / Lt. Col Liberman	DIVISION	R	Robert Yeager
Eastern Area IARR	To / Oliver / Clark / Greaves	DIVISION	Structure	Bob Myers
Alaska State Parks	Lona Boyarski	DIVISION		
Alaska Fire Services	Randy Lenon	<b>b. BRANCH III</b>		
Fairbanks N.Star Borough	Dave Gibbs	BRANCH DIRECTOR	Ron Garcia	
Alaska DNR	Ed Sanford	DIVISION	B	Peter Kelley / Jon Holmes (t)
Alaska State Troopers	Capt. Barrick	DIVISION	C	Rick Marinelli / Kevin Loballa (t)
		DIVISION	F	Paul Leucsh, Jason Devcich (t)
<b>7. PLANNING SECTION</b>		DIVISION	L	Bill Steers / Phil OoSahwe (t)
CHIEF	Gary Montgomery	DIVISION		
CHIEF	Christie Neill	DIVISION		
RESOURCES UNIT	Fountain / Escalera / Schillinger	DIVISION		
SITUATION UNIT	Tad Morelock	DIVISION		
DOCUMENTATION UNIT		<b>c. BRANCH - CONTINGENCY</b>		
DEMOBILIZATION UNIT	John Roberts		Wayne Cook	
CTSP	Jonathan Wilson			
TNSP	Robert Rivell			
FBAN	Bob Patton			
IMET	Dan Byrd / Christan Cassell (t)	FIREBIRD STG	Kelly Helget	
GISS	Melanie Hans / James Roberts			
READ	Buzby / Rees			
Range Control	(Day) Beck / (Night) Stepp			
<b>8. LOGISTICS SECTION</b>		<b>d. AIR OPERATIONS BRANCH</b>		
CHIEF	Rich Davis	AIR OPERATIONS BR. DIR.	Jason Nava	
CHIEF	Jim Hogg	AIR TACTICAL GROUP SUP.	Russ Gripp	
<b>a. SUPPORT BRANCH</b>		AIR SUPPORT GROUP SUP	Lisa Cardoza	
SECURITY		HELICOPTER COORDINATOR		
SUPPLY UNIT	Jeff Carter			
FACILITIES UNIT	Tim Gardner			
GROUND SUPPORT UNIT	Dave Trussell			
<b>b. SERVICE BRANCH</b>		<b>10. FINANCE/ADMINISTRATION SECTION</b>		
COMMUNICATIONS UNIT	Kody Kerwin	CHIEF	Robbin Ekman	
COMMUNICATIONS MANG	Scott LaRue	CHEIF	Rene White	
FOOD UNIT	Ken Haberl	TIME UNIT	Glenda Lindsay	
RECEIVING	Lori Cayo	PERSONAL TIME	Renee Madrid	
ORDERING	Mike Worford	COMPENSATION/CLAIMS UNIT	Lisa Dow (t)	
MEDICAL UNIT	Matt Lipson	COST UNIT	Christal Rohrbach / Robert Taylor (t)	
EQUIPMENT MANAGER	Davis Harsh	EQTR	Sandy Tarvin	
<b>PREPARED BY (RESOURCES UNIT)</b>				
Jason Schillinger				



# Stuart Creek #2 Fire Weather Forecast



**FORECAST NO:** 5  
**PREDICTION FOR:** Wednesday 10 July 2013

**NAME OF FIRE:** Stuart Creek #2  
**UNIT:** MID

**SHIFT DATE:** June 9<sup>th</sup>, 2013

**Incident Meteorologist:**  
Dan Byrd  
Christian Cassell (T)

**FORECAST ISSUED:** 2000 ADT July 9<sup>th</sup>, 2013

**WEATHER DISCUSSION:** Light rain this morning gives way to scattered showers with isolated thunderstorms before partial clearing in the evening. A pattern change begins late Wednesday into Thursday with the flow becoming northeasterly, which is favorable for downslope warming and drying. Gusty winds are expected late Thursday afternoon into Friday with temperatures warming and relative humidities lowering.

**WEATHER FORECAST WEDNESDAY DAY SHIFT:**

**WEATHER:** Rain in the morning...then scattered showers with isolated lightning through late afternoon...then partial clearing in the evening.

**TEMPERATURES:** 55 to 60.

**MIN HUMIDITY:** 55 to 60%.

**WINDS (EYE LEVEL): VALLEYS:** West to Northwest wind 6 to 10 mph. Gusts to 17 mph through the afternoon through west-east valleys. **RIDGETOPS:** West to Northwest wind 10 to 15 mph. Gusts to 25 mph in the morning. Winds diminishing to light and variable after 6 pm.

**CHANCE OF WETTING RAINS:** 80%

**LAL:** 2

**WEATHER FORECAST WEDNESDAY NIGHT:**

**WEATHER:** Mostly cloudy with a slight chance of a shower.

**MIN TEMPERATURES:** 45 to 52.

**MAX HUMIDITY:** 70 to 80%

**WINDS (EYE LEVEL): DOWN VALLEY/DOWNSLOPE** wind 3 to 6 mph. Otherwise Northeast wind 1 to 3 mph.

**CHANCE OF WETTING RAINS:** < 5%

**LAL:** 1

**OUTLOOK FOR THURSDAY:**

**WEATHER:** Cloudy. A slight chance of a shower in the morning. Clearing in the afternoon and evening.

**TEMPERATURES:** 65 to 72.

**MIN HUMIDITY:** 30 to 35%

**WINDS (EYE LEVEL):** East to Northeast wind 5 to 10 mph increasing to 8 to 12 mph in the evening. **VALLEYS:** East wind 3 to 7 mph with gusts to 12 mph in the afternoon. Gusts increasing to 15 to 20 mph in the evening with only minor RH recoveries overnight Thursday night.

**CHANCE OF WETTING RAINS:** 0%

**LAL:** 1

**EXTENDED FORECAST FOR FRIDAY through SATURDAY:** High pressure overhead will allow for ample sunshine and a continued warming trend. Gusty east winds will gradually diminish through Friday. Saturday and Sunday appear to be very warm and dry with RH values dropping into the mid to upper teens.

Sunrise Tuesday: 0336 ADT    Sunset Tuesday: 0013 ADT  
Tuesday Observation summary at Stuart Creek RAWS:

Max T: 59

Min RH: 57

Max Wind: WSW 10g17 mph

Rain Accumulation (0000 – 2000): 0.08 inches

## FIRE BEHAVIOR FORECAST

<b>FORECAST NUMBER:</b> # 8	<b>TYPE OF FIRE:</b> Wildfire
<b>FIRE NAME:</b> Stuart Creek #2	<b>OPERATIONAL PERIOD:</b> Day – July 10, 2013
<b>DATE ISSUED:</b> 07/09/13	<b>TIME ISSUED:</b> 2100 hrs
<b>UNIT:</b> BLM	<b>SIGNED:</b> Bob Patton (FBAN)

### WEATHER SUMMARY:

**Temperature:** 55-60 degrees Minimum RH: 55-60% Winds: Eye level west-northwest 6-10 mph with gusts to 17 mph. Ridgetop west-northwest 10-15 mph. Gusts to 25 mph in the morning.

**See attached Fire Weather Forecast for more details.**

Take weather observations, and call in hourly to Communications. Please include location and elevation.

### FIRE BEHAVIOR

#### GENERAL:

80% chance of wetting today with a <5% chance of wetting rain tomorrow. Rainfall amounts from this storm so far have ranged from .10" on the western portion; .8" on the eastern portion; and .5" on the southern portion of the fire perimeter. The predicted Fire Weather Index (WFI) for today is 5 low. The Buildup Index (the total amount of fuel available for combustion) has dropped from 138 to a predicted Buildup Index of 87. Another .10"-.25" of rain could fall across the fire perimeter today. Even with gusty ridgetop winds in the morning hours, minimal fire behavior is anticipated for today.

#### FUELS:

##### Black spruce forest worst case scenario:

FL Head: Up to 7'

ROS Head: Up to 5 ch/hr

##### Spruce/Hardwood mix worst case scenario:

FL Head: Up to 3'

ROS Head: Up to 6 ch/hr

**Spotting distance:** n/a

**Probability of ignition:** 0%.

### AIR OPERATIONS:

Gusty ridgetop winds may affect air operations in the morning

### SAFETY

Review the IRPG page 75 for thunderstorm safety. .



<b>Division Assignment List</b>	1. Branch <b>I</b>	2. Division/Group <b>M</b>
---------------------------------	-----------------------	-------------------------------

3. Incident Name MID Stuart Creek 2	4. Operational Period 07/10/13 Wednesday 7/10/13 Shift 0800 - 2200
--	---

5. Operations Personnel

Operations Chief	STEVE PARR / JOE REYES	Division/Group	JAMES SNOW
Operations Chief	KIRKPATRICK (t) / SHINDELAR (t)	Air Attack Supervisor	RUSSELL GRIPP
Branch Director	SZCZEPANIK / FLORES (t)	Safety Officer	JENNIFER BOYD / D, MCKELVEY (t)

6. Resources Assigned this Period

Strike Team/Task Force/ Resource Designator	Leader	Num of Pers.	Trans. Y/N	Drop Off PT./Time	Pick Up PT./Time
CREW T1 MIDNIGHT SUN IHC 7/18	JACOB B LIVINGSTON	19	N	FB SPIKE 0800	FB SPIKE 2200
CREW T1 WOLF CREEK 7/13	ERIC MILLER	20	N	FB SPIKE 0800	FB SPIKE 2200
CREW T2IA MCKENZIE RIVER 7/16	NICHOLAS BEDDOW	20	N	FB SPIKE 0800	FB SPIKE 2200
CREW T2IA CENTRAL OREGON 7/16	ROD SAMS	20	N	FB SPIKE 0800	FB SPIKE 2200
CREW T2 RUBY 7/15	ALLEN TITUS	17	N	FB SPIKE 0800	FB SPIKE 2200
CREW T2IA MHR #1	P. SMITH /E. HARIMON(t)	20	N	FB SPIKE 0800	FB SPIKE 2200
W/T 85 ELISON AFB		1	N	FB SPIKE 0800	FB SPIKE 2200
W/T CHIPS 1 E-18	ZACK STOCKTON	1	N	FB SPIKE 0800	FB SPIKE 2200
DOZER 12	SEIBOLD/ FORTUNE	2	N	FB SPIKE 0800	FB SPIKE 2200
DOZER 34	HOWARD/ BORASH	2	N	FB SPIKE 0800	FB SPIKE 2200
DOZER 30	GARRY PFALMER	1	N	FB SPIKE 0800	FB SPIKE 2200
TFLD	FLESHER/ENO-HENDRE(t)	2	N	FB SPIKE 0800	FB SPIKE 2200
FOBS	CHAPMAN / SOLOMAN (t)	1	N	FB SPIKE 0800	FB SPIKE 2200
HEQB	SARABIA / POTVIN (t)	2	N	FB SPIKE 0800	FB SPIKE 2200
HEQB (t)	ADAM DEALAMAN	1	N	FB SPIKE 0800	FB SPIKE 2200
SOFR	CARY BROWN	1	N	FB SPIKE 0800	FB SPIKE 2200
SOFR	DON GARRINGER	1		FB SPIKE 0800	FB SPIKE 2200
EMT IMSA	MILLIE CARSON	1	N	FB SPIKE 0800	FB SPIKE 2200
EMTF	PATRICK TOLAND	1	N	FB SPIKE 0800	FB SPIKE 2200

7. Control Operations  
Construct dozer and hand line as direct as possible from Branch break at DP 13 on Beaver Creek Rd north to Division M/P break to keep fire from spreading west towards DET 460.

8. Special Instructions  
When observable ordnance are encountered, leave them intact, **DO NOT TOUCH**, contact DIVS and Range Control. When observable cultural resources are encountered, leave them intact and document location. Notify READ. Only aviation resources will be used within impact areas, except on hardened roads coordinated with military Explosive Ordnance Disposal (EOD) range control personnel. 1 mile buffer added to limited entry area. Note location of damaged electrical infrastructure and notify DIVS.

9. Division/Group Communications Summary

Function	Frequency - RX	Frequency - TX	Tone	System	Channel	System	Channel
Command	170.0125N	165.2500N	123.0	NIFC	3		
Tactical Div/Group	168.2500N	168.2500N		NIFC	7		
Logistics							
Air to Ground	169.1500N	169.1500N		NIFC	12		

Prepared by (Resource Unit Leader) MELODY FOUNTAIN	Approved by (Planning Section Chief) <i>[Signature]</i>	Date Prepared 07/09/13	Time Prepared 1351
---	--	---------------------------	-----------------------









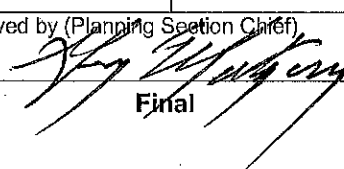




<b>Division Assignment List</b>		1. Branch <b>III</b>	2. Division/Group <b>F</b>			
3. Incident Name MID Stuart Creek 2		4. Operational Period 07/10/13 Wednesday 7/10/13 Shift 0800 - 2200				
5. Operations Personnel						
Operations Chief	STEVE PARR / JOE REYES	Division/Group	PAUL LEUSCH / JASON DEVCICH (t)			
Operations Chief	KIRKPATRICK (t) / SHINDELAR (t)	Air Attack Supervisor	RUSSELL GRIPP			
Branch Director	RON GARCIA	Safety Officer	JENNIFER BOYD / D. MCKELVEY (t)			
6. Resources Assigned this Period						
Strike Team/Task Force/ Resource Designator	Leader	Num of Pers.	Trans. Y/N	Drop Off PT./Time	Pick Up PT./Time	
CREW T1 REDDING IHC 7/10	DAN MALLIA	20	N	FB SPIKE 0800	FB SPIKE 2200	
CREW T2IA UMPQUA 6 7/16	RICHARD TINGLE	20	N	FB SPIKE 0800	FB SPIKE 2200	
CREW T2 UPPER KALSKAG 7/18	JEFF KERR	16	N	FB SPIKE 0800	FB SPIKE 2200	
CREW T2 ST. MARY'S 7/18	LARRY OLIN	16	N	FB SPIKE 0800	FB SPIKE 2200	
CREW - T2IA - PAS # 1	JOHN HECKER	20	N	FB SPIKE 0800	FB SPIKE 2200	
ENG 20 FORT GREELEY	PLUMBLY	2	N	FB SPIKE 0800	FB SPIKE 2200	
WT MIDSTATE T2 7/15	BRIAN ARMSTRONG	1	N	FB SPIKE 0800	FB SPIKE 2200	
WT GOLDSTREAM T2 7/11	DAVE HYLAND	1	N	FB SPIKE 0800	FB SPIKE 2200	
W/T MCAFFE E-68	CODY SCHOLLE	1	N	FB SPIKE 0800	FB SPIKE 2200	
SKIDG SOFT TRACK E-61	JOSH COVEY	1	N	FB SPIKE 0800	FB SPIKE 2200	
SKIDG FAIRBANKS CONST #1 7/16	RICHARD BIENVENUE	1	N	FB SPIKE 0800	FB SPIKE 2200	
SKIDG FAIRBANKS CONST #2 7/15	RUSSEI CAMP	1	N	FB SPIKE 0800	FB SPIKE 2200	
DOZER RC 1		1	N	FB SPIKE 0800	FB SPIKE 2200	
DOZER RC 2		1	N	FB SPIKE 0800	FB SPIKE 2200	
ARMY DUMP TRUCK RC 7		1	N	FB SPIKE 0800	FB SPIKE 2200	
TFLD	SITZ / KEMERY	3	N	FB SPIKE 0800	FB SPIKE 2200	
TFLD	HARVEY / FARINHOLT (t)	2	N	FB SPIKE 0800	FB SPIKE 2200	
TFLD	MAUPIN (t)	2	N	FB SPIKE 0800	FB SPIKE 2200	
EMT (IMS-M/T)	GREG / POXLEITNER	2	N	FB SPIKE 0800	FB SPIKE 2200	
SOFR	TOM DAER	1	N	FB SPIKE 0800	FB SPIKE 2200	

7. Control Operations  
 Hold fire north of Quarry Rd from Division C/F break to Division F/L break at Quarry Manchu Rd. Extinguish heat where fire's edge meets road. Mop up spot fires on south side of Quarry Rd. Patrol for spots across Quarry Rd to prevent fire spread to the south.

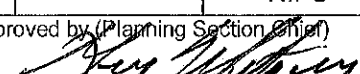
8. Special Instructions  
 When observable ordnance are encountered, leave them intact, **DO NOT TOUCH**, contact DIVS and Range Control. When observable cultural resources are encountered, leave them intact and document location. Notify READ. Only aviation resources will be used within impact areas, except on hardened roads coordinated with military Explosive Ordnance Disposal (EOD) range control personnel. 1 mile buffer added to limited entry area. Note location of damaged electrical infrastructure and notify DIVS. -FT WAINWRIGHT AMULANCE WILL BE @ DP30-

9. Division/Group Communications Summary							
Function	Frequency - RX	Frequency - TX	Tone	System	Channel	System	Channel
Command	168.1000N	170.4500N	123.0	NIFC	1		
Tactical	168.0500N	168.0500N		NIFC	4		
Logistics							
Air to Ground	169.1500N	169.1500N		NIFC	12		
Prepared by (Resource Unit Leader) MELODY FOUNTAIN		Approved by (Planning Section Chief) 			Date Prepared 07/09/13	Time Prepared 1351	

<b>Division Assignment List</b>		1. Branch <b>III</b>	2. Division/Group <b>L</b>			
3. Incident Name MID Stuart Creek 2		4. Operational Period 07/10/13 Wednesday 7/10/13 Shift 0800 - 2200				
5. Operations Personnel						
Operations Chief	STEVE PARR / JOE REYES	Division/Group	BILL STEERS / PHIL OOSHAWE (t)			
Operations Chief	KIRKPATRICK (t) / SHINDELAR (t)	Air Attack Supervisor	RUSSELL GRIPP			
Branch Director	RON GARCIA	Safety Officer	JENNIFER BOYD / D. MCKELVEY (t)			
6. Resources Assigned this Period						
Strike Team/Task Force/ Resource Designator	Leader	Num of Pers.	Trans. Y/N	Drop Off PT./Time	Pick Up PT./Time	
CREW T1 -ZIGZAG IHC 7/17	DIEGO MENDIOLA	20	N	FB SPIKE 0800	FB SPIKE 2200	
CREW T1 ROGUE RIVER IHC 7/13	AARON SCHUH	20	N	FB SPIKE 0800	FB SPIKE 2200	
CREW T2IA GANNETT GLACIER 7/14	JOSHUA LEUTZINGER	20	N	FB SPIKE 0800	FB SPIKE 2200	
CREW T2IA SANTIAM RIVER 7/16	JONATHAN BLACKBURN	19	N	FB SPIKE 0800	FB SPIKE 2200	
CREW T2IA PAS # 2 7/21	DAVID FELIX	20	N	FB SPIKE 0800	FB SPIKE 2200	
DOZER BLACK GOLD E-207	ROBERT PACKER	1	N	FB SPIKE 0800	FB SPIKE 2200	
DOZER EISBERRY E-31	WADE HAURY	1	N	FB SPIKE 0800	FB SPIKE 2200	
DOZER RC-3		1	N	FB SPIKE 0800	FB SPIKE 2200	
DOZER RC-4		1	N	FB SPIKE 0800	FB SPIKE 2200	
BOBCAT RC-6		1	N	FB SPIKE 0800	FB SPIKE 2200	
GRADER RC-5		1	N	FB SPIKE 0800	FB SPIKE 2200	
HEQB	WERNER KREGOR	1	N	FB SPIKE 0800	FB SPIKE 2200	
TFLD	RYAN CUMBOW	1	N	FB SPIKE 0800	FB SPIKE 2200	
TFLD	JENNIFER HARRIS	1	N	FB SPIKE 0800	FB SPIKE 2200	
FOBS	NIC ELMQUIST	1	N	FB SPIKE 0800	FB SPIKE 2200	
FOBS (t)	NATE BARTELS	1	N	FB SPIKE 0800	FB SPIKE 2200	
IMS-M	DOUGLAS GREG	1	N	FB SPIKE 0800	FB SPIKE 2200	
IMS-T	DAVID POXLEITNER	1	N	FB SPIKE 0800	FB SPIKE 2200	
SOFR	TOM PLYMALE	1	N	FB SPIKE 0800	FB SPIKE 2200	
AMBULANCE AT DP 30	FT WAINWRIGHT	11	N	FB SPIKE 0800	FB SPIKE 2200	

7. Control Operations  
 Hold fire east of dozer and hand line from L/F Division break through Moose Creek to Branch I/III break at DP 13 on Beaver Creek Rd. Construct line as direct as needed to prevent fire from progressing to west toward Manchu Range.

8. Special Instructions  
 When observable ordnance are encountered, leave them intact, **DO NOT TOUCH**, contact DIVS and Range Control. When observable cultural resources are encountered, leave them intact and document location. Notify READ. Only aviation resources will be used within impact areas, except on hardened roads coordinated with military Explosive Ordnance Disposal (EOD) range control personnel. 1 mile buffer added to limited entry area. Note location of damaged electrical infrastructure and notify DIVS.

9. Division/Group Communications Summary							
Function	Frequency - RX	Frequency - TX	Tone	System	Channel	System	Channel
Command	170.1000N	162.1625N		NIFC	2		
Tactical	166.7250N	166.7250N		NIFC	6		
Logistics							
Air to Ground	169.1500N	169.1500N		NIFC	12		
Prepared by (Resource Unit Leader) MELODY FOUNTAIN		Approved by (Planning Section Chief) 		Date Prepared 07/09/13		Time Prepared 1351	







AIR OPERATIONS SUMMARY		PREPARED BY: Jason Nava, AOB		DATE/TIME PREPARED: 7/9/2013 2000 hrs.									
1. INCIDENT NAME: Stuart Creek # 2		7/10/2013		1000									
2. OPERATIONAL PERIOD DATE:		START TIME: 1000		END TIME: 2400									
3. REMARKS (Safety Notes, Hazards, Air Operations, Special Equipment, e tc.): 150' Tower erected at Bravo 2 FIXED WING BE AWARE OF HELIBASE LOCATION 12 HOUR DUTY DAY RESTRICTIONS FOR TANKERS STARTING LADD tower control is operational at this time-use caution with in/out traffic Assume roads have wires Range Control Freq 125.300, Military Aircraft only in the Impact Zone, Use caution when smoke is heavy and visibility is limited,		4. Medivac C-GIRZ Hoist Available request		5. TFR: TFR 3/8848 in place. Polygon shape. At and below 5000 feet MSL.									
6. PERSONNEL		Phone		FM									
AOBD: Jason Nava		(949) 812-8702		AM									
ASGS: Lisa Cardoza		(949) 616-4226		FREQUENCIES									
HLCO:		AIR/GROUND:		AIR/AIR FW: BRIEFING									
ATGS: Russ Grip		(530) 598-4172		124.2500									
ATGS: Jack Firestone		(907) 388-6362		132.0250									
ATGS: Dean Thornberry		(907) 356-5659		123.1500									
AFS Helibase: Tom Schmidt		(406) 212-4822		UYT Blue: 166.875 DECK: 163.100									
HEB 1: Jesse Best 036				Primary 169.1500 Secondary 166.6750									
Deck:		DECK FREQ:		163.100									
UYT		TOLC FREQ:											
8. FIXED-WING #Available/Type/Make-Model/FAA N#/ & Bases Airtankers: T-152, T-155, T-142, T-144, T-145, Scoopers: 264,267,885,202,203,204,891,262 Available at LADD, order direct through UYT Dispatch													
Lead planes & ASMs: Available at LADD, order direct through UYT Dispatch													
ATGS Aircraft: Commander N848CE Commander 1010F, based at LADD, ASTAR 911CV													
9. HELICOPTERS (Use Additional Sheets As Necessary)													
FAA N#	T Y	MAKE	BASE	AVAIL	START	REMARKS	FAA N#	T Y	MAKE/MODEL	BASE	AVAIL	START	REMARKS
1		Chinook, U.S. Army	LADD	1000	1100	Fly reservation only	*571SC	2	Bell 212	FIRE BIRD	1000	1030	
1		Chinook, U.S. Army	LADD	1000	1100	Fly reservation only	516LE	3	Bell 206L3 907-750-6620	LADD	1000	1030	On loan
1		Blackhawk, U.S. Army	LADD	1000	1100	Fly reservation only	*767H	3	Bell 206L4	FIRE BIRD	0900	0930	PSD equipped with operator
16920	2	Bell 212	Firebird	1100	1130	On loan	*911CV	3	B-3 A-Star	LADD	1000	1030	AA platform A-8
*CGIRZ	2	Bell 212	Firebird	1000	1030	With 8 person crew	*97HJ	2	Bell 205	FIRE BIRD	0900	0930	RAP

FAA N#	T Y	MAKE	BASE	AVAIL	START	REMARKS	FAA N#	T Y	MAKE/MODEL	BASE	AVAIL	START	REMARKS
740	1	National Guard Blackhawk	LADD	1000	1100	Ty Miller 907-460-7530							
741	1	National Guard Blackhawk	LADD	1000	1100								
		Fairbanks Memorial	155.160										

220 ICS (2/99)

NEES 1351

# SAFETY MESSAGE

## Stuart Creek 2

July 10, 2013

**“Safety Objectives: No Serious Injuries, Ensure LCES at ALL times”**

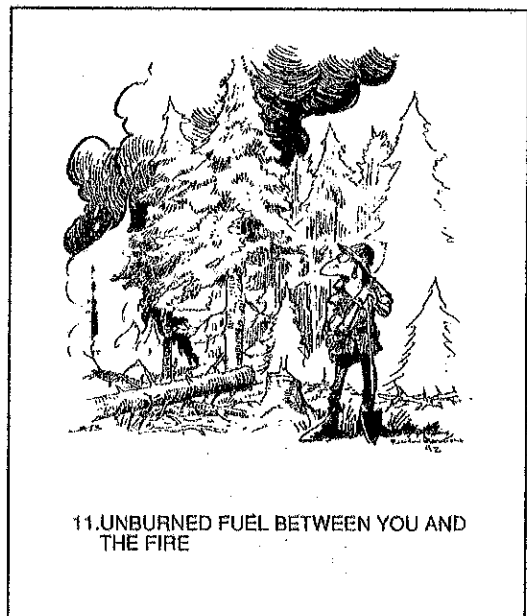
*Take the Time For A Good Crew Briefing*

**Change up crew briefings; ask questions see if they're listening**

**Full PPE, no exceptions no excuses.**

- Hydration needs to be stressed, watch out for each other.
- "Slow Down" we've got complaints from Range Control, this is unacceptable.
- Maintain vehicle spacing and keep lights on.
- Post Lookouts ensure communication, use qualified Personnel.
- Rest your folks, the long daylight can wear them down quick.
- **WEAR YOUR PERSONAL PROTECTIVE EQUIPMENT DURING ALL OPERATIONS, Eye Protection is a must you only get two.**
- Firebird Spike is your home; keep it clean, use the port-a-johns not the woods. If you must go on the line, bury it.
- Camp Crud is creeping in. Wash your hands often.

- **Key to an effective briefing:**
  - Clear, complete, concise description of:
    - LCES
    - Situational hazards
    - Fire environment
    - People and resources
    - Planned strategy and tactics
  - Provide respectful, candid, non-threatening, unhurried feedback opportunity.
  - Attentive listening and responsive feedback.



Prepared by: Jennifer Boyd/Safety Officer Date: 7/9/13

## INCIDENT RISK ANALYSIS (ICS 215a)

DIV	HAZARDOUS ACTIONS / CONDITIONS	MITIGATIONS / WARNINGS / REMEDIES
ALL	LCES	<ul style="list-style-type: none"> <li>• Difficult terrain to post lookouts</li> <li>• Use air attack when necessary</li> <li>• Maintain situational awareness</li> </ul>
ALL	RAIN	<ul style="list-style-type: none"> <li>• Roads in the fire area can get very slick after wetting rains</li> <li>• Slow down and use extreme caution</li> <li>• 2wd vehicles not recommended on non-graveled roads.</li> </ul>
ALL	UNEXPLODED ORDNANCE (UXO)	<ul style="list-style-type: none"> <li>• Recognize-Retreat-Report</li> <li>• DO NOT PICK UP OR TOUCH</li> <li>• Avoid radio transmissions near UXO</li> <li>• Withdrawal to a safe distance</li> <li>• Flag or Identify area where object is located</li> <li>• Deny entry until Ordnance Disposal personnel arrive</li> <li>• Report to you supervisor</li> <li>• All personnel must have UXO training prior to work assignment</li> </ul>
ALL	AVIATION	<ul style="list-style-type: none"> <li>• Clear personnel out of target area prior to retardant or bucket drops.</li> <li>• Get clear of dead snags, tops, limbs in drop area.</li> <li>• Working in an area covered by wet retardant should be done with caution due to slippery surfaces.</li> </ul>
ALL	FIRE BEHAVIOR	<ul style="list-style-type: none"> <li>• Buildup Index ( BUI) values have risen rapidly, well above thresholds for crown fire in spruce, and intense burning in tundra fuels.</li> <li>• Monitor current weather conditions and forecasts. Make sure all personnel receive thorough briefings every shift.</li> <li>• Maintain adequate escape routes and safety zones. Advise all personnel if these are compromised or changed. Set trigger points when appropriate.</li> <li>• Adhere to 10 Std Orders, mitigate 18 situations.</li> <li>• Maintain Situational Awareness.</li> </ul>
ALL	FATIGUE	<ul style="list-style-type: none"> <li>• Be alert for signs of fatigue and take breaks as necessary.</li> <li>• Maintain 2:1 work/rest ratio.</li> <li>• Monitor incoming resources for level of fatigue.</li> <li>• Be aware of fatigue associated with sunrise/sunset if from out of state</li> </ul>
ALL	HYDRATION	<ul style="list-style-type: none"> <li>• Drinking water before, during and after shifts, up to 1.5 gal. per shift.</li> <li>• Be alert for signs of heat stress in yourself and others.</li> </ul>
ALL	ATV USE	<ul style="list-style-type: none"> <li>• Operators must have proper PPE suitable for the vehicle</li> <li>• Only carded and qualified operators</li> <li>• Ensure proper Safety briefings.</li> <li>• Provide daily equipment inspections.</li> </ul>
ALL	INDIRECT ATTACK	<ul style="list-style-type: none"> <li>• Extra care with situational awareness due to difficulty in locating lookouts</li> <li>• Carefully monitor weather watching for decreasing RH values</li> <li>• Use lookouts as much as possible/practical in this terrain</li> <li>• Have escapes routes planned and make them known</li> <li>• Ensure communications with your supervisor</li> </ul>
ALL	BOAT SAFETY	<ul style="list-style-type: none"> <li>• Vessels must only be operated by qualified personnel</li> <li>• All passengers must have pre trip safety briefing</li> <li>• PFDs worn at all times &amp; worn correctly</li> </ul>
ALL	STRUCTURE DEFENSE	<ul style="list-style-type: none"> <li>• Base all actions on current and expected fire behavior</li> <li>• Ensure escape routes or safety zones prior to arrival of fire</li> <li>• Avoid parking under power lines</li> </ul>

ALL	Hygiene	<ul style="list-style-type: none"> <li>• <b>Prolonged spike camps are always at risk for Camp Crud</b></li> <li>• Wash hands after each bathroom visit and before eating.</li> <li>• Keep camp area clean and free of garbage.</li> <li>• Thoroughly wash shared cooking pots and utensils.</li> <li>• Get hand sanitizer from medical to use when away from washing stations.</li> <li>•</li> </ul>	
ALL	WILDLIFE-BEAR-MOOSE	<ul style="list-style-type: none"> <li>• <b>Bears are the Most Dangerous when:</b> You encounter sow with cubs. They feel threatened. You are obstructing their path .You encounter their den, feeding area or trail.</li> <li>• <b>Safety in Numbers:</b> Travel with someone else and avoid hiking at night. Stock animals seem to be advantageous to travel with.</li> <li>• <b>DO NOT RUN:</b> When you run you may look like prey to the bear.</li> <li>• Do not threaten the bear and force it to fight back.</li> <li>• Allow the bear a way out with dignity.</li> <li>• Pretend you are not afraid.</li> <li>• <b>Avoid sows with cubs when at all possible</b></li> <li>• Back away slowly, but deliberately, in the direction from which you came and at a light angle so that you are moving across her vision. Bear depth perception is poor and if you move directly backwards, it may look like you are moving towards her.</li> <li>• <b>Moose:</b> Stay Back give them their space especially cows w/ calf's, moose have poor eyesight, if charged step behind a tree or get out of sight.</li> </ul>	
INCIDENT NAME: <b>Stuart Creek 2</b>  ICS 215a		DATE PREPARED: <b>July 9<sup>th</sup>, 2013</b>	OPERATIONAL PERIOD <b>0800-2200</b> <b>July 10, 2013</b> Prepared by J.Boyd
		TIME PREPARED: 1100 hrs	

INCIDENT RADIO COMMUNICATIONS PLAN		Incident Name <b>STUART CREEK 2 AK-MID-000280</b>		Date/Time Prepared 07/09/13		Operational Period Date/Time DAY & NIGHT SHIFT 07/10/13			
<b>Only frequencies listed on this 205 are authorized for use on this incident.</b>									
<b>Hand programmers accept all responsibility for the use of unauthorized frequencies.</b>									
Ch #	Function	Channel Name	Assignment	RX Freq N or W	RX Tone	TX Freq N or W	TX Tone	Mode	Remarks
1	COMMAND	CMD 1	BRANCH III	168.1000N	123.0	170.4500N	123.0	A	POLE HILL
2	COMMAND	CMD 2	BRANCH III	170.1000N		162.1625		A	LINKED TO BLM-UYT-FAIRBANKS
3	COMMAND	CMD 3	BRANCH I	170.0125N	123.0	165.2500N	123.0	A	
4	TACTICAL	TAC 1	DIVISION A / S / F	168.0500N		168.0500N		A	
5	TACTICAL	TAC 2	DIVISION B / R	168.2000N		168.2000N		A	
6	TACTICAL	TAC 3	DIVISION L	166.7250N		166.7250N		A	
7	TACTICAL	TAC 4	DIVISION M / C	168.2500N		168.2500N		A	
8	COMMAND	CMD 4	ICP	170.3625N	123.0	163.3875N	123.0	A	NORTH POLE ICP
9									
10	TACTICAL	TAC 5	DIVISION P	166.7750N		166.7750N		A	STATE TACTICAL 2
11	TACTICAL	TAC 6	STRUCTURE GROUP	159.3750N		159.3750N		A	STATE TACTICAL 1
12	AIR TO GROUND	A/G 1	A/G TACTICAL & LOGISTICAL	169.1500N		169.1500N		A	
13	AIR TO GROUND	A/G 2	A/G ROTOR	166.6750N		166.6750N		A	
14	URGENT AIR CONTACT	AIR GUARD	ALL DIVISIONS	168.6250N		168.6250N	110.9	A	USE ONLY FOR URGENT AIRCRAFT CONTACT, USE TONE 1
15									
16	URGENT AIR CONTACT	AIR GUARD	ALL DIVISIONS	168.6250N		168.6250N	110.9	A	USE ONLY FOR URGENT AIRCRAFT CONTACT, USE TONE 1
Prepared by				Incident Location					
Kody Kerwin, COML CIIMT #1				North Pole, AK LAT: N 64 45.1060' LONG: W 147 20.9309'					

*Kody Kerwin*



<b>MEDICAL PLAN</b> 206 ICS	1. INCIDENT NAME	2. DATE PREPARED	3. TIME PREPARED	4. OPERATIONAL PERIOD
	Stuart Creek 2	July 9, 2013	2000	July 10, 2013 0800-2200

**5. INCIDENT MEDICAL AID STATIONS**

MEDICAL AID STATIONS	LOCATION	PARAMEDICS	
		YES	NO
Firebird Camp	Firebird Assault Strip	X	
Line EMT's as assigned	Assigned Divisions	X	X
North Pole Base	North Pole Elementary School		X

**6. TRANSPORTATION**

**A. AMBULANCE SERVICES**

NAME	LOCATION	PHONE	PARAMEDICS	
			YES	NO
Eielson AFB	AFB	911 or (907)356-5551	X	
Steese FD Ambulance (Pleasant Valley Area)	Pleasant Valley, AK	911 or (907)450-6507	X	

**B. INCIDENT AMBULANCES**

NAME	LOCATION	PARAMEDICS	
		YES	NO
Ft Wainwright FD Ambulance (ground)	Firebird Spike (907)529-9905	X	

**C. MEDIVAC SERVICES**

NAME	LOCATION	PHONE	Hoist	ALS	BLS
Evergreen Medivac (Type 2 Helicopter)	Ft Greely, Delta Junction, AK	(907)353-9170 (907)356-5551	X	X	
Guardian Flight (Fixed wing)	Fairbanks	(907)356-5551		X	

**7. HOSPITALS**

NAME	ADDRESS	TRAVEL TIME		PHONE	HELIPAD		BURN CTR	
		AIR	GRND		YES	NO	YES	NO
Fairbanks Memorial 64*49.90' x 147*44.50'	1650 Cowles Street, Fairbanks, AK 99701	30 min	90 min	(907)458-5556 (907)353-9170	X			X
Anchorage-Providence Hosp 61*11.62' x 149*49.42'	3200 Providence Dr Anchorage, AK 99504	2 hrs	6 hrs	(907)212-3111	X			X
Harborview Burn Center 47* 36.190 x 122*19.500	325 9th Ave Seattle, WA 98104	4hrs		(206) 284-2876	X		X	

**8. MEDICAL EMERGENCY PROCEDURES**

**LINE MEDICAL EMERGENCY:**

Crew Supervisor to contact Division Supervisor/Operations with patient complaint/condition and location. Division Supervisor/Operations contacts communications:

- Division Supervisor/Operations to use "injury or incident communication protocol" on next page
- Division Supervisor/Operations will run medical emergency on command channel
- Communications contacts MEDL via radio or cell phone and clears command channel for emergency traffic
- Medical Unit Leader will:
  1. Have communications dispatch ground/air transport resources
  2. Develop primary and contingency transport plan
  3. Notify Safety, Logistics, operations and Air ops

**SPIKE CAMP MEDICAL EMERGENCY DAY:**

Notify Communications of camp emergency  
Communications contacts Medical Unit with patient complaint/condition and location.

- Medical Unit contacts:
  - \* Safety, Logistics and operations
- Medical Unit Leader will:
  1. Have communications dispatch ground/air transport resources
  2. Develop primary and contingency transport plan

**SPIKE CAMP MEDICAL EMERGENCY NIGHT:**

Notify Facilities and/or Medical manager at spike camp.  
Medical manager will contact MEDL by cell phone.

- Medical Unit Leader contacts:
  - \* Safety, Logistics and operations
- Medical Unit Leader will:
  1. Dispatch ground/air transport resources
  2. Develop primary and contingency transport plan

<b>206 ICS</b>	9. PREPARED BY: (Medical Unit Leader)	10. REVIEWED BY: (Safety Officer)
	Matthew Lipson MEDL <i>[Signature]</i>	Jennifer Boyd SOFI <i>[Signature]</i>



# Injury or Incident Communications Protocol

DECLARE:            Medical Emergency    or    Non-emergency Medical transport

Best transport method: Ambulance    Helicopter    Vehicle

Location \_\_\_\_\_

Situation \_\_\_\_\_

Any special equipment required \_\_\_\_\_

Number of injured \_\_\_\_\_    Type of injuries \_\_\_\_\_

Closest pick up point (DP, Helispot) \_\_\_\_\_

LOC \_\_\_\_\_    Resp. \_\_\_\_\_    Pulse \_\_\_\_\_    BP \_\_\_\_\_    Weight \_\_\_\_\_

Injury \_\_\_\_\_

Medical History/Allergies \_\_\_\_\_

## Air Transportation Triage

	Ground or Air Ambulance to Hosp.	Transport to Med Unit
<b>Mechanism</b>	Hit by a falling tree or large branch Fall of 10' or more Insect bite with shortness of breath Signs of heat stroke (hot, dry, disoriented) Burn Injury greater than 1% body area	Minor dehydration Cut or laceration with bleeding controlled Minor bites and Stings Minor burns
<b>Area Injured</b>	Significant Blunt or Penetrating Trauma to Head, Neck, Chest, Abdomen or pelvis Any Arm or Leg fracture above the Joint	Minor blunt trauma Minor penetrating trauma Extremity sprains and strains Simple fracture below elbow or knee
<b>Symptoms</b>	Disoriented Chest Pain <u>or</u> Shortness of Breath Weak or absent radial pulse Pale, cold and sweating	Alert and oriented No shortness of breath Good pulses

### Medivac Sites

- H-1: 64\*46.275 X 146\*53.233
- H-2: 64\*40.768 X 146\*48.229
- H-3: 64\*52.552 X 146\*46.660
- H-4: 64\*47.591 X 146\*55.300

### If air or ground ambulance is DELAYED:

Package and transport patient to rendezvous with Ambulance. Re-route EMS helicopter to rendezvous point as appropriate.

### If Declaring an "Incident within the Incident"

The closest DIVS will respond to manage the incident. They are responsible for giving an accurate size up, ensuring scene safety, setting priorities and initiating an appropriate response. The closest Safety Officer and Line EMS will respond to the scene to assist the Branch Director or DIVS. Secure site and begin initial investigation when situation is stabilized.

# STUART CREEK 2



## COMMUNICATION

### **Good Communication Benefits All Parties**

**Communication and Teamwork are keys to managing this or any incident.**

**Effective communication between us requires an understanding and respect of differences and permits us to build positive working relationships.**

**Thanks for providing good communication while on this assignment.**

Michael Donch  
Human Resource Specialist  
Ph-406-570-8755  
Rm 110 at North Pole Elementary School

# Stuart Creek #2 Fire Incident Trainee/Trainer Data Form

**Training Specialist:** Robert Rivelle: Cell - 707.498.1761

- All Incident Trainees, including those on Firefighting Modules: Complete this form and drop off in the box located in the building at Fireball Spike or at the ICP in North Pole, AK. Prior to DEMOB, meet with the Training Specialist to close-out your training package.

## A. Trainee Data

Trainee Name: \_\_\_\_\_ ICS Trainee Position: \_\_\_\_\_

Request # (A,C,E or O): \_\_\_\_--\_\_\_\_ Agency Designator (Example WY-MBF): \_\_\_\_\_

Cell / Contact # While on Incident: \_\_\_\_\_ Home Unit Position: \_\_\_\_\_

Date Assigned: \_\_\_\_\_ Fire Name / Order Number: **Stuart Creek #2 / AK-MID-280**

**Name of the person and location to mail your training package to: (Fire Chief, Training Officer)**

Name: \_\_\_\_\_ Agency: \_\_\_\_\_

Agency Address: \_\_\_\_\_

City: \_\_\_\_\_ State: \_\_\_\_\_ Zip Code: \_\_\_\_\_ Phone: \_\_\_\_\_

## B. Trainee Prerequisites

1. Possesses valid Red Card or agency certification card?  Yes  No
2. Trainee has current position task book issued by home unit?  Yes  No
3. Trainee has "incident issued" task book with concurrence by home unit.  Yes  No

**C. Trainer/Evaluator Data** Trainer / Evaluator Name: \_\_\_\_\_

ICS position on fire: \_\_\_\_\_ Agency: \_\_\_\_\_

Address (optional): \_\_\_\_\_ City: \_\_\_\_\_

State: \_\_\_\_\_ Cell / Contact While on Incident: \_\_\_\_\_

## D. Trainee Goals - (2 tasks or objectives you would like to address).

1. \_\_\_\_\_

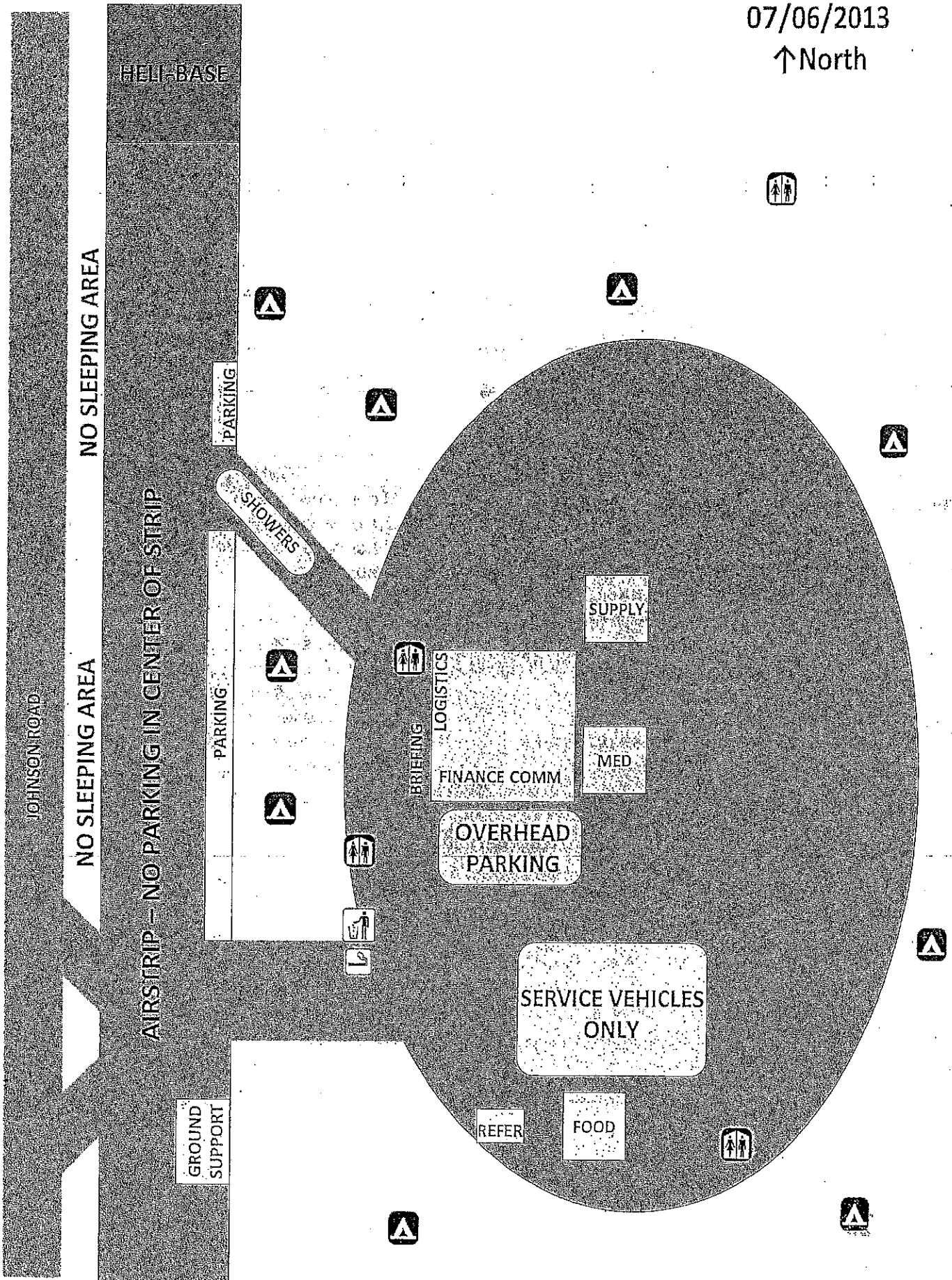
2. \_\_\_\_\_

26

Firebird Spike Camp

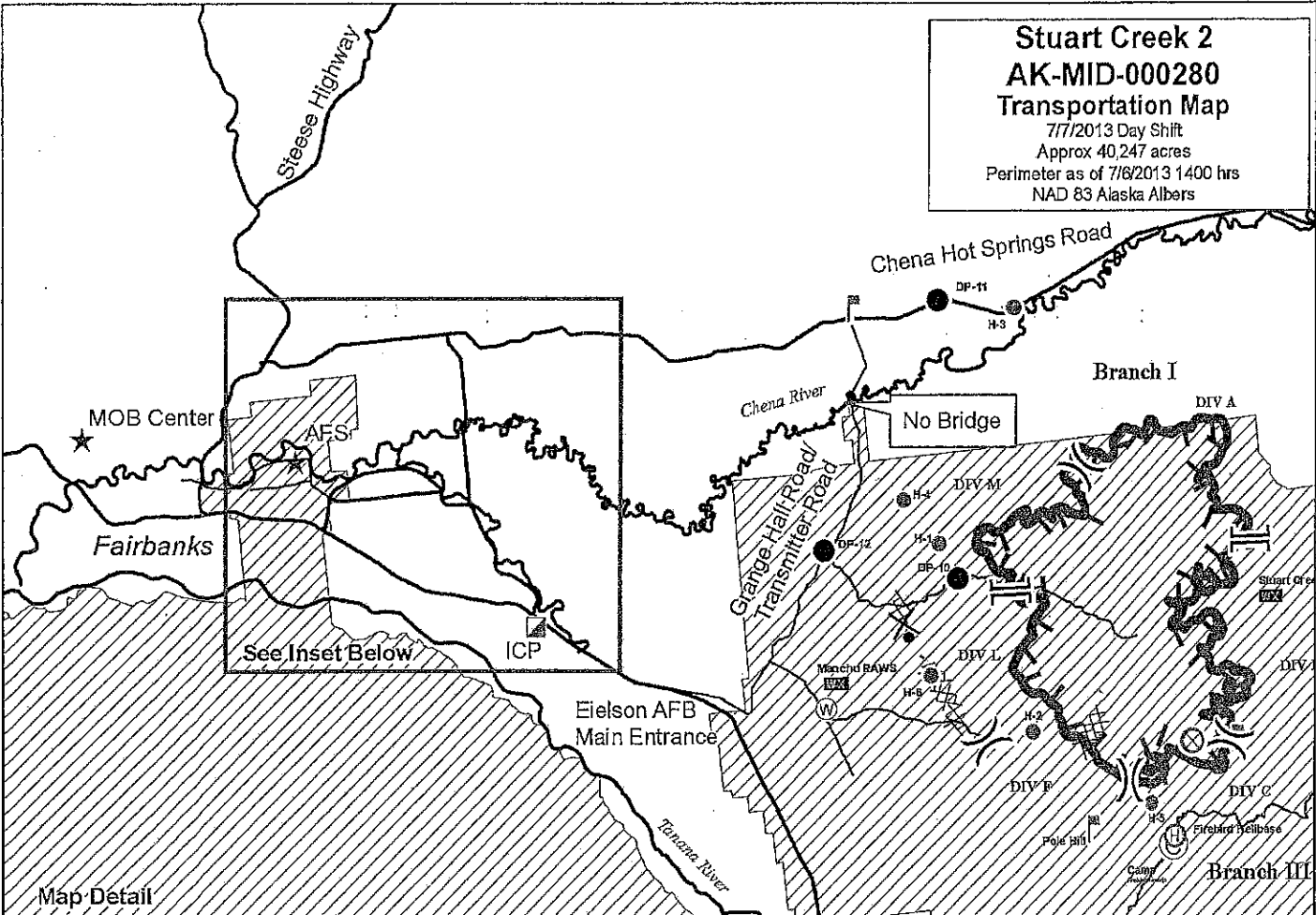
07/06/2013

↑ North

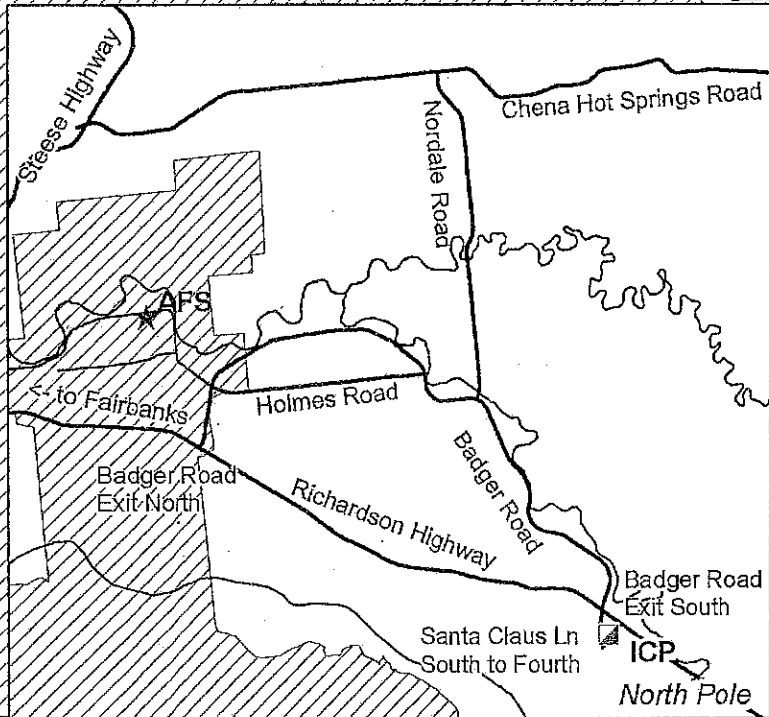


27

**Stuart Creek 2**  
**AK-MID-000280**  
**Transportation Map**  
 7/7/2013 Day Shift  
 Approx 40,247 acres  
 Perimeter as of 7/6/2013 1400 hrs  
 NAD 83 Alaska Albers



Map Detail



- ( ) Division
- || Branch
- (C) Camp
- Drop Point
- ⊗ Fire Origin
- (H) Helibase
- Hotspot
- ⊠ Lookout
- ☒ Mobile Weather Unit
- (W) Water Source
- ⊠ Uncontrolled Fire Edge
- ⊗ Completed Dozer Line
- H Hand Line
- ⊗ Proposed Dozer Line
- ⊠ ICP
- ★ Other POI
- Major Roads
- ~ Secondary/Military Roads
- Major Rivers
- ⊠ State Land
- ⊠ Fort Wellwright

To ICP: Take Badger South/Santa Claus Lane exit and drive south through rotaries to Fourth Avenue. North Pole Elementary School is at corner of Fourth and Snowman.

To Chena Hot Springs Road: Take Badger Road to Nordale, and follow Nordale north to Chena Hot Springs Road.

