

original

STUART CREEK 2 FIRE



AK-MID-280
PDHK8H
(1502)



July 12th, 2013
Day 0800 - 2200

Meeting Schedule

0800 Briefing @ Lion and Firebird Spike
1100 Cooperators Meeting @ North Pole
1800 Planning Meeting @ North Pole

INCIDENT OBJECTIVES	1. Incident Name Stuart Creek 2	2. Date Prepared 7-11-13	3. Time Prepared 2300
----------------------------	---	------------------------------------	---------------------------------

4. Operational Period

7-12-13 0800-2200 hours

5. General Control Objectives for the Incident (include alternatives)

Control Objectives:

Keep Fire:

- North of the Salcha River.
- East of a line along the transmitter road, north to the Chena River and south along the Trans-Alaska Pipeline to the Salcha River.
- West of the south fork Chena River, south along eastern boundary of the Training Area, south to the Salcha River.
- South of the Chena River.

Management Objectives:

- Provide for firefighter and public safety utilizing LCES, 10s / 18s, and risk management from IRPG and required UXO briefings.
- Protect military infrastructure, private residences, cabins, improvements and jurisdictional lands within and adjacent to the fire area.
- Minimize or mitigate threats to known cultural resources by utilizing READs and/or archeologists.
- Avoid application of retardant within 300 feet of stream channels and water ways.
- Coordinate and communicate fire information with the public and all stakeholders.
- Coordinate, develop and implement fire suppression repair.
- Support local unit with initial attack as requested.

6. Weather Forecast for Period

WEATHER: Sunny.
 TEMPERATURES: 72 to 77.
 MIN HUMIDITY: 18 to 24%.
 WINDS (EYE LEVEL): RIDGETOPS: Northeast wind 6 to 12 mph. Gusts to 18 mph in the morning. VALLEYS: Northeast 4 to 8 mph.

7. General Safety Message

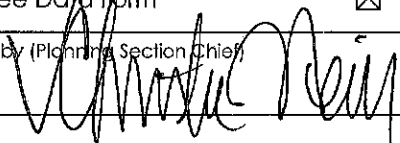
Some roads may still be muddy from recent rains. Be sure to scout them out before committing equipment.

See attached for additional.

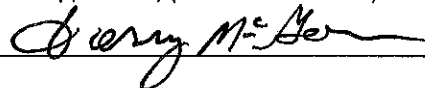
8. Attachments (mark if attached)

- | | | |
|---|---|--|
| <input checked="" type="checkbox"/> Incident Objectives – ICS 202 | <input checked="" type="checkbox"/> Division Assignment List – ICS 204 | <input checked="" type="checkbox"/> Medical Plan – ICS 206 |
| <input checked="" type="checkbox"/> Organization List - ICS 203 | <input checked="" type="checkbox"/> Safety Message | <input checked="" type="checkbox"/> Human Resource Message |
| <input checked="" type="checkbox"/> Fire Weather Forecast | <input checked="" type="checkbox"/> Incident Safety Analysis – ICS 215A | <input checked="" type="checkbox"/> Camp Map |
| <input checked="" type="checkbox"/> Fire Behavior Forecast | <input checked="" type="checkbox"/> Air Ops Summary – ICS 220 | <input checked="" type="checkbox"/> Transportation |
| <input checked="" type="checkbox"/> Trainee Data Form | <input checked="" type="checkbox"/> Communications Plan - ICS 205 | <input checked="" type="checkbox"/> Unit Log – ICS 214 |

9. Prepared by (Planning Section Chief)



10. Approved by (Incident Commander)



ICS Form 203 ORGANIZATION ASSIGNMENT LIST		1. INCIDENT NAME	2. DATE PREPARED	3. TIME PREPARED
		Stuart Creek 2	7-11-13	1800
5. INCIDENT COMMAND STAFF		4. OPERATIONAL PERIOD (DATE/TIME)		
		7-12-13 0800-2200		
6. AGENCY REPRESENTATIVES		9. OPERATIONS SECTION		
Position	Name			
INCIDENT COMMANDER	Jerry McGowan	CHIEF	Steve Parr / Joe Reyes	
DEPUTY		PLANNING OPS	Kathy Kirkpatrick(t)/Bobby Shindelar (t)	
SAFETY OFFICER	Jennifer Boyd / Doug McKelvey (t)	DEPUTY OPS		
INFORMATION OFFICER	Hadley / Phelps / Gibbs (t)	CONTINGENCY OPS		
LIAISON OFFICER	Steve Negro / Dennis Orbus	a. BRANCH I		
HUMAN RESOURCE SPECIALIST	Michael Donch	BRANCH DIR	Linda Szczepanik / John Flores (t)	
		DIVISON	S	Reed Callis
		DIVISON	A	Unstaffed
		DIVISON	M	Jim Snow
		DIVISON	P	Hans Smith / Josh Tumbow (t)
		DIVISON	R	Robert Yeager
		GROUP	Structure	Bob Myers
		b. BRANCH III		
		BRANCH DIRECTOR	Ron Garcia	
		DIVISION	B	Peter Kelley / Jon Holmes (t)
		DIVISION	C	Rick Marinelli / Kevin Labella (t)
		DIVISION	F	Paul Leucsh, Jason Devcich (t)
		DIVISION	L	Bill Steers / Phil OoSahwe (t)
		DIVISION		
		DIVISION		
		DIVISION		
		c. BRANCH -		
		FIREBIRD STG		Kelly Helget
		d. AIR OPERATIONS BRANCH		
		AIR OPERATIONS BR. DIR.	Jason Nava	
		AIR TACTICAL GROUP SUP.	Russ Gripp	
		AIR SUPPORT GROUP SUP	Lisa Cardoza	
		HELICOPTER COORDINATOR		
7. PLANNING SECTION		10. FINANCE/ADMINISTRATION SECTION		
CHIEF	Gary Montgomery	CHIEF	Robbin Ekman	
CHIEF	Christie Neill	CHEIF	Rene White	
RESOURCES UNIT	Fountain / Escalera / Schillinger	TIME UNIT	Glenda Lindsay	
SITUATION UNIT	Tad Morelock / Al Yanagisawa	PERSONAL TIME	Renee Madrid	
STRATEGIC OPS PLANNER	Wayne Cook	COMPENSATION/CLAIMS UNIT	Lisa Dow (t)	
DEMOBILIZATION UNIT	John Roberts	COST UNIT	Christal Rohrbach / Robert Taylor (t)	
CTSP	Jonathan Wilson	EQTR	Sandy Tarvin	
TNSP	Robert Rivelle			
FBAN / LTAN	Patton / St. Clair (t) / Harris (t)			
IMET	Dan Byrd / Christan Cassell (t)			
GISS	Melanie Hans / James Roberts			
READ	Buzby / Rees			
Range Control	(Day) Beck / (Night) Stepp			
8. LOGISTICS SECTION				
CHIEF	Rich Davis			
CHIEF	Jim Hogg			
a. SUPPORT BRANCH				
SECURITY				
SUPPLY UNIT	Jeff Carter			
FACILITIES UNIT	Tim Gardner			
GROUND SUPPORT UNIT	Dave Trussell			
b. SERVICE BRANCH				
COMMUNICATIONS UNIT	Kody Kerwin			
COMMUNICATIONS MANG	Scott LaRue			
FOOD UNIT	Ken Haberl			
RECEIVING	Lori Cayo			
ORDERING	Mike Worford			
MEDICAL UNIT	Matt Lipson			
EQUIPMENT MANAGER	Davis Harsh / Rick Miller			
PREPARED BY (RESOURCES UNIT)				
Jason Schillinger				



Stuart Creek #2 Fire Weather Forecast



FORECAST NO: 7
PREDICTION FOR: Thursday 12 July 2013

NAME OF FIRE: Stuart Creek #2
UNIT: MID

SHIFT DATE: June 11th, 2013

Incident Meteorologist:
Dan Byrd
Christian Cassell (T)

FORECAST ISSUED: 2000 ADT July 11th, 2013

WEATHER DISCUSSION: Temperatures will continue to warm each afternoon and evening through the weekend...reaching into the upper 70s to mid 80s by Saturday and Sunday. Humidity values will fall into the upper teens to mid-20s Friday and Saturday with only minimal to moderate recoveries overnight.

WEATHER FORECAST FRIDAY DAY SHIFT:

WEATHER: Sunny.
TEMPERATURES: 72 to 77.
MIN HUMIDITY: 18 to 24%.
WINDS (EYE LEVEL): RIDGETOPS: Northeast wind 6 to 12 mph. Gusts to 18 mph in the morning.
VALLEYS: Northeast 4 to 8 mph.
CHANCE OF WETTING RAINS: 0%
LAL: 1

WEATHER FORECAST FRIDAY NIGHT:

WEATHER: Clear.
MIN TEMPERATURES: 52 to 60.
MAX HUMIDITY: 35 to 45%.
WINDS (EYE LEVEL): RIDGETOPS: Northeast wind 5 to 10 mph. Gusts to 15 mph. **VALLEYS:** Northeast wind 2 to 5 mph with gusts to 9 mph.
CHANCE OF WETTING RAINS: 0%
LAL: 1

OUTLOOK FOR SATURDAY:

WEATHER: Sunny.
TEMPERATURES: 75 to 83.
MIN HUMIDITY: 18 to 24%.
WINDS (EYE LEVEL): UPSLOPE/UPVALLEY winds 2 to 5 mph. RIDGETOPS: East to southeast wind 4 to 8 mph.
CHANCE OF WETTING RAINS: 0%
LAL: 1

EXTENDED FORECAST FOR SUNDAY through MONDAY: Continued warm but with enough instability and moisture aloft to possibly generate some thunderstorms late Sunday that could extend through the overnight. Similar conditions are possible for Monday.

Sunrise Friday: 0342 ADT Sunset Friday: 0008 ADT
Thursday Observation summary at Stuart Creek RAWs (midnight through 1800):

Max T: 62
Min RH: 64
Max Wind: NNW 08g13 mph
Rain Accumulation (0000 – 2000): 0.00 inches

FIRE BEHAVIOR FORECAST

FORECAST NUMBER: # 10	TYPE OF FIRE: Wildfire
FIRE NAME: Stuart Creek #2	OPERATIONAL PERIOD: Day – July 12, 2013
DATE ISSUED: 07/11/13	TIME ISSUED: 2000 hrs
UNIT: BLM-AFS	SIGNED: Tom St. Clair FBAN(T)

WEATHER SUMMARY:

Temperature: 72-77 degrees Minimum RH: 18-24% Winds(Eye-Level): RIDGETOPS: Northeast wind 6 to 12 mph. VALLEYS: Northeast 4 to 8 mph. Gusts 15 to 20 mph in the morning..

See attached Fire Weather Forecast for more details.

Take weather observations, and call in hourly to Communications. Please include location and elevation.

FIRE BEHAVIOR

GENERAL:

Warming and drying trend continues.

Divisions M, L, and F: Received less rainfall are drying out first. Group and single tree torching will occur where heat is allowed to build under spruce canopies. Look for smoldering fire to increase into flaming in dozer berms, squirrel caches, jackstrawed timber, deep duff, and other areas sheltered from moisture. Some spot fires are likely especially in areas where unburned fuels are close to the line, but they are unlikely to grow quickly enough to become established before suppression resources respond.

Divisions S,R,P,A,B and C: In General the North and East portions of the fire perimeter received the major amount of precipitation earlier in the week. These areas will be a day or two slower to dry out. Torching is possible but spot fires are unlikely to occur.

Today is a second drying and warming day. Look for the trend to continue through the shift with minimal RH recovery tonight.

FUELS:

Manchu RAWS Predicted Fire Weather Indices FFMC 88.1, DMC 51.7, DC 335.6, ISI 8.5, BUI 74.6, FWI 24.4

Pure Black Spruce worst case scenario:

FL Head: Up to 9'

ROS Head: Up to 27 ch/hr

Majority of the fuels around the fire and within

Spruce/Hardwood mix worst case scenario:

FL Head: Up to 3'

ROS Head: Up to 9 ch/hr

Spotting distance: .25 miles

Probability of ignition: 21%

AIR OPERATIONS:

Watch for gusty winds in the morning.

SAFETY

Look at the first three standard firefighting orders and apply them to your situation. Are you informed of fire weather conditions and forecasts? So you know what your fire is doing at all times? Are your actions based on current and expected fire behavior?

Division Assignment List		1. Branch I	2. Division/Group Structure Protection
---------------------------------	--	-----------------------	--

3. Incident Name MID Stuart Creek 2	4. Operational Period 07/12/13 Friday DAY Shift 0800 - 2200
--	--

5. Operations Personnel

Operations Chief	STEVE PARR / JOE REYES	Group Supervisor	BOB MYERS
Operations Chief	KIRKPATRICK (t) / SHINDELAR (t)	Air Attack Supervisor	RUSSELL GRIPP
Branch Director	SZCZEPANIK / FLORES (t)	Safety Officer	JENNIFER BOYD / D. MCKELVEY (t)

6. Resources Assigned This Period

Strike Team/Task Force/ Resource Designator	Leader	Num of Pers.	Trans. Y/N	Drop Off PT./Time	Pick Up PT./Time
STUART TASK FORCE 1	MITCH LINEBARGER	12	N	LION PARK 0800	LION PARK 2200
STUART TASK FORCE 2	BRIAN CARVER	12	N	LION PARK 0800	LION PARK 2200
PALMER TASK FORCE	JACOB BOOTHBY	13	N	LION PARK 0800	LION PARK 2200
SOFR	RICH SONSTENG	1	N	LION PARK 0800	LION PARK 2200

7. Control Operations
 Remove all fire equipment around structures starting at Two Rivers moving to the east toward Pleasant Valley. Leave fire equipment at structures closest to Chena River. Remove all flagging, cardboard etc. Bring all equipment to Lion Spike to be sorted and returned to agencies.

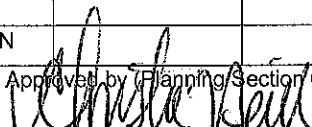
8. Special Instructions
 ALL LINE ORDERS WILL BE ORDERED THROUGH 'FIREBIRD SPIKE'

When observable ordnance are encountered, leave them intact, **DO NOT TOUCH**, contact DIVS and Range Control. When observable cultural resources are encountered, leave them intact and document location. Notify READ. Only aviation resources will be used within impact areas, except on hardened roads coordinated with military Explosive Ordnance Disposal (EOD) range control personnel. 1 mile buffer added to limited entry area.

9. Division/Group Communications Summary

Function	Frequency - RX	Frequency - TX	Tone	System	Channel	System	Channel
Command	170.0125N	165.2500N	123.0	NIFC	3		
Tactical	159.3750N	159.3750N		NIFC	11		
Logistics							
Air to Ground	169.1500N	169.1500N		NIFC	12		

Prepared by (Resource Unit Leader) **MELODY FOUNTAIN**

Approved by (Planning Section Chief) 

Date Prepared **07/11/13**

Time Prepared **2000**

Division Assignment List	1. Branch I	2. Division/Group M
---------------------------------	-----------------------	-------------------------------

3. Incident Name MID Stuart Creek 2	4. Operational Period 07/12/13 Friday DAY Shift 0800 - 2200
---	---

5. Operations Personnel

Operations Chief	STEVE PARR / JOE REYES	Division/Group	JAMES SNOW
Operations Chief	KIRKPATRICK (t) / SHINDELAR (t)	Air Attack Supervisor	RUSSELL GRIPP
Branch Director	SZCZEPANIK / FLORES (t)	Safety Officer	JENNIFER BOYD / D, MCKELVEY (t)

6. Resources Assigned this Period

Strike Team/Task Force/ Resource Designator	Leader	Num of Pers.	Trans. Y/N	Drop Off PT./Time	Pick Up PT./Time
CREW T1 MIDNIGHT SUN IHC 7/18	JACOB B LIVINGSTON	19	N	FB SPIKE 0800	FB SPIKE 2200
CREW T1 WOLF CREEK 7/13	ERIC MILLER	20	N	FB SPIKE 0800	FB SPIKE 2200
CREW T2IA MCKENZIE RIVER 7/16	NICHOLAS BEDDOW	20	N	FB SPIKE 0800	FB SPIKE 2200
CREW T2IA CENTRAL OREGON 7/16	ROD SAMS	20	N	FB SPIKE 0800	FB SPIKE 2200
CREW T2 RUBY 7/15	ALLEN TITUS	17	N	FB SPIKE 0800	FB SPIKE 2200
CREW T2IA MHR # 1 7/20	PAUL SMITH	20	N	FB SPIKE 0800	FB SPIKE 2200
W/T 85 EIELSON AFB		1	N	FB SPIKE 0800	FB SPIKE 2200
W/T CHIPS 1 E-18	ZACK STOCKTON	1	N	FB SPIKE 0800	FB SPIKE 2200
DOZER STONE BOY E-294	SEIBOLD/ FORTUNE	2	N	FB SPIKE 0800	FB SPIKE 2200
DOZER HOWARD E-26	HOWARD/ BORASH	2	N	FB SPIKE 0800	FB SPIKE 2200
DOZER KLP EQUIPMENT E-267	GARRY PFALMER	1	N	FB SPIKE 0800	FB SPIKE 2200
DOZ BLACK GOLD E-207 7/20	ROBERT PACKER	1	N	FB SPIKE 0800	FB SPIKE 2200
SKIDGINE - SOFT TRACK E- 61 7/16	JOSH COVEY	1	N	FB SPIKE 0800	FB SPIKE 2200
SKIDGINE - SOFT TRACK E-297 7/16	CALEB COVEY	1	N	FB SPIKE 0800	FB SPIKE 2200
TFLD	CORY FLESHER	1	N	FB SPIKE 0800	FB SPIKE 2200
TFLD	ENO-HENDREN (t)	1	N	FB SPIKE 0800	FB SPIKE 2200
HEQB	JAIME SARABIA	1	N	FB SPIKE 0800	FB SPIKE 2200
HEQB	WERNER KREGOR	1	N	FB SPIKE 0800	FB SPIKE 2200
HEQB	MARCEL POTVIN (t)	1	N	FB SPIKE 0800	FB SPIKE 2200
HEQB	ADAM DEALAMAN (t)	1	N	FB SPIKE 0800	FB SPIKE 2200

7. Control Operations
Construct dozer and hand line as direct as possible from Branch break at DP 13 on Beaver Creek Rd north to Division M/P break to keep fire from spreading west towards DET 460. Mop up heat along completed fire line to 100 feet.

8. Special Instructions
ALL LINE ORDERS WILL BE ORDERED THROUGH 'FIREBIRD SPIKE'
When observable ordnance are encountered, leave them intact, **DO NOT TOUCH**, contact DIVS and Range Control.
When observable cultural resources are encountered, leave them intact and document location. Notify READ.
Only aviation resources will be used within impact areas, except on hardened roads coordinated with military Explosive Ordnance Disposal (EOD) range control personnel. 1 mile buffer added to limited entry area.
Note location of damaged electrical infrastructure and notify DIVS.

9. Division/Group Communications Summary

Function	Frequency - RX	Frequency - TX	Tone	System	Channel	System	Channel
Command	170.0125N	165.2500N	123.0	NIFC	3		
Tactical Div/Group	168.2500N	168.2500N		NIFC	7		
Logistics							
Air to Ground	169.1500N	169.1500N		NIFC	12		

Prepared by (Resource Unit Leader) MELODY FOUNTAIN	Approved by (Planning Section Chief) <i>[Signature]</i>	Date Prepared 07/11/13	Time Prepared 2000
--	--	----------------------------------	------------------------------

Division Assignment List		1. Branch I	2. Division/Group M
---------------------------------	--	-----------------------	-------------------------------

3. Incident Name MID Stuart Creek 2	4. Operational Period 07/12/13 Friday DAY Shift 0800 - 2200
--	--

5. Operations Personnel

Operations Chief	STEVE PARR / JOE REYES	Division/Group Supervisor	JAMES SNOW
Operations Chief	KIRKPATRICK (t) / SHINDELAR (t)	Air Attack Supervisor	RUSSELL GRIPP
Branch Director	SZCZEPANIK / FLORES (t)	Safety Officer	JENNIFER BOYD / D, MCKELVEY (t)

6. Resources Assigned this Period

Strike Team/Task Force/ Resource Designator	Leader	Num of Pers.	Trans. Y/N	Drop Off PT./Time	Pick Up PT./Time
FOBS	LEW BECKER	1	N	FB SPIKE 0800	FB SPIKE 2200
FOBS	DAVID LATTIMORE	1	N	FB SPIKE 0800	FB SPIKE 2200
SOFR	CARY BROWN	1	N	FB SPIKE 0800	FB SPIKE 2200
SOFR	DON GARRINGER	1	N	FB SPIKE 0800	FB SPIKE 2200
EMT (IMSA)	MILLIE CARSON	1	N	FB SPIKE 0800	FB SPIKE 2200
EMTF	PATRICK TOLAND	1	N	FB SPIKE 0800	FB SPIKE 2200

7. Control Operations
Construct dozer and hand line as direct as possible from Branch break at DP 13 on Beaver Creek Rd north to Division M/P break to keep fire from spreading west towards DET 460. Mop up heat along completed fire line to 100 feet.

8. Special Instructions
ALL LINE ORDERS WILL BE ORDERED THROUGH 'FIREBIRD SPIKE'
When observable ordnance are encountered, leave them intact, DO NOT TOUCH, contact DIVS and Range Control.
When observable cultural resources are encountered, leave them intact and document location. Notify READ.
Only aviation resources will be used within impact areas, except on hardened roads coordinated with military Explosive Ordnance Disposal (EOD) range control personnel. 1 mile buffer added to limited entry area.
Note location of damaged electrical infrastructure and notify DIVS.

9. Division/Group Communications Summary

Function	Frequency - RX	Frequency - TX	Tone	System	Channel	System	Channel
Command	170.0125N	165.2500N	123.0	NIFC	3		
Tactical Div/Group	168.2500N	168.2500N		NIFC	7		
Logistics							
Air to Ground	169.1500N	169.1500N		NIFC	12		

Prepared by (Resource Unit Leader)	Approved by (Planning Section Chief) <i>[Signature]</i>	Date Prepared 07/11/13	Time Prepared 2000
------------------------------------	--	---------------------------	-----------------------

7

Division Assignment List	1. Branch I	2. Division/Group P
---------------------------------	-----------------------	-------------------------------

3. Incident Name MID Stuart Creek 2	4. Operational Period 07/12/13 Friday DAY Shift 0800 - 2200
--	--

5. Operations Personnel			
Operations Chief	STEVE PARR / JOE REYES	Division/Group	HANS SMITH, JOSH TURNBOW (t)
Operations Chief	KIRKPATRICK (t) / SHINDELAR (t)	Air Attack Supervisor	RUSSELL GRIPP
Branch Director	SZCZEPANIK / FLORES (t)	Safety Officer	JENNIFER BOYD / D. MCKELVEY (t)

6. Resources Assigned this Period						
Strike Team/Task Force/ Resource Designator	Leader	Num of Pers.	Trans. Y/N	Drop Off PT./Time	Pick Up PT./Time	
CREW T1 MENDOCINO 7/10	NICK BUNCH	20	N	PAPA SPIKE 0800	PAPA SPIKE 2200	
CREW T1 CHENA IHC 7/23	CHRIS MARABETTA	21	N	PAPA SPIKE 0800	PAPA SPIKE 2200	
CREW - T2IA - MOF #2 7/20	WILLIAM COBER	20	N	LION SPIKE 0800	LION SPIKE 2200	
CREW - T2IA - MDS #1 7/20	BRIAN STUPAK	20	N	LION SPIKE 0800	LION SPIKE 2200	
CREW - T2IA - DES #1 7/20	ERICH BURKENTINE	20	N	LION SPIKE 0800	LION SPIKE 2200	
STLC	ANTHONY CHAPMAN	1	N	LION SPIKE 0800	LION SPIKE 2200	
STLC (t)	ISSAC SOLOMON	1	N	LION SPIKE 0800	LION SPIKE 2200	
STLC (t)	NICK ADAMSON	1	N	LION SPIKE 0800	LION SPIKE 2200	
SOFR	JAYSON SMITH	1	N	LION SPIKE 0800	LION SPIKE 2200	
EMT	PHIL GROSSARTH	1	N	LION SPIKE 0800	LION SPIKE 2200	
EMTP	TERRY STEVENSON	1	N	LION SPIKE 0800	LION SPIKE 2200	
FOBS	KAY KUDO	1	N	LION SPIKE 0800	LION SPIKE 2200	
FOBS	JOEL SATHER	1	N	LION SPIKE 0800	LION SPIKE 2200	
FOBS	TIM EPP	1	N	LION SPIKE 0800	LION SPIKE 2200	
FOBS	COLLINS BONDS	1	N	LION SPIKE 0800	LION SPIKE 2200	

7. Control Operations
Continue direct hand line south. Cut trees along the line to 10 foot wide. Lay hose supported with pumps in conjunction with tree removal. Mop up all heat up to 100 feet from P/R division break south of the Chena River to Warner Creek.

8. Special Instructions
ALL LINE ORDERS WILL BE ORDERED THROUGH 'FIREBIRD SPIKE'
When observable ordnance are encountered, leave them intact, DO NOT TOUCH, contact DIVS and Range Control.
When observable cultural resources are encountered, leave them intact and document location. Notify READ.
Only aviation resources will be used within impact areas, except on hardened roads coordinated with military Explosive Ordnance Disposal (EOD) range control personnel. 1 mile buffer added to limited entry area.

9. Division/Group Communications Summary							
Function	Frequency - RX	Frequency - TX	Tone	System	Channel	System	Channel
Command	170.0125N	165.2500N	123.0	NIFC	3		
Tactical Div/Group	166.7750N	166.7750N		NIFC	10		
Logistics							
Air to Ground	169.1500N	169.1500N		NIFC	12		

Prepared by (Resource Unit Leader) MELODY FOUNTAIN	Approved by (Planning Section Chief) <i>[Signature]</i>	Date Prepared 07/11/13	Time Prepared 2000
---	--	---------------------------	-----------------------

8

Division Assignment List	1. Branch I	2. Division/Group R
---------------------------------	-----------------------	-------------------------------

3. Incident Name MID Stuart Creek 2	4. Operational Period 07/12/13 Friday DAY Shift 0800 - 2200
--	--

5. Operations Personnel			
Operations Chief	STEVE PARR / JOE REYES	Division/Group Supervisor	ROBERT YEAGER
Operations Chief	KIRKPATRICK (t) / SHINDELAR (t)	Air Attack Supervisor	RUSSELL GRIPP
Branch Director	SZCZEPANIK / FLORES (t)	Safety Officer	JENNIFER BOYD / D. MCKELVEY (t)

6. Resources Assigned this Period					
Strike Team/Task Force/ Resource Designator	Leader	Num of Pers.	Trans. Y/N	Drop Off PT./Time	Pick Up PT./Time
JUMPER BOAT E-38	ROBERT YEAGER	1	N	LION SPIKE 0800	LION SPIKE 2200
ZODIAK 6	BRIAN KIRKMAN	1	N	LION SPIKE 0800	LION SPIKE 2200
ZODIAK 7	JOHN DIBERT	1	N	LION SPIKE 0800	LION SPIKE 2200

7. Control Operations
 Provide boat transportation for fire resources crossing the Chena River for access to Divisions P, R and S. Establish and implement River crossing safety protocol. Ensure clean water practices are in place to protect river water quality and natural resources.
 Monitor fire spread.

8. Special Instructions
ALL LINE ORDERS WILL BE ORDERED THROUGH 'FIREBIRD SPIKE'

When observable ordnance are encountered, leave them intact, DO NOT TOUCH, contact DIVS and Range Control. When observable cultural resources are encountered, leave them intact and document location. Notify READ.
 Only aviation resources will be used within impact areas, except on hardened roads coordinated with military Explosive Ordnance Disposal (EOD) range control personnel. 1 mile buffer added to limited entry area.

9. Division/Group Communications Summary							
Function	Frequency - RX	Frequency - TX	Tone	System	Channel	System	Channel
Command	170.0125N	165.2500N	123.0	NIFC	3		
Tactical Div/Group	168.2000N	168.2000N		NIFC	5		
Logistics							
Air to Ground	169.1500N	169.1500N		NIFC	12		

Prepared by (Resource Unit Leader) MELODY FOUNTAIN	Approved by (Planning Section Chief) 	Date Prepared 07/11/13	Time Prepared 2000
---	---	---------------------------	-----------------------

Division Assignment List	1. Branch I	2. Division/Group S

3. Incident Name MID Stuart Creek 2	4. Operational Period 07/12/13 Friday DAY Shift 0800 - 2200
--	--

5. Operations Personnel

Operations Chief	STEVE PARR / JOE REYES	Division/Group	REED J CALLIS
Operations Chief	KIRKPATRICK (t) / SHINDELAR (t)	Air Attack Supervisor	RUSSELL GRIPP
Branch Director	SZCZEPANIK / FLORES (t)	Safety Officer	JENNIFER BOYD / D. MCKELVEY (t)

6. Resources Assigned This Period

Strike Team/Task Force/ Resource Designator	Leader	Num of Pers.	Trans. Y/N	Drop Off PT./Time	Pick Up PT./Time
WHISKEYTOWN WFM	ERIC NEISWANGER	8	N	LION SPIKE 0800	LION SPIKE 2200
CREW T2IA MOF # 1 7/20	SEAN FLANAGAN	20	N	LION SPIKE 0800	LION SPIKE 2200
EMTF	CARMELLA BAUMAN	1	N	LION SPIKE 0800	LION SPIKE 2200
EMTF	DAVID MOLTER	1	N	LION SPIKE 0800	LION SPIKE 2200
SOFR	JOE PASTORE	1	N	LION SPIKE 0800	LION SPIKE 2200

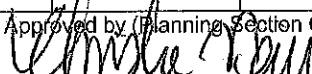
7. Control Operations
Mop up all areas within 100 feet of completed fire line at the R/S division break to prevent fire spread to the east.

8. Special Instructions
ALL LINE ORDERS WILL BE ORDERED THROUGH 'FIREBIRD SPIKE'

When observable ordnance are encountered, leave them intact, DO NOT TOUCH, contact DIVS and Range Control.
When observable cultural resources are encountered, leave them intact and document location. Notify READ.
Only aviation resources will be used within impact areas, except on hardened roads coordinated with military Explosive Ordnance Disposal (EOD) range control personnel. 1 mile buffer added to limited entry area.

9. Division/Group Communications Summary

Function	Frequency - RX	Frequency - TX	Tone	System	Channel	System	Channel
Command	170.0125N	165.2500N	123.0	NIFC	3		
Tactical	168.0500N	168.0500N		NIFC	4		
Logistics							
Air to Ground	169.1500N	169.1500N		NIFC	12		

Prepared by (Resource Unit Leader) MELODY FOUNTAIN	Approved by (Planning Section Chief) 	Date Prepared 07/11/13	Time Prepared 2000
---	---	---------------------------	-----------------------

Division Assignment List	1. Branch I	2. Division/Group A
---------------------------------	-----------------------	-------------------------------

3. Incident Name MID Stuart Creek 2	4. Operational Period 07/12/13 Friday DAY Shift 0800 - 2200
--	--

5. Operations Personnel			
Operations Chief	STEVE PARR / JOE REYES	Division/Group	
Operations Chief	KIRKPATRICK (t) / SHINDELAR (t)	Air Attack Supervisor	RUSSELL GRIPP
Branch Director	SZCZEPANIK / FLORES (t)	Safety Officer	JENNIFER BOYD / D. MCKELVEY (t)

6. Resources Assigned This Period					
Strike Team/Task Force/ Resource Designator	Leader	Num of Pers.	Trans. Y/N	Drop Off PT./Time	Pick Up PT./Time
UNSTAFFED					

7. Control Operations
PATROL BY AIR

8. Special Instructions
 ALL LINE ORDERS WILL BE ORDERED THROUGH 'FIREBIRD SPIKE'
 When observable ordnance are encountered, leave them intact, **DO NOT TOUCH**, contact DIVS and Range Control.
 When observable cultural resources are encountered, leave them intact and document location. Notify READ.
 Only aviation resources will be used within impact areas, except on hardened roads coordinated with military Explosive Ordnance Disposal (EOD) range control personnel. 1 mile buffer added to limited entry area.

9. Division/Group Communications Summary							
Function	Frequency - RX	Frequency - TX	Tone	System	Channel	System	Channel
Command	170.0125N	165.2500N	123.0	NIFC	3		
Tactical	168.0500N	168.0500N		NIFC	4		
Logistics							
Air to Ground	169.1500N	169.1500N		NIFC	12		

Prepared by (Resource Unit Leader) MELODY FOUNTAIN	Approved by (Planning Section Chief) 	Date Prepared 07/11/13	Time Prepared 2000
---	--	---------------------------	-----------------------

Division Assignment List	1. Branch III	2. Division/Group C
---------------------------------	-------------------------	-------------------------------

3. Incident Name MID Stuart Creek 2	4. Operational Period 07/12/13 Friday DAY Shift 0800 - 2200
--	--

5. Operations Personnel

Operations Chief	STEVE PARR / JOE REYES	Division/Group	RICK MARINELLI / KEVIN LABELLA (t)
Operations Chief	KIRKPATRICK (t) / SHINDELAR (t)	Air Attack Supervisor	RUSSELL GRIPP
Branch Director	RON GARCIA	Safety Officer	JENNIFER BOYD / D. MCKELVEY (t)

6. Resources Assigned This Period


Strike Team/Task Force/ Resource Designator	Leader	Num of Pers.	Trans. Y/N	Drop Off PT./Time	Pck Up PT./Time
ENG C-61 E-240	JIM MILLER	4	N	FB SPIKE 0800	FB SPIKE 0800
SOFR	GAYLE SITTER	1	N	FB SPIKE 0800	FB SPIKE 0800

7. Control Operations
 Hold fire north of Brigadier Rd from B/C division break to C/F division break at junction of Quarry and Brigadier Roads. Patrol south side of Brigadier Rd for spot fires.

8. Special Instructions
 ALL LINE ORDERS WILL BE ORDERED THROUGH 'FIREBIRD SPIKE'
 When observable ordnance are encountered, leave them intact, **DO NOT TOUCH**, contact DIVS and Range Control.
 When observable cultural resources are encountered, leave them intact and document location. Notify READ.
 Only aviation resources will be used within impact areas, except on hardened roads coordinated with military Explosive Ordnance Disposal (EOD) range control personnel. 1 mile buffer added to limited entry area.
 Note location of damaged electrical infrastructure and notify DIVS.

9. Division/Group Communications Summary

Function	Frequency - RX	Frequency - TX	Tone	System	Channel	System	Channel
Command	168.1000N	170.4500N	123.0	NIFC	1		
Tactical	168.2500N	168.2500N		NIFC	7		
Logistics							
Air to Ground	169.1500N	169.1500N		NIFC	12		

Prepared by (Resource Unit Leader) MELODY FOUNTAIN	Approved by (Planning Section Chief) 	Date Prepared 07/11/13	Time Prepared 2000
---	---	---------------------------	-----------------------

Division Assignment List	1. Branch III	2. Division/Group F
---------------------------------	-------------------------	-------------------------------

3. Incident Name MID Stuart Creek 2	4. Operational Period 07/12/13 Friday DAY Shift 0800 - 2200
--	--

5. Operations Personnel

Operations Chief	STEVE PARR / JOE REYES	Division/Group	PAUL LEUSCH / JASON DEVCICH (t)
Operations Chief	KIRKPATRICK (t) / SHINDELAR (t)	Air Attack Supervisor	RUSSELL GRIPP
Branch Director	RON GARCIA	Safety Officer	JENNIFER BOYD / D. MCKELVEY (t)

6. Resources Assigned this Period

Strike Team/Task Force/ Resource Designator	Leader	Num of Pers.	Trans. Y/N	Drop Off PT./Time	Pick Up PT./Time
CREW T2 UPPER KALSKAG 7/18	JEFF KERR	16	N	FB SPIKE 0800	FB SPIKE 2200
CREW T2 ST. MARY'S 7/18	LARRY OLIN	16	N	FB SPIKE 0800	FB SPIKE 2200
ENG 20 FORT GREELEY	PLUMBLY	2	N	FB SPIKE 0800	FB SPIKE 2200
WT MIDSTATE T2 7/15	BRIAN ARMSTRONG	1	N	FB SPIKE 0800	FB SPIKE 2200
WT GOLDSTREAM T2 7/11	DAVE HYLAND	1	N	FB SPIKE 0800	FB SPIKE 2200
WT T2 BLACK GOLD E-226	LONNIE COPELAND	1	N	FB SPIKE 0800	FB SPIKE 2200
EXCAVATOR E-309		1	N	FB SPIKE 0800	FB SPIKE 2200
SKIDG FAIRBANKS CONST E-62 7/16	RICHARD BIENVENUE	1	N	FB SPIKE 0800	FB SPIKE 2200
SKIDG FAIRBANKS CONST E-63 7/15	RUSSEL CAMP	1	N	FB SPIKE 0800	FB SPIKE 2200
TFLD	KEMERY	1	N	FB SPIKE 0800	FB SPIKE 2200
TFLD	HARVEY	1	N	FB SPIKE 0800	FB SPIKE 2200
TFLD (t)	FARINHOLT	1	N	FB SPIKE 0800	FB SPIKE 2200
TFLD (t)	DONAVON MAUPIN	1	N	FB SPIKE 0800	FB SPIKE 2200
EMT (IMS-M/T)	GREG / POXLEITNER	2	N	FB SPIKE 0800	FB SPIKE 2200
SOFR	TOM DAER	1	N	FB SPIKE 0800	FB SPIKE 2200

7. Control Operations
 Hold fire north of Quarry Rd from C/F division break to F/L division break at Quarry/Manchu Rd. Mop up spot fires on south side of Quarry Rd. Patrol for spot fires across Quarry Rd. Mop up fire line to 100 feet.

8. Special Instructions
 ALL LINE ORDERS WILL BE ORDERED THROUGH 'FIREBIRD SPIKE'
 When observable ordnance are encountered, leave them intact, **DO NOT TOUCH**, contact DIVS and Range Control.
 When observable cultural resources are encountered, leave them intact and document location. Notify READ.
 Only aviation resources will be used within impact areas, except on hardened roads coordinated with military Explosive Ordnance Disposal (EOD) range control personnel. 1 mile buffer added to limited entry area.
 Note location of damaged electrical infrastructure and notify DIVS. -FT WAINWRIGHT AMULANCE WILL BE @ DP30-

9. Division/Group Communications Summary

Function	Frequency - RX	Frequency - TX	Tone	System	Channel	System	Channel
Command	168.1000N	170.4500N	123.0	NIFC	1		
Tactical	168.0500N	168.0500N		NIFC	4		
Logistics							
Air to Ground	169.1500N	169.1500N		NIFC	12		

Prepared by (Resource Unit Leader) MELODY FOUNTAIN	Approved by (Planning Section Chief) <i>[Signature]</i>	Date Prepared 07/11/13	Time Prepared 1904
---	--	---------------------------	-----------------------

Division Assignment List		1. Branch III	2. Division/Group L		
3. Incident Name MID Stuart Creek 2		4. Operational Period 07/12/13 Friday DAY Shift 0800 - 2200			
5. Operations Personnel					
Operations Chief	STEVE PARR / JOE REYES	Division/Group	BILL STEERS / PHIL OOSHAW (t)		
Operations Chief	KIRKPATRICK (t) / SHINDELAR (t)	Air Attack Supervisor	RUSSELL GRIPP		
Branch Director	RON GARCIA	Safety Officer	JENNIFER BOYD / D. MCKELVEY (t)		
6. Resources Assigned this Period					
Strike Team/Task Force/ Resource Designator	Leader	Num of Pers.	Trans. Y/N	Drop Off PT./Time	Pick Up PT./Time
CREW T1 ZIGZAG IHC 7/13	JOEL POMEROY	20	N	LIMA SPIKE 0800	LIMA SPIKE 2200
CREW T1 ROGUE RIVER IHC 7/13	AARON SCHUH	20	N	LIMA SPIKE 0800	LIMA SPIKE 2200
CREW T1 REDDING IHC 7/17	DAN MILLIA	20	N	LIMA SPIKE 0800	LIMA SPIKE 2200
CREW T2IA GANNETT GLACIER 7/14	JOSHUA LEUTZINGER	20	N	FB SPIKE 0800	FB SPIKE 2200
CREW T2IA SANTIAM RIVER 7/16	JONATHAN BLACKBURN	19	N	FB SPIKE 0800	FB SPIKE 2200
CREW T2IA PAS#1 7/21	JOHN HECKER	20	N	FB SPIKE 0800	FB SPIKE 2200
CREW T2IA PAS#2 7/20	DAVID E FELIX	20	N	FB SPIKE 0800	FB SPIKE 2200
CREW T2IA GMF#1 7/20	DAVID DISANTO	20	N	FB SPIKE 0800	FB SPIKE 2200
CREW T2IA UMPQUA 6 7/16	RICHARD F TINGLE	20	N	FB SPIKE 0800	FB SPIKE 2200
CREW T2 KOYUKUK 7/20	JASON MALAMUTE	15	N	FB SPIKE 0800	FB SPIKE 2200
DOZER EISBERRY E-266	WADE HAURY	1	N	FB SPIKE 0800	FB SPIKE 2200
DOZER REMOTE 1 E-205 7/2	TIM KNIGHT	1	N	FB SPIKE 0800	FB SPIKE 2200
TFLD	RYAN CUMBOW	1	N	FB SPIKE 0800	FB SPIKE 2200
TFLD	JENNIFER HARRIS	1	N	FB SPIKE 0800	FB SPIKE 2200
FOBS	NIC ELMQUIST	1	N	FB SPIKE 0800	FB SPIKE 2200
FOBS (t)	NATE BARTELS	1	N	FB SPIKE 0800	FB SPIKE 2200
EMT (IMS-M)	DOUGLAS GREG	1	N	FB SPIKE 0800	FB SPIKE 2200
EMT (IMS-T)	DAVID POXLEITNER	1	N	FB SPIKE 0800	FB SPIKE 2200
SOFR	TOM PLYMALE	1	N	FB SPIKE 0800	FB SPIKE 2200

7. Control Operations
 Hold fire east of dozer and hand line from L/F division break through Moose Creek to DP 13 on Beaver Creek Rd. Construct line as direct as needed to prevent fire from progressing to west toward Manchu Range. Mop up fire line to 50 feet.

8. Special Instructions
 ALL LINE ORDERS WILL BE ORDERED THROUGH 'FIREBIRD SPIKE'
 When observable ordnance are encountered, leave them intact, **DO NOT TOUCH**, contact DIVS and Range Control.
 When observable cultural resources are encountered, leave them intact and document location. Notify READ.
 Only aviation resources will be used within impact areas, except on hardened roads coordinated with military Explosive Ordnance Disposal (EOD) range control personnel. 1 mile buffer added to limited entry area.
 Note location of damaged electrical infrastructure and notify DIVS. -FT WAINWRIGHT AMULANCE WILL BE @ DP30-

9. Division/Group Communications Summary							
Function	Frequency - RX	Frequency - TX	Tone	System	Channel	System	Channel
Command	170.1000N	162.1625N		NIFC	2		
Tactical	166.7250N	166.7250N		NIFC	6		
Logistics							
Air to Ground	169.1500N	169.1500N		NIFC	12		
Prepared by (Resource Unit Leader) MELODY FOUNTAIN			Approved by (Planning Section Chief) <i>[Signature]</i>		Date Prepared 07/11/13	Time Prepared 1904	

Division Assignment List	1. Branch	2. Division/Group Firebird Spike Staging
---------------------------------	-----------	--

3. Incident Name MID Stuart Creek 2	4. Operational Period 07/12/13 Friday DAY Shift 0800 - 2200
--	--

5. Operations Personnel

Operations Chief	STEVE PARR / JOE REYES	Division/Group	
Operations Chief	KIRKPATRICK (t) / SHINDELAR (t)	Air Attack Supervisor	RUSSELL GRIPP
Branch Director		Safety Officer	JENNIFER BOYD / D. MCKELVEY (t)

6. Resources Assigned this Period

Strike Team/Task Force/ Resource Designator	Leader	Num of Pers.	Trans. Y/N	Drop Off PT./Time	Pick Up PT./Time
STAM	KELLY HELGET	1	N	FB SPIKE 0800	FB SPIKE 2200
DOZ TIMBERLINE E-204 7/20	MATT GAGNON	1	N	FB SPIKE 0800	FB SPIKE 2200
DOZER SMALLWOOD E-261 7/22	CARL BENSON	1	N	FB SPIKE 0800	FB SPIKE 2200
WT HQ TRANSPORTATION E-226	JEREMY WARWICK	1	N	FB SPIKE 0800	FB SPIKE 2200
TRANSPORT E-239				FB SPIKE 0800	FB SPIKE 2200
EMTP	TABITHA HUGHES	1	N	FB SPIKE 0800	FB SPIKE 2200
EMT	TERRI BERRIE	1	N	FB SPIKE 0800	FB SPIKE 2200
RANGE CONTROL EQUIPMENT	GREG SWALLOWS			FB SPIKE 0800	FB SPIKE 2200
DOZERS RC-1,RC-2,RC-3,RC-4,RC-5				FB SPIKE 0800	FB SPIKE 2200
FECONS RC-8				FB SPIKE 0800	FB SPIKE 2200
BOBCAT RC-6				FB SPIKE 0800	FB SPIKE 2200
GRADER RC-3				FB SPIKE 0800	FB SPIKE 2200
DUMP TRUCK RC-7 / TRAILER RC-11				FB SPIKE 0800	FB SPIKE 2200
SUSV RC-12				FB SPIKE 0800	FB SPIKE 2200
HUMMV RC-13,RC-14,RC-15				FB SPIKE 0800	FB SPIKE 2200

7. Control Operations
 Notify operations or branches as resources become available. Resources to remain available to STAM for assignment to line when ordered.

8. Special Instructions
ALL LINE ORDERS WILL BE ORDERED THROUGH 'FIREBIRD SPIKE'

When observable ordnance are encountered, leave them intact, DO NOT TOUCH, contact DIVS and Range Control. When observable cultural resources are encountered, leave them intact and document location. Notify READ. Only aviation resources will be used within impact areas, except on hardened roads coordinated with military Explosive Ordnance Disposal (EOD) range control personnel. 1 mile buffer added to limited entry area.

9. Division/Group Communications Summary

Function	Frequency - RX	Frequency - TX	Tone	System	Channel	System	Channel
Command	168.1000N	170.4500N	123.0	NIFC	1		
Tactical							
Logistics							
Air to Ground	169.1500N	169.1500N		NIFC	12		

Prepared by (Resource Unit Leader) MELODY FOUNTAIN	Approved by (Planning Section Chief) <i>[Signature]</i>	Date Prepared 07/11/13	Time Prepared 1904
---	--	---------------------------	-----------------------

AIR OPERATIONS SUMMARY		PREPARED BY: Jason Nava, AOB		DATE/TIME PREPARED: 7/11/2013 2000 hrs.									
1. INCIDENT NAME: Stuart Creek # 2		7/12/2013		START TIME: 1000									
2. OPERATIONAL PERIOD DATE:		START TIME: 1000		END TIME: 2400									
3. REMARKS (Safety Notes, Hazards, Air Operations, Special Equipment, etc.): 150' Tower erected at Bravo 2 FIXED WING BE AWARE OF HELIBASE LOCATION 12 HOUR DUTY DAY RESTRICTIONS FOR TANKERS STARTING LADD tower control is operational at this time-use caution with in/out traffic Assume roads have wires Range Control Freq 125.300, Military Aircraft only in the Impact Zone, Use caution when smoke is heavy and visibility is limited,		4. Medivac C-GIRZ Hoist Available request		5. TFR: TFR 3/8848 in place. Polygon shape. At and below 5000 feet MSL.									
6. PERSONNEL		7. FREQUENCIES		8. FIXED-WING #Available/Type/Make-Model/FAA N#/ & Bases									
AOBD: Jason Nava		AIR/AIR FW: BRIEFING		Air tankers: T-152, T-155, T-142, T-144, T-145, Scoopers: 264,267,885,202,203,204,891,262 Available at LADD, order direct through UYT Dispatch									
ASGS: Lisa Cardoza		AIR/AIR RW: AIR/GROUND:		UYT Blue: 166.875 DECK: 163.100 Primary 169.1500 Secondary 166.6750									
HLCO:		AIR/GROUND:		Lead planes & ASMs: Available at LADD, order direct through UYT Dispatch									
ATGS: Russ Grip		COMMAND 1. RX 168.1000 TX 170.4500 RX/TX T-123.0		ATGS Aircraft: Commander N848CE, 35E Commander 1010EF, based at LADD, ASTAR 911CV									
ATGS: Jack Firestone		2. RX 170.1000 TX 165.2500 no tone											
ATGS: Dean Thornberry		3. RX 170.0125 TX 165.2500 RX/TX T-123.0											
AFS Helibase: Tom Schmidt		Firebird Airstrip											
HEB 1: Jesse Best 036		DECK FREQ.: 163.100											
Deck:		TOLC FREQ.:											
UYT		(907) 356-5553											
9. HELICOPTERS (Use Additional Sheets As Necessary)													
FAA N#	T Y	MAKE	BASE	AVAIL	START	REMARKS	FAA N#	T Y	MAKE/MODEL	BASE	AVAIL	START	REMARKS
	1	Chinook, U.S. Army	LADD	1000	1100	Fly reservation only	*571SC	2	Bell 212	FIRE BIRD	1000	1030	
	1	Chinook, U.S. Army	LADD	1000	1100	Fly reservation only	516LE	3	Bell 206L3 907-750-6620	LADD	1000	1030	On loan
	1	Blackhawk, U.S. Army	LADD	1000	1100	Fly reservation only	*767H	3	Bell 206L4	FIRE BIRD	0900	0930	PSD equipped with operator
16920	2	Bell 212	Firebird	1100	1130	On loan	*911CV	3	B-3 A-Star	LADD	1000	1030	AA platform A-8
*CGIRZ	2	Bell 212	Firebird	1000	1030	With 8 person crew	*97HJ	2	Bell 205	FIRE BIRD	0900	0930	RAP

SAFETY MESSAGE

Stuart Creek 2

July 12, 2013

USE **L**OOKOUTS, **C**OMMUNICATIONS, **E**SCAPE ROUTES, **S**AFETY ZONE
LCES IN PLACE EVERY TIME

Weather Environment

- Its getting hotter and dryer (watch out #14). **Head's up!**
- Dropping RHs, take weather often and pass on to **DIVISION**
- Winds forecast out of a new direction, stay alert.
- Start hydrating early and keep at it all day. Pace yourselves and meter your work to account for the weather.

Fireline:

- Some roads may still be muddy from recent rains. Be sure to scout them out before committing equipment.
- Div Lima and Mike can have radio coverage gaps. Use human repeaters to maintain contact with crews.
- Make sure you are on the right frequency.
- Police your trash in spikes and coyote camps. Still lots of wildlife out there that can be attracted by the scent.

Transportation issues:

- Div F fire line is the travel road for other divisions. Stay alert for crews working right on the road. Don't block the road with crew buses.
- Keep your speed down. Whatever your mission is, it isn't so important that you have to speed.
- There are a lot of Military/Contractors moving about working on equipment. They may not be familiar with fire line operations.

Prepared by: Jennifer Boyd Safety Officer Date: 7/11/13
Doug McKelvey SOF1(T)

INCIDENT RISK ANALYSIS (ICS 215a)

DIV	HAZARDOUS ACTIONS / CONDITIONS	MITIGATIONS / WARNINGS / REMEDIES
ALL	LCES	<ul style="list-style-type: none"> • Difficult terrain to post lookouts • Use air attack when necessary • Maintain situational awareness
ALL	RAIN	<ul style="list-style-type: none"> • Roads in the fire area can get very slick after wetting rains • Slow down and use extreme caution • 2wd vehicles not recommended on non-graveled roads.
ALL	UNEXPLODED ORDNANCE (UXO)	<ul style="list-style-type: none"> • Recognize-Retreat-Report • DO NOT PICK UP OR TOUCH • Avoid radio transmissions near UXO • Withdrawal to a safe distance • Flag or Identify area where object is located • Deny entry until Ordnance Disposal personnel arrive • Report to you supervisor • All personnel must have UXO training prior to work assignment
ALL	AVIATION	<ul style="list-style-type: none"> • Clear personnel out of target area prior to retardant or bucket drops. • Get clear of dead snags, tops, limbs in drop area. • Working in an area covered by wet retardant should be done with caution due to slippery surfaces.
ALL	FIRE BEHAVIOR	<ul style="list-style-type: none"> • Buildup Index (BUI) values have risen rapidly, well above thresholds for crown fire in spruce, and intense burning in tundra fuels. • Monitor current weather conditions and forecasts. Make sure all personnel receive thorough briefings every shift. • Maintain adequate escape routes and safety zones. Advise all personnel if these are compromised or changed. Set trigger points when appropriate. • Adhere to 10 Std Orders, mitigate 18 situations. • Maintain Situational Awareness.
ALL	FATIGUE	<ul style="list-style-type: none"> • Be alert for signs of fatigue and take breaks as necessary. • Maintain 2:1 work/rest ratio. • Monitor incoming resources for level of fatigue. • Be aware of fatigue associated with sunrise/sunset if from out of state
ALL	HYDRATION	<ul style="list-style-type: none"> • Drinking water before, during and after shifts, up to 1.5 gal. per shift. • Be alert for signs of heat stress in yourself and others.
ALL	ATV USE	<ul style="list-style-type: none"> • Operators must have proper PPE suitable for the vehicle • Only carded and qualified operators • Ensure proper Safety briefings. • Provide daily equipment inspections.
ALL	INDIRECT ATTACK	<ul style="list-style-type: none"> • Extra care with situational awareness due to difficulty in locating lookouts • Carefully monitor weather watching for decreasing RH values • Use lookouts as much as possible/practical in this terrain • Have escapes routes planned and make them known • Ensure communications with your supervisor
ALL	BOAT SAFETY	<ul style="list-style-type: none"> • Vessels must only be operated by qualified personnel • All passengers must have pre trip safety briefing • PFDs worn at all times & worn correctly
ALL	STRUCTURE DEFENSE	<ul style="list-style-type: none"> • Base all actions on current and expected fire behavior • Ensure escape routes or safety zones prior to arrival of fire • Avoid parking under power lines

ALL	Hygiene	<ul style="list-style-type: none"> • Prolonged spike camps are always at risk for Camp Crud • Wash hands after each bathroom visit and before eating. • Keep camp area clean and free of garbage. • Thoroughly wash shared cooking pots and utensils. • Get hand sanitizer from medical to use when away from washing stations. • 	
ALL	WILDLIFE-BEAR-MOOSE	<ul style="list-style-type: none"> • Bears are the Most Dangerous when: You encounter sow with cubs. They feel threatened. You are obstructing their path .You encounter their den, feeding area or trail. • Safety in Numbers: Travel with someone else and avoid hiking at night. Stock animals seem to be advantageous to travel with. • DO NOT RUN: When you run you may look like prey to the bear. • Do not threaten the bear and force it to fight back. • Allow the bear a way out with dignity. • Pretend you are not afraid. • Avoid sows with cubs when at all possible • Back away slowly, but deliberately, in the direction from which you came and at a light angle so that you are moving across her vision. Bear depth perception is poor and if you move directly backwards, it may look like you are moving towards her. • Moose: Stay Back give them their space especially cows w/ calf's, moose have poor eyesight, if charged step behind a tree or get out of sight. 	
INCIDENT NAME: Stuart Creek 2 ICS 215a		DATE PREPARED: July 11th, 2013 TIME PREPARED: 1100 hrs	OPERATIONAL PERIOD 0800-2200 July 12, 2013 Prepared by J.Boyd

INCIDENT RADIO COMMUNICATIONS PLAN			Incident Name STUART CREEK 2 AK-MID-000280			Date/Time Prepared 07/11/13	Operational Period Date/Time DAY & NIGHT SHIFT 07/12/13		
Only frequencies listed on this 205 are authorized for use on this incident.			Hand programmers accept all responsibility for the use of unauthorized frequencies.						
Ch #	Function	Channel Name	Assignment	RX Freq N or W	RX Tone	TX Freq N or W	TX Tone	Mode	Remarks
1	COMMAND	CMD 1	BRANCH III	168.1000N	123.0	170.4500N	123.0	A	POLE HILL
2	COMMAND	CMD 2	BRANCH III	170.1000N		162.1625		A	LINKED TO BLM-UJT-FAIRBANKS
3	COMMAND	CMD 3	BRANCH I	170.0125N	123.0	165.2500N	123.0	A	
4	TACTICAL	TAC 1	DIVISION A / S / F	168.0500N		168.0500N		A	
5	TACTICAL	TAC 2	DIVISION B / R	168.2000N		168.2000N		A	
6	TACTICAL	TAC 3	DIVISION L	166.7250N		166.7250N		A	
7	TACTICAL	TAC 4	DIVISION M / C	168.2500N		168.2500N		A	
8	COMMAND	CMD 4	ICP	170.3625N	123.0	163.3875N	123.0	A	STUART CREEK ICP
9									
10	TACTICAL	TAC 5	DIVISION P	166.7750N		166.7750N		A	STATE TACTICAL 2
11	TACTICAL	TAC 6	STRUCTURE GROUP	159.3750N		159.3750N		A	STATE TACTICAL 1
12	AIR TO GROUND	A/G 1	A/G TACTICAL & LOGISTICAL	169.1500N		169.1500N		A	
13	AIR TO GROUND	A/G 2	A/G ROTOR	166.6750N		166.6750N		A	
14	URGENT AIR CONTACT	AIR GUARD	ALL DIVISIONS	168.6250N		168.6250N	110.9	A	USE ONLY FOR URGENT AIRCRAFT CONTACT, USE TONE 1
15									
16	URGENT AIR CONTACT	AIR GUARD	ALL DIVISIONS	168.6250N		168.6250N	110.9	A	USE ONLY FOR URGENT AIRCRAFT CONTACT, USE TONE 1

Prepared by

Kody Kerwin

Kody Kerwin, COML CIIMT #1

S 205 - 2007H

MODEM - ANALOG, D - DIGITAL

Incident Location
North Pole, AK LAT: N 64 45.1060' LONG: W 147 20.9309'

**North Pole ICP
(907) 451-0590
Dial 9 For An Outside Line**

Section	Extension
Incident Commander / Liaison	30263
Public Information Officer	30260
Safety Officer / Operations	30265
Plans Section Chief / Training Specialist / Computer Tech Spec / Documentation Unit Leader	30262
Incident Meteorologist / Situation Unit Leader / Fire Behavior	30261
Check In / Resource Unit / DMOB	30256
Check In / Resource Unit / DMOB Fax	(907) 490-2831
Finance Section Chief / Cost Unit	30255
Time Unit	30254
Finance Fax	(907) 490-2833
Logistics Section Chief / Facilities	30257
Medical Unit Leader	30228
Communications Unit	30264
Ground Support	30258
Supply / Ordering	30259
Supply / Ordering Fax	(907) 490-2832
Please Stop Using This Fax	(907) 488-1232

22

MEDICAL PLAN 206 ICS	1. INCIDENT NAME Stuart Creek 2	2. DATE PREPARED July 11, 2013	3. TIME PREPARED 2000	4. OPERATIONAL PERIOD July 12, 2013 0800-2200
	5. INCIDENT MEDICAL AID STATIONS			

MEDICAL AID STATIONS	LOCATION	PARAMEDICS	
		YES	NO
Firebird Camp	Firebird Assault Strip	X	
Line EMT's as assigned	Assigned Divisions	X	X
North Pole Base	North Pole Elementary School		X

6. TRANSPORTATION
A. AMBULANCE SERVICES

NAME	LOCATION	PHONE	PARAMEDICS	
			YES	NO
Eielson AFB	AFB	911 or (907)356-5551	X	
Steese FD Ambulance (Pleasant Valley Area)	Pleasant Valley, AK	911 or (907)450-6507	X	

B. INCIDENT AMBULANCES

NAME	LOCATION	PARAMEDICS	
		YES	NO
Ft Wainwright FD Ambulance (ground)	Firebird Spike (907)529-9905	X	

C. MEDIVAC SERVICES

NAME	LOCATION	PHONE	Hoist	ALS	BLS
Evergreen Medivac (Type 2 Helicopter)	Ft Greely, Delta Junction, AK	(907)353-9170 (907)356-5551	X	X	
Guardian Flight (Fixed wing)	Fairbanks	(907)356-5551		X	

7. HOSPITALS

NAME	ADDRESS	TRAVEL TIME		PHONE	HELIPAD		BURN CTR	
		AIR	GRND		YES	NO	YES	NO
		Fairbanks Memorial 64*49.90' x 147*44.50'	1650 Cowles Street, Fairbanks, AK 99701		30 min	90 min	(907)458-5556 (907)353-9170	X
Anchorage-Providence Hosp 61*11.62' x 149*49.42'	3200 Providence Dr Anchorage, AK 99504	2 hrs	6 hrs	(907)212-3111	X			X
Harborview Burn Center 47* 36.190 x 122*19.500	325 9th Ave Seattle, WA 98104	4hrs		(206) 284-2876	X		X	

8. MEDICAL EMERGENCY PROCEDURES

LINE MEDICAL EMERGENCY:

Crew Supervisor to contact Division Supervisor/Operations with patient complaint/condition and location. Division Supervisor/Operations contacts communications:

- Division Supervisor/Operations to use "injury or incident communication protocol" on next page
- Division Supervisor/Operations will run medical emergency on command channel
- Communications contacts MEDL via radio or cell phone and clears command channel for emergency traffic
- Medical Unit Leader will:
 1. Have communications dispatch ground/air transport resources
 2. Develop primary and contingency transport plan
 3. Notify Safety, Logistics, operations and Air ops

SPIKE CAMP MEDICAL EMERGENCY DAY:

Notify Communications of camp emergency
Communications contacts Medical Unit with patient complaint/condition and location.

- Medical Unit contacts:
 - * Safety, Logistics and operations
- Medical Unit Leader will:
 1. Have communications dispatch ground/air transport resources
 2. Develop primary and contingency transport plan

SPIKE CAMP MEDICAL EMERGENCY NIGHT:

Notify Facilities and/or Medical manager at spike camp.
Medical manager will contact MEDL by cell phone.

- Medical Unit Leader contacts:
 - * Safety, Logistics and operations
- Medical Unit Leader will:
 1. Dispatch ground/air transport resources
 2. Develop primary and contingency transport plan

206 ICS	9. PREPARED BY: (Medical Unit Leader) Matthew Lipson MEDL <i>Matthew Lipson</i>	10. REVIEWED BY: (Safety Officer) <i>Jennifer Boyd</i> Jennifer Boyd SOR
	33	

Injury or Incident Communications Protocol

DECLARE: Medical Emergency or Non-emergency Medical transport

Best transport method: Ambulance Helicopter Vehicle

Location _____

Situation _____

Any special equipment required _____

Number of injured _____ Type of injuries _____

Closest pick up point (DP, Helispot) _____

LOC _____ Resp. _____ Pulse _____ BP _____ Weight _____

Injury _____

Medical History/Allergies _____

Air Transportation Triage

	Ground or Air Ambulance to Hosp.	Transport to Med Unit
Mechanism	Hit by a falling tree or large branch Fall of 10' or more Insect bite with shortness of breath Signs of heat stroke (hot, dry, disoriented) Burn Injury greater than 1% body area	Minor dehydration Cut or laceration with bleeding controlled Minor bites and Stings Minor burns
Area Injured	Significant Blunt or Penetrating Trauma to Head, Neck, Chest, Abdomen or pelvis Any Arm or Leg fracture above the Joint	Minor blunt trauma Minor penetrating trauma Extremity sprains and strains Simple fracture below elbow or knee
Symptoms	Disoriented Chest Pain or Shortness of Breath Weak or absent radial pulse Pale, cold and sweating	Alert and oriented No shortness of breath Good pulses

Medivac Sites

H-1	64 46.275 N	146 53.233 W
H-2	64 40.768 N	146 48.229 W
H-3	64 52.552 N	146 46.660 W
H-4	64 47.591 N	146 55.300 W
H-5	64 38.415 N	146 40.352 W
H-6	64 42.647 N	146 54.695 W

If air or ground ambulance is DELAYED:

Package and transport patient to rendezvous with Ambulance. Re-route EMS helicopter to rendezvous point as appropriate.

If Declaring an "Incident within the Incident"

The closest DIVS will respond to manage the incident. They are responsible for giving an accurate size up, ensuring scene safety, setting priorities and initiating an appropriate response. The closest Safety Officer and Line EMS will respond to the scene to assist the Branch Director or DIVS. Secure site and begin initial investigation when situation is stabilized.



Human Resource Message

Thoughts for the day!

Someone will always be looking at you as an example of how to behave.
Don't let them down.

Spend less time worrying about who is right and more time deciding on
what's right.

Tact is the ability to see others as they wish to be seen.

You never get a second chance to make a first impression.

There is no right way to do a wrong thing.

Patience carries a lot of "WAIT"!

No one can upset you without your permission.

Michael Donch
HRSP

Stuart Creek #2 Fire Incident Trainee/Trainer Data Form

Training Specialist: Robert Rivelle: Cell - 707.498.1761

- All Incident Trainees, including those on Firefighting Modules: Complete this form and drop off in the box located in the building at Fireball Spike or at the ICP in North Pole, AK. Prior to DEMOB, meet with the Training Specialist to close-out your training package.

A. Trainee Data

Trainee Name: _____ ICS Trainee Position: _____

Request # (A,C,E or O): ____--____ Agency Designator (Example WY-MBF): _____

Cell / Contact # While on Incident: _____ Home Unit Position: _____

Date Assigned: _____ Fire Name / Order Number: **Stuart Creek #2 / AK-MID-280**

Name of the person and location to mail your training package to: (Fire Chief, Training Officer)

Name: _____ Agency: _____

Agency Address: _____

City: _____ State: _____ Zip Code: _____ Phone: _____

B. Trainee Prerequisites

1. Possesses valid Red Card or agency certification card? Yes No

2. Trainee has current position task book issued by home unit? Yes No

3. Trainee has "incident issued" task book with concurrence by home unit. Yes No

C. Trainer/Evaluator Data Trainer / Evaluator Name: _____

ICS position on fire: _____ Agency: _____

Address (optional): _____ City: _____

State: _____ Cell / Contact While on Incident: _____

D. Trainee Goals - (2 tasks or objectives you would like to address).

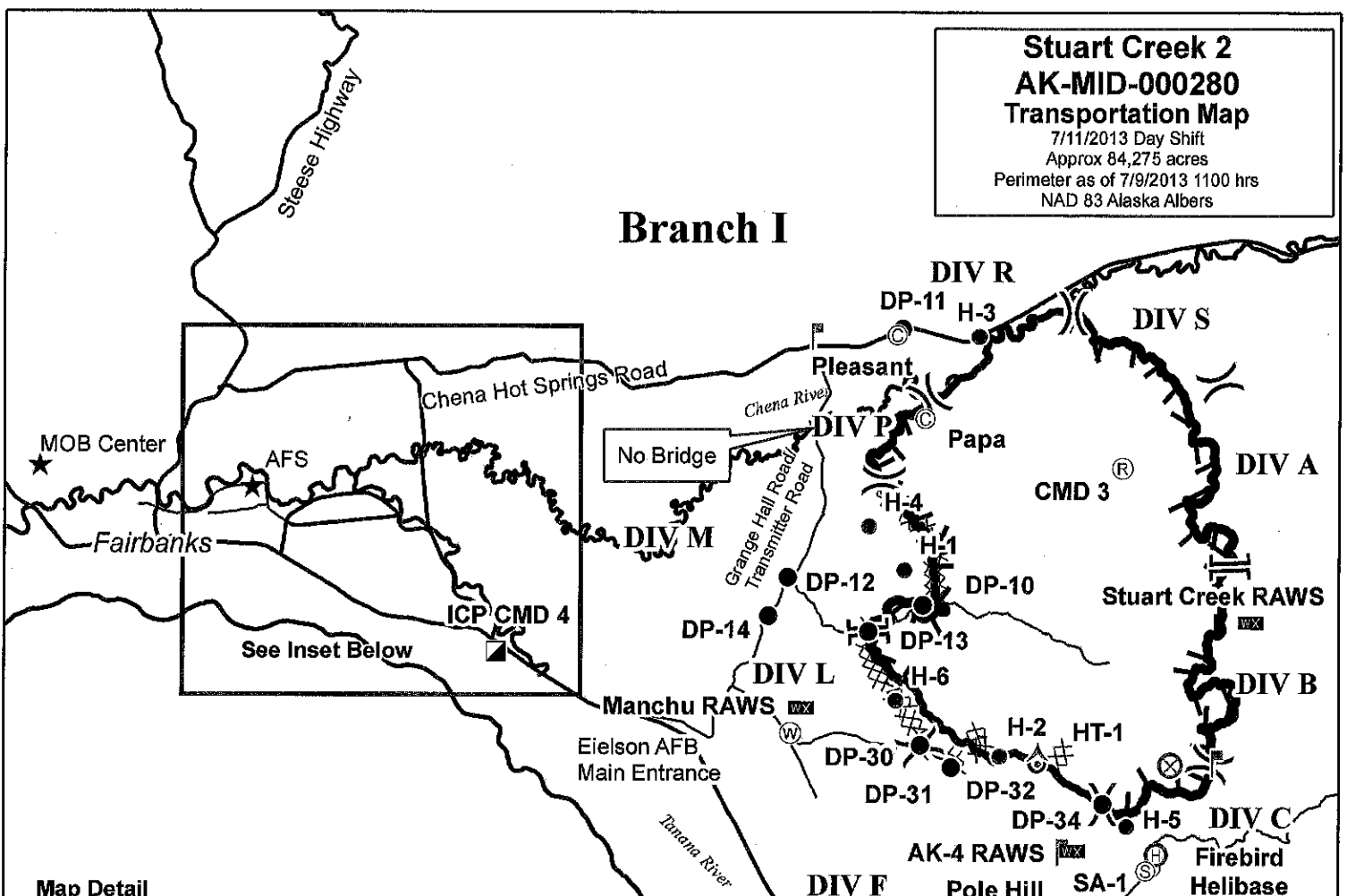
1. _____

2. _____

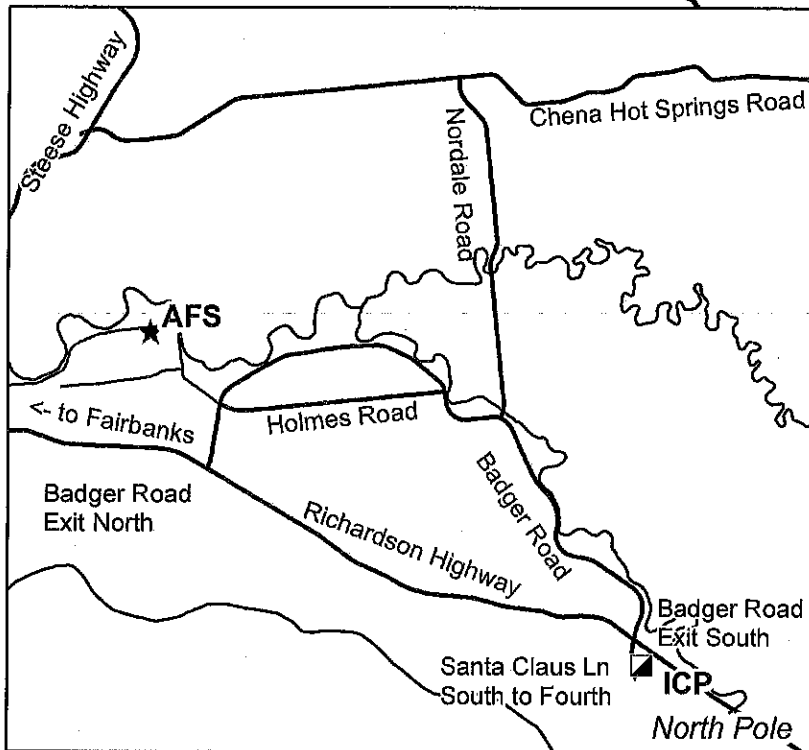
26

Stuart Creek 2
AK-MID-000280
Transportation Map
 7/11/2013 Day Shift
 Approx 84,275 acres
 Perimeter as of 7/9/2013 1100 hrs
 NAD 83 Alaska Albers

Branch I



Map Detail



To ICP: Take Badger South/Santa Claus Lane exit and drive south through rotaries to Fourth Avenue. North Pole Elementary School is at corner of Fourth and Snowman.

To Chena Hot Springs Road: Take Badger Road to Nordale, and follow Nordale north to Chena Hot Springs Road.

