

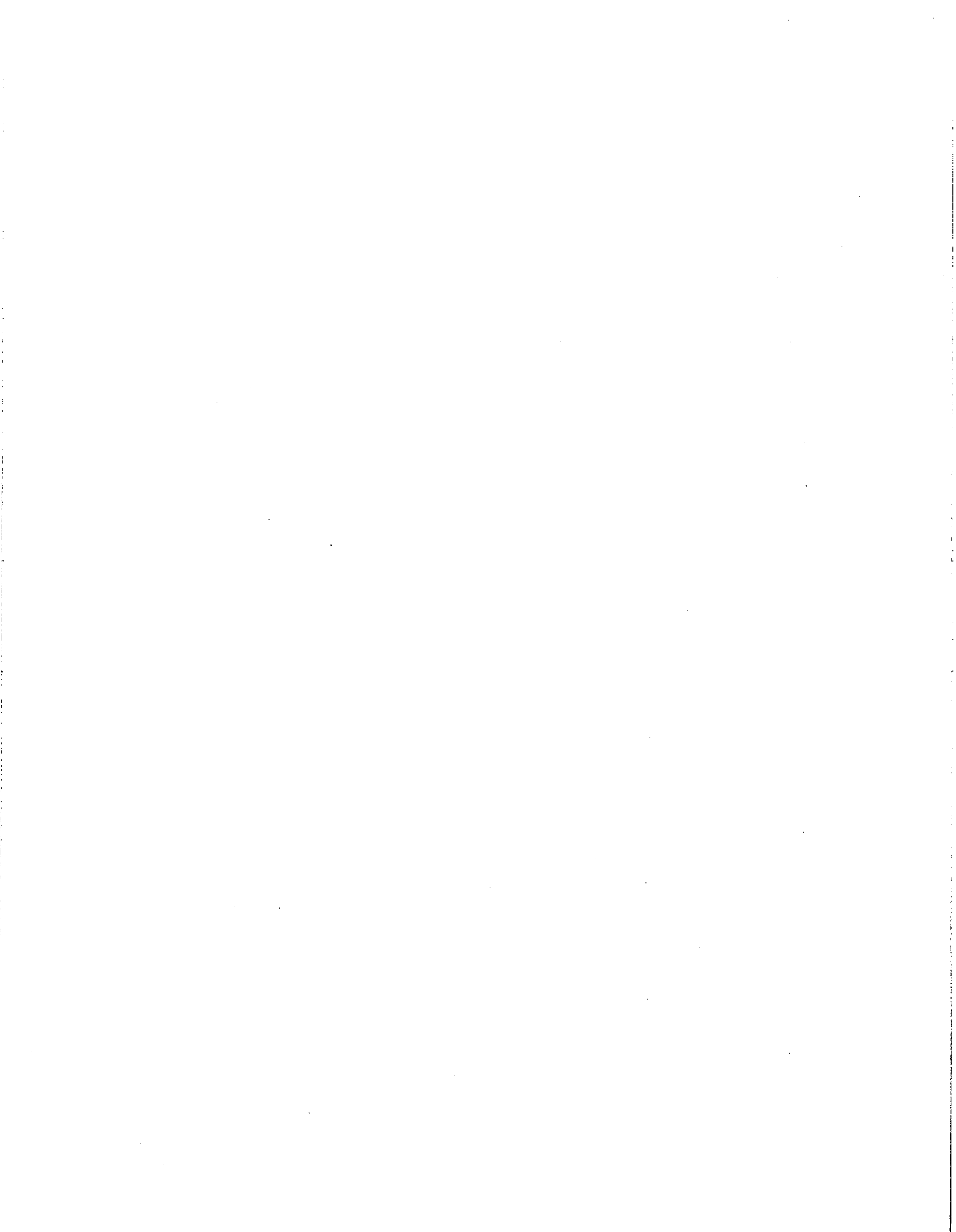
STUART CREEK 2 FIRE



July 13th, 2013
Day 0800 - 2200

Meeting Schedule

0800 Briefing @ Lion and Firebird Spike
1100 Cooperators Meeting @ North Pole
1800 Planning Meeting @ North Pole



INCIDENT OBJECTIVES	1. Incident Name Stuart Creek 2	2. Date Prepared 7-12-13	3. Time Prepared 2300
----------------------------	---	------------------------------------	---------------------------------

4. Operational Period
7-13-13 0800-2200 hours


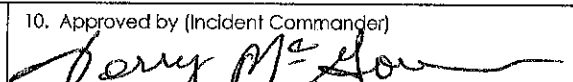
5. General Control Objectives for the Incident (include alternatives)
Control Objectives:
 Keep Fire:
 - North of the Salcha River.
 - East of a line along the transmitter road, north to the Chena River and south along the Trans-Alaska Pipeline to the Salcha River.
 - West of the south fork Chena River, south along eastern boundary of the Training Area, south to the Salcha River.
 - South of the Chena River.

Management Objectives:
 - Provide for firefighter and public safety utilizing LCES, 10 / 18, and risk management from IRPG and required UXO briefings.
 - Maintain and protect the integrity of infrastructure within Yukon Training Area and Eielson AFB.
 - Provide protection to private residences, cabins, improvements and jurisdictional lands within and adjacent to the fire area.
 - Minimize or mitigate threats to known cultural resources by utilizing READs and/or archeologists.
 - Avoid application of retardant within 300 feet of stream channels and water ways.
 - Coordinate and communicate fire information with the public and all stakeholders.
 - Coordinate, develop and implement fire suppression repair.
 - Support local unit initial attack as requested.

6. Weather Forecast for Period
 WEATHER: Sunny.
 TEMPERATURES: 77 to 82 (+2)
 MIN HUMIDITY: 18 to 22% (-2)
 WINDS (EYE LEVEL): UPSLOPE/UPVALLEY winds 2 to 5 mph. RIDGETOPS: East to southeast wind 3 to 7 mph.

7. General Safety Message
Situational Awareness – Conduct thorough briefings with your crew, and tailgate safety sessions .Crews know where your EMTs are, and ensure communications are in place. Make LCES personal for your piece of real estate.
 See attached for additional information

8. Attachments (mark if attached)		
<input checked="" type="checkbox"/> Incident Objectives – ICS 202	<input checked="" type="checkbox"/> Division Assignment List – ICS 204	<input checked="" type="checkbox"/> Medical Plan - ICS 206
<input checked="" type="checkbox"/> Organization List - ICS 203	<input checked="" type="checkbox"/> Safety Message	<input checked="" type="checkbox"/> Human Resource Message
<input checked="" type="checkbox"/> Fire Weather Forecast	<input checked="" type="checkbox"/> Incident Safety Analysis – ICS 215A	<input checked="" type="checkbox"/> Camp Map
<input checked="" type="checkbox"/> Fire Behavior Forecast	<input checked="" type="checkbox"/> Air Ops Summary – ICS 220	<input checked="" type="checkbox"/> Transportation
<input checked="" type="checkbox"/> Trainee Data Form	<input checked="" type="checkbox"/> Communications Plan - ICS 205	<input checked="" type="checkbox"/> Unit Log – ICS 214

9. Prepared by (Planning Section Chief) 	10. Approved by (Incident Commander) 
--	--

ICS Form 203 ORGANIZATION ASSIGNMENT LIST		1. INCIDENT NAME	2. DATE PREPARED	3. TIME PREPARED
		Stuart Creek 2	7-12-13	1800
5. INCIDENT COMMAND STAFF		4. OPERATIONAL PERIOD (DATE/TIME) 7-13-13 0800-2200		
Position	Name	9. OPERATIONS SECTION		
INCIDENT COMMANDER	Jerry McGowan	CHIEF	Steve Parr / Joe Reyes	
DEPUTY		PLANNING OPS	Kathy Kirkpatrick(t)/Bobby Shindelar (t)	
SAFETY OFFICER	Jennifer Boyd / Doug McKelvey (t)	DEPUTY OPS		
INFORMATION OFFICER	Hadley / Phelps / Gibbs (t)	CONTINGENCY OPS		
LIAISON OFFICER	Steve Negro	a. BRANCH I		
HUMAN RESOURCE SPECIALIST	Michael Donch	BRANCH DIR	Linda Szczepanik / John Flores (t)	
6. AGENCY REPRESENTATIVES		GROUP	STRUCTURE	Bob Myers
AGENCY	NAME	DIVISION	M	Jim Snow
US Army	Col. Johnson	DIVISION	P	Hans Smith / Josh Turnbow
US Air Force	Maj. Tutty	DIVISION	R	Robert Yeager
Eastern Area IARR	To / Oliver / Clark / Greaves	DIVISION	S	Reed Callis
Alaska State Parks	Lona Boyarski	GROUP	A	Unstaffed
Alaska Fire Service	Randy Lenon	b. BRANCH III		
Fairbanks N.Star Borough	Dave Gibbs	BRANCH DIRECTOR	Ron Garcia	
Alaska DNR	Gordon Amundson	DIVISION	B/C	Peter Kelley / Jon Holmes (t)
Alaska State Troopers	Capt. Barrick	DIVISION	K	Rick Marinelli / Kevin LaBella (t)
7. PLANNING SECTION		DIVISION	F	Paul Leucsh, Jason Devcich (t)
CHIEF	Gary Montgomery	DIVISION	L	Bill Steers / Phil OoSahwe (t)
CHIEF	Christie Neill	DIVISION		
RESOURCES UNIT	Fountain / Escalera / Schillinger	DIVISION		
SITUATION UNIT	Tad Morelock / Al Yanagisawa	DIVISION		
STRATEGIC OPS PLANNER	Wayne Cook	DIVISION		
DEMOBILIZATION UNIT	John Roberts	DIVISION		
CTSP	Jonathan Wilson	c. BRANCH -		
TNSP	Robert Rivelle	FIREBIRD STG	STAGING	Kelly Helget
FBAN / LTAN	Patton / St. Clair (t) / Harris (t)			
IMET	Dan Byrd / Christan Cassell (t)			
GISS	Melanie Hans / James Roberts			
READ	Buzby / Rees			
Range Control	(Day) Beck / (Night) Stepp			
8. LOGISTICS SECTION		d. AIR OPERATIONS BRANCH		
CHIEF	Rich Davis	AIR OPERATIONS BR. DIR.	Jason Nava	
CHIEF	Jim Hogg	AIR TACTICAL GROUP SUP.	Russ Gripp	
a. SUPPORT BRANCH		AIR SUPPORT GROUP SUP	Lisa Cardoza	
SECURITY		HELICOPTER COORDINATOR		
SUPPLY UNIT	Jeff Carter			
FACILITIES UNIT	Tim Gardner			
GROUND SUPPORT UNIT	Dave Trussell			
b. SERVICE BRANCH		10. FINANCE/ADMINISTRATION SECTION		
COMMUNICATIONS UNIT	Kody Kerwin	CHIEF	Robbin Ekman	
COMMUNICATIONS MANG	Scott LaRue	CHEIF	Rene White	
FOOD UNIT	Ken Haberl	TIME UNIT	Glenda Lindsay	
RECEIVING	Lori Cayo	PERSONAL TIME	Renee Madrid	
ORDERING	Mike Worford	COMPENSATION/CLAIMS UNIT	Lisa Dow (t)	
MEDICAL UNIT	Matt Lipson	COST UNIT	Christal Rohrbach / Robert Taylor (t)	
EQUIPMENT MANAGER	Davis Harsh / Rick Miller	EQTR	Sandy Tarvin	
PREPARED BY (RESOURCES UNIT)				
Jason Schillinger				



Stuart Creek #2 Fire Weather Forecast



FORECAST NO: 8
PREDICTION FOR: Friday 13 July 2013

NAME OF FIRE: Stuart Creek #2
UNIT: MID

SHIFT DATE: June 12th, 2013

Incident Meteorologist:
Dan Byrd
Christian Cassell (T)

FORECAST ISSUED: 2000 ADT July 12th, 2013

WEATHER DISCUSSION: High pressure overhead will persist through at least late Sunday. Warm and dry conditions will continue today with RHs in the upper teens to lower 20s and then raise 2 to 4 percent for Sunday as high temperatures approach the 80s. Light upslope/upvalley winds will gradually give way to increasing southwest winds Sunday evening through Sunday night.

WEATHER FORECAST SATURDAY DAY SHIFT:

WEATHER: Sunny.
TEMPERATURES: 77 to 82 (+2)
MIN HUMIDITY: 18 to 22% (-2)
WINDS (EYE LEVEL): UPSLOPE/UPVALLEY winds 2 to 5 mph. RIDGETOPS: East to southeast wind 3 to 7 mph.
CHANCE OF WETTING RAINS: 0%
LAL: 1

WEATHER FORECAST SATURDAY NIGHT:

WEATHER: Clear.
MIN TEMPERATURES: 45 to 50 (0)
MAX HUMIDITY: 60 to 70% (0)
WINDS (EYE LEVEL): RIDGETOPS: Southwest wind 3 to 6 mph. DOWNVALLEY/DOWNSLOPE winds 3 to 6 mph.
CHANCE OF WETTING RAINS: 0%
LAL: 1

OUTLOOK FOR SUNDAY:

WEATHER: Sunny with increasing clouds. A conditional threat for isolated thunderstorms with dry lightning after 5 pm.
TEMPERATURES: 79 to 84 (+2)
MIN HUMIDITY: 22 to 27% (+4)
WINDS (EYE LEVEL): RIDGETOPS: Southwest wind 8 to 12 mph with gusts to 18 mph. VALLEYS: Southwest wind 4 to 8 mph. Gusty outflow winds near showers and thunderstorms.
CHANCE OF WETTING RAINS: < 5%
LAL: 6

EXTENDED FORECAST FOR MONDAY through TUESDAY: Continued warm but with gradually increasing moisture in the lower and middle levels of the atmosphere allowing for minimum RH values to rise to near 30 percent Monday. Afternoon and evening isolated to scattered t-storms will be possible along with gusty west winds. Tuesday looks to be a bit cooler and more moist with increasing clouds and the chance of showers and thunderstorms. West winds look to be gusty at times, especially with outflow near showers and storms.

Sunrise Friday: 0346 ADT Sunset Friday: 0005 ADT
Thursday Observation summary at Stuart Creek RAWS (midnight through 1800):
Max T: 76
Min RH: 29
Max Wind: NW 05g12 mph
Rain Accumulation (0000 – 2000): 0.00 inches

FIRE BEHAVIOR FORECAST

FORECAST NUMBER: # 11	TYPE OF FIRE: Wildfire
FIRE NAME: Stuart Creek #2	OPERATIONAL PERIOD: Day – July 13, 2013
DATE ISSUED: 07/12/13	TIME ISSUED: 2000 hrs
UNIT: BLM-AFS	SIGNED: Tom St. Clair FBAN(T)

WEATHER SUMMARY:

Temperature: 77 to 82 degrees Minimum RH: 18 to 22% Winds (Eye-Level): UPSLOPE/UPVALLEY winds 2 to 5 mph. RIDGETOPS: East to southeast wind 3 to 7 mph.

See attached Fire Weather Forecast for more details.

Take weather observations, and call in hourly to Communications. Please include location and elevation.

FIRE BEHAVIOR

GENERAL:

Warming and drying trend continues. Winds moderating and changing to east/southeast.

Divisions B, C, F: Fire behavior will be generally benign because most of the flashy fuels have burned out. Expect to see isolated smokes and possibly torching. If fire becomes established in an unburned spruce stand it may torch or make a small run.

Divisions K, L, M, and P: Look for smoldering fire to increase into flaming in dozer berms, squirrel caches, jackstrawed timber, deep duff, and other areas sheltered from moisture. Small runs are possible in unburned patches of spruce or mixed stands with a heavy spruce component.

Division R: Smoldering and small flames with some potential for torching where heat remains underneath spruce canopies.

Division S, A: Some flaming and torching expected in areas with heat. Scattered areas with heat will begin to flame and creep or spread slowly downhill to the east in spruce stands.

FUELS:

Manchu RAWS Predicted Fire Weather Indices FFMC 91.5, DMC 55.6, DC 343.9, ISI 7.9, BUI 79.2, FWI 23.8

Continuous Black Spruce worst case scenario:

FL Head: Up to 9'

ROS Head: Up to 40 ch/hr

Majority of the fuels around the fire and within

Spruce/Hardwood mix worst case scenario:

FL Head: Up to 3'

ROS Head: Up to 20 ch/hr

Spotting distance: .1 miles

Probability of ignition: 50-90%

AIR OPERATIONS:

Be wary of snags falling near water drops.

SAFETY

Surface fire spread is dependent on fine fuels drying out and fine fuels are very responsive to changes in weather. Keep informed on weather conditions and forecasts. Pay attention to fireline weather observations as they are the most detailed and up to date information available.

Division Assignment List	1. Branch I	2. Division/Group M
---------------------------------	-----------------------	-------------------------------

3. Incident Name MID Stuart Creek 2	4. Operational Period 07/13/13 Saturday DAY Shift 0800 - 2200
---	---

5. Operations Personnel

Operations Chief	STEVE PARR / JOE REYES	Division/Group	JAMES SNOW
Operations Chief	KIRKPATRICK (t) / SHINDELAR (t)	Air Attack Supervisor	RUSSELL GRIPP
Branch Director	SZCZEPANIK / FLORES (t)	Safety Officer	JENNIFER BOYD / D, MCKELVEY (t)

6. Resources Assigned this Period

Strike Team/Task Force/ Resource Designator	Leader	Num of Pers.	Trans. Y/N	Drop Off PT./Time	Pick Up PT./Time
CREW T1 MIDNIGHT SUN IHC 7/18	JACOB B LIVINGSTON	19	N	FB SPIKE 0800	FB SPIKE 2200
CREW T1 WOLF CREEK 7/13	ERIC MILLER	20	N	FB SPIKE 0800	FB SPIKE 2200
CREW T2IA MCKENZIE RIVER 7/16	NICHOLAS BEDDOW	20	N	FB SPIKE 0800	FB SPIKE 2200
CREW T2IA CENTRAL OREGON 7/16	ROD SAMS	20	N	FB SPIKE 0800	FB SPIKE 2200
CREW T2 RUBY 7/15	ALLEN TITUS	17	N	FB SPIKE 0800	FB SPIKE 2200
CREW T2IA MHR # 1 7/23	PAUL SMITH	20	N	FB SPIKE 0800	FB SPIKE 2200
W/T 85 EIELSON AFB		1	N	FB SPIKE 0800	FB SPIKE 2200
W/T CHIPS 1 E-18	ZACK STOCKTON	1	N	FB SPIKE 0800	FB SPIKE 2200
DOZER STONE BOY E-294	SEIBOLD/ FORTUNE	2	N	FB SPIKE 0800	FB SPIKE 2200
DOZER HOWARD E-265	HOWARD/ BORASH	2	N	FB SPIKE 0800	FB SPIKE 2200
DOZER KLP EQUIPMENT E-267	GARRY PFALMER	1	N	FB SPIKE 0800	FB SPIKE 2200
DOZ BLACK GOLD E-207 7/20	ROBERT PACKER	1	N	FB SPIKE 0800	FB SPIKE 2200
DOZ REMOTE # 1 E-205	TIM KNIGHT	1	N	FB SPIKE 0800	FB SPIKE 2200
DOZ TIMBERLINE E-204 E-204	MATT GAGNON	1	N	FB SPIKE 0800	FB SPIKE 2200
SKIDGINE - SOFT TRACK E- 61 7/16	JOSH COVEY	1	N	FB SPIKE 0800	FB SPIKE 2200
SKIDGINE - SOFT TRACK E-297 7/16	CALEB COVEY	1	N	FB SPIKE 0800	FB SPIKE 2200
TFLD	LAKOTA BURWELL 7/22	1	N	FB SPIKE 0800	FB SPIKE 2200
TFLD	MARCUS SWAN 7/22	1	N	FB SPIKE 0800	FB SPIKE 2200
TFLD	KAREN SCHOLL 7/25	1	N	FB SPIKE 0800	FB SPIKE 2200
TFLD(t)	ENO-HENDREN 7/15	1	N	FB SPIKE 0800	FB SPIKE 2200

7. Control Operations
 Complete dozer and hand line from Branch break at DP 13 on Beaver Creek Rd north to Division M/P break to keep fire from spreading west towards DET 460. Mop up heat along completed fire line to 100 feet.

8. Special Instructions
 ALL LINE ORDERS WILL BE ORDERED THROUGH 'FIREBIRD SPIKE'
 When observable ordnance are encountered, leave them intact, **DO NOT TOUCH**, contact DIVS and Range Control.
 When observable cultural resources are encountered, leave them intact and document location. Notify READ.
 Only aviation resources will be used within impact areas, except on hardened roads coordinated with military Explosive Ordnance Disposal (EOD) range control personnel. 1 mile buffer added to limited entry area.
 Note location of damaged electrical infrastructure and notify DIVS. **-FT WAINWRIGHT AMBULANCE WILL BE @ DP 12 OR 14-**

9. Division/Group Communications Summary

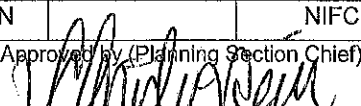
Function	Frequency - RX	Frequency - TX	Tone	System	Channel	System	Channel
Command	170.0125N	165.2500N	123.0	NIFC	3		
Tactical	168.2500N	168.2500N		NIFC	7		
Logistics							
Air to Ground	169.1500N	169.1500N		NIFC	12		

Prepared by (Resource Unit Leader) MELODY FOUNTAIN	Approved by (Planning Section Chief) <i>[Signature]</i>	Date Prepared 07/12/13	Time Prepared 2000
--	--	----------------------------------	------------------------------

Division Assignment List		1. Branch I	2. Division/Group P			
3. Incident Name MID Stuart Creek 2		4. Operational Period 07/13/13 Saturday DAY Shift 0800 - 2200				
b. Operations Personnel						
Operations Chief	STEVE PARR / JOE REYES	Division/Group	HANS SMITH 7/19 / M. ROBINETT 7/25			
Operations Chief	KIRKPATRICK (t) / SHINDELAR (t)	Air Attack Supervisor	RUSSELL GRIPP			
Branch Director	SZCZEPANIK / FLORES (t)	Safety Officer	JENNIFER BOYD / D. MCKELVEY (t)			
c. Resources Assigned This Period						
Strike Team/Task Force/ Resource Designator	Leader	Num of Pers.	Trans. Y/N	Drop Off PT./Time	Pick Up PT./Time	
CREW T1 MENDOCINO 7/17	NICK BUNCH	20	N	PAPA SPIKE 0800	PAPA SPIKE 2200	
CREW T1 CHENA IHC 7/23	CHRIS MARABETTA	21	N	PAPA SPIKE 0800	PAPA SPIKE 2200	
CREW T2IA MOF # 2 7/20	WILLIAM COBER	20	N	PAPA SPIKE 0800	PAPA SPIKE 2200	
CREW T2IA MDS # 1 7/20	BRIAN STUPAK	20	N	PAPA SPIKE 0800	PAPA SPIKE 2200	
CREW T2IA DES # 1 7/20	ERICH BURKENTINE	20	N	PAPA SPIKE 0800	PAPA SPIKE 2200	
CREW T2 NORTHSTAR		20	N	PAPA SPIKE 0800	PAPA SPIKE 2200	
STLC	ANTHONY CHAPMAN 7/13	1	N	LION SPIKE 0800	LION SPIKE 2200	
STLC	DALE WOITAS 7/25	1	N	LION SPIKE 0800	LION SPIKE 2200	
STLC	CHRIS MOORE 7/25	1	N	LION SPIKE 0800	LION SPIKE 2200	
STLC (t)	NICK ADAMSON 7/15	1	N	LION SPIKE 0800	LION SPIKE 2200	
FOBS	KAY KUDO 7/18	1	N	LION SPIKE 0800	LION SPIKE 2200	
FOBS	JOEL SATHER 7/22	1	N	LION SPIKE 0800	LION SPIKE 2200	
FOBS	TIM EPP 7/20	1	N	LION SPIKE 0800	LION SPIKE 2200	
FOBS (t)	COLLINS BONDS 7/22	1	N	LION SPIKE 0800	LION SPIKE 2200	
SOFR	JAYSON SMITH 7/18	1	N	LION SPIKE 0800	LION SPIKE 2200	
EMT (IMS-M)	PHIL GROSSARTH 7/17	1	N	LION SPIKE 0800	LION SPIKE 2200	
EMTP (EMPF)	TERRY STEVENSON 7/18	1	N	LION SPIKE 0800	LION SPIKE 2200	

7. Control Operations
 Continue direct hand line south from P/R division break south toward Division M. Construct 10 foot wide line cutting trees along fire edge. Lay hose supported with pumps and mop up all heat up to 100 feet where tree cut line complete.

8. Special Instructions
 ALL LINE ORDERS WILL BE ORDERED THROUGH 'FIREBIRD SPIKE'
 When observable ordnance are encountered, leave them intact, DO NOT TOUCH, contact DIVS and Range Control.
 When observable cultural resources are encountered, leave them intact and document location. Notify READ.
 Only aviation resources will be used within impact areas, except on hardened roads coordinated with military Explosive Ordnance Disposal (EOD) range control personnel. 1 mile buffer added to limited entry area.

9. Division/Group Communications Summary							
Function	Frequency - RX	Frequency - TX	Tone	System	Channel	System	Channel
Command	170.0125N	165.2500N	123.0	NIFC	3		
Tactical	166.7750N	166.7750N		NIFC	10		
Logistics							
Air to Ground	169.1500N	169.1500N		NIFC	12		
Prepared by (Resource Unit Leader)	Approved by (Planning Section Chief)			Date Prepared	Time Prepared		
MELODY FOUNTAIN				07/12/13	2000		

Division Assignment List	1. Branch III	2. Division/Group F
---------------------------------	-------------------------	-------------------------------

3. Incident Name MID Stuart Creek 2	4. Operational Period 07/13/13 Saturday DAY Shift 0800 - 2200
---	---

5. Operations Personnel

Operations Chief	STEVE PARR / JOE REYES	Division/Group	P. LEUSCH 7/17 / DEVCICH (t) 7/15
Operations Chief	KIRKPATRICK (t) / SHINDELAR (t)	Air Attack Supervisor	RUSSELL GRIPP
Branch Director	RON GARCIA	Safety Officer	JENNIFER BOYD / D. MCKELVEY (t)

6. Resources Assigned this Period

Strike Team/Task Force/ Resource Designator	Leader	Num of Pers.	Trans. Y/N	Drop Off PT./Time	Pick Up PT./Time
CREW T2 UPPER KALSKAG 7/18	JEFF KERR	16	N	FB SPIKE 0800	FB SPIKE 2200
CREW T2 ST. MARY'S 7/18	LARRY OLIN	16	N	FB SPIKE 0800	FB SPIKE 2200
ENG 20 FORT GREELEY	PLUMBLY	2	N	FB SPIKE 0800	FB SPIKE 2200
WT MIDSTATE T2 7/15	BRIAN ARMSTRONG	1	N	FB SPIKE 0800	FB SPIKE 2200
WT GOLDSTREAM T2 7/11	DAVE HYLAND	1	N	FB SPIKE 0800	FB SPIKE 2200
WT BLACK GOLD T2 E-225 7/23	LONNIE COPELAND	1	N	FB SPIKE 0800	FB SPIKE 2200
EXCAV WV BUILDERS E-309 7/24		1	N	FB SPIKE 0800	FB SPIKE 2200
EXCAV FAIRBANKS		1	N	FB SPIKE 0800	FB SPIKE 2200
SKIDG FAIRBANKS CONST E-62 7/16	RICHARD BIENVENUE	1	N	FB SPIKE 0800	FB SPIKE 2200
SKIDG FAIRBANKS CONST E-63 7/15	RUSSEL CAMP	1	N	FB SPIKE 0800	FB SPIKE 2200
TFLD	STEVEN KEMERY 7/18	1	N	FB SPIKE 0800	FB SPIKE 2200
FOBS	EDWIN BECKER 7/23	1	N	FB SPIKE 0800	FB SPIKE 2200
FOBS	DAVID LATTMER 7/23	1	N	FB SPIKE 0800	FB SPIKE 2200
EMT (IMS-M)	DOUGLAS GREG 7/17	1	N	FB SPIKE 0800	FB SPIKE 2200
EMT (IMS-T)	DAVID POXLEITNER	1	N	FB SPIKE 0800	FB SPIKE 2200
SOFR	TOM DAER 7/16	1	N	FB SPIKE 0800	FB SPIKE 2200

7. Control Operations
 Hold fire north of Quarry Rd from C/F division break to F/L division break at Quarry/Manchu Rd. Mop up spot fires on south side of Quarry Rd. Mop up fire line to 100 feet. Patrol for spot fires that may cross Quarry Rd to prevent fire spread to the south.

8. Special Instructions
 ALL LINE ORDERS WILL BE ORDERED THROUGH 'FIREBIRD SPIKE'
 When observable ordnance are encountered, leave them intact, **DO NOT TOUCH**, contact DIVS and Range Control.
 When observable cultural resources are encountered, leave them intact and document location. Notify READ.
 Only aviation resources will be used within impact areas, except on hardened roads coordinated with military Explosive Ordnance Disposal (EOD) range control personnel. 1 mile buffer added to limited entry area.
 Note location of damaged electrical infrastructure and notify DIVS.

9. Division/Group Communications Summary

Function	Frequency - RX	Frequency - TX	Tone	System	Channel	System	Channel
Command	168.1000N	170.4500N	123.0	NIFC	1		
Tactical	168.0500N	168.0500N		NIFC	4		
Logistics							
Air to Ground	169.1500N	169.1500N		NIFC	12		

Prepared by (Resource Unit Leader) MELODY FOUNTAIN	Approved by (Planning Section Chief) 	Date Prepared 07/12/13	Time Prepared 1310
--	--	----------------------------------	------------------------------

Division Assignment List	1. Branch	2. Division/Group Firebird Spike Staging
---------------------------------	-----------	--

3. Incident Name MID Stuart Creek 2	4. Operational Period 07/13/13 Saturday DAY Shift 0800 - 2200
--	--

5. Operations Personnel

Operations Chief	STEVE PARR / JOE REYES	Division/Group	
Operations Chief	KIRKPATRICK (t) / SHINDELAR (t)	Air Attack Supervisor	RUSSELL GRIPP
Branch Director		Safety Officer	JENNIFER BOYD / D. MCKELVEY (t)

6. Resources Assigned this Period

Strike Team/Task Force/ Resource Designator	Leader	7/19	Num of Pers.	Trans. Y/N	Drop Off PT./Time	Pick Up PT./Time
STAM	KELLY HELGET	7/19	1	N	FB SPIKE 0800	FB SPIKE 2200
DOZER SMALLWOOD E-261 7/22	CARL BENSON		1	N	FB SPIKE 0800	FB SPIKE 2200
WT HQ TRANSPORTATION E-226	JEREMY WARWICK		1	N	FB SPIKE 0800	FB SPIKE 2200
TRANSPORT HUBBARD E-239				N	FB SPIKE 0800	FB SPIKE 2200
TRANSPORT FAIRBANKS E-108				N	FB SPIKE 0800	FB SPIKE 2200
TRANSPORT E-204				N	FB SPIKE 0800	FB SPIKE 2200
TRANSPORT ELBERRY E-291				N	FB SPIKE 0800	FB SPIKE 2200
EMTP	TABITHA HUGHES	7/20	1	N	FB SPIKE 0800	FB SPIKE 2200
EMT	TERRI BERRIE	7/20	1	N	FB SPIKE 0800	FB SPIKE 2200
RANGE CONTROL EQUIPMENT	GREG SWALLOWS				FB SPIKE 0800	FB SPIKE 2200
DOZERS RC-1,RC-2,RC-3,RC-4,RC-5					FB SPIKE 0800	FB SPIKE 2200
FECONS RC-8					FB SPIKE 0800	FB SPIKE 2200
BOBCAT RC-6					FB SPIKE 0800	FB SPIKE 2200
GRADER RC-3					FB SPIKE 0800	FB SPIKE 2200
DUMP TRUCK RC-7 / TRAILER RC-11					FB SPIKE 0800	FB SPIKE 2200
SUSV RC-12					FB SPIKE 0800	FB SPIKE 2200
HUMMV RC-13,RC-14,RC-15					FB SPIKE 0800	FB SPIKE 2200

7. Control Operations
 Notify operations or branches as resources become available. Resources to remain available to STAM for assignment to line when ordered.

8. Special Instructions
 ALL LINE ORDERS WILL BE ORDERED THROUGH 'FIREBIRD SPIKE'

When observable ordnance are encountered, leave them intact, DO NOT TOUCH, contact DIVS and Range Control.
 When observable cultural resources are encountered, leave them intact and document location. Notify READ.
 Only aviation resources will be used within impact areas, except on hardened roads coordinated with military Explosive Ordnance Disposal (EOD) range control personnel. 1 mile buffer added to limited entry area.

9. Division/Group Communications Summary
--

Function	Frequency - RX	Frequency - TX	Tone	System	Channel	System	Channel
Command	168.1000N	170.4500N	123.0	NIFC	1		
Tactical							
Logistics							
Air to Ground	169.1500N	169.1500N		NIFC	12		

Prepared by (Resource Unit Leader) MELODY FOUNTAIN	Approved by (Planning Section Chief) <i>[Signature]</i>	Date Prepared 07/12/13	Time Prepared 1310
---	--	---------------------------	-----------------------

16

AIR OPERATIONS SUMMARY
PREPARED BY: Jason Nava, AOB
DATE/TIME PREPARED: 7/12/2013 2000 hrs.

1. INCIDENT NAME: Stuart Creek # 2
2. OPERATIONAL PERIOD DATE: 7/13/2013
START TIME: 1000
END TIME: 2400
SUNRISE: 0401
SUNSET: 1147

3. REMARKS (Safety Notes, Hazards, Air Operations, Special Equipment, etc.): 150' Tower erected at Bravo 2
FIXED WING BE AWARE OF HELIBASE LOCATION
12 HOUR DUTY DAY RESTRICTIONS FOR TANKERS STARTING
 LADD tower control is operational at this time-use caution with in/out traffic
 Assume roads have wires
 Range Control Freq 125.300, Military Aircraft only in the Impact Zone, Use caution when smoke is heavy and visibility is limited, Medivac Hospital freq 155.160

4. Medivac C-GIRZ Hoist Available request
5. TFR: TFR 3/8848 in place. Polygon shape. At and below 5000 feet MSL.

6. PERSONNEL

Phone	7. FREQUENCIES	AM	FM
(949) 812-8702	AIR/AIR FW: BRIEFING	124.2500 132.0250	
(949) 616-4226	AIR/AIR RW:	123.1500	UYT Blue: 166.875 DECK: 163.100
	AIR/GROUND:		Primary 169.1500 Secondary 166.6750

8. FIXED-WING #Available/Type/Make-Model/FAA N# / & Bases
 Airtankers: T-152, T-155, T-142
 Scoopers: 264,267,885,891,262
 Available at LADD, order direct through UYT Dispatch

ATGS: Russ Grip
ATGS: Dean Thornberry
AFS Helibase: Tom Schmidt

HEB 1: Jesse Best 036

Deck:
UYT

ATGS Aircraft:
 Commander N848CE,
 Commander 1010F,

9. HELICOPTERS (Use Additional Sheets As Necessary)

FAA N#	T Y	MAKE	BASE	AVAIL	START	REMARKS	FAA N#	T Y	MAKE/MODEL	BASE	AVAIL	START	REMARKS
	1	Chinook, U.S. Army	LADD	1000	1100	Fly reservation only	*57ISC	2	Bell 212	FIRE BIRD	1000	1030	
	1	Chinook, U.S. Army	LADD	1000	1100	Fly reservation only	516LE	3	Bell 206L3 907-750-6620	LADD	1000	1030	On loan
16920	1	Blackhawk, U.S. Army	LADD	1000	1100	Fly reservation only	*767H	3	Bell 206L4	FIRE BIRD	0900	0930	PSD equipped with operator
	2	Bell 212	Firebird	1100	1130	On loan	*911CV	3	B-3 A-Star	LADD	1000	1030	AA platform A-8
*CGIRZ	2	Bell 212	Firebird	1000	1030	With 8 person crew	*97HJ	2	Bell 205	FIRE BIRD	0900	0930	RAP

399EH	2	Bell 212	LADD	1000	1030	AFS													

INCIDENT RISK ANALYSIS (ICS 215a)

DIV	HAZARDOUS ACTIONS / CONDITIONS	MITIGATIONS / WARNINGS / REMEDIES
ALL	LCES	<ul style="list-style-type: none"> • Difficult terrain to post lookouts • Use air attack when necessary • Maintain situational awareness
ALL	RAIN	<ul style="list-style-type: none"> • Roads in the fire area can get very slick after wetting rains • Slow down and use extreme caution • 2wd vehicles not recommended on non-graveled roads.
ALL	UNEXPLODED ORDNANCE (UXO)	<ul style="list-style-type: none"> • Recognize-Retreat-Report • DO NOT PICK UP OR TOUCH • Avoid radio transmissions near UXO • Withdrawal to a safe distance • Flag or Identify area where object is located • Deny entry until Ordnance Disposal personnel arrive • Report to you supervisor • All personnel must have UXO training prior to work assignment
ALL	AVIATION	<ul style="list-style-type: none"> • Clear personnel out of target area prior to retardant or bucket drops. • Get clear of dead snags, tops, limbs in drop area. • Working in an area covered by wet retardant should be done with caution due to slippery surfaces.
ALL	FIRE BEHAVIOR	<ul style="list-style-type: none"> • Buildup Index (BUI) values have risen rapidly, well above thresholds for crown fire in spruce, and intense burning in tundra fuels. • Monitor current weather conditions and forecasts. Make sure all personnel receive thorough briefings every shift. • Maintain adequate escape routes and safety zones. Advise all personnel if these are compromised or changed. Set trigger points when appropriate. • Adhere to 10 Std Orders, mitigate 18 situations. • Maintain Situational Awareness.
ALL	FATIGUE	<ul style="list-style-type: none"> • Be alert for signs of fatigue and take breaks as necessary. • Maintain 2:1 work/rest ratio. • Monitor incoming resources for level of fatigue. • Be aware of fatigue associated with sunrise/sunset if from out of state
ALL	HYDRATION	<ul style="list-style-type: none"> • Drinking water before, during and after shifts, up to 1.5 gal. per shift. • Be alert for signs of heat stress in yourself and others.
ALL	ATV USE	<ul style="list-style-type: none"> • Operators must have proper PPE suitable for the vehicle • Only carded and qualified operators • Ensure proper Safety briefings. • Provide daily equipment inspections.
ALL	INDIRECT ATTACK	<ul style="list-style-type: none"> • Extra care with situational awareness due to difficulty in locating lookouts • Carefully monitor weather watching for decreasing RH values • Use lookouts as much as possible/practical in this terrain • Have escapes routes planned and make them known • Ensure communications with your supervisor
ALL	BOAT SAFETY	<ul style="list-style-type: none"> • Vessels must only be operated by qualified personnel • All passengers must have pre trip safety briefing • PFDs worn at all times & worn correctly
ALL	STRUCTURE DEFENSE	<ul style="list-style-type: none"> • Base all actions on current and expected fire behavior • Ensure escape routes or safety zones prior to arrival of fire • Avoid parking under power lines

ALL	Hygiene	<ul style="list-style-type: none"> • Prolonged spike camps are always at risk for Camp Crud • Wash hands after each bathroom visit and before eating. • Keep camp area clean and free of garbage. • Thoroughly wash shared cooking pots and utensils. • Get hand sanitizer from medical to use when away from washing stations. • 	
ALL	WILDLIFE-BEAR-MOOSE	<ul style="list-style-type: none"> • Bears are the Most Dangerous when: You encounter sow with cubs. They feel threatened. You are obstructing their path .You encounter their den, feeding area or trail. • Safety in Numbers: Travel with someone else and avoid hiking at night. Stock animals seem to be advantageous to travel with. • DO NOT RUN: When you run you may look like prey to the bear. • Do not threaten the bear and force it to fight back. • Allow the bear a way out with dignity. • Pretend you are not afraid. <p>Avoid sows with cubs when at all possible</p> <ul style="list-style-type: none"> • Back away slowly, but deliberately, in the direction from which you came and at a light angle so that you are moving across her vision. Bear depth perception is poor and if you move directly backwards, it may look like you are moving towards her. • Moose: Stay Back give them their space especially cows w/ calf's, moose have poor eyesight, if charged step behind a tree or get out of sight. 	
INCIDENT NAME: Stuart Creek 2 ICS 215a		DATE PREPARED: <p style="text-align: center;">July 12th, 2013</p> TIME PREPARED: 1100 hrs	OPERATIONAL PERIOD 0800-2200 July 13, 2013 Prepared by J.Boyd

INCIDENT RADIO COMMUNICATIONS PLAN		Incident Name STUART CREEK 2 AK-MID-000280		Date/Time Prepared 07/12/13		Operational Period Date/Time DAY & NIGHT SHIFT 07/13/13			
Only frequencies listed on this 205 are authorized for use on this incident.				Hand programmers accept all responsibility for the use of unauthorized frequencies.					
Ch #	Function	Channel Name	Assignment	RX Freq N or W	RX Tone	TX Freq N or W	TX Tone	Mode	Remarks
1	COMMAND	CMD 1	BRANCH III	168.1000N	123.0	170.4500N	123.0	A	POLE HILL
2	COMMAND	CMD 2	BRANCH III	170.1000N		162.1625		A	LINKED TO BLM-UJT-FAIRBANKS
3	COMMAND	CMD 3	BRANCH I	170.0125N	123.0	165.2500N	123.0	A	
4	TACTICAL	TAC 1	DIVISION A / S / F	168.0500N		168.0500N		A	
5	TACTICAL	TAC 2	DIVISION R / K	168.2000N		168.2000N		A	
6	TACTICAL	TAC 3	DIVISION L	166.7250N		166.7250N		A	
7	TACTICAL	TAC 4	DIVISION M / B / C	168.2500N		168.2500N		A	
8	COMMAND	CMD 4	ICP	170.3625N	123.0	163.3875N	123.0	A	STUART CREEK ICP
9									
10	TACTICAL	TAC 5	DIVISION P	166.7750N		166.7750N		A	STATE TACTICAL 2
11	TACTICAL	TAC 6	STRUCTURE GROUP	159.3750N		159.3750N		A	STATE TACTICAL 1
12	AIR TO GROUND	A/G 1	A/G TACTICAL & LOGISTICAL	169.1500N		169.1500N		A	
13	AIR TO GROUND	A/G 2	A/G ROTOR	166.6750N		166.6750N		A	
14	URGENT AIR CONTACT	AIR GUARD	ALL DIVISIONS	168.6250N		168.6250N	110.9	A	USE ONLY FOR URGENT AIRCRAFT CONTACT, USE TONE 1
15									
16	URGENT AIR CONTACT	AIR GUARD	ALL DIVISIONS	168.6250N		168.6250N	110.9	A	USE ONLY FOR URGENT AIRCRAFT CONTACT, USE TONE 1

Prepared by

Kody Kerwin

Kody Kerwin, COML CIIMT #1

S 205 - 2007H

MODE A - ANOLOG, D - DIGITAL

Incident Location
North Pole, AK LAT: N 64 45.0815' LONG: W 147 20.8597'

MEDICAL PLAN 206 ICS	1. INCIDENT NAME Stuart Creek 2	2. DATE PREPARED July 12, 2013	3. TIME PREPARED 2000	4. OPERATIONAL PERIOD July 13, 2013 0800-2200
--------------------------------	------------------------------------	-----------------------------------	--------------------------	---

5. INCIDENT MEDICAL AID STATIONS

MEDICAL AID STATIONS	LOCATION	PARAMEDICS	
		YES	NO
Firebird Camp	Firebird Assault Strip	X	
Line EMT's as assigned	Assigned Divisions	X	X
North Pole Base	North Pole Elementary School		X

6. TRANSPORTATION

A. AMBULANCE SERVICES

NAME	LOCATION	PHONE	PARAMEDICS	
			YES	NO
Eielson AFB	AFB	911 or (907)356-5551	X	
Steese FD Ambulance (Pleasant Valley Area)	Pleasant Valley, AK	911 or (907)450-6507	X	

B. INCIDENT AMBULANCES

NAME	LOCATION	PARAMEDICS	
		YES	NO
Ft Wainwright FD Ambulance (ground)	Branch III(Day) Firebird Spike(Night) (907)529-9905	X	

C. MEDIVAC SERVICES

NAME	LOCATION	PHONE	Hoist	ALS	BLS
Evergreen Medivac (Type 2 Helicopter)	Ft Greeley, Delta Junction, AK	(907)353-9170 (907)356-5551	X	X	
Guardian Flight (Fixed wing)	Fairbanks	(907)356-5551		X	

7. HOSPITALS

NAME	ADDRESS	TRAVEL TIME		PHONE	HELIPAD		BURN CTR	
		AIR	GRND		YES	NO	YES	NO
Fairbanks Memorial 64*49.90' x 147*44.50' Contact Freq: 155.160	1650 Cowles Street, Fairbanks, AK 99701	30 min	90 min	(907)458-5556 (907)353-9170	X			X
Anchorage-Providence Hosp 61*11.62' x 149*49.42'	3200 Providence Dr Anchorage, AK 99504	2 hrs	6 hrs	(907)212-3111	X			X
Harborview Burn Center 47* 36.190 x 122*19.500	325 9th Ave Seattle, WA 98104	4hrs		(206) 284-2876	X		X	

8. MEDICAL EMERGENCY PROCEDURES

LINE MEDICAL EMERGENCY:

Crew Supervisor to contact Division Supervisor/Operations with patient complaint/condition and location. Division Supervisor/Operations contacts communications:

- Division Supervisor/Operations to use "injury or incident communication protocol" on next page
- Division Supervisor/Operations will run medical emergency on command channel
- Communications contacts MEDL via radio or cell phone and clears command channel for emergency traffic
- Medical Unit Leader will:
 1. Have communications dispatch ground/air transport resources
 2. Develop primary and contingency transport plan
 3. Notify Safety, Logistics, operations and Air ops

SPIKE CAMP MEDICAL EMERGENCY DAY:

Notify Communications of camp emergency
Communications contacts Medical Unit with patient complaint/condition and location.

- Medical Unit contacts:
 - * Safety, Logistics and operations
- Medical Unit Leader will:
 1. Have communications dispatch ground/air transport resources
 2. Develop primary and contingency transport plan

SPIKE CAMP MEDICAL EMERGENCY NIGHT:

Notify Facilities and/or Medical manager at spike camp.
Facilities and/or Medical manager will contact Communications.

- Communications contacts MEDL by Cell phone
- Medical Unit Leader contacts:
 - * Safety, Logistics and operations
- Medical Unit Leader will:
 1. Dispatch ground/air transport resources
 2. Develop primary and contingency transport plan

206 ICS	9. PREPARED BY: (Medical Unit Leader) Matthew Lipson MEDL <i>[Signature]</i>	10. REVIEWED BY: (Safety Officer) Jennifer Boyd SOFI <i>[Signature]</i>
----------------	---	--

Injury or Incident Communications Protocol

DECLARE: Medical Emergency or Non-emergency Medical transport

Best transport method: Ambulance Helicopter Vehicle

Location _____

Situation _____

Any special equipment required _____

Number of injured _____ Type of injuries _____

Closest pick up point (DP, Helispot) _____

LOC _____ Resp. _____ Pulse _____ BP _____ Weight _____

Injury _____

Medical History/Allergies _____

Air Transportation Triage

	Ground or Air Ambulance to Hosp.	Transport to Med Unit
Mechanism	Hit by a falling tree or large branch Fall of 10' or more Insect bite with shortness of breath Signs of heat stroke (hot, dry, disoriented) Burn Injury greater than 1% body area	Minor dehydration Cut or laceration with bleeding controlled Minor bites and Stings Minor burns
Area Injured	Significant Blunt or Penetrating Trauma to Head, Neck, Chest, Abdomen or pelvis Any Arm or Leg fracture above the Joint	Minor blunt trauma Minor penetrating trauma Extremity sprains and strains Simple fracture below elbow or knee
Symptoms	Disoriented Chest Pain <u>or</u> Shortness of Breath Weak or absent radial pulse Pale, cold and sweating	Alert and oriented No shortness of breath Good pulses

Medivac Sites

H-1	64 46.275 N	146 53.233 W
H-2	64 40.768 N	146 48.229 W
H-3	64 52.552 N	146 46.660 W
H-4	64 47.591 N	146 55.300 W
H-5	64 38.415 N	146 40.352 W
H-6	64 42.647 N	146 54.695 W

If air or ground ambulance is DELAYED:

Package and transport patient to rendezvous with Ambulance. Re-route EMS helicopter to rendezvous point as appropriate.

If Declaring an "Incident within the Incident"

The closest DIVS will respond to manage the incident. They are responsible for giving an accurate size up, ensuring scene safety, setting priorities and initiating an appropriate response. The closest Safety Officer and Line EMS will respond to the scene to assist the Branch Director or DIVS. Secure site and begin initial investigation when situation is stabilized.



Human Resource Message

YOUR RIGHTS AND RESPONSIBILITIES

Rights:

- ❑ To work in a harassment-free environment where people treat one another with dignity, equity, courtesy and respect.
- ❑ To say "no" to unwelcome advances or requests for favors.
- ❑ To file complaints or grievances through appropriate avenues.

Responsibilities:

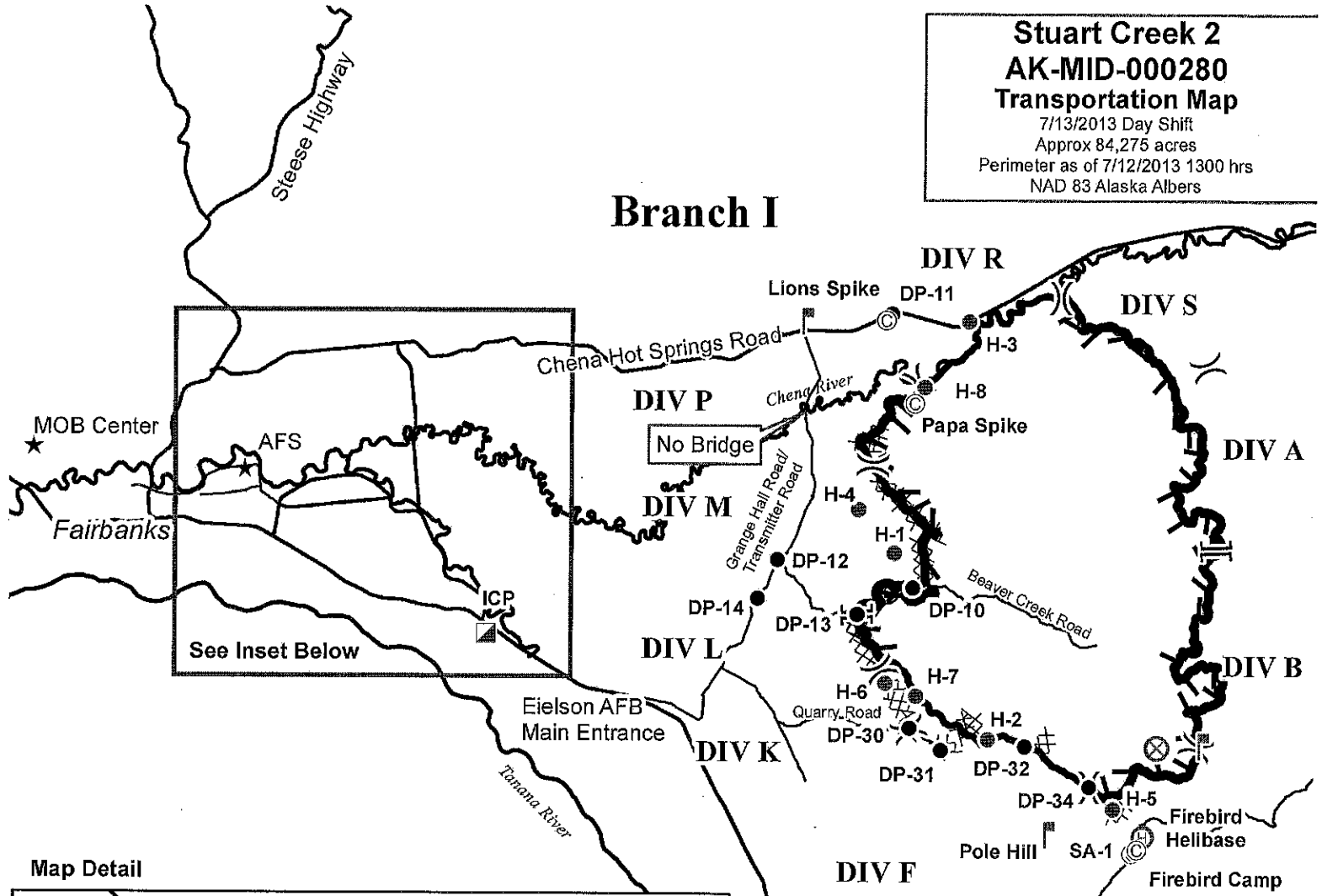
- ❑ To behave in a manner that treats people with dignity, equity, courtesy and respect.
- ❑ To abide by agency and incident ethics and conduct regulations.
- ❑ To report any harassment or other inappropriate behavior you observe or experience

Incident Human Resource Specialist is: Michael Donch

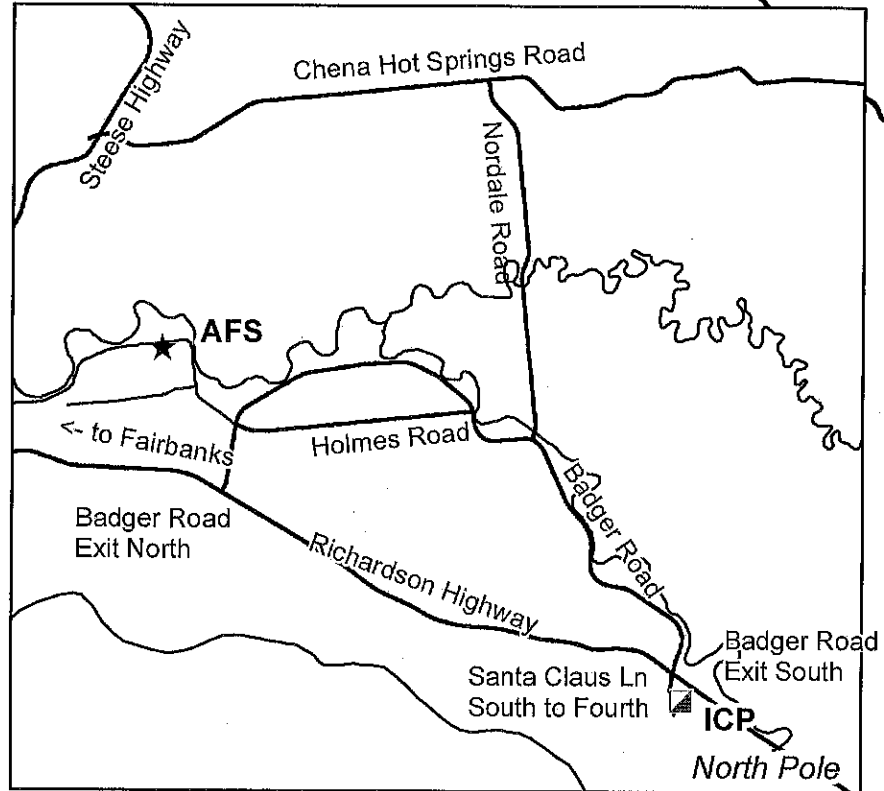
Stuart Creek 2
AK-MID-000280
Transportation Map

7/13/2013 Day Shift
 Approx 84,275 acres
 Perimeter as of 7/12/2013 1300 hrs
 NAD 83 Alaska Albers

Branch I



Map Detail



To ICP: Take Badger South/Santa Claus Lane exit and drive south through rotaries to Fourth Avenue. North Pole Elementary School is at corner of Fourth and Snowman.

To Chena Hot Springs Road: Take Badger Road to Nordale, and follow Nordale north to Chena Hot Springs Road.

⊙	Camp
⊕	Staging Area
●	Drop Point
⊗	Fire Origin
⊕	Helibase
●	Hellspot
⌚	Lookout
)	Division
	Branch
⊗⊗	Completed Dozer Line
—	Completed Line
H -	Hand Line
┌	Uncontrolled Fire Edge
★	Other POI
—	Major Roads
—	Secondary/Military Roads
—	Major Rivers

