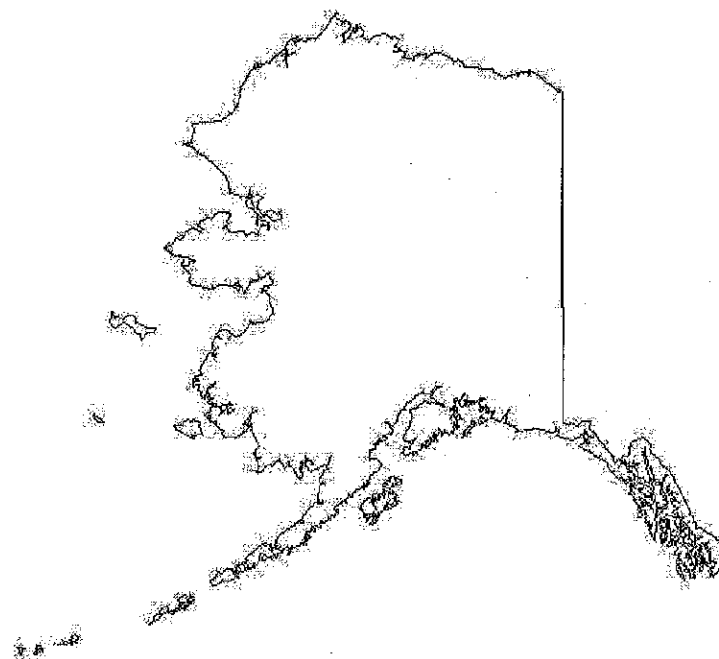


STUART CREEK 2 FIRE


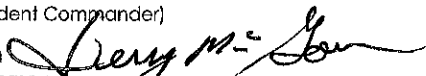
AK-MID-000280



July 17th, 2013
Day 0800 - 2200

Meeting Schedule

0800 Briefing @ Lion, Firebird Spike
0830 Radio Briefing
1100 Cooperators Meeting @ North Pole
1800 Planning Meeting @ North Pole

INCIDENT OBJECTIVES	1. Incident Name Stuart Creek 2	2. Date Prepared 7-16-13	3. Time Prepared 2300
4. Operational Period 7-17-13 0800-2200 hours			
5. General Control Objectives for the Incident (include alternatives) <u>Control Objectives:</u> Keep Fire: - North of the Salcha River. - East of a line along the Transmitter Road, north to the Chena River and south along the Trans-Alaska Pipeline to the Salcha River. - West of the South Fork Chena River, south along eastern boundary of the Training Area, south to the Salcha River. - South of the Chena River. <u>Management Objectives:</u> - Provide for firefighter and public safety utilizing LCES, 10 / 18, and risk management from IRPG and required UXO briefings. - Protect military infrastructure, private residences, cabins, improvements and jurisdictional lands within and adjacent to the fire area. - Minimize or mitigate threats to known cultural resources by utilizing READs and/or archeologists. - Avoid application of retardant within 300 feet of stream channels and water ways. - Coordinate and communicate fire information with the public and all stakeholders. - Coordinate, develop and implement fire suppression repair. - Support local unit initial attack as requested.			
6. Weather Forecast for Period WEATHER: Mostly cloudy with a chance of showers. TEMPERATURES: 65 to 72 (0) MIN HUMIDITY: 50 to 60% (0) WINDS (EYE LEVEL): RIDGETOPS: West to Southwest 4 to 8 mph with gusts to 15 mph. SHELTERED VALLEYS: Light and variable winds.			
7. General Safety Message Power lines will be energized in Div C and Div F along the Johnson/Quarry Rd tomorrow Military will monitor for problems, line can be de-energized in approximately 30 minutes if issues arise. See attached for additional information			
8. Attachments (mark if attached)			
<input checked="" type="checkbox"/> Incident Objectives – ICS 202 <input checked="" type="checkbox"/> Division Assignment List – ICS 204 <input checked="" type="checkbox"/> Medical Plan - ICS 206 <input checked="" type="checkbox"/> Organization List - ICS 203 <input checked="" type="checkbox"/> Safety Message <input checked="" type="checkbox"/> Human Resource Message <input checked="" type="checkbox"/> Fire Weather Forecast <input checked="" type="checkbox"/> Incident Safety Analysis – ICS 215A <input checked="" type="checkbox"/> Camp Map <input checked="" type="checkbox"/> Fire Behavior Forecast <input checked="" type="checkbox"/> Air Ops Summary – ICS 220 <input checked="" type="checkbox"/> Transportation <input checked="" type="checkbox"/> Trainee Data Form <input checked="" type="checkbox"/> Communications Plan - ICS 205 <input checked="" type="checkbox"/> Unit Log – ICS 214			
9. Prepared by (Planning Section Chief) 		10. Approved by (Incident Commander) Jerry McGowan 	

ICS Form 203 ORGANIZATION ASSIGNMENT LIST		1. INCIDENT NAME Stuart Creek 2	2. DATE PREPARED 7-16-13	3. TIME PREPARED 1800
5. INCIDENT COMMAND STAFF		4. OPERATIONAL PERIOD (DATE/TIME) 7-17-13 0800-2200		
Position	Name	9. OPERATIONS SECTION		
INCIDENT COMMANDER	Jerry McGowan	CHIEF	Steve Parr / Joe Reyes	
DEPUTY		PLANNING OPS	Kathy Kirkpatrick (t)	
SAFETY OFFICER	Jennifer Boyd / Doug McKelvey (t)	DEPUTY OPS		
INFORMATION OFFICER	Hadley / Phelps / Gibbs (t)	a. BRANCH I		
LIAISON OFFICER	Steve Negro	BRANCH DIR	Linda Szczepanik / John Flores (t)	
HUMAN RESOURCE SPECIALIST	Michael Donch	GROUP		
6. AGENCY REPRESENTATIVES		DIVISION	M	Karen Scholl / Lakota Burwell (t)
AGENCY	NAME	DIVISION	N	James Snow
US Army	Col. Johnson	DIVISION	P	Dirk Giles / Matt Robinett (t)
US Air Force	Maj. Tutty	DIVISION	R	Matthew Corley / Jeff Cramer (t)
Eastern Area IARR	To / Oliver / Clark / Greaves	DIVISION	S	Tamer Young
Alaska State Parks	Ian Thomas	DIVISION	A	Bill Steers / Phil OoSahwe (t)
Alaska Fire Service	Randy Lenon	b. BRANCH III		
Fairbanks N.Star Borough	Dave Gibbs	BRANCH DIRECTOR	Ron Garcia	
Alaska DNR	Gordon Amundson	DIVISION	B/C/F	Kelley / Leusch / Holmes (t)
Alaska State Troopers	Capt. Barrick	DIVISION	K/L	Rick Marinelli / Dave DiSanto (t)
7. PLANNING SECTION		DIVISION		
CHIEF	Gary Montgomery / Christie Neill	DIVISION		
CHIEF	Tom Sivak	DIVISION		
RESOURCES UNIT	Fountain / Escalera / Schillinger	DIVISION		
SITUATION UNIT	Morelock / Yanagisawa / Johndreau (t)	DIVISION		
STRATEGIC OPS PLANNER		DIVISION		
DEMOBILIZATION UNIT	John Roberts	c. BRANCH -		
CTSP	Jonathan Wilson	FIREBIRD STG	STAGING	Kelly Helget
TNSP	Robert Rivelle			
FBAN / LTAN	Patton / St. Clair (t)			
IMET	Dan Byrd / Christan Cassell (t)			
GISS	Melanie Hans / James Roberts	d. AIR OPERATIONS BRANCH		
READ	Buzby / Rees	AIR OPERATIONS BR. DIR.	Jason Nava	
Range Control	(Day) Beck / (Night) Stepp	AIR TACTICAL GROUP SUP.	Russ Gripp	
8. LOGISTICS SECTION		AIR SUPPORT GROUP SUP	Lisa Cardoza	
CHIEF	Rich Davis	HELICOPTER COORDINATOR		
CHIEF	Jim Hogg	10. FINANCE/ADMINISTRATION SECTION		
a. SUPPORT BRANCH		CHIEF	Robbin Ekman	
SECURITY		CHEIF	Rene White	
SUPPLY UNIT	Jeff Carter	TIME UNIT	Glenda Lindsay	
FACILITIES UNIT	Tim Gardner	PERSONAL TIME	D. Pindell / M. Glover	
GROUND SUPPORT UNIT	Dave Trussell	COMPENSATION/CLAIMS UNIT	Lisa Dow (t)	
b. SERVICE BRANCH		COST UNIT	C. Rohrbach / R. Taylor (t)	
COMMUNICATIONS UNIT	Kody Kerwin	EQUIPMENT TIME	S. Tarvin / R. Madrid / C. Sisto	
COMMUNICATIONS MANG	Scott LaRue	PROCUREMENT	Debby Wessellius	
FOOD UNIT	Ken Haberl			
RECEIVING	Lori Cayo			
ORDERING	Mike Worford			
MEDICAL UNIT	Matt Lipson			
EQUIPMENT MANAGER	Davis Harsh / Rick Miller			
PREPARED BY (RESOURCES UNIT)				
Jason Schillinger				

CS Form 203 ORGANIZATION ASSIGMENT LIST		1. INCIDENT NAME Stuart Creek 2	2. DATE PREPARED 7-16-13	3. TIME PREPARED 1800																		
5. INCIDENT COMMAND STAFF AK Green Team Shadow		4. OPERATIONAL PERIOD (DATE/TIME) 7-17-13 0800-2200																				
<table border="1"> <thead> <tr> <th>Position</th> <th>Name</th> </tr> </thead> <tbody> <tr><td>INCIDENT COMMANDER</td><td>Tom Kurth</td></tr> <tr><td>DEPUTY</td><td></td></tr> <tr><td>SAFETY OFFICER</td><td>Tom Greiling</td></tr> <tr><td>INFORMATION OFFICER</td><td>Gary Lenhausen / Maureen Clark (t)</td></tr> <tr><td>LIAISON OFFICER</td><td></td></tr> <tr><td>HUMAN RESOURCE SPECIALIST</td><td></td></tr> </tbody> </table>		Position	Name	INCIDENT COMMANDER	Tom Kurth	DEPUTY		SAFETY OFFICER	Tom Greiling	INFORMATION OFFICER	Gary Lenhausen / Maureen Clark (t)	LIAISON OFFICER		HUMAN RESOURCE SPECIALIST		9. OPERATIONS SECTION						
Position	Name																					
INCIDENT COMMANDER	Tom Kurth																					
DEPUTY																						
SAFETY OFFICER	Tom Greiling																					
INFORMATION OFFICER	Gary Lenhausen / Maureen Clark (t)																					
LIAISON OFFICER																						
HUMAN RESOURCE SPECIALIST																						
		CHIEF	H. Smith / E. Sanford (t) / B. Peterson (t)																			
		PLANNING OPS																				
		DEPUTY OPS																				
6. AGENCY REPRESENTATIVES		a. BRANCH I																				
<table border="1"> <thead> <tr> <th>AGENCY</th> <th>NAME</th> </tr> </thead> <tbody> <tr><td>US Army</td><td>Col. Johnson</td></tr> <tr><td>US Air Force</td><td>Maj. Tutty</td></tr> <tr><td>Eastern Area IARR</td><td>To / Oliver / Clark / Greaves</td></tr> <tr><td>Alaska State Parks</td><td>Ian Thomas</td></tr> <tr><td>Alaska Fire Service</td><td>Randy Lenon</td></tr> <tr><td>Fairbanks N.Star Borough</td><td>Dave Gibbs</td></tr> <tr><td>Alaska DNR</td><td>Gordon Amundson</td></tr> <tr><td>Alaska State Troopers</td><td>Capt. Barrick</td></tr> </tbody> </table>		AGENCY	NAME	US Army	Col. Johnson	US Air Force	Maj. Tutty	Eastern Area IARR	To / Oliver / Clark / Greaves	Alaska State Parks	Ian Thomas	Alaska Fire Service	Randy Lenon	Fairbanks N.Star Borough	Dave Gibbs	Alaska DNR	Gordon Amundson	Alaska State Troopers	Capt. Barrick	BRANCH DIR		
AGENCY	NAME																					
US Army	Col. Johnson																					
US Air Force	Maj. Tutty																					
Eastern Area IARR	To / Oliver / Clark / Greaves																					
Alaska State Parks	Ian Thomas																					
Alaska Fire Service	Randy Lenon																					
Fairbanks N.Star Borough	Dave Gibbs																					
Alaska DNR	Gordon Amundson																					
Alaska State Troopers	Capt. Barrick																					
		GROUP																				
		DIVISION	M	Karen Schell / Lokota Burwell (t)																		
		DIVISION	N																			
		DIVISION	P	Dirk Giles / Matt Robinson (t)																		
		DIVISION	R	Robert Yeager / Jeff Cramer (t)																		
		DIVISION	S	Tamer Young / Randy Foland (t)																		
		DIVISION	A	David Bloemaker / Phil OoSahwe (t)																		
		b. BRANCH III																				
		BRANCH DIRECTOR																				
		DIVISION	F/C/B	Cameron Winfrey / Jon Holmes (t)																		
		DIVISION	L/K	John Glover																		
		DIVISION																				
		DIVISION																				
		DIVISION																				
		DIVISION																				
		DIVISION																				
		DIVISION																				
		DIVISION																				
7. PLANNING SECTION		c. BRANCH II																				
CHIEF		BRANCH DIRECTOR																				
CHIEF		DIVISION																				
RESOURCES UNIT		DIVISION																				
SITUATION UNIT		DIVISION																				
STRATEGIC OPS PLANNER		DIVISION																				
DEMOBILIZATION UNIT		DIVISION																				
CTSP		DIVISION																				
TNSP		DIVISION																				
FBAN / LTAN		DIVISION																				
IMET		DIVISION																				
GISS		DIVISION																				
READ		DIVISION																				
Range Control		DIVISION																				
<table border="1"> <tbody> <tr><td>Marsha Henderson</td></tr> <tr><td>Al Yanagisawa / Mike Butten (t)</td></tr> <tr><td>Adam Kohley</td></tr> <tr><td>Jennifer Barnes</td></tr> <tr><td>Bill Beach</td></tr> <tr><td>Robert Ziel / Tom St. Clair (t)</td></tr> <tr><td>Buzby / Rees</td></tr> <tr><td>(Day) Beck / (Night) Stepp</td></tr> </tbody> </table>		Marsha Henderson	Al Yanagisawa / Mike Butten (t)	Adam Kohley	Jennifer Barnes	Bill Beach	Robert Ziel / Tom St. Clair (t)	Buzby / Rees	(Day) Beck / (Night) Stepp	<table border="1"> <tbody> <tr><td>FIREBIRD STG</td></tr> <tr><td>STAGING</td></tr> <tr><td></td></tr> <tr><td></td></tr> <tr><td></td></tr> <tr><td></td></tr> </tbody> </table>	FIREBIRD STG	STAGING										
Marsha Henderson																						
Al Yanagisawa / Mike Butten (t)																						
Adam Kohley																						
Jennifer Barnes																						
Bill Beach																						
Robert Ziel / Tom St. Clair (t)																						
Buzby / Rees																						
(Day) Beck / (Night) Stepp																						
FIREBIRD STG																						
STAGING																						
8. LOGISTICS SECTION		d. AIR OPERATIONS BRANCH																				
CHIEF		AIR OPERATIONS BR. DIR.																				
CHIEF		AIR TACTICAL GROUP SUP.	Gary Mullen																			
<table border="1"> <tbody> <tr><td>Janet Ladd / Jerri Webster</td></tr> <tr><td>Karl Meitzner</td></tr> <tr><td>Rusty Hippchen / Will Hutto (t)</td></tr> </tbody> </table>		Janet Ladd / Jerri Webster	Karl Meitzner	Rusty Hippchen / Will Hutto (t)	AIR SUPPORT GROUP SUP																	
Janet Ladd / Jerri Webster																						
Karl Meitzner																						
Rusty Hippchen / Will Hutto (t)																						
a. SUPPORT BRANCH		HELICOPTER COORDINATOR																				
SUPPLY UNIT																						
FACILITIES UNIT																						
GROUND SUPPORT UNIT																						
b. SERVICE BRANCH																						
COMMUNICATIONS UNIT																						
COMMUNICATIONS MANG																						
FOOD UNIT																						
RECEIVING																						
ORDERING																						
MEDICAL UNIT																						
<table border="1"> <tbody> <tr><td>Jordan Halden</td></tr> <tr><td>Jim Hush</td></tr> <tr><td>Amber Rosser</td></tr> <tr><td>Jenn Northway</td></tr> <tr><td>Terry Solomon</td></tr> </tbody> </table>		Jordan Halden	Jim Hush	Amber Rosser	Jenn Northway	Terry Solomon																
Jordan Halden																						
Jim Hush																						
Amber Rosser																						
Jenn Northway																						
Terry Solomon																						
10. FINANCE/ADMINISTRATION SECTION																						
		CHIEF	Mari Witt																			
		CHEIF																				
		TIME UNIT																				
		PERSONAL TIME																				
		COMPENSATION/CLAIMS UNIT																				
		COST UNIT																				
		EQUIPMENT TIME																				
PREPARED BY (RESOURCES UNIT) Jason Schillinger																						



Stuart Creek #2 Fire Weather Forecast



FORECAST NO: 12
PREDICTION FOR: Wednesday 17 July 2013

NAME OF FIRE: Stuart Creek #2
UNIT: MID

SHIFT DATE: July 16th, 2013

Incident Meteorologist:
Dan Byrd
Christian Cassell (T)

FORECAST ISSUED: 2000 ADT July 16th, 2013

WEATHER DISCUSSION: Fast west to southwest flow will continue over the area through Thursday night. Numerous disturbances will move over the area, each bringing a chance of precipitation to the incident area. Temperatures will remain near normal and humidity values will stay above 40 percent through at least Thursday.

WEATHER FORECAST WEDNESDAY DAY SHIFT:

WEATHER: Mostly cloudy with a chance of showers.
TEMPERATURES: 65 to 72 (0)
MIN HUMIDITY: 50 to 60% (0)
WINDS (EYE LEVEL): RIDGETOPS: West to Southwest 4 to 8 mph with gusts to 15 mph. **SHELTERED VALLEYS:** Light and variable winds.
CHANCE OF WETTING RAINS: 20%
LAL: 1

WEATHER FORECAST WEDNESDAY NIGHT:

WEATHER: Mostly cloudy. A chance of showers.
MIN TEMPERATURES: 46 to 53
MAX HUMIDITY: 85 to 95%
WINDS (EYE LEVEL): RIDGETOPS: West 3 to 6 mph with gusts to 10 mph. **VALLEYS:** Light and variable.
CHANCE OF WETTING RAINS: 20%
LAL: 1

OUTLOOK FOR THURSDAY:

WEATHER: Mostly cloudy. A chance of showers.
TEMPERATURES: 63 to 70 (0)
MIN HUMIDITY: 50 to 60% (0)
WINDS (EYE LEVEL): RIDGETOPS: West to Southwest wind 4 to 8 mph with gusts to 15 mph.
SHELTERED VALLEYS: Light and variable.
CHANCE OF WETTING RAINS: 40%
LAL: 1

EXTENDED FORECAST FOR FRIDAY through SATURDAY:

Generally mostly cloudy skies with a good chance of showers continuing through Friday and Saturday. Temperatures should be near normal in the mid-60s to lower 70s, with minimum RHs remaining above 40 percent.

Sunrise Wednesday: 0359 AKDT Sunset Wednesday: 2352 AKDT
Monday Observation summary at Stuart Creek RAWS (midnight through 1800):
Max T: 69
Min RH: 58
Max Wind: WSW 10 G 18 mph
Rain Accumulation (0000 – 2000): trace

FIRE BEHAVIOR FORECAST

FORECAST NUMBER: # 15	TYPE OF FIRE: Wildfire
FIRE NAME: Stuart Creek #2	OPERATIONAL PERIOD: Day – July 17, 2013
DATE ISSUED: 07/16/13	TIME ISSUED: 2000 hrs
UNIT: BLM-AFS	SIGNED: Tom St. Clair FBAN(T)

WEATHER SUMMARY:

High Temperature: 65 to 72 degrees Minimum RH: 50-60% Winds (Eye-Level): RIDGETOPS: West to Southwest 4 to 8 mph with gusts to 15 mph. SHELTERED VALLEYS: Light and variable winds.

See attached Fire Weather Forecast for more details.

Take weather observations, and call in hourly to Communications. Please include location and elevation.

FIRE BEHAVIOR

GENERAL:

Cooling and dampening trend continues. Any rain received will further dampen fire spread rates so long as the clouds persist. Deeper duff and sheltered areas will continue to retain heat.

Divisions B, C, F: Expect little to no fire movement in areas retaining heat. Fire will generally fester in place today where it has been the last couple of days.

Divisions K, L, M, N, and P: Fire will be reduced to smoldering and low flame lengths in areas where heavy fuels in large concentrations retain heat. Any fire movement will be minimal.

Division R: Smoldering in isolated areas.

Division S, A: Fire growth will be minimal and will require an established heat source to dry fuels ahead of it as long as RH remains above 40%. Areas retaining heat underneath spruce trees may allow for isolated torching but spot fire potential is minimal. Heat will persist in the duff and continue to smolder with limited creeping spread in some areas.

FUELS:

Manchu RAWS Predicted Fire Weather Indices FFMC 87.5, DMC 70.2, DC 376.9, ISI 6.7, BUI 95.8, FWI 23.2

Continuous Black Spruce worst case scenario:

FL Head: Up to 4'

ROS Head: Up to 18 ch/hr

Majority of the fuels around the fire and within

Spruce/Hardwood mix worst case scenario:

FL Head: Up to 3'

ROS Head: Up to 6 ch/hr

Spotting distance: .2 miles

Probability of ignition: 5%

AIR OPERATIONS:

Watch for gusty winds near showers.

SAFETY

Initial Spread Index (ISI): Fires tend to spread on the ground surface until values of about 10 are exceeded at which time the onset of crowning can be expected. Extreme fire behavior is generally associated with values in excess of 20, depending on the BUI, Severe fires of major conflagrations occur when 70 is approached, a level of fire danger severity that is rarely exceeded.

Division Assignment List	1. Branch I	2. Division/Group M
---------------------------------	-----------------------	-------------------------------

3. Incident Name MID Stuart Creek 2	4. Operational Period 07/17/13 Wednesday DAY Shift 0800 - 2200
--	---

5. Operations Personnel

Operations Chief	STEVE PARR / JOE REYES	Division/Group	KAREN SCHOLL 7/25/ BURWELL (t)
Operations Chief	KIRKPATRICK (t)	Air Attack Supervisor	RUSSELL GRIPP
Branch Director	SZCZEPANIK / FLORES (t)	Safety Officer	JENNIFER BOYD / D, MCKELVEY (t)

6. Resources Assigned this Period

Strike Team/Task Force/ Resource Designator	Leader	Num of Pers.	Trans. Y/N	Drop Off PT./Time	Pick Up PT./Time
CREW T2IA MHR # 1 7/20	PAUL SMITH	20	N	FB SPIKE 0800	FB SPIKE 2200
W/T 85 EIELSON AFB		1	N	FB SPIKE 0800	FB SPIKE 2200
W/T CHIPS 1 E-18	ZACK STOCKTON	1	N	FB SPIKE 0800	FB SPIKE 2200
W/T MIDSTATE	BRIAN ARMSTRONG	1	N	FB SPIKE 0800	FB SPIKE 2200
SKIDGINE - SOFT TRACK E- 61	JOSH COVEY	1	N	FB SPIKE 0800	FB SPIKE 2200
SKIDGINE - SOFT TRACK E-297	CALEB COVEY	1	N	FB SPIKE 0800	FB SPIKE 2200
TFLD	EVAN ADSIT 7/26	1	N	FB SPIKE 0800	FB SPIKE 2200
TFLD (t)	MARCUS SWAN 7/22	1	N	FB SPIKE 0800	FB SPIKE 2200
TFLD (t)	SETH REEDY 7/25	1	N	FB SPIKE 0800	FB SPIKE 2200
EMT (IMS-M)	MILLIE CARSON 7/19	1	N	FB SPIKE 0800	FB SPIKE 2200
EMT (IMS-T)	PATRICK TOLAND 7/19	1	N	FB SPIKE 0800	FB SPIKE 2200
SOFR	CARY BROWN 7/18	1	N	FB SPIKE 0800	FB SPIKE 2200

7. Control Operations
Mop up direct dozer and hand line from Branch break at DP 13 on Beaver Creek Rd north to Sensor 2 to keep fire from spreading west. Plumb fire line with pumps and hose. Mop up fire edge to 100 feet. Patrol line and grid division green for spot fires; extinguish and mop up.

8. Special Instructions
ALL LINE ORDERS WILL BE ORDERED THROUGH 'FIREBIRD SPIKE'
When observable ordnance are encountered, leave them intact, **DO NOT TOUCH**, contact DIVS and Range Control.
When observable cultural resources are encountered, leave them intact and document location. Notify READ.
Only aviation resources will be used within impact areas, except on hardened roads coordinated with military Explosive Ordnance Disposal (EOD) range control personnel. 1 mile buffer added to limited entry area.
Note location of damaged electrical infrastructure and notify DIVS. -FT WAINWRIGHT AMBULANCE WILL BE @ DP 12 OR 14-
Review pump safety.

9. Division/Group Communications Summary

Function	Frequency - RX	Frequency - TX	Tone	System	Channel	System	Channel
Command	170.0125N	165.2500N	123.0	NIFC	3		
Tactical	159.3750N	159.3750N		NIFC	11		
Logistics							
Air to Ground	169.1500N	169.1500N		NIFC	12		

Prepared by (Resource Unit Leader) MELODY FOUNTAIN	Approved by (Planning Section Chief) <i>[Signature]</i>	Date Prepared 07/16/13	Time Prepared 2000
---	--	---------------------------	-----------------------

Division Assignment List	1. Branch I	2. Division/Group N
---------------------------------	-----------------------	-------------------------------

3. Incident Name MID Stuart Creek 2	4. Operational Period 07/17/13 Wednesday DAY Shift 0800 - 2200
--	---

5. Operations Personnel

Operations Chief	STEVE PARR / JOE REYES	Division/Group	JAMES SNOW 7/17
Operations Chief	KIRKPATRICK (t)	Air Attack Supervisor	RUSSELL GRIPP
Branch Director	SZCZEPANIK / FLORES (t)	Safety Officer	JENNIFER BOYD / D. MCKELVEY (t)

6. Resources Assigned this Period

Strike Team/Task Force/ Resource Designator	Leader	Num of Pers.	Trans. Y/N	Drop Off PT./Time	Pick Up PT./Time
CREW T2IA MOF # 2 7/20	WILLIAM COBER	20	N	FB SPIKE 0800	FB SPIKE 2200
DOZ BLACK GOLD E-207 7/20	ROBERT PACKER	1	N	FB SPIKE 0800	FB SPIKE 2200
DOZ HOWARD 34 E-265	HOWARD/ BORASH	2	N	FB SPIKE 0800	FB SPIKE 2200
DOZ STONE BOY E-294	SEIBOLD/ FORTUNE	2	N	FB SPIKE 0800	FB SPIKE 2200
HEQB	CHRIS YORK 7/26	1	N	FB SPIKE 0800	FB SPIKE 2200
TFLD	JOEL SATHER 7/22	1	N	FB SPIKE 0800	FB SPIKE 2200
TFLD (t)	ISAAC SOLOMON 7/21	1	N	FB SPIKE 0800	FB SPIKE 2200
EMT (IMS-M)	MILLIE CARSON 7/19	1	N	FB SPIKE 0800	FB SPIKE 2200
EMT (IMS-T)	PATRICK TOLAND 7/19	1	N	FB SPIKE 0800	FB SPIKE 2200
SOFR	DON GARRINGER 7/17	1	N	FB SPIKE 0800	FB SPIKE 2200

7. Control Operations
Mop up direct dozer and hand line from M/N division break at Sensor 2, north to Horner Creek to keep fire from spreading west. Plumb fire line with pumps and hose. Mop up fire edge to 100 feet. Grid division green for spot fires, extinguish and mop up.

8. Special Instructions
ALL LINE ORDERS WILL BE ORDERED THROUGH 'FIREBIRD SPIKE'
When observable ordnance are encountered, leave them intact, **DO NOT TOUCH**, contact DIVS and Range Control.
When observable cultural resources are encountered, leave them intact and document location. Notify READ.
Only aviation resources will be used within impact areas, except on hardened roads coordinated with military Explosive Ordnance Disposal (EOD) range control personnel. 1 mile buffer added to limited entry area.
Review pump safety.

9. Division/Group Communications Summary							
Function	Frequency - RX	Frequency - TX	Tone	System	Channel	System	Channel
Command	170.0125N	165.2500N	123.0	NIFC	3		
Tactical	159.3750N	159.3750N		NIFC	11		
Logistics							
Air to Ground	169.1500N	169.1500N		NIFC	12		

Prepared by (Resource Unit Leader) MELODY FOUNTAIN	Approved by (Planning Section Chief) <i>[Signature]</i>	Date Prepared 07/16/13	Time Prepared 2000
---	--	---------------------------	-----------------------

Division Assignment List	1. Branch I	2. Division/Group P
---------------------------------	-----------------------	-------------------------------

3. Incident Name MID Stuart Creek 2	4. Operational Period 07/17/13 Wednesday DAY Shift 0800 - 2200
--	---

5. Operations Personnel

Operations Chief	STEVE PARR / JOE REYES	Division/Group	DIRK GILES 7/29 / MATT ROBINETT (t)7/25
Operations Chief	KIRKPATRICK (t)	Air Attack Supervisor	RUSSELL GRIPP
Branch Director	SZCZEPANIK / FLORES (t)	Safety Officer	JENNIFER BOYD / D. MCKELVEY (t)

6. Resources Assigned this Period

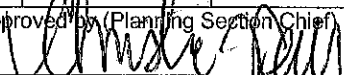
Strike Team/Task Force/ Resource Designator	Leader	Num of Pers.	Trans. Y/N	Drop Off PT./Time	Pick Up PT./Time
CREW T1 MENDOCINO 7/17	NICK BUNCH	20	N	PAPA 1 SPIKE 0800	PAPA 1 SPIKE 2200
CREW T2IA MDS # 1 7/20	BRIAN STUPAK	20	N	PAPA 1 SPIKE 0800	PAPA 1 SPIKE 2200
CREW T2IA DES # 1 7/20	ERICH BURKENTINE	20	N	PAPA 1 SPIKE 0800	PAPA 1 SPIKE 2200
CREW T2 NORTH STAR 7/20	MACKER BABB	19	N	PAPA 1 SPIKE 0800	PAPA 1 SPIKE 2200
CREW T2 BUCKLAND	TED JOHN	16	N	PAPA 1 SPIKE 0800	PAPA 1 SPIKE 2200
STLC	DALE WOITAS 7/25	1	N	PAPA 1 SPIKE 0800	PAPA 1 SPIKE 2200
STLC	CHRIS MOORE 7/25	1	N	PAPA 1 SPIKE 0800	PAPA 1 SPIKE 2200
TFLD	KAY KUDO 7/18	1	N	PAPA 1 SPIKE 0800	PAPA 1 SPIKE 2200
SOFR	JAYSON SMITH 7/18	1	N	PAPA 1 SPIKE 0800	PAPA 1 SPIKE 2200
IMSM	PHIL GROSSARTH 7/17	1	N	PAPA 1 SPIKE 0800	PAPA 1 SPIKE 2200
EMPF	TERRY STEVENSON 7/18	1	N	PAPA 1 SPIKE 0800	PAPA 1 SPIKE 2200

7. Control Operations
Mop up direct hand line south from P/R division break south toward Horner Creek. Lay hose supported with pumps and mop up all heat up to 100 feet of completed line. Grid division for spot fires, extinguish and mop up.

8. Special Instructions
ALL LINE ORDERS WILL BE ORDERED THROUGH 'FIREBIRD SPIKE'
When observable ordnance are encountered, leave them intact, DO NOT TOUCH, contact DIVS and Range Control.
When observable cultural resources are encountered, leave them intact and document location. Notify READ.
Only aviation resources will be used within impact areas, except on hardened roads coordinated with military Explosive Ordnance Disposal (EOD) range control personnel. 1 mile buffer added to limited entry area. Review pump safety.

9. Division/Group Communications Summary
--

Function	Frequency - RX	Frequency - TX	Tone	System	Channel	System	Channel
Command	170.0125N	165.2500N	123.0	NIFC	3		
Tactical	166.7750N	166.7750N		NIFC	10		
Logistics							
Air to Ground	169.1500N	169.1500N		NIFC	12		

Prepared by (Resource Unit Leader) MELODY FOUNTAIN	Approved by (Planning Section Chief) 	Date Prepared 07/16/13	Time Prepared 2000
---	---	---------------------------	-----------------------

8

Division Assignment List	1. Branch I	2. Division/Group R
---------------------------------	-----------------------	-------------------------------

3. Incident Name MID Stuart Creek 2	4. Operational Period 07/17/13 Wednesday DAY Shift 0800 - 2200
--	---

5. Operations Personnel

Operations Chief	STEVE PARR / JOE REYES	Division/Group	M. CORLEY / J. CRAMER (t) 7/26
Operations Chief	KIRKPATRICK (t)	Air Attack Supervisor	RUSSELL GRIPP
Branch Director	SZCZEPANIK / FLORES (t)	Safety Officer	JENNIFER BOYD / D. MCKELVEY (t)

6. Resources Assigned This Period

Strike Team/Task Force/ Resource Designator	Leader	Num of Pers.	Trans. Y/N	Drop Off PT./Time	Pick Up PT./Time
WHISKEYTOWN WFM 7/21	ERIC NEISWANGER	8	N	LION SPIKE 0800	LION SPIKE 2200
CREW T2IA MOF # 1 7/20	SEAN FLANAGAN	20	N	LION SPIKE 0800	LION SPIKE 2200
ENG ALASKA DVF M33 E-56 7/17	KEVIN MENKENS	3	N	LION SPIKE 0800	LION SPIKE 2200
ENG CEN. MATSU BR66 E-89 7/17	DAVID REILLY	3	N	LION SPIKE 0800	LION SPIKE 2200
ENG T3 7520 E-211 7/19	HUNT/ COLE	2	N	LION SPIKE 0800	LION SPIKE 2200
ENG T6 34216 E-212 7/19	LESATZ/ FUSCO	2	N	LION SPIKE 0800	LION SPIKE 2200
ENG T6 33298 E213 7/19	GLASPEY/ SNYDER	2	N	LION SPIKE 0800	LION SPIKE 2200
ENG T3 33388 E-214 7/19	DALLMAN/ TINGLEY	2	N	LION SPIKE 0800	LION SPIKE 2200
ENG T6 AK 66 E-215 7/19	LINEBURGER	4	N	LION SPIKE 0800	LION SPIKE 2200
JUMPER BOAT E-38	YEAGER /M. CORLEY	1	N	LION SPIKE 0800	LION SPIKE 2200
ZODIAK 6	BRIAN KIRKMAN 7/20	1	N	LION SPIKE 0800	LION SPIKE 2200
ZODIAK 7	DIBERT/ O'BRIEN	1	N	LION SPIKE 0800	LION SPIKE 2200
FOBS	TIMOTHY EPP	1	N	LION SPIKE 0800	LION SPIKE 2200
FOBS	COLLINS BONDS	1	N	LION SPIKE 0800	LION SPIKE 2200
SOFR	JOE PASTORE 7/17	1	N	LION SPIKE 0800	LION SPIKE 2200

7. Control Operations
 Follow fire edge south of Chena River from Cabin #1 east toward South Fork Chena River. Build fire line, cut trees and lay hose where fire did not meet the Chena River. Secure line and mop up. Provide boat transportation to fire resources to cross Chena River. Establish and implement river crossing safety protocol. Ensure clean water practices are in place to protect river water quality and natural resources.

8. Special Instructions
 ALL LINE ORDERS WILL BE ORDERED THROUGH 'FIREBIRD SPIKE'
 When observable ordnance are encountered, leave them intact, DO NOT TOUCH, contact DIVS and Range Control.
 When observable cultural resources are encountered, leave them intact and document location. Notify READ.
 Only aviation resources will be used within impact areas, except on hardened roads coordinated with military Explosive Ordnance Disposal (EOD) range control personnel. 1 mile buffer added to limited entry area. Review pump safety.

9. Division/Group Communications Summary

Function	Frequency - RX	Frequency - TX	Tone	System	Channel	System	Channel
Command	170.0125N	165.2500N	123.0	NIFC	3		
Tactical	159.3750N	159.3750N		NIFC	11		
Logistics							
Air to Ground	169.1500N	169.1500N		NIFC	12		

Prepared by (Resource Unit Leader) MELODY FOUNTAIN	Approved by (Planning Section Chief) <i>Christa Vein</i>	Date Prepared 07/16/13	Time Prepared 2000
---	---	---------------------------	-----------------------

Division Assignment List	1. Branch I	2. Division/Group S
---------------------------------	-----------------------	-------------------------------

3. Incident Name MID Stuart Creek 2	4. Operational Period 07/17/13 Wednesday DAY Shift 0800 - 2200
---	--

5. Operations Personnel

Operations Chief	STEVE PARR / JOE REYES	Division/Group	TAMER YOUNG 7/23
Operations Chief	KIRKPATRICK (t)	Air Attack Supervisor	RUSSELL GRIPP
Branch Director	SZCZEPANIK / FLORES (t)	Safety Officer	JENNIFER BOYD / D. MCKELVEY (t)

6. Resources Assigned (this Period)

Strike Team/Task Force/ Resource Designator	Leader	Num of Pers.	Trans. Y/N	Drop Off PT./Time	Pick Up PT./Time
UNSTAFFED					

7. Control Operations
Patrol fire edge along South Fork Chena River. Inform OPSC of any fire on crossing or spotting across the South Fork Chena River to the east.

8. Special Instructions
ALL LINE ORDERS WILL BE ORDERED THROUGH 'FIREBIRD SPIKE'

When observable ordnance are encountered, leave them intact, DO NOT TOUCH, contact DIVS and Range Control.
When observable cultural resources are encountered, leave them intact and document location. Notify READ.
Only aviation resources will be used within impact areas, except on hardened roads coordinated with military Explosive Ordnance Disposal (EOD) range control personnel. 1 mile buffer added to limited entry area. Review pump safety.

9. Division/Group Communications Summary

Function	Frequency - RX	Frequency - TX	Tone	System	Channel	System	Channel
Command	170.0125N	165.2500N	123.0	NIFC	3		
Tactical	159.3750N	159.3750N		NIFC	11		
Logistics							
Air to Ground	169.1500N	169.1500N		NIFC	12		

Prepared by (Resource Unit Leader) MELODY FOUNTAIN	Approved by (Planning Section Chief) 	Date Prepared 07/16/13	Time Prepared 2000
--	---	----------------------------------	------------------------------

Division Assignment List	1. Branch I	2. Division/Group A
---------------------------------	-----------------------	-------------------------------

3. Incident Name MID Stuart Creek 2	4. Operational Period 07/17/13 Wednesday DAY Shift 0800 - 2200
---	--

5. Operations Personnel

Operations Chief	STEVE PARR / JOE REYES	Division/Group	B. STEERS / OoSAHWE (t)
Operations Chief	KIRKPATRICK (t)	Air Attack Supervisor	RUSSELL GRIPP
Branch Director	SZCZEPANIK / FLORES (t)	Safety Officer	JENNIFER BOYD / D. MCKELVEY (t)

6. Resources Assigned this Period

Strike Team/Task Force/ Resource Designator	Leader	Num of Pers.	Trans. Y/N	Drop Off PT./Time	Pick Up PT./Time
CREW T1 REDDING IHC 7/17	DAN MALLIA	20	N	ALPHA SPIKE 0800	ALPHA SPIKE 2200
CREW T1 MIDNIGHT SUN IHC 7/18	JACOB B LIVINGSTON	19	N	ALPHA SPIKE 0800	ALPHA SPIKE 2200
CREW T1 CHENA IHC 7/23	CHRIS MARABETTA	20	N	ALPHA SPIKE 0800	ALPHA SPIKE 2200
CREW T2IA PAS # 1 7/20	JOHN HECKER	20	N	ALPHA SPIKE 0800	ALPHA SPIKE 2200
SOFR	RONALD McDOLE	1	N	ALPHA SPIKE 0800	ALPHA SPIKE 2200
EMTF	CARMELLA BAUMAN 7/20	1	N	ALPHA SPIKE 0800	ALPHA SPIKE 2200
EMTF	DAVID MOLTER 7/20	1	N	ALPHA SPIKE 0800	ALPHA SPIKE 2200

7. Control Operations
 Contain spot fires across South Fork Chena River on each side of Marten Creek. Construct hand line and cold trail fire edge, extinguish and mop up. Grid green for additional spot fires. Monitor fire, inform OPSC of any new threat to holding on South Fork Chena River.

8. Special Instructions
ALL LINE ORDERS WILL BE ORDERED THROUGH 'FIREBIRD SPIKE'
 When observable ordnance are encountered, leave them intact, **DO NOT TOUCH**, contact DIVS and Range Control.
 When observable cultural resources are encountered, leave them intact and document location. Notify READ.
 Only aviation resources will be used within impact areas, except on hardened roads coordinated with military Explosive Ordnance Disposal (EOD) range control personnel. 1 mile buffer added to limited entry area.

9. Division/Group Communications Summary

Function	Frequency - RX	Frequency - TX	Tone	System	Channel	System	Channel
Command	170.0125N	165.2500N	123.0	NIFC	3		
Tactical	159.3750N	159.3750N		NIFC	11		
Logistics							
Air to Ground	169.1500N	169.1500N		NIFC	12		

Prepared by (Resource Unit Leader) MELODY FOUNTAIN	Approved by (Planning Section Chief) <i>[Signature]</i>	Date Prepared 07/16/13	Time Prepared 2000
--	--	----------------------------------	------------------------------

Division Assignment List	1. Branch III	2. Division/Group B/C/F
---------------------------------	-------------------------	-----------------------------------

3. Incident Name MID Stuart Creek 2	4. Operational Period 07/17/13 Wednesday DAY Shift 0800 - 2200
---	--

5. Operations Personnel

Operations Chief	STEVE PARR / JOE REYES	Division/Group	KELLY / LEUSCH / J. HOLMES (t)
Operations Chief	KIRKPATRICK (t)	Air Attack Supervisor	RUSSELL GRIPP
Branch Director	RON GARCIA	Safety Officer	JENNIFER BOYD / D. MCKELVEY (t)

6. Resources Assigned This Period

Strike Team/Task Force/ Resource Designator	Leader	Num of Pers.	Trans. Y/N	Drop Off PT./Time	Pick Up PT./Time
CREW T2 UPPER KALSKAG 7/18	JEFF KERR	16	N	FB SPIKE 0800	FB SPIKE 0800
CREW T2 ST. MARY'S 7/18	LARRY OLIN	16	N	FB SPIKE 0800	FB SPIKE 0800
ENG BR 941	SCOTT THOMPSON	2	N	FB SPIKE 0800	FB SPIKE 0800
ENG BR 940	MARC HARASTI	2	N	FB SPIKE 0800	FB SPIKE 0800
ENG C-31 VALDEZ E-55	DAVE REESE	2	N	FB SPIKE 0800	FB SPIKE 0800
ENG BR 942 E-260	GORDON HILL	2	N	FB SPIKE 0800	FB SPIKE 0800
ENG C-61 E-240 7/21	JIM MILLER	4	N	FB SPIKE 0800	FB SPIKE 0800
ENG FORT GREELEY ENG 20	PLUMBLY	2	N	FB SPIKE 0800	FB SPIKE 0800
W/T CHIPS # 2 E-19	CHIP STOCKTON	1	N	FB SPIKE 0800	FB SPIKE 0800
W/T BLACK GOLD E-225	LONNIE COPELAND	1	N	FB SPIKE 0800	FB SPIKE 0800
W/T GOLDSTREAM E-5	DAVE HYLAND	1	N	FB SPIKE 0800	FB SPIKE 0800
EXCAV WV BUILDERS E-309	ANDER ROCKSTAD	1	N	FB SPIKE 0800	FB SPIKE 0800
EXCAV FAIRBANKS E-322	LLYOD COOLEY	1	N	FB SPIKE 0800	FB SPIKE 0800
SKIDG FAIRBANKS CONST # 1 7/16	RICHARD BIENVENUE	1	N	FB SPIKE 0800	FB SPIKE 0800
SKIDG FAIRBANKS CONST # 2 7/15	RUSSEL CAMP	1	N	FB SPIKE 0800	FB SPIKE 0800
TFLD	BURWICK/ KEMERY	2	N	FB SPIKE 0800	FB SPIKE 0800
HEQB	RANDY FOLAND	1	N	FB SPIKE 0800	FB SPIKE 0800
SOFR	TOM PLYMALE	1	N	FB SPIKE 0800	FB SPIKE 0800
EMT (IMS-M)	DOUGLAS GREGG	1	N	FB SPIKE 0800	TO ICP BY 1700
EMT (IMS-T)	DAVID POXLEITNER	1	N	FB SPIKE 0800	TO ICP BY 1700

7. Control Operations
 Monitor fire's activity in the Restricted Area. Continue to employ point protection tactics to values on Camera #1 and Camera #2 roads, including power lines. Keep fire north of Brigadier Rd to halt fire progress to the south. Do not work off road surface in Restricted Area. Hold fire north of Quarry Rd from C/F division break to F/L division break at junction of Quarry/Manchu Rd. Mop up and repair the spot fires on south side of Quarry Rd. Mop up hand line off ISBC to the north.

8. Special Instructions
 ALL LINE ORDERS WILL BE ORDERED THROUGH 'FIREBIRD SPIKE'
 When observable ordnance are encountered, leave them intact, **DO NOT TOUCH**, contact DIVS and Range Control. When observable cultural resources are encountered, leave them intact and document location. Notify READ. Only aviation resources will be used within impact areas, except on hardened roads coordinated with military Explosive Ordnance Disposal (EOD) range control personnel. 1 mile buffer added to limited entry area. Review pump safety.

9. Division/Group Communications Summary

Function	Frequency - RX	Frequency - TX	Tone	System	Channel	System	Channel
Command	170.1000N	162.1625N		NIFC	2		
Tactical	168.2500N	168.2500N		NIFC	7		
Logistics							
Air to Ground	169.1500N	169.1500N		NIFC	12		

Prepared by (Resource Unit Leader) MELODY FOUNTAIN	Approved by (Planning Section Chief) 	Date Prepared 07/16/13	Time Prepared 2000
--	--	----------------------------------	------------------------------

Division Assignment List	1. Branch III	2. Division/Group K/L
---------------------------------	-------------------------	---------------------------------

3. Incident Name MID Stuart Creek 2	4. Operational Period 07/17/13 Wednesday DAY Shift 0800 - 2200
---	--

5. Operations Personnel

Operations Chief	STEVE PARR / JOE REYES	Division/Group	RICK MARINELLI 7/17 / D. DISANTO (t)
Operations Chief	KIRKPATRICK (t)	Air Attack Supervisor	RUSSELL GRIPP
Branch Director	RON GARCIA	Safety Officer	JENNIFER BOYD / D. MCKELVEY (t)

6. Resources Assigned This Period

Strike Team/Task Force/ Resource Designator	Leader	Num of Pers.	Trans. Y/N	Drop Off PT./Time	Pick Up PT./Time
CREW T2IA PAS # 2 7/20	DAVID E FELIX	20	N	FB SPIKE 0800	FB SPIKE 0800
CREW T2IA GMF # 1 7/20	HAROLD SMITH	20	N	FB SPIKE 0800	FB SPIKE 0800
TFLD	RYAN CUMBOW 7/17	1	N	FB SPIKE 0800	FB SPIKE 0800
SOFR	KIETH CRUMPTON 7/17	1	N	FB SPIKE 0800	FB SPIKE 0800
EMT (IMS-M)	DOUGLAS GREGG 7/17	1	N	FB SPIKE 0800	TO ICP BY 1700
EMT (IMS-T)	DAVID POXLEITNER 7/17	1	N	FB SPIKE 0800	TO ICP BY 1700
SOFR	KEITH CRUMPTON	1	N	FB SPIKE 0800	FB SPIKE 0800

7. Control Operations
 Hold fire east of dozer and hand line from L/F division break through Moose Creek to Branch I/III break at DP 13 on Beaver Creek Rd. Mop up and patrol direct line to prevent fire from progressing west toward Manchu Range.

8. Special Instructions
 ALL LINE ORDERS WILL BE ORDERED THROUGH 'FIREBIRD SPIKE'
 When observable ordnance are encountered, leave them intact, **DO NOT TOUCH**, contact DIVS and Range Control.
 When observable cultural resources are encountered, leave them intact and document location. Notify READ.
 Only aviation resources will be used within impact areas, except on hardened roads coordinated with military Explosive Ordnance Disposal (EOD) range control personnel. 1 mile buffer added to limited entry area.
 Review pump safety.

9. Division/Group Communications Summary

Function	Frequency - RX	Frequency - TX	Tone	System	Channel	System	Channel
Command	168.1000N	170.4500N	123.0	NIFC	1		
Tactical	166.7250N	166.7250N		NIFC	6		
Logistics							
Air to Ground	169.1500N	169.1500N		NIFC	12		

Prepared by (Resource Unit Leader) MELODY FOUNTAIN	Approved by (Planning Section Chief) <i>[Signature]</i>	Date Prepared 07/16/13	Time Prepared 2000
--	--	----------------------------------	------------------------------

Division Assignment List	1. Branch	2. Division/Group Firebird Spike Staging
---------------------------------	-----------	--

3. Incident Name MID Stuart Creek 2	4. Operational Period 07/17/13 Wednesday DAY Shift 0800 - 2200
---	--

5. Operations Personnel

Operations Chief	STEVE PARR / JOE REYES	Division/Group	
Operations Chief	KIRKPATRICK (t)	Air Attack Supervisor	RUSSELL GRIPP
Branch Director		Safety Officer	JENNIFER BOYD / D. MCKELVEY (t)

6. Resources Assigned this Period

Strike Team/Task Force/ Resource Designator	Leader	7/19	Num of Pers.	Trans. Y/N	Drop Off PT./Time	Pick Up PT./Time
STAM	KELLY HELGET	7/19	1	N	FB SPIKE 0800	FB SPIKE 2200
TRANSPORT HUBBARD E-239				N	FB SPIKE 0800	FB SPIKE 2200
DOZ REMOTE # 1 E-205	TIM KNIGHT		1	N	FB SPIKE 0800	FB SPIKE 2200
LOWBOY E-326					FB SPIKE 0800	FB SPIKE 2200
EMTP	TABITHA HUGHES		1	N	FB SPIKE 0800	FB SPIKE 2200
EMT	TERRI BERRIE	7/20	1	N	FB SPIKE 0800	FB SPIKE 2200
RANGE CONTROL EQUIPMENT	GREG SWALLOWS				FB SPIKE 0800	FB SPIKE 2200
DOZERS RC-2,RC-3,RC-4,RC-5					FB SPIKE 0800	FB SPIKE 2200
FECON RC-8					FB SPIKE 0800	FB SPIKE 2200
FECON RC-6					FB SPIKE 0800	FB SPIKE 2200
SUSV RC-12					FB SPIKE 0800	FB SPIKE 2200
HUMMV RC-13,RC-14,RC-15					FB SPIKE 0800	FB SPIKE 2200

7. Control Operations
 Notify operations or branches as resources become available. Resources to remain available to STAM for assignment to line when ordered. Demobing heavy equipment will be inspected at Staging.

8. Special Instructions
ALL LINE ORDERS WILL BE ORDERED THROUGH 'FIREBIRD SPIKE'

When observable ordnance are encountered, leave them intact, DO NOT TOUCH, contact DIVS and Range Control.
 When observable cultural resources are encountered, leave them intact and document location. Notify READ.
 Only aviation resources will be used within impact areas, except on hardened roads coordinated with military Explosive Ordnance Disposal (EOD) range control personnel. 1 mile buffer added to limited entry area. Review pump safety.

9. Division/Group Communications Summary

Function	Frequency - RX	Frequency - TX	Tone	System	Channel	System	Channel
Command	168.1000N	170.4500N	123.0	NIFC	1		
Tactical							
Logistics							
Air to Ground	169.1500N	169.1500N		NIFC	12		

Prepared by (Resource Unit Leader) MELODY FOUNTAIN	Approved by (Planning Section Chief) 	Date Prepared 07/16/13	Time Prepared 2000
--	---	----------------------------------	------------------------------

AIR OPERATIONS SUMMARY
PREPARED BY: Jason Nava, AOB
DATE/TIME PREPARED: 7/16/2013 1830 hrs.

1. INCIDENT NAME: Stuart Creek # 2
2. OPERATIONAL PERIOD DATE: 7/17/2013
START TIME: 1000
END TIME: 2400
SUNRISE: 0413
SUNSET: 1136

3. REMARKS (Safety Notes, Hazards, Air Operations, Special Equipment, etc.): 150' Tower erected at Bravo 2
 FIXED WING BE AWARE OF HELIBASE LOCATION
 12 HOUR DUTY DAY RESTRICTIONS FOR TANKERS STARTING
 LADD tower control is operational at this time-use caution with in/out traffic
 Assume roads have wires
 Range Control Freq 125.300, Military Aircraft only in the Impact Zone, Use caution when smoke is heavy and visibility is limited, *Medivac Hospital freq 155.160*

4. Medivac C-GRZ Hoist Available request
5. TFR: TFR 3/8848 in place. Polygon shape. At and below 5000 feet MSL.

6. PERSONNEL
Phone
 AOB: Jason Nava (949) 812-8702
 AOB: Gary Mullins (907) 960-1141
 ASGS: Lisa Cardoza (949) 616-4226
 ASGS: Ty Miller (907) 460-7530
HLCO:
 ATGS: Russ Grip (530) 598-4172
 AFS Helibase: Tom Schmidt (907) 356-5659
 HEB 1: Jesse Best (406) 212-4822
Deck:
UYT

7. FREQUENCIES
AIR/AIR FW: 124.2500
BRIEFING 132.0250
AIR/AIR RW: 123.1500
AIR/GROUND:
 Primary 169.1500
 Secondary 166.6750

8. FIXED-WING #Available/Type/Make-Model/FAA N# & Bases: LADD, Palmer
Airtankers: T-152, T-155, T-142
Scoopers: 264,267,885
 Available at LADD, order direct through UYT Dispatch
Lead planes & ASMs:
 Available at LADD, order direct through UYT Dispatch
ATGS Aircraft:
 Commander 1010F,

9. HELICOPTERS (Use Additional Sheets As Necessary)

FAA N#	T Y	MAKE	BASE	AVAIL	START	REMARKS	FAA N#	T Y	MAKE/MODEL	BASE	AVAIL	START	REMARKS
214TH	1	Bell 214	Firebird	1000	1100	CWN	361EH	2	Bell 212	FIRE BIRD	1000	1030	On loan
	1	Chinook, U.S. Army	LADD	1000	1100	Fly reservation only	516LE	3	Bell 206L3 907-750-6620	LADD	0900	0930	On loan
	1	Blackhawk, U.S. Army	LADD	1000	1100	Fly reservation only	399EH	2	Bell 212	FIRE BIRD	1000	1030	Local ship
16920	2	Bell 212	Firebird	1100	1130	On loan/UA	*911CV	3	B-3 A-Star	LADD	1000	1030	Local Ship
*CGIRZ	2	Bell 212	Firebird	0900	0930	With 8 person crew	*97HJ	2	Bell 205	FIRE BIRD	0900	0930	RAP

SAFETY MESSAGE

Stuart Creek 2

Day Shift

July 17, 2013

USE LOOKOUTS, COMMUNICATIONS, ESCAPE ROUTES, SAFETY ZONES
WEAR YOUR PERSONAL PROTECTIVE EQUIPMENT DURING ALL OPERATIONS

Brief your crews on all components of the IAP

Transition to a new team

- New overhead team, "Alaska Green Team" will shadow tomorrow
- Expect some new overhead on the line.
- Communications are the same.
- Goal is for the transition to be seamless for folks on the ground.

Power Lines

- Power lines will be energized in Div C and Div F along the Johnson/Quarry Rd tomorrow.
- Military will monitor for problems, line can be de-energized in approximately 30 minutes if issues arise.

Hazard Trees

- All over the fire, snags and green trees are coming down.
- Identify all hazard tree risks
- Flag and communicate to your crew
- Saw teams should clear all hazard trees before mop up begins
- Maintain Situational Awareness at all times

Transportation

- Expect the military in Branch III, repairing infrastructure and checking for damage.

Prepared by: Jennifer Boyd, Doug McKelvey Safety Officer

Date: 7/16/13



TRANSFER OF COMMAND

Fireline Safety Category

Risks to fireline personnel increase significantly during transfer of command periods regardless of the size or complexity of the incident. There is a high potential for fatalities, serious injuries, or incidents with potential during transfer of command periods (some have occurred in the past). Be proactive in mitigating the risks by proper implementation of LCES—Lookout, Communications, Escape Routes, and Safety Zones.

- Factors for increased risks to fireline personnel during transition periods include:
 - No, or poor, briefing of incoming personnel
 - Lack of fire weather and behavior information, both forecast and observed
 - Communications; face-to-face briefings may not be possible and radio frequencies may be overextended and/or changing due to the increased demands on the system.
 - Initial attack resources may not have checked-in and the Incident Commander may not be aware of the number, type and location of all resources.
 - Location of safety zones and escape routes may not be known and communicated to all resources.
 - Not all Resources know who is in command.

- Mitigation actions to take:
 - Lookouts: Post and maintain your own lookouts.
 - Communications: Maintain existing communications with your own and adjacent resources, as well as your original supervisor, while you are developing communications with incoming adjacent resources and your new supervisor.
 - Escape routes and safety zones: Identify escape routes and assure incoming resources are aware of their locations; be aware that your original escape routes and safety zones may no longer be accessible due to changing fire behavior or your increased distance from them.
 - Transition at the morning briefing
 - Utilize the Incident Response Pocket Guide transition checklist

References:

Interagency Standards for Fire and Fire Aviation Operations
Incident Response Pocket Guide

Have an idea? Have feedback? Share it.

ONLINE | MAIL: 6 Minutes For Safety Task Group • 3833 S. Development Ave • Boise, ID 83705 | FAX: 208-387-5250

6 Minutes Home

INCIDENT RADIO COMMUNICATIONS PLAN		Incident Name STUART CREEK 2 AK-MID-000280		Date/Time Prepared 07/16/13	Operational Period Date/Time DAY & NIGHT SHIFT 07/17/13				
Only frequencies listed on this 205 are authorized for use on this incident.			Hand programmers accept all responsibility for the use of unauthorized frequencies.						
Ch #	Function	Channel Name	Assignment	RX Freq N or W	RX Tone	TX Freq N or W	TX Tone	Mode	Remarks
1	COMMAND	CMD 1	BRANCH III	168.1000N	123.0	170.4500N	123.0	A	POLE HILL
2	COMMAND	CMD 2	BRANCH III	170.1000N		162.1625		A	LINKED TO BLM-UYT-FAIRBANKS
3	COMMAND	CMD 3	BRANCH I	170.0125N	123.0	165.2500N	123.0	A	
4	TACTICAL	TAC 1	DIVISION M / A	168.0500N		168.0500N		A	
5	TACTICAL	TAC 2	DIVISION R	168.2000N		168.2000N		A	
6	TACTICAL	TAC 3	DIVISION K / L	166.7250N		166.7250N		A	
7	TACTICAL	TAC 4	DIVISION B / C / F	168.2500N		168.2500N		A	
8	COMMAND	CMD 4	ICP	170.3625N	123.0	163.3875N	123.0	A	STUART CREEK ICP
9									
10	TACTICAL	TAC 5	DIVISION P	166.7750N		166.7750N		A	STATE TACTICAL 2
11	TACTICAL	TAC 6	DIVISION N, S and STRUCTURE GROUP	159.3750N		159.3750N		A	STATE TACTICAL 1
12	AIR TO GROUND	A/G 1	A/G TACTICAL & LOGISTICAL	169.1500N		169.1500N		A	
13	AIR TO GROUND	A/G 2	A/G ROTOR	166.6750N		166.6750N		A	
14	URGENT AIR CONTACT	AIR GUARD	ALL DIVISIONS	168.6250N		168.6250N	110.9	A	USE ONLY FOR URGENT AIRCRAFT CONTACT, USE TONE 1
15									
16	URGENT AIR CONTACT	AIR GUARD	ALL DIVISIONS	168.6250N		168.6250N	110.9	A	USE ONLY FOR URGENT AIRCRAFT CONTACT, USE TONE 1
Prepared by				Incident Location					
Kody Kerwin, COML CIIMT #1				North Pole, AK LAT: N 64 45.0815' LONG: W 147 20.8597'					

Kody Kerwin

MEDICAL PLAN 206 ICS	1. INCIDENT NAME Stuart Creek 2	2. DATE PREPARED July 16, 2013	3. TIME PREPARED 2000	4. OPERATIONAL PERIOD July 17, 2013 0800-2200
--------------------------------	------------------------------------	-----------------------------------	--------------------------	---

6. INCIDENT MEDICAL AID STATIONS

MEDICAL AID STATIONS	LOCATION	PARAMEDICS	
		YES	NO
Firebird Camp	Firebird Assault Strip	X	
Line EMT's as assigned	Assigned Divisions	X	X
North Pole Base	North Pole Elementary School		X

6. TRANSPORTATION

A. AMBULANCE SERVICES

NAME	LOCATION	PHONE	PARAMEDICS	
			YES	NO
Eielson AFB	AFB	911 or (907)356-5551	X	
Steese FD Ambulance (Pleasant Valley Area)	Pleasant Valley, AK	911 or (907)450-6507	X	

B. INCIDENT AMBULANCES

NAME	LOCATION	PARAMEDICS	
		YES	NO
Ft Wainwright FD Ambulance (ground)	Branch III(Day) Firebird Spike(Night) (907)529-9905	X	

C. MEDIVAC SERVICES

NAME	LOCATION	PHONE	Hoist	ALS	BLS
Evergreen Medivac (Type 2 Helicopter)	Ft Greely, Delta Junction, AK	(907)363-9170 (907)356-5551	X	X	
Guardian Flight (Fixed wing)	Fairbanks	(907)356-5551		X	

7. HOSPITALS

NAME	ADDRESS	TRAVEL TIME		PHONE	HELIPAD		BURN CTR	
		AIR	GRND		YES	NO	YES	NO
Fairbanks Memorial 64*49.90' x 147*44.50' Contact Freq: 155.160	1650 Cowles Street, Fairbanks, AK 99701	30 min	90 min	(907)458-5556 (907)353-9170	X			X
Anchorage-Providence Hosp 61*11.62' x 149*49.42'	3200 Providence Dr Anchorage, AK 99504	2 hrs	6 hrs	(907)212-3111	X			X
Harborview Burn Center 47* 36.190 x 122*19.500	325 9th Ave Seattle, WA 98104	4hrs		(206) 284-2876	X		X	

8. MEDICAL EMERGENCY PROCEDURES

LINE MEDICAL EMERGENCY:

Crew Supervisor to contact Division Supervisor/Operations with patient complaint/condition and location. Division Supervisor/Operations contacts communications:

- Division Supervisor/Operations to use "injury or incident communication protocol" on next page
- Division Supervisor/Operations will run medical emergency on command channel
- Communications contacts MEDL via radio or cell phone and clears command channel for emergency traffic
- Medical Unit Leader will:
 1. Have communications dispatch ground/air transport resources
 2. Develop primary and contingency transport plan
 3. Notify Safety, Logistics, operations and Air ops

SPIKE CAMP MEDICAL EMERGENCY DAY:

Notify Communications of camp emergency
Communications contacts Medical Unit with patient complaint/condition and location.

- Medical Unit contacts:
 - * Safety, Logistics and operations
- Medical Unit Leader will:
 1. Have communications dispatch ground/air transport resources
 2. Develop primary and contingency transport plan

SPIKE CAMP MEDICAL EMERGENCY NIGHT:

Notify Facilities and/or Medical manager at spike camp.
Facilities and/or Medical manager will contact Communications.

- Communications contacts MEDL by Cell phone
- Medical Unit Leader contacts:
 - * Safety, Logistics and operations
- Medical Unit Leader will:
 1. Dispatch ground/air transport resources
 2. Develop primary and contingency transport plan

206 ICS	9. PREPARED BY: (Medical Unit Leader)	10. REVIEWED BY: (Safety Officer)
	Matthew Lipson MEDL <i>ML</i>	Jennifer Boyd SOF1 <i>JBoyd</i>

Injury or Incident Communications Protocol

DECLARE: Medical Emergency or Non-emergency Medical transport

Best transport method: Ambulance Helicopter Vehicle

Location _____

Situation _____

Any special equipment required _____

Number of injured _____ Type of injuries _____

Closest pick up point (DP, Helispot) _____

LOC _____ Resp. _____ Pulse _____ BP _____ Weight _____

Injury _____

Medical History/Allergies _____

Air Transportation Triage

	Ground or Air Ambulance to Hosp.	Transport to Med Unit
Mechanism	Hit by a falling tree or large branch Fall of 10' or more Insect bite with shortness of breath Signs of heat stroke (hot, dry, disoriented) Burn Injury greater than 1% body area	Minor dehydration Cut or laceration with bleeding controlled Minor bites and Stings Minor burns
Area Injured	Significant Blunt or Penetrating Trauma to Head, Neck, Chest, Abdomen or pelvis Any Arm or Leg fracture above the Joint	Minor blunt trauma Minor penetrating trauma Extremity sprains and strains Simple fracture below elbow or knee
Symptoms	Disoriented Chest Pain <u>or</u> Shortness of Breath Weak or absent radial pulse Pale, cold and sweating	Alert and oriented No shortness of breath Good pulses

Medivac Sites

H-1	64 46.275 N	146 53.233 W	H-5	64 38.415 N	146 40.352 W
H-2	64 40.768 N	146 48.229 W	H-6	64 42.647 N	146 54.695 W
H-3	64 52.552 N	146 46.660 W	H-7	64 42.180 N	146 52.736 W
H-4	64 47.591 N	146 55.300 W	H-8	64 50.831 N	146 50.074 W

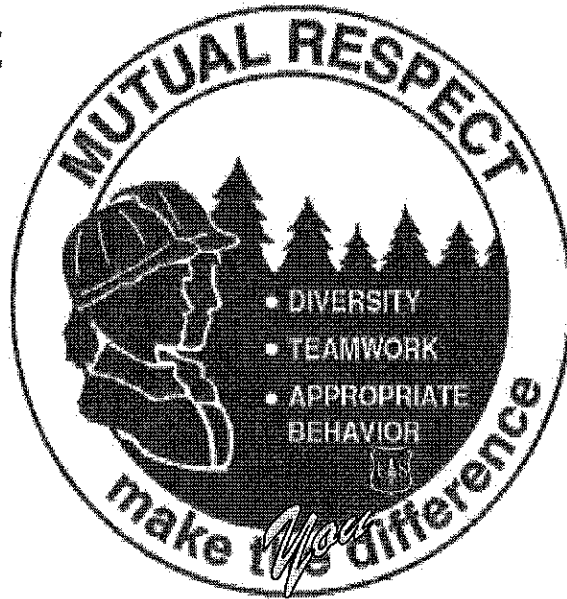
If air or ground ambulance is DELAYED:

Package and transport patient to rendezvous with Ambulance. Re-route EMS helicopter to rendezvous point as appropriate.

If Declaring an "Incident within the Incident"

The closest DIVS will respond to manage the incident. They are responsible for giving an accurate size up, ensuring scene safety, setting priorities and initiating an appropriate response.

The closest Safety Officer and Line EMS will respond to the scene to assist the Branch Director or DIVS. Secure site and begin initial investigation when situation is stabilized.



Playing Nice in the Sand Box

Being on an incident is like being in a sandbox. Some of us have shovels, some of us have trucks, or drive engines, build or fix roads or trails and some are even in the air.

We're all working toward the same objective, but the only way we will get there is to play nice, mind our manners, and all get along while we are in the sandbox.

Play nice in the sandbox and practice mutual respect.

Michael Donch

Human Resources

Stuart Creek #2 Fire Incident Trainee/Trainer Data Form

Training Specialist: Robert Rivelle: Cell - 707.498.1761

- All Incident Trainees, including those on Firefighting Modules: Complete this form and drop off in the box located in the building at Fireball Spike or at the ICP in North Pole, AK. Prior to DEMOB, meet with the Training Specialist to close-out your training package.

A. Trainee Data

Trainee Name: _____ ICS Trainee Position: _____

Request # (A,C,E or O): ____--____ Agency Designator (Example WY-MBF): _____

Cell / Contact # While on Incident: _____ Home Unit Position: _____

Date Assigned: _____ Fire Name / Order Number: **Stuart Creek #2 / AK-MID-280**

Name of the person and location to mail your training package to: (Fire Chief, Training Officer)

Name: _____ Agency: _____

Agency Address: _____

City: _____ State: _____ Zip Code: _____ Phone: _____

B. Trainee Prerequisites

1. Possesses valid Red Card or agency certification card? Yes No
2. Trainee has current position task book issued by home unit? Yes No
3. Trainee has "incident issued" task book with concurrence by home unit. Yes No

C. Trainer/Evaluator Data Trainer / Evaluator Name: _____

ICS position on fire: _____ Agency: _____

Address (optional): _____ City: _____

State: _____ Cell / Contact While on Incident: _____

D. Trainee Goals - (2 tasks or objectives you would like to address).

1. _____

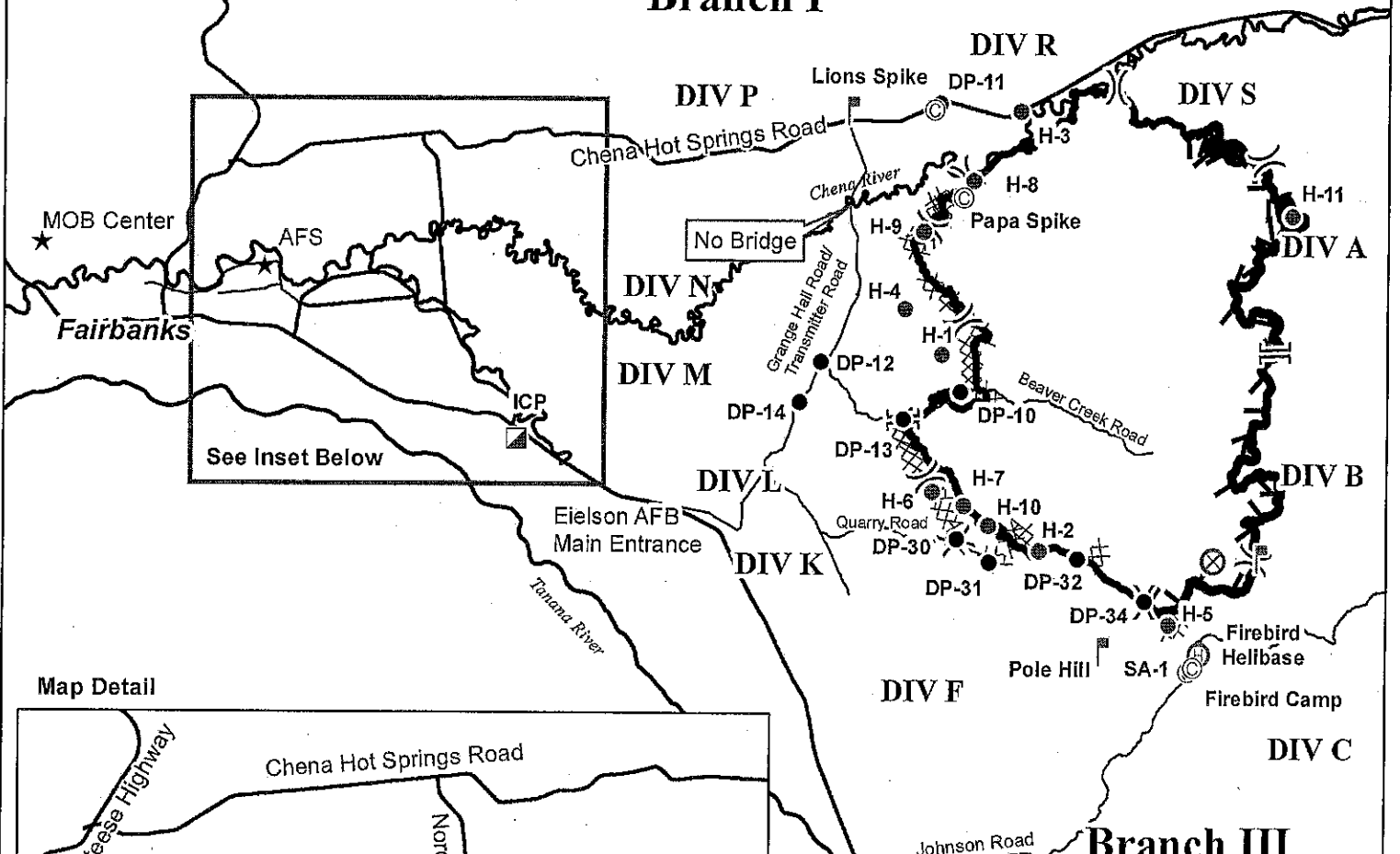
2. _____

**Stuart Creek 2
AK-MID-000280
Transportation Map**

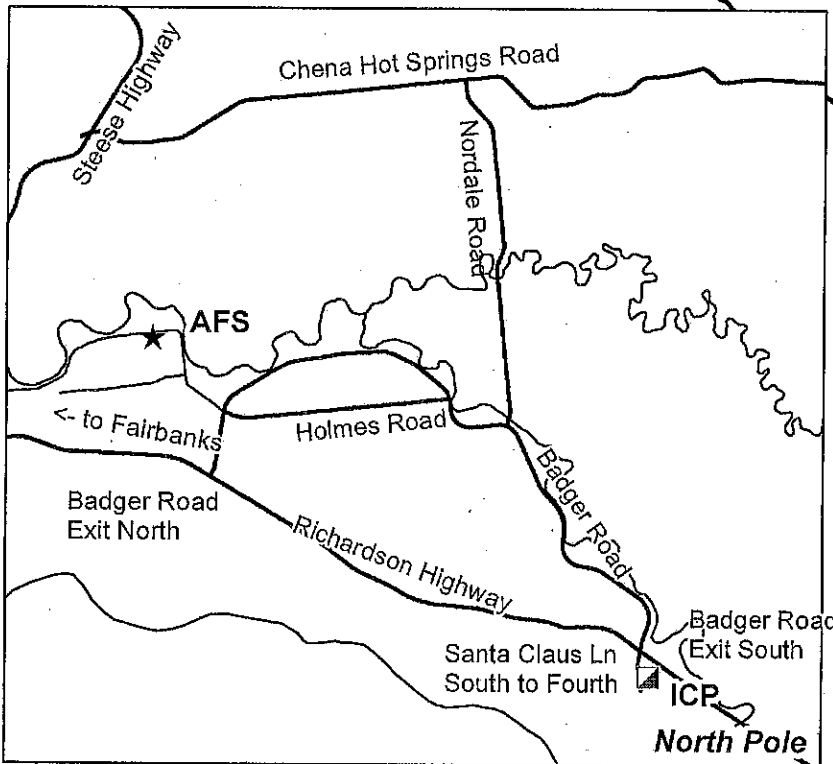
Approx 85,475 acres

NAD 83 Alaska Albers

Branch I



Map Detail



To ICP: Take Badger South/Santa Claus Lane exit and drive south through rotaries to Fourth Avenue. North Pole Elementary School is at corner of Fourth and Snowman.

To Chena Hot Springs Road: Take Badger Road to Nordale, and follow Nordale north to Chena Hot Springs Road.

