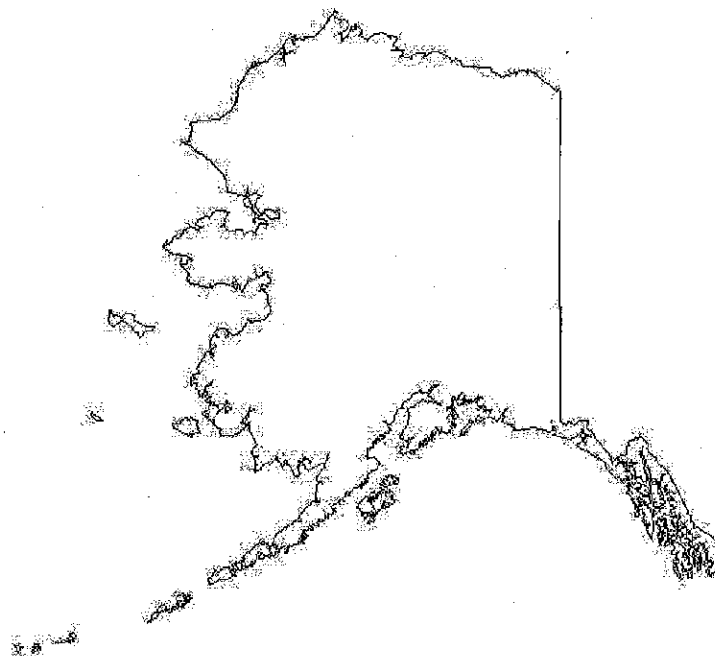


STUART CREEK 2 FIRE

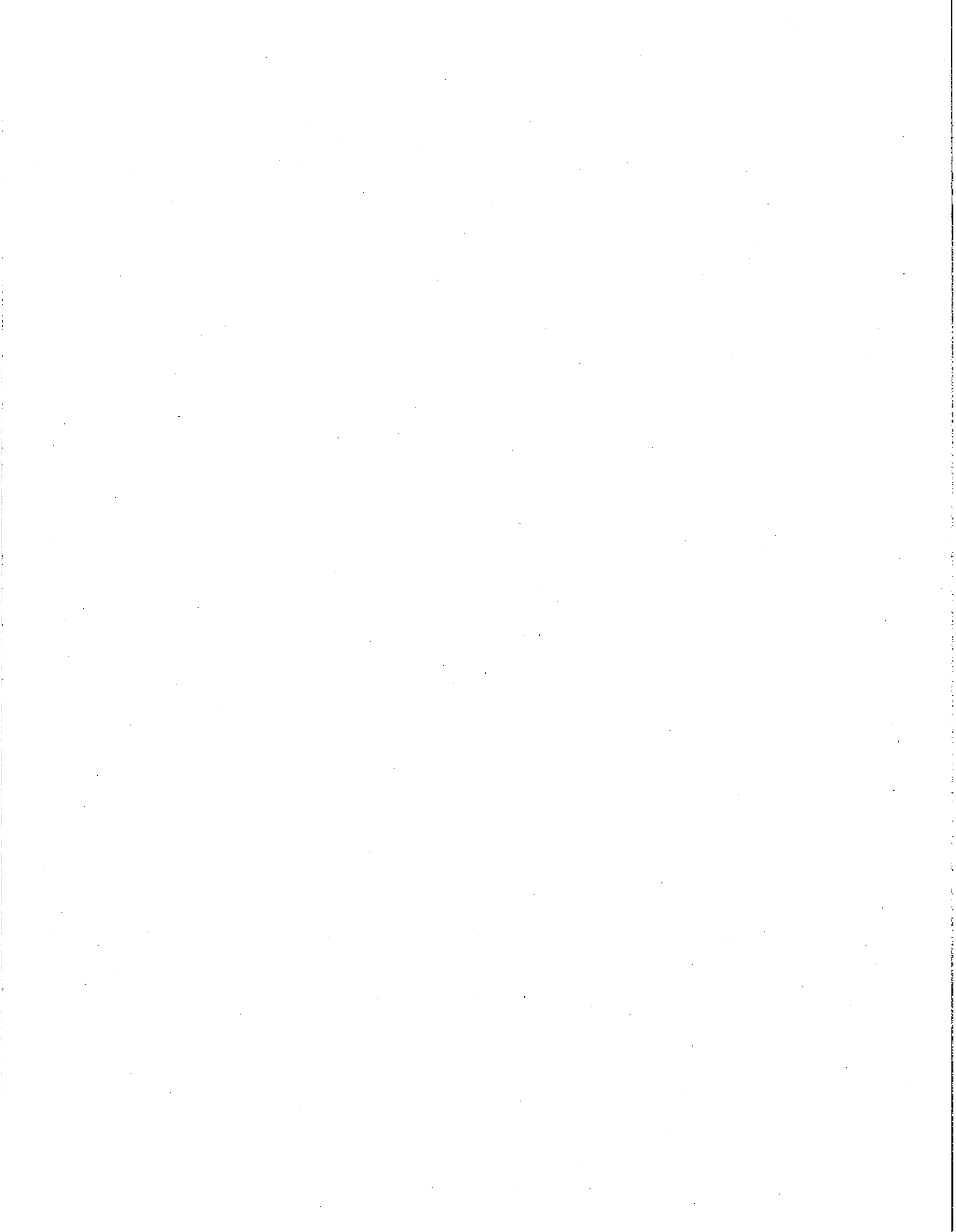
AK-MID-000280



July 18th, 2013
Day 0800 - 2200

Meeting Schedule

0800 Briefing @ Firebird Spike
Simulcast over the radio
11:00 Cooperators Meeting @ North Pole
18:00 Planning Meeting @ North Pole



INCIDENT OBJECTIVES	1. Incident Name Stuart Creek 2	2. Date Prepared 7-17-13	3. Time Prepared 2300
----------------------------	---	------------------------------------	---------------------------------

4. Operational Period

7-18-13 0800-2200 hours

5. General Control Objectives for the Incident (include alternatives)

Control Objectives:

Keep Fire:

- North of the Salcha River.
- East of a line along the Transmitter Road, north to the Chena River and south along the Trans-Alaska Pipeline to the Salcha River.
- West of the South Fork Chena River, south along eastern boundary of the Training Area, south to the Salcha River.
- South of the Chena River.

Management Objectives:

- Provide for firefighter and public safety utilizing LCES, 10 / 18, and risk management from IRPG and required UXO briefings.
- Protect military infrastructure, private residences, cabins, improvements and jurisdictional lands within and adjacent to the fire area.
- Minimize or mitigate threats to known cultural resources by utilizing READs and/or archeologists.
- Avoid application of retardant within 300 feet of stream channels and water ways.
- Coordinate and communicate fire information with the public and all stakeholders.
- Coordinate, develop and implement fire suppression repair.
- Support local unit initial attack as requested.

6. Weather Forecast for Period

WEATHER: Partly sunny with a chance of showers in the afternoon and evening.

TEMPERATURES: 72 to 78 degrees F

MIN HUMIDITY: 32 to 38%

WINDS (EYE LEVEL): RIDGETOPS: Southeast 2 to 5 mph becoming Southwest 3 to 6 mph with gusts to 10 mph in the evening. Upslope upcanyon winds 2 to 5 mph.

7. General Safety Message

Rain is forecast for the fire. Anticipate extremely slippery conditions when driving on any road that is not a "main" hard packed gravel road; particularly Beaver Creek Road, and personnel and crew bus shuttles going into and coming out of drop points 10&13.

See attached for additional information

8. Attachments (mark if attached)

- | | | |
|---|---|--|
| <input checked="" type="checkbox"/> Incident Objectives – ICS 202 | <input checked="" type="checkbox"/> Division Assignment List – ICS 204 | <input checked="" type="checkbox"/> Medical Plan - ICS 206 |
| <input checked="" type="checkbox"/> Organization List - ICS 203 | <input checked="" type="checkbox"/> Safety Message | <input checked="" type="checkbox"/> Human Resource Message |
| <input checked="" type="checkbox"/> Fire Weather Forecast | <input checked="" type="checkbox"/> Incident Safety Analysis – ICS 215A | <input checked="" type="checkbox"/> Camp Map |
| <input checked="" type="checkbox"/> Fire Behavior Forecast | <input checked="" type="checkbox"/> Air Ops Summary – ICS 220 | <input checked="" type="checkbox"/> Transportation |
| <input checked="" type="checkbox"/> Trainee Data Form | <input checked="" type="checkbox"/> Communications Plan - ICS 205 | <input checked="" type="checkbox"/> Unit Log – ICS 214 |

9. Prepared by (Planning Section Chief)

Marsha Henderson 

10. Approved by (Incident Commander)

Tom Kurth 

**CS Form 203
ORGANIZATION ASSIGNMENT LIST**

1. INCIDENT NAME Stuart Creek 2	2. DATE PREPARED 7-17-13	3. TIME PREPARED 1800
---	------------------------------------	---------------------------------

5. INCIDENT COMMAND STAFF
AK Green Team

Position	Name
INCIDENT COMMANDER	Tom Kurth
DEPUTY	
SAFETY OFFICER	Tom Grelling
INFORMATION OFFICER	Gary Lenhausen / Maureen Clark (t)
LIAISON OFFICER	
HUMAN RESOURCE SPECIALIST	

4. OPERATIONAL PERIOD (DATE/TIME)
7-18-13 0800-2200

6. AGENCY REPRESENTATIVES

AGENCY	NAME
US Army	Col. Johnson
US Air Force	Maj. Tutty
Eastern Area IARR	To / Oliver / Clark / Greaves
Alaska State Parks	Ian Thomas
Alaska Fire Service	Randy Lenon
Fairbanks N.Star Borough	Dave Gibbs
Alaska DNR	Gordon Amundson
Alaska State Troopers	Capt. Barrick

9. OPERATIONS SECTION

CHIEF	H. Smith / E. Sanford (t) / B. Peterson (t)	
PLANNING OPS		
DEPUTY OPS		
a. BRANCH I		
BRANCH DIR		
GROUP		
DIVISION	M/N	Karen Scholl / Lokota Burwell (t)
DIVISION	P	Dirk Giles / Matt Robinett (t)
DIVISION	R	M. Corley / Jeff Cramer (t)
DIVISION	S	Tamar Young /Randy Foland (t)
DIVISION	A	David Bloemaker / Phil OoSahwe (t)
DIVISION	B/C/F	J. Sullivan/ Jon Holmes (t)

7. PLANNING SECTION

CHIEF	Marsha Henderson
CHIEF	
RESOURCES UNIT	Al Yanagisawa / Mike Butteri (t)
SITUATION UNIT	Adam Kohley/Joe Johndreau(t)
STRATEGIC OPS PLANNER	
DEMobilIZATION UNIT	Jennifer Barnes
CTSP	Bill Beach
TNSP	
FBAN / LTAN	Robert Ziel / Tom St. Clair (t)
IMET	Andy Haner/Christian Cassell(t)
GISS	
READ	Buzby / Rees
Range Control	(Day) Beck / (Night) Stepp

b. BRANCH III

BRANCH DIRECTOR		
DIVISION	K/L	John Glover/ D. Disanto (t)
GROUP	REHAB	C. Winfrey
DIVISION		
DIVISION		
DIVISION		
DIVISION		

8. LOGISTICS SECTION

CHIEF	Janet Ladd / Jerri Webster
CHIEF	
a. SUPPORT BRANCH	
SUPPLY UNIT	Karl Meitzner
FACILITIES UNIT	
GROUND SUPPORT UNIT	Rusty Hippchen / Will Hutto (t)
b. SERVICE BRANCH	
COMMUNICATIONS UNIT	Jordan Halden
COMMUNICATIONS MANG	
FOOD UNIT	Jim Hush
RECEIVING	Amber Rosser
ORDERING	Jenn Northway
MEDICAL UNIT	Terry Solomon

c. BRANCH -

FIREBIRD STG	STAGING	Kelly Helget

d. AIR OPERATIONS BRANCH

AIR OPERATIONS BR. DIR.	
AIR TACTICAL GROUP SUP.	Gary Mullen
AIR SUPPORT GROUP SUP	
HELICOPTER COORDINATOR	

PREPARED BY (RESOURCES UNIT)
Al Yanagisawa/ Mike Butteri (t)

10. FINANCE/ADMINISTRATION SECTION

CHIEF	Mari Witt
CHEIF	
TIME UNIT	
PERSONAL TIME	
COMPENSATION/CLAIMS UNIT	
COST UNIT	
EQUIPMENT TIME	



Stuart Creek #2 Fire Weather Forecast



FORECAST NO: 13
PREDICTION FOR: Thursday 18 July 2013

NAME OF FIRE: Stuart Creek #2
UNIT: MID

SHIFT DATE: July 17th, 2013

Incident Meteorologist:
Andy Haner
Christian Cassell (T)

FORECAST ISSUED: 2000 ADT July 17th, 2013

WEATHER DISCUSSION: Thursday will bring warm and drier weather with light winds to the incident before widespread rain and stronger winds move into the region Thursday night and last into Friday. Precipitation amounts may total more than one-half inch across the entire incident. Strong west-southwest winds will be accompanied by high relative humidity which should help negate any fire weather potential.

WEATHER FORECAST THURSDAY SHIFT:

WEATHER: Partly sunny. A chance of showers in the afternoon and evening.
TEMPERATURES: 72 to 78 (+6)
MIN HUMIDITY: 32 to 38% (-15)
WINDS (EYE LEVEL): RIDGETOPS: Southeast 2 to 5 mph becoming Southwest 3 to 6 mph with gusts to 10 mph in the evening. UPSLOPE/UPVALLEY winds 2 to 5 mph.
CHANCE OF WETTING RAINS: 10%
LAL: 1

WEATHER FORECAST THURSDAY NIGHT:

WEATHER: Rain developing.
MIN TEMPERATURES: 49 to 55.
MAX HUMIDITY: 85 to 100%
WINDS (EYE LEVEL): RIDGETOPS: West-Southwest increasing to 8 to 13 mph with gusts to 20 mph by morning. NORTH-SOUTH VALLEYS: South wind 3 to 7 mph.
CHANCE OF WETTING RAINS: 80%
LAL: 1

OUTLOOK FOR FRIDAY:

WEATHER: Rain in the morning. A chance of showers in the afternoon.
TEMPERATURES: 62 to 69 (-8)
MIN HUMIDITY: 60 to 75% (+28)
WINDS (EYE LEVEL): RIDGETOPS: West to Southwest wind 10 to 15 mph with gusts to 25 mph.
NORTH-SOUTH VALLEYS: South wind 3 to 7 mph.
CHANCE OF WETTING RAINS: 80%
LAL: 1

EXTENDED FORECAST FOR SATURDAY through SUNDAY:

Mostly cloudy skies with isolated to scattered showers should allow minimum RHs to remain above 40 percent through the weekend. Winds will be brisk out of the West and Southwest.

Sunrise Thursday: 0402 AKDT Sunset Thursday: 2349 AKDT
Wednesday Observation summary at Stuart Creek RAWS (midnight through 1800):
Max T: 68
Min RH: 54
Max Wind: SW 07 G13 mph
Rain Accumulation (0000 – 2000): 0.01"

FIRE BEHAVIOR FORECAST

FORECAST NUMBER: # 16	TYPE OF FIRE: Wildfire
FIRE NAME: Stuart Creek #2	OPERATIONAL PERIOD: Day – July 18, 2013
DATE ISSUED: 07/17/13	TIME ISSUED: 2000 hrs
UNIT: BLM-AFS	SIGNED: Tom St. Clair FBAN(T)

WEATHER SUMMARY:

Partly Sunny. High Temperature: 70 to 78 degrees Minimum RH: 32-38%
Winds (Eye Level): RIDGETOPS: Southeast 2 to 5 mph. SHELTERED VALLEYS: Upslope/upvalley winds 2 to 5 mph. Wind: SE 3 mph.

See attached Fire Weather Forecast for more details.

Take weather observations, and call in hourly to Communications. Please include location and elevation.

FIRE BEHAVIOR

GENERAL:

Warmer and drier than the past two days. Potential for fire to spread in uncontained areas retaining heat today.

Manchu RAWS Predicted Fire Weather Indices FFMC 89.3, DMC 73.6, DC 384.9, ISI 5.3, BUI 99.6, FWI 20.2

Majority of the fuels around the fire and within Spruce/Hardwood mix worst case scenario:

FL Head: Up to 3'
ROS Head: Up to 12 ch/hr

Continuous Black Spruce worst case scenario:

FL Head: Up to 9'
ROS Head: Up to 27 ch/hr

Spotting distance: .2 miles

Probability of ignition: 90%

SPECIFIC:

Divisions B, C, F: Fire will generally fester in place today where it has been the last couple of days. Torching and small runs are possible in areas of continuous spruce.

K, L: Smoldering and low flame lengths. Potential for interior torching,

Divisions M, N, and P: Potential for torching and short runs in interior spruce. Look for areas of previously hidden heat to show today. Jackstrawed trees, slash piles, or dozer berms that have been smoldering will have a tendency to flame up.

Division R: Smoldering in isolated areas. Flames and torching interior.

Division S, A: Fire will continue to move down towards South Fork Chena. Undetected spot fires are likely to show themselves when RH gets into the 30s. Torching and short range spotting is likely. If a spot fire becomes established in spruce on the steep slopes on the east side of the South Fork Chena up slope runs are a possibility.

AIR OPERATIONS:

Many burned trees have burned out roots be careful of falling snags near air drops.

SAFETY

Standard Firefighting Order #1: Keep informed on weather conditions and forecasts. Extended day length in the Northern Latitudes allows fuels to dry quickly when rains and clouds come to an end.

Division Assignment List	1. Branch	2. Division/Group M/N
---------------------------------	-----------	---------------------------------

3. Incident Name MID Stuart Creek 2	4. Operational Period 07/18/13 Thursday DAY Shift 0800 - 2200
--	--

5. Operations Personnel

Operations Chief	H. SMITH/ E. SANFORD (t)	Division/Group	K. SCHOLL/ L. BURWELL (t)
Operations Chief	B. PETERSON (t)	Air Attack Supervisor	GARY MULLEN
Branch Director		Safety Officer	TOM GREILING

6. Resources Assigned this Period

Strike Team/Task Force/ Resource Designator	Leader	Num of Pers.	Trans. Y/N	Drop Off PT./Time	Pick Up PT./Time
CREW T2IA MHR # 1 7/20	PAUL SMITH	20	N	FB SPIKE 0800	FB SPIKE 2200
CREW - T2IA - MOF#2 7/20	COBER, WILLIAM JOHN	16	N	FB SPIKE 0800	FB SPIKE 2200
CREW T2 ALLAKAKET #2 7/30	R. MOSES, H. MOSES (t)	16	N	FB SPIKE 0800	FB SPIKE 2200
CREW T2 NONDALTON#1 7/30	TREFON, CHUCK N	16	N	FB SPIKE 0800	FB SPIKE 2200
DOZ BLACK GOLD E-207 7/20	R. PACKER	1	N	FB SPIKE 0800	FB SPIKE 2200
W/T 85 EIELSON AFB		1	N	FB SPIKE 0800	FB SPIKE 2200
W/T CHIPS 1 E-18	ZACK STOCKTON	1	N	FB SPIKE 0800	FB SPIKE 2200
SKIDGINE - SOFT TRACK E- 61	JOSH COVEY	1	N	FB SPIKE 0800	FB SPIKE 2200
SKIDGINE - SOFT TRACK E-297	CALEB COVEY	1	N	FB SPIKE 0800	FB SPIKE 2200
TFLD	JOEL SATHER 7/22	1	N	FB SPIKE 0800	FB SPIKE 2200
TFLD (t)	ISAAC SOLOMAN 7/19	1	N	FB SPIKE 0800	FB SPIKE 2200
EMT (IMS-M)	MILLIE CARSON 7/19	1	N	FB SPIKE 0800	FB SPIKE 2200
EMT (IMS-T)	PATRICK TOLAND 7/19	1	N	FB SPIKE 0800	FB SPIKE 2200
SOFR	CARY BROWN 7/18	1	N	FB SPIKE 0800	FB SPIKE 2200
HEQB	CHRIS YORK	1	N	FB SPIKE 0800	FB SPIKE 2200

7. Control Operations
Mop up 100' in from Div M to Div N. Mop up all spot fires 100%. Backhaul all excess equipment and supplies.

8. Special Instructions
ALL LINE ORDERS WILL BE ORDERED THROUGH 'FIREBIRD SPIKE'. Prepare gear and supplies for spike camp. Keep from previous day. When observable ordnance are encountered, leave them intact, **DO NOT TOUCH**, contact DIVS and Range Control.
When observable cultural resources are encountered, leave them intact and document location. Notify READ.
Only aviation resources will be used within impact areas, except on hardened roads coordinated with military Explosive Ordnance Disposal (EOD) range control personnel. 1 mile buffer added to limited entry area.
Note location of damaged electrical infrastructure and notify DIV.

9. Division/Group Communications Summary

Function	Frequency - RX	Frequency - TX	Tone	System	Channel	System	Channel
Command	170.0125N	165.2500N	123.0	NIFC	3		
Tactical	168.0500N	168.0500N		NIFC	4		
Logistics							
Air to Ground	169.1500N	169.1500N		NIFC	12		

Prepared by (Resource Unit Leader) Al Yanagisawa/ M. Butteri (t)	Approved by (Planning Section Chief) Marsha Henderson <i>[Signature]</i>	Date Prepared 07/17/13	Time Prepared 2200
---	---	---------------------------	-----------------------

Division Assignment List	1. Branch	2. Division/Group P
---------------------------------	-----------	-------------------------------

3. Incident Name MID Stuart Creek 2	4. Operational Period 07/18/13 Thursday DAY Shift 0800 - 2200
--	--

5. Operations Personnel

Operations Chief	H. SMITH / E SANFORD (t)	Division/Group	D. GILES / M. ROBINETT (t)
Operations Chief	B. PETERSON (T)	Air Attack Supervisor	G. MULLEN
Branch Director		Safety Officer	T. GREILING

6. Resources Assigned this Period

Strike Team/Task Force/ Resource Designator	Leader	Num of Pers.	Trans. Y/N	Drop Off PT./Time	Pick Up PT./Time
CREW T2IA MDS # 1 7/20	BRIAN STUPAK	20	N	PAPA 1 SPIKE 0800	PAPA 1 SPIKE 2200
CREW T2IA DES # 1 7/20	ERICH BURKENTINE	20	N	PAPA 1 SPIKE 0800	PAPA 1 SPIKE 2200
CREW T2 NORTHSTARS 7/20	MACKER BABB	19	N	PAPA 1 SPIKE 0800	PAPA 1 SPIKE 2200
CREW T2 CHEVAK#1 7/30	NORATAK, XAVIER R.	17	N	PAPA 1 SPIKE 0800	PAPA 1 SPIKE 2200
STLC	DALE WOITAS 7/25	1	N	PAPA 1 SPIKE 0800	PAPA 1 SPIKE 2200
STLC	CHRIS MOORE 7/25	1	N	PAPA 1 SPIKE 0800	PAPA 1 SPIKE 2200
STLC	ANDRES OROZEO (t)	1	N	PAPA 1 SPIKE 0800	PAPA 1 SPIKE 2200
TFLD	KAY KUDO 7/18	1	N	PAPA 1 SPIKE 0800	PAPA 1 SPIKE 2200
SOFR	JAYSON SMITH 7/18	1	N	PAPA 1 SPIKE 0800	PAPA 1 SPIKE 2200
EMTF	PHIL GROSSARTH 7/25	1	N	PAPA 1 SPIKE 0800	PAPA 1 SPIKE 2200

7. Control Operations
 Mop Up 100' in for the entire Division.
 Backhaul all excess equipment and supplies.
 Identify Medivac sites and send coordinates to the Situation Unit.

8. Special Instructions
 ALL LINE ORDERS WILL BE ORDERED THROUGH 'FIREBIRD SPIKE'
 When observable ordnance are encountered, leave them intact, DO NOT TOUCH, contact DIVS and Range Control.
 When observable cultural resources are encountered, leave them intact and document location. Notify READ.
 Only aviation resources will be used within impact areas, except on hardened roads coordinated with military Explosive Ordnance Disposal (EOD) range control personnel. 1 mile buffer added to limited entry area.

9. Division/Group Communications Summary

Function	Frequency - RX	Frequency - TX	Tone	System	Channel	System	Channel
Command	168.1000N	170.4500N	123.0	NIFC	1		
Tactical	168.2500N	168.2500N		NIFC	7		
Logistics							
Air to Ground	169.1500N	169.1500N		NIFC	12		

Prepared by (Resource Unit Leader) Al Yanagisawa / Mike Butteri (t)	Approved by (Planning Section Chief) Marsha Henderson	Date Prepared 07/17/13	Time Prepared 0811
--	--	---------------------------	-----------------------

Division Assignment List	1. Branch	2. Division/Group R
---------------------------------	-----------	-------------------------------

3. Incident Name MID Stuart Creek 2	4. Operational Period 07/18/13 Thursday DAY Shift 0800 - 2200
--	--

5. Operations Personnel

Operations Chief	H. SMITH/ E. SANFORD (t)	Division/Group	M. CORLEY/ JEFF CRAMER (t)
Operations Chief	B. PETERSON (t)	Air Attack Supervisor	GARY MULLEN
Branch Director		Safety Officer	TOM GREILING

6. Resources Assigned this Period

Strike Team/Task Force/ Resource Designator	Leader	Num of Pers.	Trans. Y/N	Drop Off PT./Time	Pick Up PT./Time
WHISKEYTOWN WFM 7/21	ERIC NEISWANGER	8	N	LION SPIKE 0800	LION SPIKE 2200
CREW T2IA MOF # 1 7/20	SEAN FLANAGAN	20	N	LION SPIKE 0800	LION SPIKE 2200
CREW T2 BUCKLAND 7/30	JOHN, THEODORE	16	N	LION SPIKE 0800	LION SPIKE 2200
ENG T6 34216 E-212 7/19	LESATZ/ FUSCO	2	N	LION SPIKE 0800	LION SPIKE 2200
ENG T3 33388 E-214 7/19	DALLMAN/ TINGLEY	2	N	LION SPIKE 0800	LION SPIKE 2200
JUMPER BOAT E-38	YEAGER /M. CORLEY	1	N	LION SPIKE 0800	LION SPIKE 2200
ZODIAK 6	BRIAN KIRKMAN 7/20	1	N	LION SPIKE 0800	LION SPIKE 2200
ZODIAK 7	DIBERT/ O'BRIEN	1	N	LION SPIKE 0800	LION SPIKE 2200
FOBS	TIMOTHY EPP	1	N	LION SPIKE 0800	LION SPIKE 2200
FOBS	COLLINS BONDS	1	N	LION SPIKE 0800	LION SPIKE 2200
SOFR	D. CARR 7/31	1	N	LION SPIKE 0800	LION SPIKE 2200
EMTF	ISABEL IBABAO	1	N	LION SPIKE 0800	LION SPIKE 2200
EMTF	ROBERT HELENA	1	N	LION SPIKE 0800	LION SPIKE 2200

7. Control Operations.
Mop up 100' in entire Div. Backhaul all excess equipment and supplies.
Identify medivac sites and send coordinates to the Situation Unit Leader.
Identify Spike Camp and send coordinates to the Situation Unit Leader.

8. Special Instructions

When observable ordnance are encountered, leave them intact, DO NOT TOUCH, contact DIVS and Range Control.
When observable cultural resources are encountered, leave them intact and document location. Notify READ.
Only aviation resources will be used within impact areas, except on hardened roads coordinated with military Explosive Ordnance Disposal (EOD) range control personnel. 1 mile buffer added to limited entry area.
Return all nets to Helibase.

9. Division/Group Communications Summary

Function	Frequency - RX	Frequency - TX	Tone	System	Channel	System	Channel
Command	170.0125N	165.2500N	123.0	NIFC	3		
Tactical	168.2000N	168.2000N		NIFC	5		
Logistics							
Air-to-Ground	169.1500N	169.1500N		NIFC	12		

Prepared by (Resource Unit Leader) AI Yanagisawa/ Mike Butteri (t)	Approved by (Planning Section Chief) Marsha Henderson	Date Prepared 07/17/13	Time Prepared 2200
---	--	---------------------------	-----------------------

Division Assignment List	1. Branch	2. Division/Group
		S

3. Incident Name MID Stuart Creek 2	4. Operational Period 07/18/13 Thursday DAY Shift 0800 - 2200
--	--

5. Operations Personnel

Operations Chief	H. SMITH/ E. SANFORD (t)	Division/Group	TAMAR YOUNG/ R. FOLAND (t)
Operations Chief	B. PETERSON (t)	Air Attack Supervisor	GARY MULLEN
Branch Director		Safety Officer	TOM GREILING

6. Resources Assigned This Period

Strike Team/Task Force/ Resource Designator	Leader	Num of Pers.	Trans. Y/N	Drop Off PT./Time	Pick Up PT./Time
WENATCHEE RAPPELERS	CASEY WOODWARD	5	N	LION SPIKE 0800	LION SPIKE 2200

7. Control Operations
 Identify Spike Camp and send coordinates to the Situation Unit Leader.
 Use air support to keep fire west of the South Fork Chena River.
 Identify strategic helispots and send the coordinates to the Situation Unit Leader.
 Send hourly Wx observations to Communications.
 Supply orders through Fire Bird Spike.
 Coordinate fire behavior info to Div A

8. Special Instructions
 When observable ordnance are encountered, leave them intact, DO NOT TOUCH, contact DIVS and Range Control.
 When observable cultural resources are encountered, leave them intact and document location. Notify READ.
 Only aviation resources will be used within impact areas, except on hardened roads coordinated with military Explosive Ordnance Disposal (EOD) range control personnel. 1 mile buffer added to limited entry area. Review pump safety.

9. Division/Group Communications Summary

Function	Frequency - RX	Frequency - TX	Tone	System	Channel	System	Channel
Command	170.0125N	165.2500N	123.0	NIFC	3		
Tactical	166.7250N	166.7250N		NIFC	6		
Logistics							
Air to Ground	169.1500N	169.1500N		NIFC	12		

Prepared by (Resource Unit Leader) AI Yanagisawa/ Mike Butteri (t)	Approved by (Planning/Section Chief) Marsha Henderson <i>[Signature]</i>	Date Prepared 07/17/13	Time Prepared 2200
---	---	---------------------------	-----------------------

Division Assignment List	1. Branch	2. Division/Group A
---------------------------------	-----------	-------------------------------

3. Incident Name MID Stuart Creek 2	4. Operational Period 07/18/13 Thursday DAY Shift 0800 - 2200
--	--

5. Operations Personnel

Operations Chief	H. SMITH/ E. SANFORD (t)	Division/Group	D. BLOEMAKER/ P. OOSHAHWE (t)
Operations Chief	B. PETERSON (t)	Air Attack Supervisor	GARY MULLEN
Branch Director		Safety Officer	TOM GREILING

6. Resources Assigned this Period

Strike Team/Task Force/ Resource Designator	Leader	Num of Pers.	Trans. Y/N	Drop Off PT./Time	Pick Up PT./Time
CREW T1 MIDNIGHT SUN IHC 7/18	JACOB B LIVINGSTON	19	N	ALPHA SPIKE 0800	ALPHA SPIKE 2200
CREW T1 CHENA IHC 7/23	CHRIS MARABETTA	20	N	ALPHA SPIKE 0800	ALPHA SPIKE 2200
CREW T2IA PAS # 1 7/20	JOHN HECKER	20	N	ALPHA SPIKE 0800	ALPHA SPIKE 2200
SOFR	RONALD McDOLE	1	N	ALPHA SPIKE 0800	ALPHA SPIKE 2200
EMTF	CARMELLA BAUMAN 7/20	1	N	ALPHA SPIKE 0800	ALPHA SPIKE 2200
EMTF	DAVID MOLTER 7/20	1	N	ALPHA SPIKE 0800	ALPHA SPIKE 2200

7. Control Operations
Mop up spot fires 100' in. Scout fire perimeter to the north towards DIV. S.

8. Special Instructions
 *Supply orders through Firebird Spike.
 *Identify Spike Camp and Medivac Sites and send the coordinates to the Situation Unit Leader.
 When observable ordnance are encountered, leave them intact, **DO NOT TOUCH**, contact DIVS and Range Control.
 When observable cultural resources are encountered, leave them intact and document location. Notify READ.
 Only aviation resources will be used within impact areas, except on hardened roads coordinated with military Explosive Ordnance Disposal (EOD) range control personnel. 1 mile buffer added to limited entry area.

9. Division/Group Communications Summary

Function	Frequency - RX	Frequency - TX	Tone	System	Channel	System	Channel
Command	170.0125N	165.2500N	123.0	NIFC	3		
Tactical	168.0500N	168.0500N		NIFC	4		
Logistics							
Air to Ground	169.1500N	169.1500N		NIFC	12		

Prepared by (Resource Unit Leader) A. Yanagisawa / Mike Butteri (t)	Approved by (Planning Section Chief) Marsha Henderson	Date Prepared 07/17/13	Time Prepared 0812
--	--	---------------------------	-----------------------

Division Assignment List	1. Branch	2. Division/Group B/C/F
---------------------------------	-----------	-----------------------------------

3. Incident Name MID Stuart Creek 2	4. Operational Period 07/18/13 Thursday DAY Shift 0800 - 2200
--	--

5. Operations Personnel

Operations Chief	H. SMITH/ E. SANFORD (t)	Division/Group	J. SULLIVAN/ J. HOLMES (t)
Operations Chief	B. PETERSON (t)	Air Attack Supervisor	G. MULLEN
Branch Director		Safety Officer	T. GREILING

6. Resources Assigned This Period

Strike Team/Task Force/ Resource Designator	Leader	Num of Pers.	Trans. Y/N	Drop Off PT./Time	Pick Up PT./Time
CREW T2 UPPER KALSKAG 7/18	JEFF KERR	16	N	FB SPIKE 0800	FB SPIKE 0800
CREW T2 ST. MARY'S 7/18	LARRY OLIN	16	N	FB SPIKE 0800	FB SPIKE 0800
ENG BR 941	SCOTT THOMPSON	2	N	FB SPIKE 0800	FB SPIKE 0800
ENG BR 940	MARC HARASTI	2	N	FB SPIKE 0800	FB SPIKE 0800
ENG BR 942 E-260	GORDON HILL	2	N	FB SPIKE 0800	FB SPIKE 0800
ENG FORT GREELEY ENG 20	PLUMBLY	2	N	FB SPIKE 0800	FB SPIKE 0800
W/T CHIPS # 2 E-19	CHIP STOCKTON	1	N	FB SPIKE 0800	FB SPIKE 0800
SKIDG FAIRBANKS CONST # 1 7/16	RICHARD BIENVENUE	1	N	FB SPIKE 0800	FB SPIKE 0800
TFLD	BURWICK/ KEMERY	2	N	FB SPIKE 0800	FB SPIKE 0800
SOFR	K. LEMKE	1	N	FB SPIKE 0800	FB SPIKE 0800
EMT (IMS-M)	SHANE POWERS	1	N	FB SPIKE 0800	FB SPIKE 0800
EMT (IMS-T)	EVAN STERLING	1	N	FB SPIKE 0800	FB SPIKE 0800

7. Control Operations
 Point protection on Camera #1 and #2.
 Protect military assets.
 Keep/Hold fire north of the Quarry and Brigadire Roads.

8. Special Instructions
 When observable ordnance are encountered, leave them intact, **DO NOT TOUCH**, contact DIVS and Range Control.
 When observable cultural resources are encountered, leave them intact and document location. Notify READ.
 Only aviation resources will be used within impact areas, except on hardened roads coordinated with military Explosive Ordnance Disposal (EOD) range control personnel. 1 mile buffer added to limited entry area.
 Mop up all spot fires south of Quarry Road.
 Coordinate with Range Control on fire activity, power lines, and asset protection.

9. Division/Group Communications Summary

Function	Frequency - RX	Frequency - TX	Tone	System	Channel	System	Channel
Command	170.1000N	162.1625N		NIFC	2		
Tactical	168.2500N	168.2500N		NIFC	7		
Logistics							
Air to Ground	169.1500N	169.1500N		NIFC	12		

Prepared by (Resource Unit Leader) Al Yanagisawa / Mike Butteri(t)	Approved by (Planning Section Chief) Marsha Henderson	Date Prepared 07/17/13	Time Prepared 2200
---	--	---------------------------	-----------------------

Division Assignment List	1. Branch	2. Division/Group
		K/L

3. Incident Name MID Stuart Creek 2	4. Operational Period 07/18/13 Thursday DAY Shift 0800 - 2200
--	--

5. Operations Personnel			
Operations Chief	H. SMITH/ E. SANFORD (t)	Division/Group	JOHN GLOVER/ D. DISANTO (t)
Operations Chief	B. PETERSON (t)	Air Attack Supervisor	GARY MULLEN
Branch Director		Safety Officer	TOM GREILING

6. Resources Assigned this Period					
Strike Team/Task Force/ Resource Designator	Leader	Num of Pers.	Trans. Y/N	Drop Off PT./Time	Pick Up PT./Time
CREW T2IA PAS # 2 7/20	DAVID E FELIX	20	N	FB SPIKE 0800	FB SPIKE 0800
CREW T2IA GMF # 1 7/20	HAROLD SMITH	20	N	FB SPIKE 0800	FB SPIKE 0800
EMPF	POWERS, SHANE	1	N	FB SPIKE 0800	FB SPIKE 0800
EMTF	EVAN STERLING	1	N	FB SPIKE 0800	FB SPIKE 0800

7. Control Operations
Mop up 100' in. Backhaul all excess equipment and supplies. Coordinate with Rehab Group.

8. Special Instructions
ALL LINE ORDERS WILL BE ORDERED THROUGH 'FIREBIRD SPIKE'
When observable ordnance are encountered, leave them intact, **DO NOT TOUCH**, contact DIVS and Range Control.
When observable cultural resources are encountered, leave them intact and document location. Notify READ.
Only aviation resources will be used within impact areas, except on hardened roads coordinated with military Explosive Ordnance Disposal (EOD) range control personnel. 1 mile buffer added to limited entry area.

9. Division/Group Communications Summary							
Function	Frequency - RX	Frequency - TX	Tone	System	Channel	System	Channel
Command	168.1000N	170.4500N	123.0	NIFC	1		
Tactical	166.7250N	166.7250N		NIFC	6		
Logistics							
Air to Ground	169.1500N	169.1500N		NIFC	12		

Prepared by (Resource Unit Leader) AL Yanagisawa/ Mike Butteri (t)	Approved by (Planning Section Chief) Marsha Henderson 	Date Prepared 07/17/13	Time Prepared 2200
---	--	---------------------------	-----------------------

Division Assignment List	1. Branch	2. Division/Group Rehab Group
---------------------------------	-----------	---

3. Incident Name MID Stuart Creek 2	4. Operational Period 07/18/13 Thursday DAY Shift 0800 - 2200
--	--

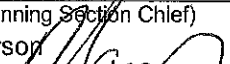
5. Operations Personnel			
Operations Chief	H. SMITH / E. SANDFORD(t)	Division/Group Supervisor	C. WINFREY
Operations Chief	B. PETERSON (t)	Air Attack Supervisor	G. MULLEN
Branch Director		Safety Officer	T. GREILING

6. Resources Assigned This Period					
Strike Team/Task Force/ Resource Designator	Leader	Num of Pers.	Trans. Y/N	Drop Off PT./Time	Pick Up PT./Time
EXCAVATOR - WV BUILDERS E-309		1	N	FB SPIKE / 0800	FB SPIKE / 2200
EXCAVATOR - FBK CONST E-322		0	N	FB SPIKE / 0800	FB SPIKE / 2200
DOZ REMOTE 1 E-205		1	N	FB SPIKE / 0800	FB SPIKE / 2200
DOZER - T2 - STONE BOY E-294		2	N	FB SPIKE / 0800	FB SPIKE / 2200
DOZER D6C - HOWARD E-265		2	N	FB SPIKE / 0800	FB SPIKE / 2200
TFLD	S. REEDY 7/25	1	N	FB SPIKE / 0800	FB SPIKE / 2200
HEQB	T. MORRIS	1	N	FB SPIKE / 0800	FB SPIKE / 2200
TFLD	B. GLASSBY	1	N	FB SPIKE / 0800	FB SPIKE / 2200
TFLD(t)	M. SNYDER	1	N	FB SPIKE / 0800	FB SPIKE / 2200
SOFR	L. WELSH	1	N	FB SPIKE / 0800	FB SPIKE / 2200

7. Control Operations
 Rehab line in Div F.
 Rehab dozerline in Div K.
 Coordinate with Division Supervisors and Resource Advisors Dan Rees and Josh Buzby.

8. Special Instructions

9. Division/Group Communications Summary							
Function	Frequency - RX	Frequency - TX	Tone	System	Channel	System	Channel
Command	168.1000N	170.4500N	123.0	NIFC	1		
Tactical Div/Group	168.2000N	168.2000N		NIFC	5		
Logistics							
Air to Ground	169.1500N	169.1500N		NIFC	12		

Prepared by (Resource Unit Leader) AI Yanagisawa / Mike Butteri (t)	Approved by (Planning Section Chief) Marsha Henderson 	Date Prepared 07/17/13	Time Prepared 1948
--	--	---------------------------	-----------------------

Division Assignment List		1. Branch	2. Division/Group Firebird Spike Staging
---------------------------------	--	-----------	--

3. Incident Name MID Stuart Creek 2	4. Operational Period 07/18/13 Thursday DAY Shift 0800 - 2200
--	--

5. Operations Personnel

Operations Chief	H. SMITH / E. SANFORD (t)	Division/Group	
Operations Chief	B. PETERSON (t)	Air Attack Supervisor	G. MULLEN
Branch Director		Safety Officer	T. GREILING

6. Resources Assigned This Period

Strike Team/Task Force/ Resource Designator	Leader	Num of Pers.	Trans. Y/N	Drop Off PT./Time	Pick Up PT./Time
STAM	KELLY HELGET 7/19	1	N	FB SPIKE 0800	FB SPIKE 2200
TRANSPORT HUBBARD E-239		1	N	FB SPIKE 0800	FB SPIKE 2200
LOWBOY E-326		1	N	FB SPIKE 0800	FB SPIKE 2200
WT MIDSTATE T2 E-20	COTTON, JUSTIN	1	N	FB SPIKE 0800	FB SPIKE 2200
WT BLACK GOLD E-222		1	N	FB SPIKE 0800	FB SPIKE 2200
WT GOLDSTREAM T2 E-5		1	N	FB SPIKE 0800	FB SPIKE 2200
SKIDG FAIRBANKS CONST #2 E-63	RUSSELL CAMP	1	N	FB SPIKE 0800	FB SPIKE 2200
EMT	TERRI BERRIE 7/20	1	N	FB SPIKE 0800	FB SPIKE 2200
EMTP	TABITHA HUGHES 7/20	1	N	FB SPIKE 0800	FB SPIKE 2200

7. Control Operations
 Rehab line Div. F. Coordinate with DIVS. Rehab dozer line in Div. K. Corodinate with Div. S, READ Dan Rees, and READ Josh Buzby.

8. Special Instructions
 ALL LINE ORDERS WILL BE ORDERED THROUGH 'FIREBIRD SPIKE'
 When observable ordnance are encountered, leave them intact, DO NOT TOUCH, contact DIVS and Range Control.
 When observable cultural resources are encountered, leave them intact and document location. Notify READ.
 Only aviation resources will be used within impact areas, except on hardened roads coordinated with military Explosive Ordnance Disposal (EOD) range control personnel. 1 mile buffer added to limited entry area.

9. Division/Group Communications Summary

Function	Frequency - RX	Frequency - TX	Tone	System	Channel	System	Channel
Command	168.1000N	170.4500N	123.0	NIFC	1		
Tactical							
Logistics							
Air to Ground	169.1500N	169.1500N		NIFC	12		

Prepared by (Resource Unit Leader) AL Yanagisawa / Mike Butteri (t)	Approved by (Planning Section Chief) Marsha Henderson <i>[Signature]</i>	Date Prepared 07/17/13	Time Prepared 2000
--	---	---------------------------	-----------------------

AIR OPERATIONS SUMMARY

1. INCIDENT NAME: Stuart Creek # 2 **PREPARED BY:** Gary Muller, AOBD **DATE/TIME PREPARED:** 7/17/2013 1830 hrs.

2. OPERATIONAL PERIOD DATE: 7/18/2013 **START TIME:** 1000 **END TIME:** 2400 **SUNRISE:** 0403 **SUNSET:** 2344

3. REMARKS (Safety Notes, Hazards, Air Operations, Special Equipment, etc.): 150' Tower erected at Bravo 2
 FIXED WING BE AWARE OF HELIBASE LOCATION
 12 HOUR DUTY DAY RESTRICTIONS FOR TANKERS STARTING
 LADD tower control is operational at this time-use caution with in/out traffic
 Assume roads have wires
 Range Control Freq 125.300, Military Aircraft only in the Impact Zone, Use caution when smoke is heavy and visibility is limited, *Medivac Hospital freq 155.160*

4. Medivac Available on request **5. TFR:** TFR 3/8848 in place. Polygon shape. At and below 5000 feet MSL.

6. PERSONNEL	Phone	7. FREQUENCIES	AM	FM	8. FIXED-WING #/Available/Type/Make-Model/FAA N#/ & Bases: LADD
AOBD: Gary Mullin	(907) 960-1141	AIR/AIR FW: BRIEFING	124.2500 132.0250		Airtankers: T-152, T-155, T-142
ASGS: Ty Miller	(907) 460-7530	AIR/AIR RW:	123.1500		Scoopers: 264,267,885
HLCO:		AIR/GROUND:		Primary 169.1500 Secondary 166.6750	Available at LADD, order direct through UYT Dispatch.

ATGS: Russ Grip (530) 598-4172 COMMAND 1. RX 168.1000 TX 170.4500 RX/TX T-123.0
 AFS Helibase: Tom Schmidt (907) 356-5659 2. RX 170.1000 TX 162.1625 no tone
 3. RX 170.0125 TX 165.2500 RX/TX T-123.0
 HEB1: Jesse Best (406) 212-4822 Firebird Airstrip

Deck: DECK FREQ.: 163.100 ATGS Aircraft: Commander 1010F
 UYT (907) 356-5553 TOLC FREQ.:

9. HELICOPTERS (Use Additional Sheets As Necessary)

FAAN#	T	MAKE	BASE	AVAIL	START	REMARKS	FAAN#	T	MAKE/MODEL	BASE	AVAIL	START	REMARKS
	Y							Y					
	1	Chinook, US Army	LADD	1000	1100	Fly reservation only	361EH	2	Bell 212, Mgr.	Firebird	1000	1030	Potentially reassigned to Ft. Yukon
	1	Blackhawk, U.S. Army	LADD	1000	1100	Fly reservation only	51GLE	3	Bell 206L3, Mgr. 907-750-6670	LADD	0900	0930	Down for Mech. could be up soon.
16920	2	Bell 212, Mgr.	Firebird	1100	1130	Down for Mechanical	399EH	2	Bell 212, Mgr.	Firebird	1000	1030	Local ship
214TH	1	Bell 214, Mgr.	Firebird	1000	1030	CWN	*911CV	3	B-3 A-Star, Mgr.	LADD	1000	1030	Local Ship
							*97HJ	2	Bell 205, Mgr.	Firebird	0900	0930	RAP

Incident Radio Communications Plan	1. Incident Name	2. Operational Period
	MID Stuart Creek 2	07/18/13 Thursday DAY Shift 0800 - 2200

3. Basic Radio Channel Utilization						
Radio Type	Channel	Function	Frequency/Tone		Assignment	Remarks
NIFC	1	CMD 1	RX 168.1000N	TX 170.4500N	COMMAND	POLE HILL Linked with All CMDs
			Transmit 123.0			
NIFC	2	CMD 2	RX 170.1000N	TX 162.1625N	COMMAND	Linked with All CMDs
NIFC	3	CMD 3	RX 170.0125N	TX 165.2500N	COMMAND	Linked with All CMDs
			Transmit 123.0			
NIFC	4	TAC 1	RX 168.0500N	TX 168.0500N	Div A Div M/N	
NIFC	5	TAC 2	RX 168.2000N	TX 168.2000N	Div R Rehab Group	
NIFC	6	TAC 3	RX 166.7250N	TX 166.7250N	Div K/L Div S	
NIFC	7	TAC 4	RX 168.2500N	TX 168.2500N	Div B/C/F Div P	
NIFC	8	CMD 4	RX 170.3625N	TX 163.3875	ICP	STUART CREEK ICP Linked with All CMDs
			Transmit 123.0			
Alaska	10	IA Tac 2	RX 166.7750N	TX 166.7750N	**Reserved for Initial Attack**	Alaska Interagency Initial Attack Tac 2
NIFC	11	IA Tac 1	RX 159.3750N	TX 159.3750N	**Reserved for Initial Attack**	Alaska Interagency Initial Attack Tac 1
NIFC	12	A/G 1	RX 169.1500N	TX 169.1500N	Air to Ground Tactical and Logistical	
NIFC	13	A/G 2	RX 166.6750N	TX 166.6750N	Air to Ground Rotor	
			Transmit 110.9			
NIFC	14	Air Guard	RX 168.625	TX 168.625	All Divisions Emerg Traffic	Emerg Contact with Aviation Resources
			Transmit Tone 110.9			
NIFC	16	Air Guard	RX 168.6250N	TX 168.6250N	All Divisions Emerg Traffic	Emerg Contact with Aviation Resources
			Transmit Tone 110.9			

4. Prepared by (Communications Unit)				5. Date Prepared	6. Time Prepared
Jordan Halden, COML		907.347.7789		07/17/13	0811

HEALTH AND SAFETY MESSAGE

"A moment for SAFETY

Can last a LIFETIME"

INCIDENT: Stuart Creek 2

DATE: 7/18/2013

TIME: 0800-2200

The SAFETY S's:

SNAGS, steep terrain, SNAGS, safety zones, SNAGS, slick roads, SNAGS, sanitation, SNAGS.

Fire Order of the Day – Initiate all actions based on current weather and expected fire behavior

Narrative:

GOOD NEWS- You are doing an outstanding job - keep up the good work with attention to SAFETY!

FATIGUE got you down - take care of yourself. WASH hands often, get the proper rest, so you don't come down with accidents, injuries or illnesses. Remember to continue to: **ASSESS the situation - THINK about proposed action- (maybe get a second opinion), then ACT...**

MILITARY ORDINANCE...If you see something lying on the ground that is strange and metallic, and you didn't drop I, Do Not Touch It! Notify your supervisor.

TRANSPORTATION- roads may be SLICK-, so BUCKLE UP - USE HEADLIGHTS, tap that horn, and GO SLOW. Fire vehicles must clean windshields regularly. Use your CHOCKS when parking on slopes.

RAIN IS FORCASTED... Be prepared! Pack your rain gear, or even a large plastic garbage bag. Make sure you keep dry, and stay warm!

MAKE SURE YOU ARE DRINKING PLENTY OF WATER!

Incident Safety Officer: Tom Greiling



Human Resource Message



ALCOHOL AND NON-PRESCRIPTION DRUG FREE INCIDENT



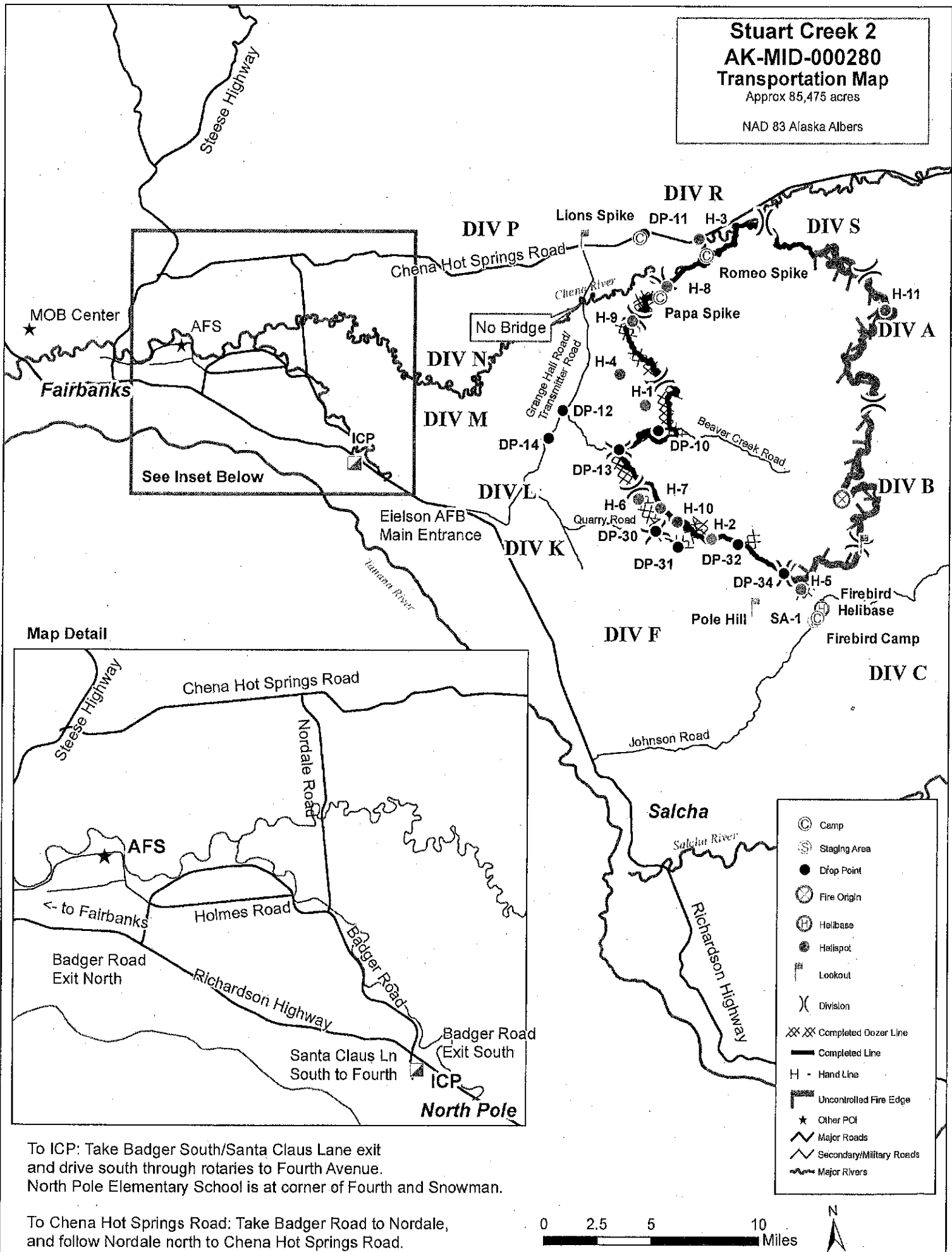
FRESH FOOD ORDER FORM

Fresh food orders need to be called in to Supply at Firebird spike by 1100 today. All Crews and overhead that would like fresh food for Friday July 19^t. 16 person crews order 4 boxes and 20 person crews order 5. You may order any combination of A and B. Division Supervisors please call in orders for your division.

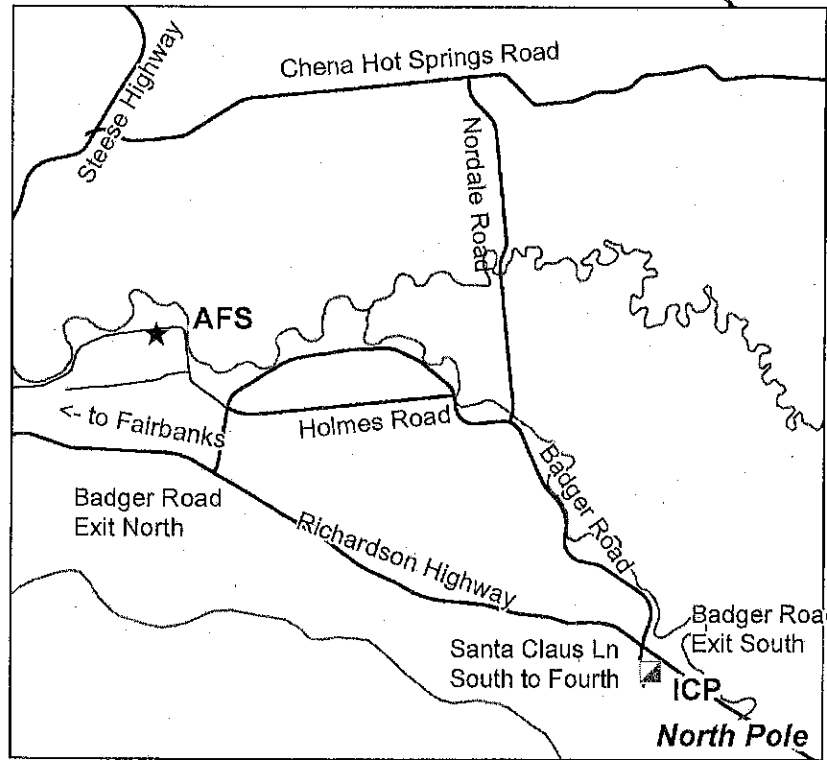
DIVISION _____

CREW NAME/OVERHEAD	BOX A	BOX B

Stuart Creek 2
AK-MID-000280
Transportation Map
 Approx 85,475 acres
 NAD 83 Alaska Albers



Map Detail



To ICP: Take Badger South/Santa Claus Lane exit and drive south through rotaries to Fourth Avenue. North Pole Elementary School is at corner of Fourth and Snowman.

To Chena Hot Springs Road: Take Badger Road to Nordale, and follow Nordale north to Chena Hot Springs Road.

MEDICAL PLAN 206 ICS	1. INCIDENT NAME Stuart Creek 2	2. DATE PREPARED July 17, 2013	3. TIME PREPARED 2000	4. OPERATIONAL PERIOD July 18, 2013 0800-2200
--------------------------------	------------------------------------	-----------------------------------	--------------------------	---

5. INCIDENT MEDICAL AID STATIONS			
MEDICAL AID STATIONS	LOCATION	PARAMEDICS	
		YES	NO
Firebird Camp	Firebird Assault Strip	X	
Line EMTs as assigned	Assigned Divisions	X	X
North Pole ICP	North Pole Elementary School		X

6. TRANSPORTATION				
A. AMBULANCE SERVICES				
NAME	LOCATION	PHONE	PARAMEDICS	
			YES	NO
Eielson AFB	AFB	911 or (907)356-5551	X	
Steese FD Ambulance (Pleasant Valley Area)	Pleasant Valley, AK	911 or (907)450-6507	X	

B. INCIDENT AMBULANCES			
NAME	LOCATION	PARAMEDICS	
		YES	NO
Ft Wainwright FD Ambulance (ground)	Branch III(Day) Firebird Spike(Night) (907)529-9905	X	

C. MEDIVAC SERVICES					
NAME	LOCATION	PHONE	Hoist	ALS	BLS
Evergreen Medivac (Type 2 Helicopter)	Ft Greely, Delta Junction, AK	(907)353-9170 (907)356-5551	X	X	
Guardian Flight (Fixed wing)	Fairbanks	(907)356-5551		X	

7. HOSPITALS								
NAME	ADDRESS	TRAVEL TIME		PHONE	HELIPAD		BURN CTR	
		AIR	GRND		YES	NO	YES	NO
Fairbanks Memorial 64*49.90' x 147*44.50'	1650 Cowles Street, Fairbanks, AK 99701	30 min	90 min	(907)458-5556 (907)353-9170	X			X
Anchorage-Providence Hosp 61*11.62' x 149*49.42'	3200 Providence Dr Anchorage, AK 99504	2 hrs	6 hrs	(907)212-3111	X			X
Harborview Burn Center 47* 36.190 x 122*19.500	325 9th Ave Seattle, WA 98104	4hrs		(206) 284-2876	X		X	

8. MEDICAL EMERGENCY PROCEDURES

LINE MEDICAL EMERGENCY:

- Crew Supervisor contact Division Supervisor/Operations with patient complaint/condition and location. Division Supervisor/Operations contacts communications on COMMAND:
- Division Supervisor/Operations to use "injury or incident communication protocol" on next page
- Identify On-scene Point of Contact (POC) by resource and last name
- Identify on-scene medical personnel by position and name
- Communications contacts MEDL via radio or cell phone and clears command channel for emergency traffic
- Communications notifies: Safety, Operations and Air ops
- Medical Unit Leader will:
 1. Have communications dispatch ground/air transport resources
 2. Develop primary and contingency transport plan

SPIKE CAMP MEDICAL EMERGENCY DAY:

- Notify Communications of camp emergency
Communications contacts Medical Unit with patient complaint/condition and location.
- Medical Unit Leader will:
 1. Have communications dispatch ground/air transport resources
 2. Develop primary and contingency transport plan
 - Communications Unit contacts: Safety and Operations

SPIKE CAMP MEDICAL EMERGENCY NIGHT:

- Notify Facilities and/or Medical manager at spike camp.
Facilities and/or Medical manager will contact Communications.
- Communications contacts MEDL by Cell phone
 - Medical Unit Leader contacts:
 - * Safety and Operations
 - Medical Unit Leader will:
 1. Dispatch ground/air transport resources
 2. Develop primary and contingency transport plan

206 ICS	9. PREPARED BY: (Medical Unit Leader)	10. REVIEWED BY: (Safety Officer)
	Terry Solomon, MEDL	Tom Greiling, SOF2

Injury or Incident Communications Protocol

DECLARE: Medical Emergency or Medical transport

Best transport method: Ambulance Helicopter Vehicle

Location _____

Situation _____

Any special equipment required _____

Number of injured _____ Type of injuries _____

Closest pick up point (DP, Helispot) _____

Level of Consciousness _____ Resp. _____ Pulse _____ BP _____

Injury _____

Medical History/Allergies _____

Air Transportation Triage

	Ground or Air Ambulance to Hosp.	Transport to Med Unit
Mechanism	Hit by a falling tree or large branch Fall of 10' or more Insect bite with shortness of breath Signs of heat stroke (hot, dry, disoriented) Burn Injury greater than 1% body area	Minor dehydration Cut or laceration with bleeding controlled Minor bites and Stings Minor burns
Area Injured	Significant Blunt or Penetrating Trauma to Head, Neck, Chest, Abdomen or pelvis Any Arm or Leg fracture above the Joint	Minor blunt trauma Minor penetrating trauma Extremity sprains and strains Simple fracture below elbow or knee
Symptoms	Disoriented Chest Pain <u>or</u> Shortness of Breath Weak or absent radial pulse Pale, cold and sweating	Alert and oriented No shortness of breath Good pulses

Medevac Sites

H-1	64 46.275 N	146 53.233 W	H-5	64 38.415 N	146 40.352 W
H-2	64 40.768 N	146 48.229 W	H-6	64 42.647 N	146 54.695 W
H-3	64 52.552 N	146 46.660 W	H-7	64 42.180 N	146 52.736 W
H-4	64 47.591 N	146 55.300 W	H-8	64 50.831 N	146 50.074 W

If air or ground ambulance is DELAYED:

Package and transport patient to rendezvous with Ambulance. Re-route EMS helicopter to rendezvous point as appropriate.