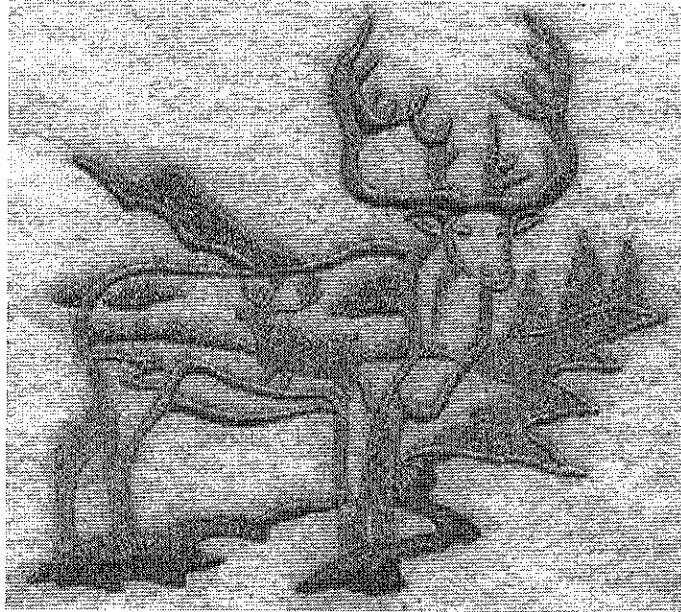


# STUART CREEK 2 FIRE AK-MID-000280



July 23<sup>rd</sup>, 2013  
Day 0800 - 2200

## Meeting Schedule

08:00 Briefing @ Lion Spike  
Simulcast over the radio  
18:00 Planning Meeting @ North Pole

### NEW QR Code

If you have a smartphone or tablet, download the PDF Maps App by Avenza to start accessing map products from your smart device. Scan the QR code (using RL Classic), then download and open the map in PDF Maps on your device.

\*Be sure to enable the location settings on your device or you won't be able to see yourself on the map surface.





<b>Incident Objectives</b>	1. Incident Name MID Stuart Creek 2	2. Date Prepared 07/22/13	3. Time Prepared 1049
4. Operational Period 07/23/13 Tuesday DAY Shift 0800 - 2200			
<b>Control Objectives:</b>			
Keep Fire: - East of a line along the Transmitter Road, north to the Chena River and south along the Trans-Alaska Pipeline to the Salcha River. - South of the Chena River. - North of the Salcha River. - West of the South Fork Chena River, south along eastern boundary of the Training Area, south to the Salcha River.			
<b>Management Objectives:</b>			
- Provide for firefighter and public safety utilizing risk management practices. - Protect military infrastructure, private residences, cabins, improvements and jurisdictional lands within and adjacent to the fire area. - Support local unit initial attack as requested. - Minimize or mitigate threats to known cultural resources by utilizing Resource Advisors and/or Archeologists. - Coordinate and communicate fire information with the public and all stakeholders. - Coordinate, develop and implement fire suppression repair. - Minimize threats and impacts to riparian areas, critical watershed and other high value natural resources.			
6. Weather Forecast for Period			
Tuesday: Weather: Partly cloudy High Temperature..... 64-72 (down 0-2 degrees from Monday) Min RH.....49-58% (up 5-9% from Monday) 20-FOOT WINDS: Valley Bottom/Mid-Slope... South-southwest 4-8 mph ridgetop.....West-Southwest 7-12 mph, gusting 15-20 mph CWR (>=0.10")....0% LAL.....1 (no lightning)			
7. General Safety Message			
Bears are beginning to make their presence known...Keep it Clean!			
8. Attachments (mark if attached)			
<input checked="" type="checkbox"/> Organization List - ICS 203	<input checked="" type="checkbox"/> Incident Map	<input type="checkbox"/>	
<input checked="" type="checkbox"/> Div. Assignment Lists - ICS 204	<input checked="" type="checkbox"/> Safety Message	<input type="checkbox"/>	
<input checked="" type="checkbox"/> Communications Plan - ICS205	<input type="checkbox"/> Traffic Plan	<input type="checkbox"/>	
<input checked="" type="checkbox"/> Medical Plan - ICS 206	<input checked="" type="checkbox"/> Human Resource	<input type="checkbox"/>	
<input checked="" type="checkbox"/> Air Operations Summary - ICS 220	<input checked="" type="checkbox"/> Transportation Map	<input type="checkbox"/>	
9. Prepared by (Planning Section Chief) Marsha Henderson <i>Marsha Henderson</i>		10. Approved by (Incident Commander) Tom Kurth <i>Tom Kurth</i>	

**ICS Form 203  
ORGANIZATION ASSIGNMENT LIST**

<b>1. INCIDENT NAME</b> Stuart Creek 2	<b>2. DATE PREPARED</b> 7-22-13	<b>3. TIME PREPARED</b> 1800
---	------------------------------------	---------------------------------

**5. INCIDENT COMMAND STAFF**

**AK Green Team**

Position	Name
INCIDENT COMMANDER	Tom Kurth
DEPUTY	
SAFETY OFFICER	Tom Greiling/ Paul Van Hees
INFORMATION OFFICER	Gary Lenhausen / Maureen Clark (t)
LIAISON OFFICER	
HUMAN RESOURCE SPECIALIST	Cliff Ligons

**4. OPERATIONAL PERIOD (DATE/TIME)**  
7-23-13 0800-2200

**6. AGENCY REPRESENTATIVES**

AGENCY	NAME
US Army	Col. Johnson
US Air Force	Maj. Majken Tutty
Alaska State Parks	Ian Thomas
Alaska Fire Service	Jake Dollard
Fairbanks N.Star Borough	Dave Gibbs
Alaska DNR	Gordon Amundson
Alaska State Troopers	Capt. Barrick

**9. OPERATIONS SECTION**

CHIEF	H. Smith / E. Sanford / B. Petersen (t)	
PLANNING OPS		
DEPUTY OPS		
<b>a. BRANCH</b>		
DIVISION	B/C/F	James Sullivan
DIVISION	K/L	Unstaffed
DIVISION	M/N	Karen Scholl / Lakota Burwell (t)
DIVISION	P	Matt Robinett
DIVISION	R	Matt Corley / Jeff Cramer (t)
DIVISION	S	Tamar Young /Randy Foland (t)
DIVISION	A	David Bloemaker / Phil OoSahwe (t)
DIVISION	REHAB	Cameron Winfrey

**7. PLANNING SECTION**

CHIEF	Marsha Henderson
CHIEF	
RESOURCES UNIT	Al Yanagisawa / Mike Butteri (t) / Jeff Ennenga (t)
SITUATION UNIT	Adam Kohley / Joe Johndreau(t)
STRATEGIC OPS PLANNER	
DEMOBILIZATION UNIT	Alan Martin
CTSP	Bill Beach
TNSP	
FBAN / LTAN	Robert Ziel / Tom St. Clair(t)
IMET	Andy Haner
GISS	Lasheena Nieves/ Brian Sorbel
READ	Josh Buzby / Dan Rees
Range Control	(Day) Beck / (Night) Stepp

**b. BRANCH**

BRANCH DIRECTOR

FIREBIRD STG GROUP	STAGING	Mike Kinne
DIVISION		
DIVISION		
DIVISION		
DIVISION		
DIVISION		

**8. LOGISTICS SECTION**

CHIEF	Janet Ladd / Jerri Webster
CHIEF	
<b>a. SUPPORT BRANCH</b>	
SUPPLY UNIT	Karl Meitzner
FACILITIES UNIT	Rich Bidasolo/ Bryan Seibold
GROUND SUPPORT UNIT	Rusty Hippchen / Will Hutto (t)

**c. BRANCH -**

**d. AIR OPERATIONS BRANCH**

AIR OPERATIONS BR. DIR.	Gary Mullen
AIR TACTICAL GROUP SUP.	Dennis Carlson
AIR SUPPORT GROUP SUP	Ty Miller
HELICOPTER COORDINATOR	

**b. SERVICE BRANCH**

COMMUNICATIONS UNIT	Jordan Halden
COMMUNICATIONS MANG	
FOOD UNIT	Ed Haen / Mel Magnusm-Strick (t)
RECEIVING	Amber Rosser
ORDERING	Jenn Northway
MEDICAL UNIT	Terry Solomon / Chuck Passek

**10. FINANCE/ADMINISTRATION SECTION**

CHIEF	Jaci Toth
CHIEF	
TIME UNIT	Maggie Prochazka
PERSONAL TIME	S. Argend/ F. Chase/ M. Glover
COMPENSATION/CLAIMS UNIT	Tracy Nicholson
COST UNIT	Darla Pindell
EQUIPMENT TIME	Crystal Sisto Druck


**PREPARED BY (RESOURCES UNIT)**  
Al Yanagisawa / Jeff Ennenga (t)



# INCIDENT Weather Forecast



**FORECAST NO:** 18  
**PREDICTION FOR:** Tuesday Shift  
**SHIFT DATE:** July 23, 2013

**NAME OF FIRE:** Stuart Creek # 2 Fire  
**UNIT:** MID  
**SIGNED:** Andy Haner 

**TIME AND DATE**  
**FORECAST ISSUED:** 07/22/2013 at 2000 ADT

**Incident Meteorologist**

**WEATHER DISCUSSION:** An upper level ridge will maintain a warm air mass over the fire area today, and a modest increase in atmospheric moisture will lead to somewhat higher humidity. Mid- and high-level clouds will become thick at times, providing filtered, milky-looking sunshine. A cold front will slip south to the Brooks Range this evening but will not cross the fire area. Even so, it will be close enough to increase west-southwest winds today.

**WEATHER FORECAST:**

**Tuesday:**

**Weather:** Partly cloudy  
**High Temperature.....** 64-72 (down 0-2 degrees from Monday)  
**Min RH.....** 49-58% (up 5-9% from Monday)  
**20-FOOT WINDS:**  
**Valley Bottom/Mid-Slope...** South-southwest 4-8 mph  
**Ridgetop.....** West-Southwest 7-12 mph, gusting 15-20 mph  
**CWR (>=0.10").....** 0%  
**LAL.....** 1 (no lightning)

**Tuesday Night:**

**Weather:** Partly cloudy  
**Low Temperature.....** 48-54.  
**Max RH.....** 75-90%  
**20-FOOT WINDS:**  
**Valley Bottom.....** South-Southwest 3-6 mph  
**Ridgetop.....** West-Southwest 7-12 mph, gusting to 20 mph  
**CWR (>=0.10").....** 0%  
**LAL.....** 1 (no lightning)

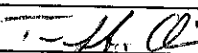
**Outlook for Wednesday:**

**Weather:** Mostly cloudy. A shower or sprinkle is possible in the afternoon and evening. Rainfall total around 0.05"-0.10" by the end of shift  
**High Temperature.....** 64-72 (little change from Tuesday)  
**Min RH.....** 50-59% (up 1-3% from Tuesday)  
**20-FOOT WINDS:**  
**Valley Bottom/Mid-Slope...** South-southwest 3-6 mph  
**Ridgetop.....** West-Southwest 6-10 mph, gusting 15 mph  
**CWR (>=0.10").....** 20%  
**LAL.....** 1 (no lightning)

**EXTENDED OUTLOOK:** **Thursday and Friday...** A strong upper level ridge will expand from Bristol Bay into the interior from Thursday afternoon through Friday evening. This will end the chance of showers on Thursday morning, then cause clearing skies and progressively warmer afternoons.

**.Thursday...** Cloudy in the morning with the chance of a lingering shower (0.10" of rain or less), then increasing sunshine in the afternoon and evening. Lows 50-55. Highs 66-74. Min RH 46-54%. Ridgetop winds west-southwest 5-8 mph, gusting to 15 mph  
**.Friday...** Mostly sunny. Lows 46-52. Highs 70-78. Min RH 36-42%. Ridgetop winds west-southwest 5-8 mph, gusting 15-20 mph

## FIRE BEHAVIOR FORECAST

<b>FORECAST NUMBER:</b> # 21	<b>TYPE OF FIRE:</b> Wildfire
<b>FIRE NAME:</b> Stuart Creek #2	<b>OPERATIONAL PERIOD:</b> Day – July 23, 2013
<b>DATE ISSUED:</b> 07/22/13	<b>TIME ISSUED:</b> 2000 hrs
<b>UNIT:</b> BLM-AFS	<b>SIGNED:</b>  Tom St. Clair FBAN(T)

### WEATHER SUMMARY:

Partly Cloudy. High Temperature: 65-73 degrees. Minimum RH: 48-58%. Winds (Eye Level): VALLEY BOTTOM/MID South-Southwest 2-6 mph RIDGETOPS West-Southwest 5-8 mph, gusting 12-15 mph

**See attached Fire Weather Forecast for more details.**

Take weather observations, and call in to Communications. Please include location and elevation.

### FIRE BEHAVIOR

#### GENERAL:

Continued warming and drying trend. Isolated torching and potential for small runs in the spruce will increase when RH gets below 40%.

Stuart Creek RAWS Predicted Fire Weather Indices: FFMC 83, DMC 16, DC 254, ISI 4, BUI 27, FWI 7.4

**Majority of the fuels around the fire and within Spruce/Hardwood mix worst case scenario:**

FL Head: Up to 3'  
ROS Head: 10 ch/hr

**Continuous Black Spruce worst case scenario:**

FL Head: Up to 6'  
ROS Head: 13 ch/hr

**Spotting distance:** .5 miles

**Probability of ignition:** 40%

#### SPECIFIC:

**Divisions B, C, F, K, L, M, N, and P:** Scattered interior smoldering will continue. As fuels continue to dry out occasional torching will increase in spruce patches. Group torching is likely when RH gets into the 30s. Divisions M and P still have the highest potential for any previously undetected heat within the mop-up area to show itself whenever direct sunlight warms fuels.

**Division R:** Smoldering, persistent heat sources will continue to surface under the influence of direct sunlight.

**Divisions S, and A:** Smoldering and creeping with occasional group torching likely. The possibility of small organized flame fronts and small uphill runs in continuous spruce stands in unsecured areas remains. A remote possibility of an undetected spot fire from earlier in the week remains.

#### AIR OPERATIONS:

Be careful of trees falling due to weakened root systems near bucket drops.

#### SAFETY

Surface fire spread is dependent on fine fuels drying out and fine fuels are very responsive to changes in weather. Keep informed on weather conditions and forecasts. Pay attention to fireline weather observations as they are the most detailed and up to date information available.







<b>Division Assignment List</b>	1. Branch	2. Division/Group
---------------------------------	-----------	-------------------

**M/N**

3. Incident Name MID Stuart Creek 2	4. Operational Period 07/23/13 Tuesday DAY Shift 0800 - 2200
--	---

5. Operations Personnel

Operations Chief	HANS SMITH/ ED SANFORD	Division/Group	KAREN SCHOLL/ LAKOTA BURWELL (t)
Operations Chief	BRANDEN PETERSEN (t)	Air Attack Supervisor	DENNIS CARLSON
Branch Director		Safety Officer	TOM GREILING / PAUL VAN HEES

6. Resources Assigned this Period

Strike Team/Task Force/ Resource Designator	Leader	Num of Pers.	Trans. Y/N	Drop Off PT./Time	Pick Up PT./Time
C-56 CREW T2 NONDALTON #1 7/30	CHUCK TREFON	16	N	N SPIKE 0800	N SPIKE 2200
C-57 CREW T2 ALLAKAKET #2 7/30	R. MOSES, H. MOSES (t)	16	N	DP 10 0800	DP 10 2200
TFLD	EVAN ADSIT 7/26	1	N	MN SPIKE 0800	MN SPIKE 2200
TFLD (t)	SETH REEDY 7/25	1	N	MN SPIKE 0800	MN SPIKE 2200
EMT (IMS-M)	MILLIE CARSON 7/27	1	N	MN SPIKE 0800	MN SPIKE 2200
EMT (IMS-T)	PATRICK TOLAND 7/27	1	N	MN SPIKE 0800	MN SPIKE 2200
SOFR	ANDY MURRIN 7/31	1	N	MN SPIKE 0800	MN SPIKE 2200
E-40 - ATV				MN SPIKE 0800	MN SPIKE 2200
E-42 - ATV				MN SPIKE 0800	MN SPIKE 2200
E-168 - ATV				MN SPIKE 0800	MN SPIKE 2200
E-194 - ATV				MN SPIKE 0800	MN SPIKE 2200

7. Control Operations  
 Seek and extinguish hotspots from Station 3 to Station 19.  
 Backhaul all excess equipment and supplies.

8. Special Instructions  
 \* UXO-If you didn't drop it, don't pick it up!  
 \* Send all Shift Tickets and CTRs into Finance.  
 \* Identify all ATVs and report to Ground Support.  
 \* Report all bear sighting to Safety Officer.

9. Division/Group Communications Summary

Function	Frequency - RX	Frequency - TX	Tone	System	Channel	System	Channel
Command	170.0125N	165.2500N	123.0	NIFC	3		
Tactical	168.0500N	168.0500N		NIFC	4		
Logistics							
Air to Ground	169.1500N	169.1500N		NIFC	12		

Prepared by (Resource Unit Leader) Al Yanagisawa/ Jeff Ennenga (t)	Approved by (Planning Section Chief) Marsha Henderson <i>[Signature]</i>	Date Prepared 07/22/13	Time Prepared 1048
---	---	---------------------------	-----------------------

<b>Division Assignment List</b>	1. Branch	2. Division/Group
		<b>P</b>

3. Incident Name MID Stuart Creek 2	4. Operational Period 07/23/13 Tuesday DAY Shift 0800 - 2200
--	---

**5. Operations Personnel**

Operations Chief	HANS SMITH / ED SANFORD	Division/Group	MATT ROBINETT
Operations Chief	BRANDEN PETERSEN (T)	Air Attack Supervisor	DENNIS CARLSON
Branch Director		Safety Officer	TOM GREILING / PAUL VAN HEES

**6. Resources Assigned This Period**

Strike Team/Task Force/ Resource Designator	Leader	Num of Pers.	Trans. Y/N	Drop Off PT./Time	Pick Up PT./Time
C-58 CREW T2 CHEVAK#1 7/30	XAVIER NORATAK	15	N	DELAWARE SPK 0800	DELAWARE SPK 2200
STCR (t)	ANDREAS OROZCO 7/31	1	N	DELAWARE SPK 0800	DELAWARE SPK 2200
EMTF	PHIL GROSSARTH 7/25	1	N	DELAWARE SPK 0800	DELAWARE SPK 2200

**Control Operations :**  
 Backhaul all excess equipment and supplies; coordinate with Helibase.  
 Mop up Hotspots at Div. P/R Break.

**Special Instructions**  
 \* Send all Shift Tickets and CTRs into Finance.  
 \* Coordinate with Rehab Group.  
 \* Report all bear sighting to Safety Officer.

**9. Division/Group Communications Summary**

Function	Frequency - RX	Frequency - TX	Tone	System	Channel	System	Channel
Command	168.1000N	170.4500N	123.0	NIFC	1		
Tactical	168.2500N	168.2500N		NIFC	7		
Logistics							
Air to Ground	169.1500N	169.1500N		NIFC	12		

Prepared by (Resource Unit Leader) Al Yanagisawa / Jeff Ennenga (t)	Approved by (Planning Section Chief) Marsha Henderson <i>Man AK</i>	Date Prepared 07/22/13	Time Prepared 1048
--	--	---------------------------	-----------------------

# Division Assignment List

1. Branch

2. Division/Group

**R**

3. Incident Name

MID Stuart Creek 2

4. Operational Period

07/23/13 Tuesday DAY Shift 0800 - 2200

### Operations Personnel

Operations Chief	HANS SMITH/ ED SANFORD	Division/Group	MATT CORLEY/ JEFF CRAMER (t)
Operations Chief	BRANDEN PETERSEN (t)	Air Attack Supervisor	DENNIS CARLSON
Branch Director		Safety Officer	TOM GREILING / PAUL VAN HEES

### Resources Assigned this Period

Strike Team/Task Force/ Resource Designator	Leader	Num of Pers.	Trans. Y/N	Drop Off PT./Time	Pick Up PT./Time
C-55 CREW T2 BUCKLAND 7/30	THEODORE JOHN	16	N	ROMEO SPK 0800	ROMEO SPK 2200
STCR	STEVE THEISEN 8/2	1	N	ROMEO SPK 0800	ROMEO SPK 2200
STCR(t)	JEFF KERR 8/3	1	N	ROMEO SPK 0800	ROMEO SPK 2200
C-62 CREW - T2 - SHAGELUK 8/2	KEITH WORKMAN	16	N	WHISKEY SPK 0800	WHISKEY SPK 2200
C-64 CREW - T2 - HUSLIA #2 8/2	WILLIAM PENN	16	N	WHISKEY SPK 0800	WHISKEY SPK 2200
STCR	CHRIS FRIAR 8/1	1	N	WHISKEY SPK 0800	WHISKEY SPK 2200
STCR (t)	CONNIE STICKEL 8/2	1	N	WHISKEY SPK 0800	WHISKEY SPK 2200
E-38 SMJ BOAT		1	N	LION SPK 0800	LION SPK 2200
E-269 ZODIAK 6		1	N	LION SPK 0800	LION SPK 2200
E-270 ZODIAK 7		1	N	LION SPK 0800	LION SPK 2200
TFLD	MIKE O'BRIEN 7/28	1	N	ROMEO SPK 0800	ROMEO SPK 2200
TFLD (t)	BRIAN KIRKMAN 7/26	1	N	ROMEO SPK 0800	ROMEO SPK 2200
FFT2	EDEN FRIEDRICH 8/2	1	N	ROMEO SPK 0800	ROMEO SPK 2200
FALC	MATT BAKER 8/4	1	N	ROMEO SPK 0800	ROMEO SPK 2200
EMTF	ISABEL IBABAO 7/29	1	N	WHISKEY SPK 0800	WHISKEY SPK 2200
EMTF	ROBERT HELENA 7/29	1	N	ROMEO SPK 0800	ROMEO SPK 2200
SOFR	DARRELL CARR 7/31	1	N	WHISKEY SPK 0800	WHISKEY SPK 2200

7. Control Operations.

Mop up 100' in from H-14 to R/S break.

8. Special Instructions

- \* Send all shift tickets and CTRs into Finance.
- \* Ensure PFD's are worn for all boat operations.
- \* Report all bear sighting to Safety Officer

### 9. Division/Group Communications Summary

Function	Frequency - RX	Frequency - TX	Tone	System	Channel	System	Channel
Command	170.0125N	165.2500N	123.0	NIFC	3		
Tactical	168.2000N	168.2000N		NIFC	5		
Logistics							
Air to Ground	169.1500N	169.1500N		NIFC	12		

Prepared by (Resource Unit Leader)  
Al Yanagisawa/ Jeff Ennenga (t)

Approved by (Planning Section Chief)  
Marsha Henderson *Marsha Henderson*

Date Prepared  
07/22/13

Time Prepared  
1048

<b>Division Assignment List</b>	1. Branch	2. Division/Group <b>S</b>
---------------------------------	-----------	-------------------------------

3. Incident Name MID Stuart Creek 2	4. Operational Period 07/23/13 Tuesday DAY Shift 0800 - 2200
--	---

**5. Operations Personnel**

Operations Chief	HANS SMITH/ ED SANFORD	Division/Group	TAMAR YOUNG/ RANDY FOLAND (t)
Operations Chief	BRANDEN PETERSEN (t)	Air Attack Supervisor	DENNIS CARLSON
Branch Director		Safety Officer	TOM GREILING / PAUL VAN HEES

**6. Resources Assigned this Period**

Strike Team/Task Force/ Resource Designator	Leader	Num of Pers.	Trans. Y/N	Drop Off PT./Time	Pick Up PT./Time
C-66 CREW-T2-FORT YUKON #2 8/2	DON CARROLL SR.	16	N	H-12 0800	H-12 2200
C-67 CREW-T2IA-GANNETT GLACIER	BRAD KARELLA 8/1	20	N	H-12 0800	H-12 2200
E-352 AIRBOAT, DIAMONDBACK	SCOTT CUCHNA 8/1	1	N	H-12 0800	H-12 2200
STCR	DALE WOITAS 7/25	1	N	H-12 0800	H-12 2200
EMTI	PAUL BUCCIGROSS 7/30	1	N	H-12 0800	H-12 2200

**7. Control Operations**  
 Continue to secure fire edge from Sierra Spike north to hard black.  
 Hotspot line from H-12 to Div S/A break.  
  
 \*Gannett Glacier have 1 Helitack Load available for Initial Attack.

- 8. Special Instructions**
- \* Send Coordinates for any new Hotspots into Helibase.
  - \* Call in Weather Observations to Communications hourly.
  - \* Ensure PFD's are worn for all boat operations.
  - \* Send all CTRs and Shift Tickets into Finance.
  - \* Report all bear sighting to Safety Officer.

**9. Division/Group Communications Summary**

Function	Frequency - RX	Frequency - TX	Tone	System	Channel	System	Channel
Command	170.0125N	165.2500N	123.0	NIFC	3		
Tactical	166.7250N	166.7250N		NIFC	6		
Logistics							
Air-to-Ground	169.1500N	169.1500N		NIFC	12		

Prepared by (Resource Unit Leader) Al Yanagisawa/ Jeff Ennenga (t)	Approved by (Planning Section Chief) Marsha Henderson <i>[Signature]</i>	Date Prepared 07/22/13	Time Prepared 1048
---	---	---------------------------	-----------------------

<b>Division Assignment List</b>	1. Branch	2. Division/Group <b>A</b>
---------------------------------	-----------	-------------------------------

3. Incident Name MID Stuart Creek 2	4. Operational Period 07/23/13 Tuesday DAY Shift 0800 - 2200
--	---

5. Operations Personnel

Operations Chief	HANS SMITH / ED SANFORD	Division/Group	DAVID BLOEMAKER/ PHILLIP OOSAHWE (t)
Operations Chief	BRANDEN PETERSEN (t)	Air Attack Supervisor	GARY MULLEN
Branch Director		Safety Officer	TOM GREILING

6. Resources Assigned this Period

Strike Team/Task Force/ Resource Designator	Leader	Num of Pers.	Trans. Y/N	Drop Off PT./Time	Pick Up PT./Time
C-49 CREW T1 CHENA IHC 7/23	CHRIS MARABETTA	20	N	H11 0800	H11 2200
C-63 CREW T2 HOOPER BAY #2 8/2	HARVEY MANN	16	N	H11 0800	H11 2200
C-65 CREW T2 - HUGHES 8/2	CHARLES NED	16	N	H11 0800	H11 2200
C-68 CREW T2IA-WHITE MOUNTAIN 8/5	GILBERT FRANK	19	N	H11 0800	H11 2200
STCR	TRAVIS HOWELL 8/2	1	N	H11 0800	H11 2200
STCR	STEVE YOUNG 8/2	1	N	H11 0800	H11 2200
EMTF	EVAN STERLING 7/30	1	N	H11 0800	H11 2200
EMTP	SHANE POWERS 7/30	1	N	H11 0800	H11 2200
SOFR	RONALD McDOLE 7/29	1	N	H11 0800	H11 2200

7. Control Operations  
Mop up spot fires 100' in.  
Secure fire line north from H-11 to Div A/S break.

8. Special Instructions  
\* Monitor fire activity South of H-11 to Section 17.  
\* Send all CTRs and Shift Tickets into Finance.  
\* Report all bear sighting to Safety Officer.

9. Division/Group Communications Summary

Function	Frequency - RX	Frequency - TX	Tone	System	Channel	System	Channel
Command	170.0125N	165.2500N	123.0	NIFC	3		
Tactical	168.0500N	168.0500N		NIFC	4		
Logistics							
Air to Ground	169.1500N	169.1500N		NIFC	12		

Prepared by (Resource Unit Leader) A. Yanagisawa / Jeff Ennenga (t)	Approved by (Planning Section Chief) Marsha Henderson <i>[Signature]</i>	Date Prepared 07/22/13	Time Prepared 1049
--	---	---------------------------	-----------------------

<b>Division Assignment List</b>	1. Branch	2. Division/Group <b>Rehab Group Pa 1</b>
---------------------------------	-----------	--

3. Incident Name MID Stuart Creek 2	4. Operational Period 07/23/13 Tuesday DAY Shift 0800 - 2200
--	---

5. Operations Personnel

Operations Chief	HANS SMITH / ED SANFORD	Division/Group Supervisor	CAMERON WINFREY
Operations Chief	BRANDEN PETERSEN (t)	Air Attack Supervisor	DENNIS CARLSON
Branch Director		Safety Officer	TOM GREILING / PAUL VAN HEES

6. Resources Assigned this Period

Strike Team/Task Force/ Resource Designator	Leader	Num of Pers.	Trans. Y/N	Drop Off PT./Time	Pick Up PT./Time
E-309 EXCV -WV BUILDERS		1	N	FB STAGING / 0800	FB STAGING / 2200
E-322 EXCV -FBK CONST		1	N	FB STAGING / 0800	FB STAGING / 2200
E-330 EXCV -RT ENTERPRISES		1	N	FB STAGING / 0800	FB STAGING / 2200
E-331 EXCV -RT ENTERPRISES		1	N	FB STAGING / 0800	FB STAGING / 2200
E-332 EXCV -HECTOR'S WELDING		1	N	FB STAGING / 0800	FB STAGING / 2200
E-333 EXCV -B. TREFTHEN		1	N	FB STAGING / 0800	FB STAGING / 2200
E-355 EXCV -BENSON		1	N	FB STAGING / 0800	FB STAGING / 2200
E-356 EXCV -HUBBARDS		1	N	FB STAGING / 0800	FB STAGING / 2200
E-205 DOZER -REMOTE 1		1	N	FB STAGING / 0800	FB STAGING / 2200
E-207 DOZER-T2-BLACKGOLD		1	N	FB STAGING / 0800	FB STAGING / 2200
E-265 DOZER -D6C - HOWARD		2	N	FB STAGING / 0800	FB STAGING / 2200
E-294 DOZER -T2 - STONE BOY		2	N	FB STAGING / 0800	FB STAGING / 2200
E-359 DOZER -T2-HECTORS		1	N	FB STAGING / 0800	FB STAGING / 2200
E-360 DOZER -T2-HECTORS		1	N	FB STAGING / 0800	FB STAGING / 2200
E-62 SKIDGINE #1-FBKS CONST.		1	N	FB STAGING / 0800	FB STAGING / 2200
E-353 SKG1 FUEL TRAILER		0	N	FB STAGING / 0800	FB STAGING / 2200
E-297 SOFT-TRACK FUEL		1	N	FB STAGING / 0800	FB STAGING / 2200
E-108 LOWBOY-FBKS CONST.		1	N	FB STAGING / 0800	FB STAGING / 2200

**7. Control Operations**  
 Continue to rehab DIV L: Infantry Platoon Battle Course, Manchu Road/Beaver Creek Dozer and Hand Line, DMPTR Range Operations Center.  
 Coordinate with DIVS and Resource Advisors Dan Rees and Josh Buzby.

**8. Special Instructions**  
 \* Record and report all rehab completion to Situations Unit daily.  
 \* Ensure adequate spacing between people and heavy equipment.  
 \* Coordinate rehab with Div P, N, M and Range Control.  
 \* Send all CTRs and Shift Tickets into Finance.  
 \* Identify all ATVs and report to Ground Support.  
 \* Report all bear sighting to Safety Officer.

9. Division/Group Communications Summary

Function	Frequency - RX	Frequency - TX	Tone	System	Channel	System	Channel
Command	168.1000N	170.4500N	123.0	NIFC	1		
Tactical Div/Group	168.2000N	168.2000N		NIFC	5		
Logistics							
Air to Ground	169.1500N	169.1500N		NIFC	12		

Prepared by (Resource Unit Leader) Al Yanagisawa / Jeff Ennenga (t)	Approved by (Planning Section Chief) Marsha Henderson <i>Marsha Henderson</i>	Date Prepared 07/22/13	Time Prepared 1048
--	--	---------------------------	-----------------------

<b>Division Assignment List</b>	1. Branch	2. Division/Group <b>Rehab Group Pa 2</b>
---------------------------------	-----------	--

3. Incident Name MID Stuart Creek 2	4. Operational Period 07/23/13 Tuesday DAY Shift 0800 - 2200
--	---

5. Operations Personnel

Operations Chief	HANS SMITH / ED SANFORD	Division/Group Supervisor	CAMERON WINFREY
Operations Chief	BRANDEN PETERSEN (t)	Air Attack Supervisor	DENNIS CARLSON
Branch Director		Safety Officer	TOM GREILING / PAUL VAN HEES

6. Resources Assigned this Period

Strike Team/Task Force/ Resource Designator	Leader	7/30	Num of Pers.	Trans. Y/N	Drop Off PT./Time	Pick Up PT./Time
TFLD	JON GLOVER	7/30	1	N	FB STAGING / 0800	FB STAGING / 2200
TFLD (t)	MATT SNYDER	7/26	1	N	FB STAGING / 0800	FB STAGING / 2200
TFLD	DIRK GILES	7/28	1	N	FB STAGING / 0800	FB STAGING / 2200
HEQB	THEODORE MORRIS	7/31	1	N	FB STAGING / 0800	FB STAGING / 2200
HEQB (t)	SAMUEL THOMPSON	7/31	1	N	FB STAGING / 0800	FB STAGING / 2200
HEQB	JUSTIN RAY	8/1	1	N	FB STAGING / 0800	FB STAGING / 2200
HEQB	MATT DURFEY	8/1	1	N	FB STAGING / 0800	FB STAGING / 2200
HEQB	CHRIS YORK	7/26	1	N	FB STAGING / 0800	FB STAGING / 2200
HEQB (t)	KEVIN MEANY	7/31	1	N	FB STAGING / 0800	FB STAGING / 2200
HEQB	CHRISTIAN BLANKENSHIP		1	N	FB STAGING / 0800	FB STAGING / 2200
HEQB	KALEB MANIACI	8/12	1	N	FB STAGING / 0800	FB STAGING / 2200
HEQB	AVI SHALOM	8/12	1	N	FB STAGING / 0800	FB STAGING / 2200
HEQB	JOSH TURNBOW	8/12	1	N	FB STAGING / 0800	FB STAGING / 2200
SOFR	LARRY WELSH	7/31	1	N	FB STAGING / 0800	FB STAGING / 2200

7. Control Operations  
 Continue to rehab DIV L: Infantry Platoon Battle Course, Manchu Road/Beaver Creek Dozer and Hand Line, DMPTR Range Operations Center.  
 Coordinate with DIVS and Resource Advisors Dan Rees and Josh Buzby.

8. Special Instructions  
 \* Record and report all rehab completion to Situations Unit daily.  
 \* Ensure adequate spacing between people and heavy equipment.  
 \* Coordinate rehab with Div P, N, M and Range Control.  
 \* Send all CTRs and Shift Tickets into Finance.  
 \* Identify all ATV's and report to Ground Support  
 \* Report all bear sighting to Safety Officer.

9. Division/Group Communications Summary

Function	Frequency - RX	Frequency - TX	Tone	System	Channel	System	Channel
Command	168.1000N	170.4500N	123.0	NIFC	1		
Tactical Div/Group	168.2000N	168.2000N		NIFC	5		
Logistics							
Air to Ground	169.1500N	169.1500N		NIFC	12		

Prepared by (Resource Unit Leader) Al Yanagisawa / Jeff Ennenga (t)	Approved by (Planning Section Chief) Marsha Henderson	Date Prepared 07/22/13	Time Prepared 1048
--	--	---------------------------	-----------------------

<b>Division Assignment List</b>		1. Branch	2. Division/Group <b>Firebird Staging</b>
---------------------------------	--	-----------	--

3. Incident Name <b>MID Stuart Creek 2</b>	4. Operational Period <b>07/23/13 Tuesday DAY Shift 0800 - 2200</b>
---	--

**5. Operations Personnel**

Operations Chief	<b>HANS SMITH / ED SANFORD</b>	Division/Group	
Operations Chief	<b>BRANDEN PETERSEN (t)</b>	Air Attack Supervisor	<b>GARY MULLEN</b>
Branch Director		Safety Officer	<b>TOM GREILING</b>

**6. Resources Assigned This Period**

Strike Team/Task Force/ Resource Designator	Leader	Num of Pers.	Trans. Y/N	Drop Off PT./Time	Pick Up PT./Time
STAM	<b>MIKE KINNE 7/31</b>	1	N	FB STAGING 0800	FB STAGING 2200
E-109 LOWBOY -SOFT TRACK ATTACK		1	N	FB STAGING 0800	FB STAGING 2200
E-239 LOWBOY -HUBBARD		1	N	FB STAGING 0800	FB STAGING 2200
E-203 FT. WAINWRIGHT AMBULANCE		2	N	FB STAGING 0800	FB STAGING 2200
EMTF	<b>DAVID POXLEITNER 7/24</b>	1	N	FB STAGING 0800	FB STAGING 2200
EMTF	<b>DOUGLAS GREGG 7/24</b>	1	N	FB STAGING 0800	FB STAGING 2200

7. Control Operations

8. Special Instructions  
 \* Ft. Wainwright ambulance E-203 will be assigned to DIV C, F, and K during the day and will overnight @ Firebird Staging.  
 \* EMTFs GREGG and POXLEITNER will be assigned to DIV C, F, and K during the day and will overnight @ Firebird Staging.  
 \* Prepare to move Staging Area.  
 \* Report all bear sightings to Safety Officer.

**9. Division/Group Communications Summary**

Function	Frequency - RX	Frequency - TX	Tone	System	Channel	System	Channel
Command	168.1000N	170.4500N	123.0	NIFC	1		
Tactical							
Logistics							
Air to Ground	169.1500N	169.1500N		NIFC	12		

Prepared by (Resource Unit Leader) <b>AL Yanagisawa / Jeff Ennenga (t)</b>	Approved by (Planning Section Chief) <b>Marsha Henderson</b>	Date Prepared <b>07/22/13</b>	Time Prepared <b>1048</b>
---	---	----------------------------------	------------------------------



AIR OPERATIONS SUMMARY		PREPARED BY: Ty Miller for Gary Mullen, AOB		DATE/TIME PREPARED: 7/22/2013 1830 hrs.									
1. INCIDENT NAME: Stuart Creek # 2		7/23/2013		START TIME: 1000									
2. OPERATIONAL PERIOD DATE:		7/23/2013		END TIME: 2400									
3. REMARKS (Safety Notes, Hazards, Air Operations, Special Equipment, etc.): 150' Tower erected at Bravo 2 FIXED WING BE AWARE OF HELIBASE LOCATION 12 HOUR DUTY DAY RESTRICTIONS FOR TANKERS STARTING LADD tower control is operational at this time-use caution with in/out traffic Assume roads have wires Range Control Freq 125.300, Military Aircraft only in the Impact Zone, Use caution when smoke is heavy and visibility is limited, <i>Medivac Hospital freq 155.160</i>		4. Medivac Available on request		5. TFR: (A-35) TFR 3/8848 in place. Polygon shape. At and below 5000 feet MSL.									
6. PERSONNEL	Phone	7. FREQUENCIES	AM	FM	8. FIXED-WING #Available/Type/Make-Model/FAA N#/ & Bases: LADD								
AOBD: Gary Mullen	(907) 960-1141	AIR/AIR FW: BRIEFING	124.2500 (A-1) 132.0250 (A-31)		Air Tankers: T-152, T-155								
ASGS: Ty Miller	(907) 460-7530	AIR/AIR RW:	123.1500 (A-7)	UYT Blue: 166.875 DECK: 163.100 (A-30)	Scoopers: 264,267,885								
HLCO:		AIR/GROUND:		Primary 169.1500 (A-6) Secondary 166.6750 (A-5)	Available at LADD, order direct through UYT Dispatch.								
ATGS: Dennis Carlson AFS Helibase: Tom Schmidt	(360) 742-9136 (907) 356-5659	COMMAND 1. RX COMMAND 3. RX	168.1000 TX 170.0125 TX	170.4500 RX/TX 165.2500 RX/TX	Lead planes & ASMs: Available at LADD, order direct through UYT Dispatch								
HEB1: Jesse Best	(406) 212-4822	Grange Hall	64 51.77 by 146 58.67										
Deck:		DECK FREQ::	163.100 (A-30)										
UYT	(907) 356-5553	TOLC FREQ::			ATGS Aircraft: Commander 1010F (A-10)								
9. HELICOPTERS (Use Additional Sheets As Necessary)													
FAA N#	T Y	MAKE	BASE	AVAIL	START	REMARKS	FAA N#	T Y	MAKE/MODEL	BASE	AVAIL	START	REMARKS
508EH	2	Bell 212, Mgr. Karl Ladd 907-378-6050	Grange Hall	1000	1030	Exclusive Use							
361EH	2	Bell 212, Mgr. Bob Merrow 907-750-1455	Grange Hall	1000	1030	Exclusive Use							
399EH A-36	2	Bell 212, Mgr. Brian Deck 208-841-6995	Grange Hall	0900	0930	Stuart Fire							
516LE	3	Bell 206L3, Mgr. Jamie Gilbert 907-823-4014	Grange Hall	1000	1030	Exclusive Use							
911CV A-8	3	B-3 A-Star, Mgr. Mathew Kilgriff 907-388-3087	Grange Hall	0900	0930	Exclusive use							

**Incident Radio Communications Plan**

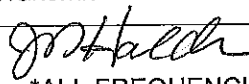
1. Incident Name  
MID Stuart Creek 2

2. Operational Period  
07/23/13 Tuesday DAY Shift 0800 - 2200

**3. Basic Radio Channel Utilization**

Radio Type	Channel	Function	Frequency/Tone		Assignment	Remarks
NIFC	1	CMD 1	RX 168.1000N	TX 170.4500N	COMMAND	POLE HILL Linked with All CMDs
			Transmit 123.0			
NIFC	3	CMD 3	RX 170.0125N	TX 165.2500N	COMMAND	Center of Fire Linked with All CMDs
			Transmit 123.0			
NIFC	4	TAC 1	RX 168.0500N	TX 168.0500N	Div A Div M/N	
NIFC	5	TAC 2	RX 168.2000N	TX 168.2000N	Div R Rehab Group	
NIFC	6	TAC 3	RX 166.7250N	TX 166.7250N	Div K/L Div S	
NIFC	7	TAC 4	RX 168.2500N	TX 168.2500N	Div B/C/F Div P	
NIFC	8	CMD 4	RX 170.3625N	TX 163.3875	COMMAND	Linked with All CMDs
			Transmit 123.0			
NIFC	9	CMD 9	RX 170.6875	TX 166.575	COMMAND	Linked with All CMDs
			Transmit 123.0			
Alaska	10	IA Tac 2	RX 166.7750N	TX 166.7750N	**Reserved for Initial Attack**	Alaska Interagency Initial Attack Tac 2
Alaska	11	IA Tac 1	RX 159.3750N	TX 159.3750N	**Reserved for Initial Attack**	Alaska Interagency Initial Attack Tac 1
NIFC	12	A/G 1	RX 169.1500N	TX 169.1500N	Air to Ground Tactical and Logistical	
NIFC	13	A/G 2	RX 166.6750N	TX 166.6750N	Air to Ground Rotor	
			Transmit 110.9			
NIFC	14	Air Guard	RX 168.625	TX 168.625	All Divisions Emerg Traffic	Emerg Contact with Aviation Resources
			Transmit Tone 110.9			
NIFC	16	Air Guard	RX 168.6250N	TX 168.6250N	All Divisions Emerg Traffic	Emerg Contact with Aviation Resources
			Transmit Tone 110.9			

4. Prepared by (Communications Unit)  
Jordan Halden, COML 907.347.7789



\*ALL FREQUENCIES ARE NARROWBAND\*

5. Date Prepared  
07/22/13

6. Time Prepared  
1048

## SAFETY MESSAGE

If you identify low hanging power lines like the one in Division M on Beaver Creek road near DP 12, please make sure the information is passed on to Safety and Divisions so everyone will know about it.

We would like to thank everyone on the fire for helping to maintain a high level of awareness in what are often hazardous conditions. Please continue what you are doing.



## Human Resource Message

### Understanding Cultural Diversity

We are fortunate to have a very diverse workforce working with us on the Stuart Creek 2 Fire. Effective communication between us requires an understanding and respect of these cultural differences and permits us to build positive, productive work relationships. One communication method to consider applying is the Platinum Rule. It's a positive approach to understanding cross-cultural differences. Try it!!

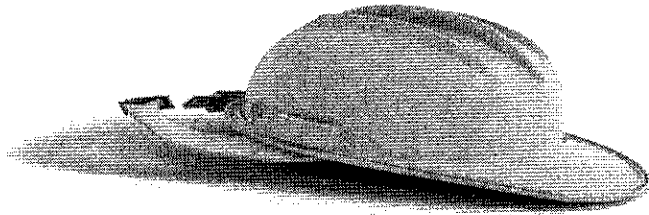
#### **PLATNUM RULE**

Do Unto Others As They Would Have Done Unto Themselves.

HRSP - Cliff Ligon, Located in North Pole Elementary School Room 110. My contact number is 360-607-9982.

Have a safe shift.

# Finance LCES



## Equipment/Contractors

## Personnel/Overhead

L = Let's

L = Legible

C = Complete

C = CTRs

E = Every

E = Equal

S = Shift Ticket

S = Salary

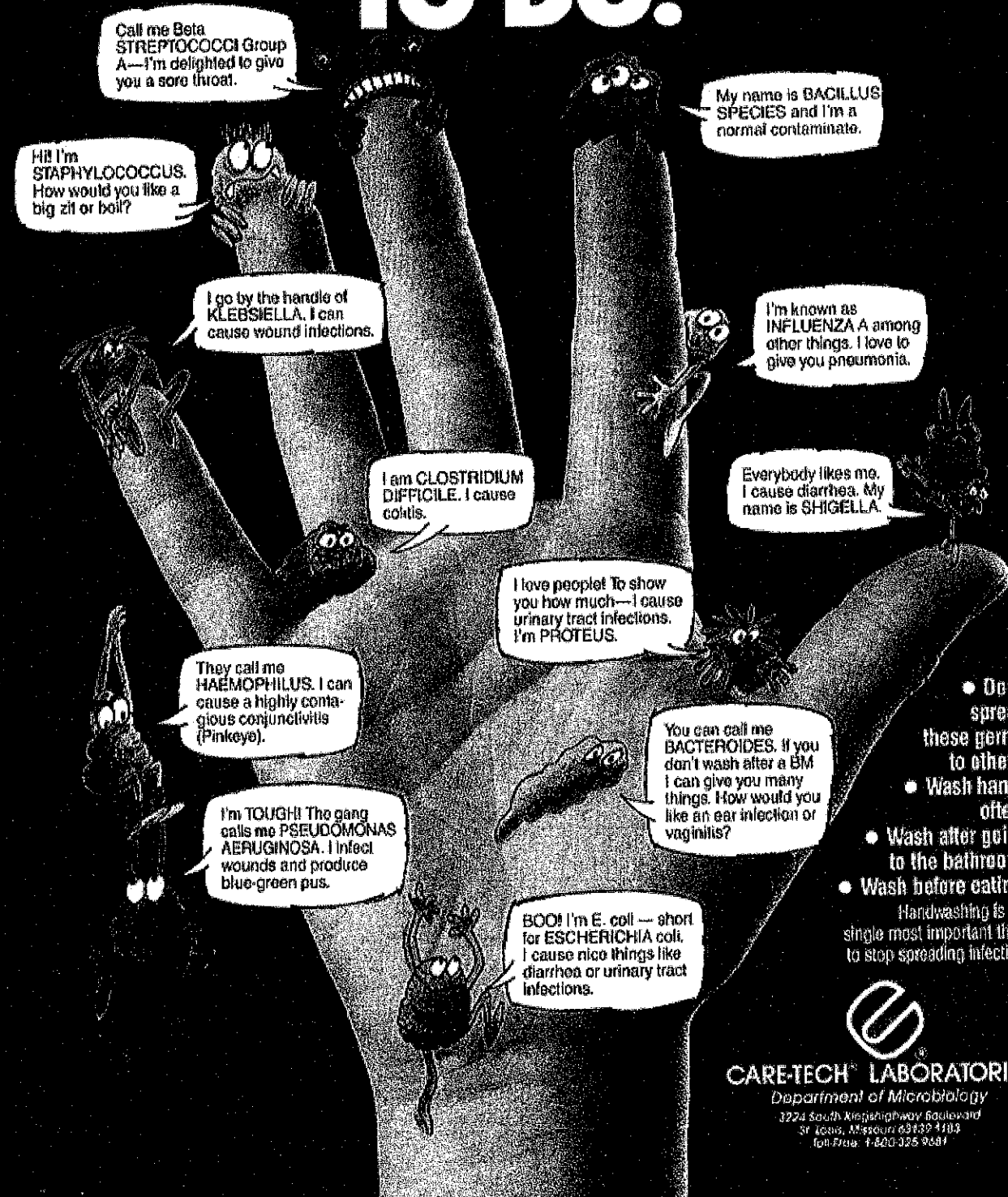
NOTE: Put those dates, E#/O#, hours, breaks, justifications on each of your documents.

ATTN: Nondalton (C-56) Crewboss needs to call us in Finance (451-0590 ext. 30254)

## Stuart Creek 2 Demob Schedule IAP

Date	Time	Req#	ResourceName	Home Unit	Job	DemobCity	St	Jetpo	Trave
07/23/201	08:00:	O-172	KILGRIFF, MATT	AKGAD	HMGB	FAIRBANKS	AK	FAI	PAS
07/23/201	08:00:	O-52	OOSAHWE, PHILLIP	AKGAD	DIVS	FAIRBANKS	AK	FAI	PAS
07/23/201	10:00:	O-194	MOORE, CHRISTOPHER	AKAKD	STCR	FAIRBANKS	AK	FAI	AOV
07/23/201	20:00:	O-68	JOHNDREAU, JOSEPH	NENBF	SITL	WALL	SD	RAP	A/R
07/23/201	20:00:	O-55.62	YANAGISAWA, AL	CALAC	RESL	LONG BEACH	CA	LAX	AIR
07/24/201	06:00:	O-188	ST CLAIR, THOMAS BARTON	AKGAD	FBAN	FAIRBANKS	AK		POV
07/24/201	08:00:	O-208	CALLAHAN, CYRUS	AKDTS	GMEC	FAIRBANKS	AK		AOV
07/24/201	08:00:	O-187	YOUNG, TAMAR	AKAKD	SMKJ	FAIRBANKS	AK		REN
07/24/201	10:00:	O-36	BEST, JESSE	MTNWS	HEB1	KALISPELL	MT	GPI	AIR
07/24/202	10:00:	C-50	KALTAG CAMP CREW	AKGAD	CC	KALTAG	AK	KAL	AIR
07/24/201	20:00:	O-48	GROSSARTH, PHIL	MTLNF	IMSM	MISSOULA	MT	MSO	AIR
07/24/201	20:00:	O-308	POXLEITNER, DAVID N	IDNPF	IMST	KEUTERVILLE	ID	LWS	AIR
07/24/201	20:00:	O-309	GREGG, DOUGLAS	IDNPF	IMSM	LEWISTON	ID	LWS	AIR
07/25/201	10:00:	O-147	TURNER, RADONNA	AKSCS	THSP	PALMER	AK	ANC	AIR
07/25/201	10:00:	O-185	PINDELL, DARLA DEANN	AKASO	PTRC	ANCHORAGE	AK		POV
07/25/201	11:00:0	O-77	GLOVER, MARCI L	FLFLS	COST	PANAMA CITY	FL	ECP	AIR
07/25/201	11:00:0	O-156	ROSSER, AMBER MEGAN	AKDFS	RCDM	WASILLA	AK	ANC	AIR

# HANDWASHING IS THE IN THING TO DO.



Call me Beta STREPTOCOCCI Group A—I'm delighted to give you a sore throat.

Hi! I'm STAPHYLOCOCCUS. How would you like a big zit or boil?

I go by the handle of KLEBSIELLA. I can cause wound infections.

I am CLOSTRIDIUM DIFFICILE. I cause colitis.

I love people! To show you how much—I cause urinary tract infections. I'm PROTEUS.

They call me HAEMOPHILUS. I can cause a highly contagious conjunctivitis (Pinkeye).

I'm TOUGH! The gang calls me PSEUDOMONAS AERUGINOSA. I infect wounds and produce blue-green pus.

BOO! I'm E. coli — short for ESCHERICHIA coli. I cause nice things like diarrhea or urinary tract infections.

My name is BACILLUS SPECIES and I'm a normal contaminate.

I'm known as INFLUENZA A among other things. I love to give you pneumonia.

Everybody likes me. I cause diarrhea. My name is SHIGELLA.

You can call me BACTEROIDES. If you don't wash after a BM I can give you many things. How would you like an ear infection or vaginitis?

- Don't spread these germs to others.
- Wash hands often.
- Wash after going to the bathroom.
- Wash before eating.

Handwashing is the single most important thing to stop spreading infection.



CARE-TECH LABORATORIES  
Department of Microbiology  
1224 South Kingshighway Boulevard  
St. Louis, Missouri 63139-4103  
Tel./Fax: 1-800-325-9381

**North Pole ICP**  
**(907) 451-0590**  
**Dial 9 For An Outside Line**

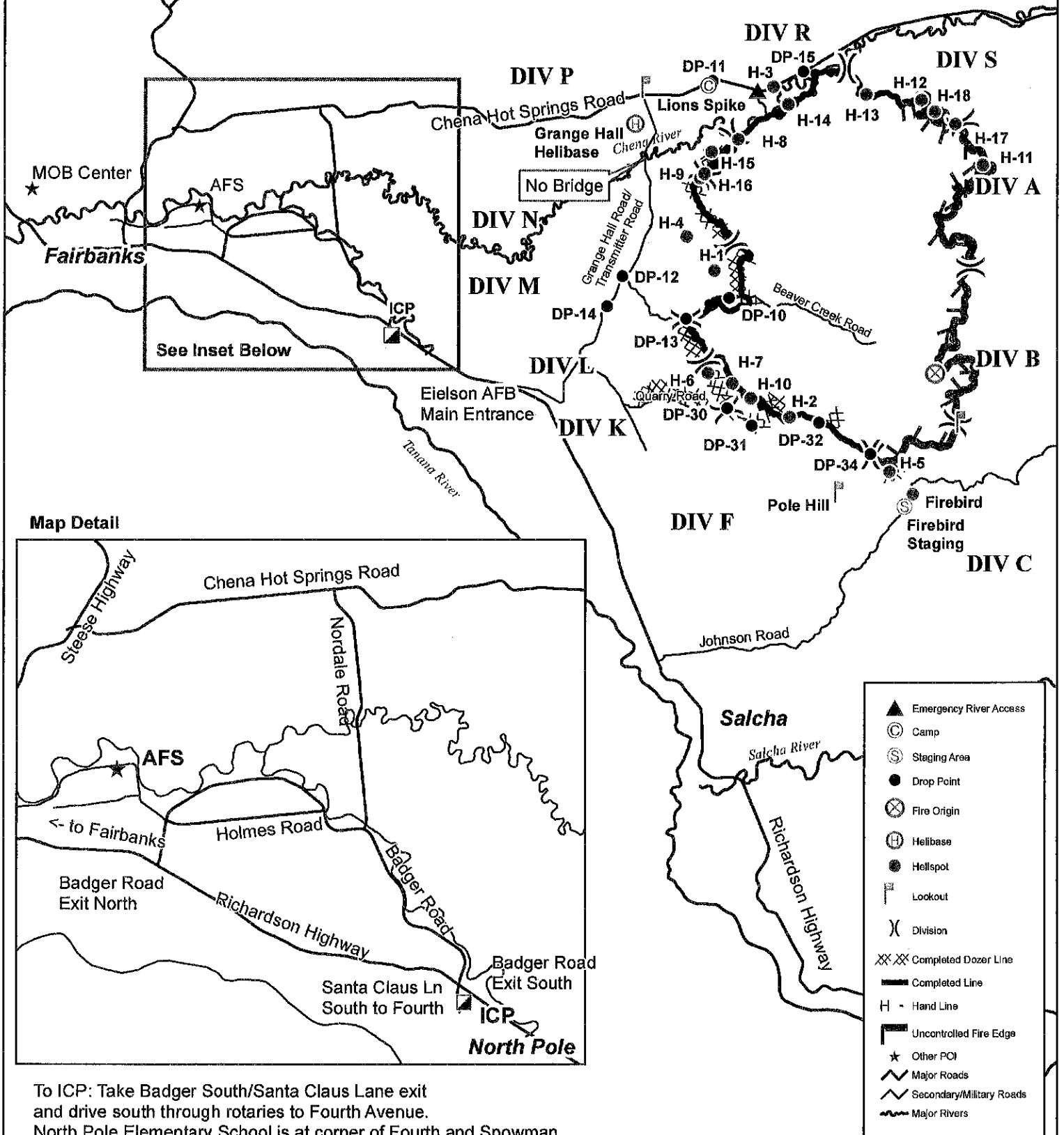
<b>Section</b>	<b>Extension</b>
Incident Commander / Liaison	30263
Public Information	<b>(907) 451-0597</b> 30260
Safety Officer / Operations	30265
Plans Section Chief / Training Specialist / Computer Tech Spec / Documentation Unit Leader	30262
Incident Meteorologist / Situation Unit Leader / Fire Behavior	30261
Check In / Resource Unit / DMOB	30256
Check In / Resource Unit / DMOB Fax	<b>(907) 490-2831</b>
Finance Section Chief / Time Unit	30254
Cost Unit	30255
Finance Fax	<b>(907) 490-2833</b>
Logistics Section Chief / Facilities	30257
<b>Communications Unit</b>	<b>30264</b>
Medical Unit Leader	30228
Ground Support	30258
Supply / Ordering	30259
Supply / Ordering Fax	<b>(907) 490-2832</b>
Please Stop Using This Fax	<del>(907) 488-1232</del>
<b>Spike / Remote Camps</b>	
Helibase	407-591-3292
Lion Spike	951-961-8794

Updated 07.20.13 0852 Hrs.

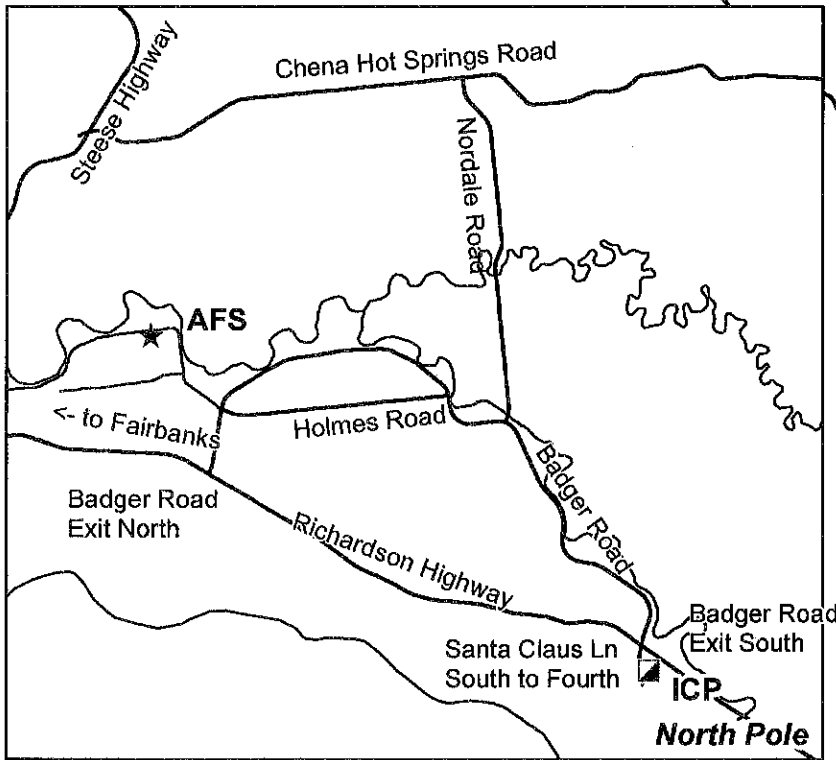
\*\*\*Any changes please contact the Communications Unit extension 30264



**Stuart Creek 2**  
**AK-MID-000280**  
**Transportation Map**  
 Approx 85,475 acres  
 NAD 83 Alaska Albers



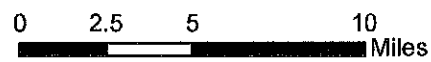
**Map Detail**



To ICP: Take Badger South/Santa Claus Lane exit and drive south through rotaries to Fourth Avenue. North Pole Elementary School is at corner of Fourth and Snowman.

To Chena Hot Springs Road: Take Badger Road to Nordale, and follow Nordale north to Chena Hot Springs Road.

▲	Emergency River Access
○	Camp
⊙	Staging Area
●	Drop Point
⊗	Fire Origin
⊕	Helibase
●	Hellspot
⌚	Lookout
X	Division
XX XX	Completed Dozer Line
—	Completed Line
H	Hand Line
▬	Uncontrolled Fire Edge
★	Other POI
—	Major Roads
—	Secondary/Military Roads
—	Major Rivers



## Frequently Used Coordinates

Point	Latitude	Longitude	Notes
Fire Origin	64 41.741 N	146 35.557 W	
Aerial Hazard Ht-1	64 40.534 N	146 45.743 W	AERIAL HAZARD 150 ft tower Ht-1
Lookout	64 39.907 N	146 33.946 W	
Lookout	64 53.038 N	146 57.583 W	
Pole Hill	64 37.905 N	146 44.918 W	
Grange Hall Helibase	64 51.770 N	146 58.670 W	
Firebird Helispot	64 37.546 N	146 38.547 W	
H-1	64 46.275 N	146 53.233 W	Good for type 2 & 3 helicopters
H-2	64 40.768 N	146 48.229 W	Good for Type 1, 2, and 3 helicopters
H-3	64 52.552 N	146 46.660 W	Good for medivac & troops. Type 1, 2, & 3 helicopters
H-4	64 47.591 N	146 55.300 W	Good for medivac & troops. Type 2, & 3 helicopters
H-5	64 38.415 N	146 40.352 W	
H-6	64 42.647 N	146 54.695 W	
H-7	64 42.180 N	146 52.736 W	
H-8	64 50.831 N	146 50.074 W	
H-9	64 49.620 N	146 53.630 W	
H-10	64 41.589 N	146 51.316 W	Log Deck; good for Type 2 & 3 helicopters
H-11	64 48.940' N	146 29.534' W	Log Deck; good for Type 2 & 3 helicopters
H-12	64 51.489 N	146 34.237 W	
H-13	64 51.920 N	146 38.841 W	
H-14	64 51.875 N	146 45.560 W	
H-15	64 50.495 N	146 52.449 W	
H-16	64 49.747 N	146 53.253 W	
H-17	64 50.506 N	146 31.526 W	
H-18	64 51.039 N	146 33.197 W	
Water Source	64 42.040 N	147 01.905 W	
DP-10	64 45.231 N	146 52.250 W	
DP-11	64 52.993 N	146 51.746 W	
DP-12	64 46.412 N	147 01.031 W	
DP-13	64 44.648 N	146 56.080 W	
DP-14	64 45.388 N	147 02.600 W	
DP-15	64 52.971 N	146 44.011 W	
DP-30	64 41.314 N	146 53.391 W	
DP-31	64 40.593 N	146 51.481 W	
DP-32	64 40.440 N	146 45.842 W	
DP-34	64 39.111 N	146 41.783 W	
Lions Spike	64 52.809 N	146 52.895 W	
Mike Spike	64 45.231 N	146 52.250 W	
November Spike	64 48.626 N	146 54.064 W	
Maryland Spike	64 50.617 N	146 50.643 W	
Delaware Spike	64 50.451 W	146 51.588 W	
Kentucky Spike	64 49.834 N	146 53.113 W	
Romeo Spike	64 51.863 N	146 46.092 W	
Meadows Spike	64 50.504 N	146 52.445 W	
Sierra Spike	64 51.489 N	146 34.237 W	
Whiskey Spike	64 52.370 N	146 44.128 W	
Firebird Staging	64 37.101 N	146 39.391 W	
South Chena #2	64 49.987 N	146 47.099 W	Helitack must protect
South Chena #3	64 49.853 N	146 46.433 W	Helitack must protect
Sling Site 1	64 50.829 N	146 50.059 W	
Sling Site 2	64 50.409 N	146 50.804 W	
Sling Site 3	64 50.428 N	146 51.518 W	
Sling Site 4	64 50.572 N	146 52.458 W	
Sling Site 5	64 49.988 N	146 52.330 W	
Sling Site 6	64 49.852 N	146 53.069 W	
Sling Site 7	64 50.626 N	146 50.571 W	
Airboat Fueling Site	64 51.513 N	146 33.861 W	
Emergency River Access	64 52.460 N	146 48.054 W	





<b>MEDICAL PLAN</b> Pg 1 of 2	1. INCIDENT NAME <b>Stuart Creek 2</b>	2. DATE PREPARED July 22, 2013	3. TIME PREPARED 1700	4. OPERATIONAL PERIOD July 23, 2013 0800-2200
----------------------------------	---	-----------------------------------	--------------------------	---

5. INCIDENT MEDICAL AID STATIONS			
MEDICAL AID STATIONS	LOCATION	ALS	
		YES	NO
Grange Hall Helibase	Mm 20 ¾ Chena Hot Springs Rd	X	
Firebird Staging	Firebird Assault Strip	X	
Line EMTs as assigned	Assigned Divisions		
North Pole ICP	North Pole Elementary School		X

6. TRANSPORTATION				
A. AMBULANCE SERVICES				
NAME	LOCATION	PHONE	ALS	
			YES	NO
Eielson AFB	AFB	911 or (907)356-5551	X	
Steese FD Ambulance (Pleasant Valley Area)	Pleasant Valley, AK	911 or (907)450-6507	X	

B. INCIDENT AMBULANCES			
NAME	LOCATION	ALS	
		YES	NO
Ft Wainwright FD Ambulance (ground)	Div C/F/K(Day) Firebird Spike(Night) (907)529-9905	X	

C. MEDIVAC SERVICES					
NAME	LOCATION	PHONE	Hoist	ALS	
				ALS	BLS
Incident Helicopter	Helibase	Contact Air Ops on Command			
Evergreen Medivac (Type 2 Helicopter)	Ft Greely, Delta Junction, AK	(907)353-9170 (907)356-5551	X	X	
Guardian Flight (Fixed wing)	Fairbanks	(907)356-5551		X	

7. HOSPITALS								
NAME	ADDRESS	TRAVEL TIME		PHONE	HELIPAD		BURN CTR	
		AIR	GRND		YES	NO	YES	NO
Fairbanks Memorial 64*49.90' x 147*44.50'	1650 Cowles Street, Fairbanks, AK 99701	30 min	90 min	(907)458-5556 (907)353-9170	X			X
Anchorage-Providence Hosp 61*11.62' x 149*49.42'	3200 Providence Dr Anchorage, AK 99504	2 hrs	6 hrs	(907)212-3111	X			X
Harborview Burn Center 47* 36.190 x 122*19.500	325 9th Ave Seattle, WA 98104	4hrs		(206) 284-2876	X		X	

**8. MEDICAL EMERGENCY PROCEDURES**

**Fireline** : Resources should identify crew/unit EMS personnel and assigned line EMTs at beginning of shift.

In the event of a medical emergency follow the  
**"First on Scene Protocols"** listed on pg 2 of the daily incident medical plan.

**ICP**: For Life-Threatening Emergencies, phone 911 then notify Communications

ICS 206	9. PREPARED BY: (Medical Unit Leader) <i>Chuck Passek</i> Chuck Passek, MEDL	10. REVIEWED BY: (Safety Officer) <i>Tom Greiling</i> Tom Greiling, SOF2
---------	--	--

## First On Scene Protocols

IRPG Insert 2011

1. Line supervisor (i.e. FFT1, CRWB, STLD, TFLD) notifies DIVS on **Command frequency** and states nature of illness/injury. Is it life threatening?

**LIFE THREATENING = MEDIVAC**

**NON-LIFE THREATENING = MEDICAL TRANSPORT**

2. If life threatening request that the designated radio frequency be cleared for emergency traffic.
3. Identify the on-scene point of contact (POC) by resource type and last name (i.e. POC is TFLD Smith).
4. Identify the nature of the incident, number injured, patient assessments and location (geographic and GPS coordinates).
5. Identify on-scene medical personnel by position and name (i.e. EMT Basic Smith)
6. Identify preferred method of patient transport.
7. Request any additional resources and/or equipment needed.
8. Document all information received and transmitted on the radio and phone.
9. Identify any changes in the on-scene POC or medical personnel as they occur.

### Patient assessment & treatment

<b>PATIENT #1:</b> <i>consciousness / unconsciousness</i> <i>Breathing rate: fast / slow</i> <i>Pulse rate</i> _____ Obvious Injury: <i>Cut / Bleeding</i> : <i>Heat</i> : <i>Fracture open / closed</i> : <i>Head injury</i> : <i>Bee sting allergic reaction</i> : <i>Eye injury</i> Burn location _____ Other info: _____	
<b>PATIENT #2:</b> <i>consciousness / unconsciousness</i> <i>Breathing rate: fast / slow</i> <i>Pulse rate</i> _____ Obvious Injury: <i>Cut / Bleeding</i> : <i>Heat</i> : <i>Fracture open / closed</i> : <i>Head injury</i> : <i>Bee sting allergic reaction</i> : <i>Eye injury</i> Burn location _____ Other info: _____	
<b>PATIENT LOCATION / GPS:</b>	<b>LZ location / GPS:</b>
<b>On-scene Point of Contact POC:</b>	<b>Patient distance from LZ</b>
<b>On-scene Medical Personnel:</b>	<b>Operational Channel (should be Command Frequency):</b>
<b>Equipment Needed:</b> Hoist : SKED : Backboard : Litter Rope : Trauma kit : Oxygen : IV fluids	<b>LZ Hazards &amp; Ground Contact</b>
<b>Mode of Patient Transport:</b> AIR / GROUND	<b>Patient Affiliation:</b> Agency / contractor / military