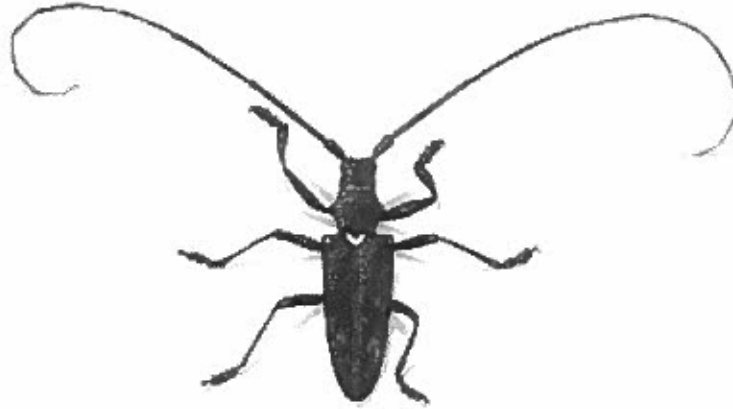


original

STUART CREEK 2 FIRE

AK-MID-000280



Whitespotted Sawyer by Adelaide Tyrol

August 4th, 2013
Day 0800 - 2200

Meeting Schedule

08:00 Briefing
Simulcast over the radio

Charge Codes

BLM- HK8H
State-332280
Forest Service- PDHK8H

NEW QR Code

If you have a smartphone or tablet, download the PDF Maps App by Avenza to start accessing map products from your smart device. Scan the QR code (using RL Classic), then download and open the map in PDF Maps on your device.

*Be sure to enable the location settings on your device or you won't be able to see yourself on the map surface.



ICS Form 203 ORGANIZATION ASSIGNMENT LIST		1. INCIDENT NAME	2. DATE PREPARED	3. TIME PREPARED
		Stuart Creek 2	8-3-13	1800
5. INCIDENT COMMAND STAFF		4. OPERATIONAL PERIOD (DATE/TIME)		
Type 3 Team (Branson)		8/4/13 0800-2200		
Position	Name	9. OPERATIONS SECTION		
INCIDENT COMMANDER	Willie Branson / Adam Kohley (t)	CHIEF	James Sullivan	
DEPUTY		PLANNING OPS		
SAFETY OFFICER	Doug Mackey (t)	DEPUTY OPS		
INFORMATION OFFICER	Terry Anderson	a. BRANCH		
LIAISON OFFICER	Randy Lenon	DIVISION	B/C	Chris Moore
HUMAN RESOURCE SPECIALIST		DIVISION	R	Chris Swisher
6. AGENCY REPRESENTATIVES		DIVISION	A/S	Lakota Burwell
AGENCY	NAME	DIVISION	REHAB	Christian Blankenship
US Army	Col. Johnson	DIVISION	F/K/L/M/N/P	Unstaffed
US Air Force	Maj. Majken Tutty	DIVISION		
Alaska State Parks	Ian Thomas	DIVISION		
Alaska Fire Service	Jake Dollard	DIVISION		
Fairbanks N. Star Borough	Dave Gibbs	DIVISION		
Alaska DNR	Gordon Amundson	b. BRANCH		
Alaska State Troopers	Capt. Barrick	BRANCH DIRECTOR		
		HUSKY STG	STAGING	
		GROUP		
7. PLANNING SECTION		DIVISION		
CHIEF	Tim Epp	DIVISION		
CHIEF		DIVISION		
RESOURCES UNIT		DIVISION		
SITUATION UNIT		DIVISION		
STRATEGIC OPS PLANNER		DIVISION		
DEMOBILIZATION UNIT		DIVISION		
CTSP		c. BRANCH -		
TNSP				
FBAN / LTAN				
IMET				
GISS	Daniel Griggs			
READ	Josh Buzby / Dan Rees			
Range Control	(Day) Beck / (Night) Stepp			
8. LOGISTICS SECTION		d. AIR OPERATIONS BRANCH		
CHIEF	Chris Friar	AIR OPERATIONS BR. DIR.	Bob Schober	
CHIEF		AIR TACTICAL GROUP SUP.	Bert Mitman	
a. SUPPORT BRANCH		AIR SUPPORT GROUP SUP.		
SUPPLY UNIT				
FACILITIES UNIT				
GROUND SUPPORT UNIT	Dale Woitas			
b. SERVICE BRANCH				
COMMUNICATIONS UNIT	Lindsey Lien			
COMMUNICATIONS MANG				
FOOD UNIT				
RECEIVING				
ORDERING				
MEDICAL UNIT				
PREPARED BY (RESOURCES UNIT)		10. FINANCE/ADMINISTRATION SECTION		
Tim Epp (Plans)		CHIEF		
		CHIEF		
		TIME UNIT	Judy Gau	
		PERSONAL TIME		
		COMPENSATION/CLAIMS UNIT		
		COST UNIT	Eileen Crouse	
		EQUIPMENT TIME	Kat Sam	

Incident Objectives	1. Incident Name	2. Date Prepared	3. Time Prepared
	MID Stuart Creek 2	08/03/13	1520

4. Operational Period
08/04/13 Sunday DAY Shift 0800 - 2200

Control Objectives:

- Keep Fire:
- East of a line along the Transmitter Road, north to the Chena River and south along the Trans-Alaska Pipeline to the Salcha River.
 - South of the Chena River.
 - North of the Salcha River.
 - West of the South Fork Chena River, south along eastern boundary of the Training Area, south to the Salcha River.

Management Objectives:

- Provide for firefighter and public safety utilizing risk management practices.
- Protect military infrastructure, private residences, cabins, improvements and jurisdictional lands within and adjacent to the fire area.
- Support local unit initial attack as requested.
- Minimize or mitigate threats to known cultural resources by utilizing Resource Advisors and/or Archeologists.
- Coordinate and communicate fire information with the public and all stakeholders.
- Coordinate and implement fire suppression repair plan.
- Minimize threats and impacts to riparian areas, critical watershed and other high value natural resources.

6. Weather Forecast for Period



Outlook for Sunday: Weather: Mostly cloudy. Isolated thunderstorms in the afternoon.
High Temperature..... 72
Min RH.....35%
20-FOOT WINDS: Ridgetop.....Southwest 3-7 mph, gusting to 12 mph on ridgetops
CWR (>=0.10")....0%
LAL.....2

7. General Safety Message for 8/4/13

UXO should not be an issue, but may exist... Stay out of restricted areas. Don't get complacent. Look down. Driving. Keep your speed down. When parked, stage vehicles in safe locations and turnouts along the roadway. With personnel at a minimum, don't allow yourself to get over extended. Hydrate. Remember the 3 to 1 rule (3 water to 1 Gatorade).

8. Attachments (mark if attached)

<input checked="" type="checkbox"/> Organization List - ICS 203	<input checked="" type="checkbox"/> Incident Map	<input type="checkbox"/>
<input checked="" type="checkbox"/> Div. Assignment Lists - ICS 204	<input checked="" type="checkbox"/> Safety Message	<input type="checkbox"/>
<input checked="" type="checkbox"/> Communications Plan - ICS205	<input type="checkbox"/> Traffic Plan	<input type="checkbox"/>
<input checked="" type="checkbox"/> Medical Plan - ICS 206	<input type="checkbox"/> Human Resource	<input type="checkbox"/>
<input checked="" type="checkbox"/> Air Operations Summary - ICS 220	<input type="checkbox"/> Transportation Map	<input type="checkbox"/>

9. Prepared by (Planning Section Chief) TIM EPP 	10. Approved by (Incident Commander) WILLIE BRANSON 
--	--

Division Assignment List	1. Branch	2. Division/Group B/C
---------------------------------	-----------	---------------------------------

3. Incident Name MID Stuart Creek 2	4. Operational Period 08/04/13 Sunday DAY Shift 0800 - 2200
--	--

5. Operations Personnel			
Operations Chief	James Sullivan	Division/Group Supervisor	CHRIS MOORE 8/13
Operations Chief		Air Attack Supervisor	
Branch Director		Safety Officer	

6. Resources Assigned this Period					
Strike Team/Task Force/ Resource Designator	Leader	Num of Pers.	Trans. Y/N	Drop Off PT./Time	Pick Up PT./Time
CHENA HOTSHOTS	CHRIS MARABETTA	20	N	FIREBIRD SPIKE 0800	FIREBIRD SPIKE 0800
MIDNIGHT SUN HOTSHOTS	JAKE LIVINGSTON	20	N	FIREBIRD SPIKE 0800	FIREBIRD SPIKE 0800
STCR O-338-COLLINS BONDS 8/5		1	N	FIREBIRD SPIKE 0800	FIREBIRD SPIKE 0800
TFLD WADE MCPHETRIDGE		1	N	FIREBIRD SPIKE 0800	FIREBIRD SPIKE 0800
TFLD DIRK GILES		1	N	FIREBIRD SPIKE 0800	FIREBIRD SPIKE 0800
ENG T6 E-389 BIG STATE	LOUIS SILAS	3	N	FIREBIRD SPIKE 0800	FIREBIRD SPIKE 0800
WTDR E-381	EDWARD "MARTY" MARTIN	1	N	FIREBIRD SPIKE 0800	FIREBIRD SPIKE 0800
FT WAINWRIGHT TASK FORCE		6	N	FIREBIRD SPIKE 0800	FIREBIRD SPIKE 0800
FT WAINWRIGHT AMBULANCE		2	N	FIREBIRD SPIKE 0800	FIREBIRD SPIKE 0800
ENG T6 E-385 BRUSH 52	CHRIS HUGHESMAN	2	N	FIREBIRD SPIKE 0800	FIREBIRD SPIKE 0800
ENG T6 E-384 PARK SERVICE		2	N	FIREBIRD SPIKE 0800	FIREBIRD SPIKE 0800
WTDR E-393 CHIPS GRAVEL	ROBERT STOCKTON	1	N	FIREBIRD SPIKE 0800	FIREBIRD SPIKE 0800
ENG T6 E-388 ENGINE 31	JASON AIGELDINGER	1	N	FIREBIRD SPIKE 0800	FIREBIRD SPIKE 0800

7. Control Operations

DIVS brief with Operations for instruction on communicating with Range Control.
 Protect sites in Division B on North Camera RD.
 Continue to hold burn from yesterday.

8. Special Instructions

*SEE COMMUNICATION PLAN FOR DIVISION TACTICAL CHANNEL ASSIGNMENTS (ICS FORM 205).
 Divisions order tactical air resources from UYT dispatch on Command 1 or Command 3.
 Call in supply orders to communications by 0900 and 1800.
 Nordale bridge closed 8/2 (2300)-8/5 (0700).
 All line personnel must receive a UXO briefing before engaging in operations.
 Ft Wainwright task force includes engine 941 and 942.

9. Division/Group Communications Summary							
Function	Frequency - RX	Frequency - TX	Tone	System	Channel	System	Channel
Command	168.1000N	170.4500N	123.0	NIFC	1		
Tactical	166.7250N	166.7250N		NIFC	6		
Logistics							
Air to Ground	169.1500N	169.1500N		NIFC	12		

Prepared by (Resource Unit Leader) TIM EPP	Approved by (Planning Section Chief) TIM EPP	Date Prepared 08/03/13	Time Prepared 1520
---	---	---------------------------	-----------------------

AIR OPERATIONS SUMMARY		PREPARED BY: Bob Schober (Air Support Safety)		DATE/TIME PREPARED: 8/3/2013 2000 hrs.									
1. INCIDENT NAME: Stuart Creek # 2		2. OPERATIONAL PERIOD DATE: 8/04/2013		START TIME: 0900									
3. REMARKS (Safety Notes, Hazards, Air Operations, Special Equipment, etc.): 150' Tower erected at Bravo 2 FIXED WING BE AWARE OF HELIBASE LOCATION 12 HOUR DUTY DAY RESTRICTIONS FOR TANKERS STARTING LADD tower control is operational at this time-use caution with in/out traffic Assume roads have wires Range Control Freq 125.300, Military Aircraft only in the Impact Zone, Use caution when smoke is heavy and visibility is limited, <i>Medivac Hospital freq 155.160</i>		4. Medivac Available on request. Go direct through UYT		5. TFR: (A-35) TFR 3/8848 in place. Polygon shape. At and below 5000 feet MSL.									
6. PERSONNEL		7. FREQUENCIES		8. FIXED-WING #Available/Type/Make-Model/FAA NH/ & Bases: LADD									
Phone	AM	FM											
AFS Helibase: Tom Schmidt	(907) 356-5659	128.45 (A-1) 123.1500 (A-74) (Tactical)	Air Tankers: T-152 @ Palmer, T-155 @FBKS										
UYT Dispatch	(907) 356-5553	128.45 (A-1) (Tactical) 123.1500(A-74)	Scoopers: 264,267- FBKS										
Air Support (Safety / Military Airspace): Bob Schober	(907) 388-5547	169.1500N 2 nd A/G166.6750N (A-75)	Available at LADD, order direct through UYT Dispatch.										
		UYT Blue: 166.875 DECK: 163.100 (A-30)	Lead planes & ASMs: Available at LADD, order direct through UYT Dispatch										
		COMMAND 1. RX 168.1000 TX 170.4500 RX/TX T-123.0 COMMAND 3. RX 170.0125 TX 165.2500 RX/TX T-123.0	ATGS Aircraft:										
		DECK FREQ.: 163.100 (A-30)											
		TOLC FREQ.:											
9. HELECOPTERS (Use Additional Sheets As Necessary)													
FAA N#	T Y	MAKE	BASE	AVAIL	START	REMARKS	FAA N#	T Y	MAKE/MODEL	BASE	AVAIL	START	REMARKS
508EH	2	Bell 212, Mgr. Karl Franke 907-378-6050	AFS Helibase	1000	1030	Exclusive Use							
911CV A-8	3	B-3 A-Star, Mgr. Greg Bryce 970-978-7738	AFS Helibase	0900	0930	Stuart Fire							
399EH A-36	2	Bell 212, Mgr. Brian Deck. 208-841-6995	AFS Helibase	0900	0930	Stuart Fire							

3. Basic Radio Channel Utilization

Radio Type	Channel	Function	Frequency/Tone		Assignment	Remarks
NIFC	1	CMD 1	RX 168.1000N	TX 170.4500N	COMMAND	POLE HILL (South) Linked with CMD 3 Monitored by UYT-Dispatch
			Transmit 123.0			
NIFC	3	CMD 3	RX 170.0125N	TX 165.2500N	COMMAND	Center of Fire Hill (North) Linked with CMD 1 Monitored by UYT-Dispatch
			Transmit 123.0			
NIFC	4	TAC 1	RX 168.0500N	TX 168.0500N	Div A/S Div M/N	
NIFC	5	TAC 2	RX 168.2000N	TX 168.2000N	Div R	
NIFC	6	TAC 3	RX 166.7250N	TX 166.7250N	Div K/L Div B/C	
NIFC	7	TAC 4	RX 168.2500N	TX 168.2500N	Div F Div P Rehab Group	
NIFC	8	CMD 4	RX 170.3625N	TX 163.3875	COMMAND	*Not Currently Installed*
			Transmit 123.0			
NIFC	9		RX	TX	C	This Repeater removed from incident
			Transmit			
Alaska	10	IA Tac 2	RX 166.7750N	TX 166.7750N	**Reserved for Initial Attack**	Alaska Interagency Initial Attack Tac 2
Alaska	11	IA Tac 1	RX 159.3750N	TX 159.3750N	**Reserved for Initial Attack**	Alaska Interagency Initial Attack Tac 1
NIFC	12	A/G 1	RX 169.1500N	TX 169.1500N	Air to Ground Primary	
NIFC	13	A/G 2	RX 166.6750N	TX 166.6750N	Air to Ground Secondary	
			Transmit 110.9			
NIFC	14	Air Guard	RX 168.625	TX 168.625	All Divisions Emerg Traffic	Emergency Contact with Aviation Resources
			Transmit Tone 110.9			
						Avail for Interagency Initial Attack Air/ Ground: 166.6375 Not currently in Radio
NIFC	16	Air Guard	RX 168.6250N	TX 168.6250N	All Divisions Emerg Traffic	Emergency Contact with Aviation Resources
			Transmit Tone 110.9			

4. Prepared by (Communications Unit)

Lindsey Lien, COML (907) 378-4608

ALL FREQUENCIES ARE NARROWBAND

5. Date Prepared

08/03/13

6. Time Prepared

0639

AK-MID-000280 8/4 STUART CREEK 2

TYPE 3 TEAM cell phones

<u>ICT3 (t):</u>	ADAM KOHLEY	907-978-7016
<u>ICT3:</u>	WILLIE BRANSON	907-750-9294
<u>SAFETY:</u>	DOUG MACKEY	907-460-2552
<u>INFORMATION</u>	TERRY ANDERSON	907-750-1639
<u>OPERATIONS:</u>	JAMES SULLIVAN	907-460-4076
<u>PLANS:</u>	TIM EPP	907-388-5455
<u>LOGISTICS:</u>	CHRIS FRIAR (ICP)	907-388-2715
	DALE WOITAS (GRND SUPPORT)	907-347-4416
	JOE FAULISE (FIREBIRD)	907-779-5492
<u>COMMUNICATIONS:</u>	LINDSEY LIEN	907-378-4608
<u>AIR OPS:</u>	BOBBY SCHOBER	907-388-5547
<u>REHAB:</u>	CHRISTIAN BLANKENSHIP	907-378-9437

ICP at Alaska Fire Service

<u>Fax:</u>	907-356-5893
<u>Information:</u>	907-356-5885
<u>Finance:</u>	907-356-5886
<u>Logistics:</u>	907-356-5892
<u>Helibase:</u>	907-356-5659
<u>UYT DISPATCH:</u>	907-356-5554

MEDICAL PLAN

Pg 1 of 2

1. INCIDENT NAME
Stuart Creek 2

2. DATE PREPARED
August 3, 2013

3. TIME PREPARED
2200

4. OPERATIONAL PERIOD
8/4/2013
0800-2200

5. INCIDENT MEDICAL AID STATIONS

MEDICAL AID STATIONS	LOCATION	ALS	
		YES	NO
	EMTs available from all crews.		X

6. TRANSPORTATION

A. AMBULANCE SERVICES

NAME	LOCATION	PHONE	ALS	
			YES	NO
Eielson AFB	AFB	911 or (907)356-5551	X	
			X	

B. INCIDENT AMBULANCES

NAME	LOCATION	ALS	
		YES	NO
Ft Wainwright Ambulance Med 95 (Donald Wade)	Firebird Spike (907)750-3333	X	

C. MEDIVAC SERVICES

NAME	LOCATION	PHONE	Hoist	ALS		BLS
				YES	NO	
Incident Helicopter	Helibase	Contact Air Ops on Command				
Evergreen Medivac (Type 2 Helicopter)	Ft Greely, Delta Junction, AK	(907)353-9170 (907)356-5551	X	X		
Guardian Flight (Fixed wing)	Fairbanks	(907)356-5551		X		

7. HOSPITALS

NAME	ADDRESS	TRAVEL TIME		PHONE	HELIPAD		BURN CTR	
		AIR	GRND		YES	NO	YES	NO
Fairbanks Memorial 64*49.90' x 147*44.50'	1650 Cowles Street, Fairbanks, AK 99701	30 min	90 min	(907)458-5556 (907)353-9170	X			X
Anchorage-Providence Hosp 61*11.62' x 149*49.42'	3200 Providence Dr Anchorage, AK 99504	2 hrs	6 hrs	(907)212-3111	X			X
Harborview Burn Center 47* 36.190 x 122*19.500	325 9th Ave Seattle, WA 98104	4hrs		(206) 284-2876	X		X	

8. MEDICAL EMERGENCY PROCEDURES

In the event of a medical emergency follow the
"**First on Scene Protocols**" listed on pg 2 of the daily incident medical plan.

For Life-Threatening Emergencies, phone 911 then notify UYT Dispatch on
Command 1 or 3 or phone at (907)356-5554.

Resources should identify crew/unit EMS personnel and assigned line EMTs at
beginning of shift.

ICS 206

9. PREPARED BY: (Safety Officer)



10. REVIEWED BY: (IC)

Willie Branson



First On Scene Protocols

IRPG Insert 2011

1. Line supervisor (i.e. FFT1, CRWB, STLD, TFLD) notifies DIVS on **Command frequency** and states nature of illness/injury. Is it life threatening?

LIFE THREATENING = MEDIVAC

NON-LIFE THREATENING = MEDICAL TRANSPORT

2. If life threatening request that the designated radio frequency be cleared for emergency traffic.
3. Identify the on-scene point of contact (POC) by resource type and last name (i.e. POC is TFLD Smith).
4. Identify the nature of the incident, number injured, patient assessments and location (geographic and GPS coordinates).
5. Identify on-scene medical personnel by position and name (i.e. EMT Basic Smith)
6. Identify preferred method of patient transport.
7. Request any additional resources and/or equipment needed.
8. Document all information received and transmitted on the radio and phone.
9. Identify any changes in the on-scene POC or medical personnel as they occur.

Patient assessment & treatment

PATIENT #1: <i>consciousness / unconsciousness</i> <i>Breathing rate: fast / slow</i> <i>Pulse rate</i> _____ Obvious Injury: <i>Cut / Bleeding</i> : <i>Heat</i> : <i>Fracture open / closed</i> : <i>Head injury</i> : <i>Bee sting allergic reaction</i> : <i>Eye injury</i> Burn location _____ Other info: _____	
PATIENT #2: <i>consciousness / unconsciousness</i> <i>Breathing rate: fast / slow</i> <i>Pulse rate</i> _____ Obvious Injury: <i>Cut / Bleeding</i> : <i>Heat</i> : <i>Fracture open / closed</i> : <i>Head injury</i> : <i>Bee sting allergic reaction</i> : <i>Eye injury</i> Burn location _____ Other info: _____	
PATIENT LOCATION / GPS:	LZ location / GPS:
On-scene Point of Contact POC:	Patient distance from LZ
On-scene Medical Personnel:	Operational Channel (should be Command Frequency):
Equipment Needed: Hoist : SKED : Backboard : Litter Rope : Trauma kit : Oxygen : IV fluids	LZ Hazzards & Ground Contact
Mode of Patient Transport: AIR / GROUND	Patient Affiliation: Agency / contractor / military