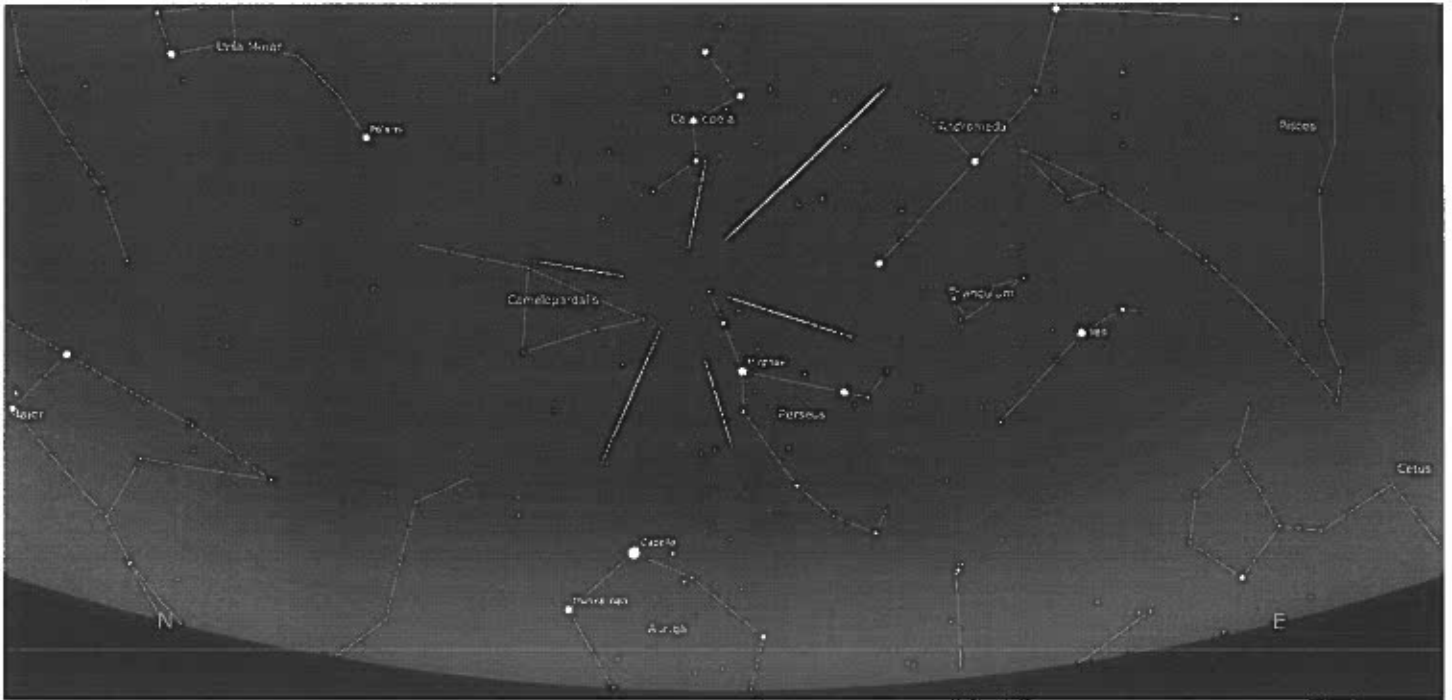


STUART CREEK 2 FIRE

AK-MID-000280



The Perseid Meteor Shower is visible for several weeks, peaking on the 12th-13th of August. Meteors will appear to radiate from the constellation Perseus in the NE sky hence their name. This is the largest meteor shower of the year and is best seen in the early morning hours before sunrise, or in Alaska whenever it gets really dark. Smoke, clouds, twilight may wash out many of the meteors but some should still be bright enough to be visible. The number of meteors builds up beginning in late July, peaking on the 12th-13th, and tapering off until late August. It is not a one night event and should be visible for several weeks in locations that have a night.

August 13th, 2013
Day 0800 - 2200

Meeting Schedule

08:00 Briefing
Simulcast over the radio

Charge Codes

BLM- HK8H
State-332280
Forest Service- PDHK8H

NEW QR Code

If you have a smartphone or tablet, download the PDF Maps App by Avenza to start accessing map products from your smart device. Scan the QR code (using RL Classic), then download and open the map in PDF Maps on your device.

*Be sure to enable the location settings on your device or you won't be able to see yourself on the map surface.



| | | | |
|----------------------------|--|------------------------------|--------------------------|
| Incident Objectives | 1. Incident Name MID Stuart Creek 2 | 2. Date Prepared 08/12/13 | 3. Time Prepared 2000 |
|----------------------------|--|------------------------------|--------------------------|

4. Operational Period
08/13/13 Tuesday DAY Shift 0800 - 2200

Control Objectives:
 Keep Fire:
 - East of a line along the Transmitter Road, north to the Chena River and south along the Trans-Alaska Pipeline to the Salcha River.
 - South of the Chena River.
 - North of the Salcha River.
 - West of the South Fork Chena River, south along eastern boundary of the Training Area, south to the Salcha River.

Management Objectives:
 - Provide for firefighter and public safety utilizing risk management practices.
 - Protect military infrastructure, private residences, cabins, improvements and jurisdictional lands within and adjacent to the fire area.
 - Support local unit initial attack as requested.
 - Minimize or mitigate threats to known cultural resources by utilizing Resource Advisors and/or Archeologists.
 - Coordinate and communicate fire information with the public and all stakeholders.
 - Coordinate and implement fire suppression repair plan.
 - Minimize threats and impacts to riparian areas, critical watershed and other high value natural resources.

6. Weather Forecast for Period
 Forecast for Tuesday:
 Weather:
 Sky: Partly cloudy.
 Max Temp..... 72° - 82°
 Min RH..... 35% - 50%
 20-FOOT WINDS: Light & variable.
 CWR (>=0.10").... 0%
 LAL..... 1

7. General Safety Message for 8/13/13
Aviation Assets:
 - See aviation message regarding Red Flag Alaska (towards the end of the IAP)
 - Flying missions inside the impact area is limited to "mission critical" assignments only. Missions must be approved by the IC and Safety.
UXO:
 - ALL resources are required to attend an UneXploded Ordinance briefing.
 - Inside the impact area and buffer zone; stay on the roads and improved areas. NO boots in the woods.
Driving:
 - Expect increased military traffic, including heavy equipment. When parked or staged, do so in a safe location. Drive with your headlights on at all times. Keep your speed down.
Bears:
 -Remember we (AFS) are tracking all bear incidents/interactions on BLM fires. Request a reporting form from Ops if you have an encounter.

8. Attachments (mark if attached)

| | | |
|--|--|--------------------------|
| <input checked="" type="checkbox"/> Organization List - ICS 203 | <input checked="" type="checkbox"/> Incident Map | <input type="checkbox"/> |
| <input checked="" type="checkbox"/> Div. Assignment Lists - ICS 204 | <input checked="" type="checkbox"/> Safety Message | <input type="checkbox"/> |
| <input checked="" type="checkbox"/> Communications Plan - ICS205 | <input type="checkbox"/> Traffic Plan | <input type="checkbox"/> |
| <input checked="" type="checkbox"/> Medical Plan - ICS 206 | <input type="checkbox"/> Human Resource | <input type="checkbox"/> |
| <input checked="" type="checkbox"/> Air Operations Summary - ICS 220 | <input type="checkbox"/> Transportation Map | <input type="checkbox"/> |

| | |
|---|--|
| 9. Prepared by (Planning Section Chief) MATT SNYDER <i>Matt Snyder</i> | 10. Approved by (Incident Commander) RANDY LENON <i>Randy Lenon</i> |
|---|--|

| ICS Form 203 ORGANIZATION ASSIGNMENT LIST | | 1. INCIDENT NAME | 2. DATE PREPARED | 3. TIME PREPARED |
|--|-------------------------------|------------------------------------|---------------------|------------------|
| | | Stuart Creek 2 | 8-12-13 | 2000 |
| 5. INCIDENT COMMAND STAFF | | 4. OPERATIONAL PERIOD (DATE/TIME) | | |
| Type 3 Team (Lenon) | | 8/13/13 0800-2200 | | |
| Position | | 9. OPERATIONS SECTION | | |
| Name | | | | |
| INCIDENT COMMANDER | Randy Lenon / Adam Kohley (t) | CHIEF | Dirk Giles | |
| | | PLANNING OPS | | |
| SAFETY OFFICER | Tim Benedict | | | |
| INFORMATION OFFICER | Maureen Clark | | | |
| LIAISON OFFICER | | DEPUTY OPS | | |
| HUMAN RESOURCE SPECIALIST | | a. BRANCH | | |
| 6. AGENCY REPRESENTATIVES | | DIVISION | B/C | Chris Moore |
| AGENCY | NAME | DIVISION | M | Mike Ottosen |
| US Army | Col. Johnson | DIVISION | REHAB | Unstaffed |
| US Air Force | Maj. Majken Tutty | DIVISION | A/F/K/L/N/P/ R/S | Unstaffed |
| Alaska State Parks | Ian Thomas | DIVISION | | |
| Alaska Fire Service | Jake Dollard | DIVISION | | |
| Fairbanks N.Star Borough | Dave Gibbs | DIVISION | | |
| Alaska DNR | Ed Sanford | DIVISION | | |
| Alaska State Troopers | Capt. Barrick | b. BRANCH | | |
| | | BRANCH DIRECTOR | | |
| | | FIREBIRD STG | STAGING | Chad Leshuk |
| | | GROUP | | |
| 7. PLANNING SECTION | | DIVISION | | |
| CHIEF | Matt Snyder | DIVISION | | |
| CHIEF | | DIVISION | | |
| RESOURCES UNIT | | DIVISION | | |
| SITUATION UNIT | | DIVISION | | |
| STRATEGIC OPS PLANNER | | DIVISION | | |
| DEMOBILIZATION UNIT | | DIVISION | | |
| CTSP | | | | |
| TNSP | | | | |
| FBAN / LTAN | | | | |
| IMET | | | | |
| GISS | Christina Ferner | | | |
| READ | Josh Buzby / Dan Rees | | | |
| Range Control | (Day) Beck / (Night) Stepp | | | |
| 8. LOGISTICS SECTION | | c. BRANCH - | | |
| CHIEF | Chris Friar | | | |
| CHIEF | | | | |
| a. SUPPORT BRANCH | | | | |
| SUPPLY UNIT | | | | |
| FACILITIES UNIT | | | | |
| GROUND SUPPORT UNIT | | | | |
| b. SERVICE BRANCH | | d. AIR OPERATIONS BRANCH | | |
| COMMUNICATIONS UNIT | | AIR OPERATIONS BR. DIR. | | |
| COMMUNICATIONS MANG | | AIR TACTICAL GROUP SUP. | John Lyons | |
| FOOD UNIT | | AIR SUPPORT GROUP SUP | Bob Simpson | |
| RECEIVING | | | | |
| ORDERING | | | | |
| MEDICAL UNIT | | | | |
| PREPARED BY (RESOURCES UNIT) | | 10. FINANCE/ADMINISTRATION SECTION | | |
| Matt Snyder (Plans) | | CHIEF | | |
| | | CHIEF | | |
| | | TIME UNIT | | |
| | | PERSONAL TIME | | |
| | | COMPENSATION/CLAIMS UNIT | | |
| | | COST UNIT | Eileen Crouse | |
| | | EQUIPMENT TIME | Kat Sam | |

| Division Assignment List | | | 1. Branch | | 2. Division/Group | | |
|--|-------------------|---|---|---------------------------|---------------------------|------------------|-----------------------|
| 3. Incident Name MID Stuart Creek 2 | | | 4. Operational Period 08/13/13 Tuesday DAY Shift 0800 - 2200 | | | | |
| 5. Operations Personnel | | | | | | | |
| Operations Chief | | DIRK GILES | | Division/Group Supervisor | | CHRIS MOORE 8/13 | |
| Operations Chief | | | | Air Attack Supervisor | | JOHN LYONS | |
| Branch Director | | | | Safety Officer | | TIM BENEDICT | |
| 6. Resources Assigned this Period | | | | | | | |
| Strike Team/Task Force/ Resource Designator | Leader | Num of Pers. | Trans. Y/N | Drop Off PT./Time | Pick Up PT./Time | | |
| FT WAINWRIGHT TASK FORCE | | 5 | N | FIREBIRD SPIKE 0800 | FIREBIRD SPIKE 2200 | | |
| FT WAINWRIGHT AMBULANCE | | 2 | N | FIREBIRD SPIKE 0800 | FIREBIRD SPIKE 2200 | | |
| ENG T6 E-389 BIG STATE 8/16 | LOUIS SILAS | 2 | N | FIREBIRD SPIKE 0800 | FIREBIRD SPIKE 2200 | | |
| ENG T6 E-384 NPS ENGINE 61 8/16 | DAN KLEIMAN | 3 | N | FIREBIRD SPIKE 0800 | FIREBIRD SPIKE 2200 | | |
| ENG T6 E-388 FS ENGINE 31 8/16 | JASON AIGELDINGER | 3 | N | FIREBIRD SPIKE 0800 | FIREBIRD SPIKE 2200 | | |
| WTDR E-381 8/16 | ED "MARTY" MARTIN | 1 | N | FIREBIRD SPIKE 0800 | FIREBIRD SPIKE 2200 | | |
| WTDR E-393 CHIPS GRAVEL 8/16 | ROBERT STOCKTON | 1 | N | FIREBIRD SPIKE 0800 | FIREBIRD SPIKE 2200 | | |
| WTDR E-395 GOLDSTREAM WATER | GLEN AMOS | 1 | N | FIREBIRD SPIKE 0800 | FIREBIRD SPIKE 2200 | | |
| TFLD(t) SETH REEDY 8/17 | | 1 | N | FIREBIRD SPIKE 0800 | FIREBIRD SPIKE 2200 | | |
| STAM CHAD LESHUK 8/21 | | 1 | N | FIREBIRD SPIKE 0800 | FIREBIRD SPIKE 2200 | | |
| 7. Control Operations | | | | | | | |
| <ul style="list-style-type: none"> - Patrol DIV C. Continue monitoring DIV B. - Identify Trigger Points for site protection in DIV B. - Continue water shuttle to keep site values wet. - Wainwright ENG-942 to DIV M - All resources avoid South Camera Rd due to radiating equipment. - North Star Crew available for IA within the TFR. - Expect 400+ Army personnel at Firebird Airstrip. | | | | | | | |
| 8. Special Instructions | | | | | | | |
| <p>See Safety Message regarding Red Flag Alaska Training Operations. UXO is a real threat. Keep all fire operations personnell on the road within the impact area. Divisions order tactical air resources from UYT dispatch on Command 1 or Command 3. Call in supply orders to communications by 0900 and 1800. All line personnel must receive a UXO briefing before engaging in operations. Ft Wainwright task force includes engine 941 and 942.</p> | | | | | | | |
| 9. Division/Group Communications Summary | | | | | | | |
| Function | Frequency - RX | Frequency - TX | Tone | System | Channel | System | Channel |
| Command | 168.1000N | 170.4500N | 123.0 | NIFC | 1 | | |
| Tactical | 166.7250N | 166.7250N | | NIFC | 6 | | |
| Logistics | | | | | | | |
| Air to Ground | 169.1500N | 169.1500N | | NIFC | 12 | | |
| Prepared by (Resource Unit Leader) MATT SNYDER | | Approved by (Planning Section Chief) MATT SNYDER | | | Date Prepared 08/12/13 | | Time Prepared 1315 |

| AIR OPERATIONS SUMMARY | | PREPARED BY: Christopher Friar (Logistics) | | DATE/TIME PREPARED: 8/12/2013 2130 hrs. | | | |
|--|---|--|--|---|-------|-------|---|
| 1. INCIDENT NAME: Stuart Creek # 2 | | 8/13/2013 | | 0900 | | | |
| 2. OPERATIONAL PERIOD DATE: | | START TIME: | | END TIME: | | | |
| 3. REMARKS (Safety Notes, Hazards, Air Operations, Special Equipment, etc.): 150' Tower erected at Bravo 2 Red Flag Training exercises will occur 8/12-8/16 and 8/19-8/22. Aircraft will be taking off and landing during the 0900-1300 hour and 1500-1900 time frames at Eielson AFB. When entering the fire TFR from the North, West and South sides adjacent to the 280 fire perimeter, contact Eielson Tower (127.2). TFR is in place. Please report any unauthorized aircraft within the TFR boundary. Assume all roads have wires. Range Control freq: 125.300. Military Aircraft only in the Impact Zone. Use caution when smoke is heavy and visibility is limited. <i>Medevac Hospital freq: 155.160.</i> | | 8/13/2013 | | 2400 | | | |
| 4. MEDEVAC A/C: | | 5. TFR: | | CIVIL TWILIGHT: | | | |
| Available on request. Contact UYT. | | 3/7906 in place as a polygonal shape ≤ 5000 feet MSL | | Begins @ 0421 Ends @ 2326 | | | |
| 6. PERSONNEL | | 7. FREQUENCIES | | 8. FIXED-WING #Available/Type/Make-Model/FAA N# & Bases: | | | |
| AFS Helibase Mgr: Tom Schmidt | Phone (907) 356-5659 | AIR/AIR FW: BRIEFING | AM 128.45 Tac: 123.15 | Air Tankers: T-142, T-152, T-155 @FBK, on @1000 Scopers: T-264, T-267 @FBKS, on @ 1000 Alberta Scopers: T-202, T-203, T-204 + Bird Dog 132 Order directly through UYT Dispatch on Command or 907-356-5554. | | | |
| UYT Dispatch | Tac: (907) 356-5554 Logs: (907) 356-5553 | AIR/AIR RW: | Tac: 128.45 123.15 | Lead planes & ASMs: Available at FBK. Order directly through UYT Dispatch. | | | |
| Air Support: Bob Simpson | (512) 663-6232 | AIR/GROUND: | | ATGS Aircraft: 9AK, on @ 1000 ATGS: John Lyons ("JL") | | | |
| | | COMMAND 1 | | | | | |
| | | COMMAND 3 | | | | | |
| 9. HELICOPTERS (Use Additional Sheets As Necessary) | | | | | | | |
| FAA N# | Type | MAKE | CONTACT | BASE | AVAIL | START | REMARKS |
| 911CV (A-8) | 3 | B-3 A-Star | HMGB Greg Bryce 970-978-7738 | AFS Helibase | 0900 | 0930 | Assigned to Stuart Creek 2 (#280) |
| 399EH (A-36) | 2 | Bell 212 | HMGB Brian Deck (208) 841-6995 | AFS Helibase | 0900 | 0930 | shared between Stuart Creek 2 (#280) and Mississippi (#117) |
| 61920 | 2 | Bell 212 | HMGB Connie Sitekell (503) 348-4581 | AFS Helibase, Staged at Firebird | 0900 | 0930 | on loan for shift |
| | | | | | | | |
| | | | | | | | |

| Incident Radio Communications Plan | | 1. Incident Name MID Stuart Creek 2 | | 2. Operational Period 08/08/13 Thursday DAY Shift 0800 - 2200 | | |
|---|---------|--|---------------------|--|------------------------------------|---|
| 3. Basic Radio Channel Utilization | | | | | | |
| Radio Type | Channel | Function | Frequency/Tone | | Assignment | Remarks |
| NIFC | 1 | CMD 1 | RX 168.1000N | TX 170.4500N | COMMAND | POLE HILL (South) Linked with CMD 3 Monitored by UYT-Dispatch |
| | | | Transmit 123.0 | | | |
| AFS | 2 | BLUE | RX 166.8750 | TX 166.8750N | BLUE REPEATER | UYT local Dispatch Repeater. For emergency use and as a backup to contact UYT. |
| NIFC | 3 | CMD 3 | RX 170.0125N | TX 165.2500N | COMMAND | Center of Fire Hill (North) Linked with CMD 1 Monitored by UYT-Dispatch |
| | | | Transmit 123.0 | | | |
| NIFC | 4 | TAC 1 | RX 168.0500N | TX 168.0500N | Div A/S Div M/N | |
| NIFC | 5 | TAC 2 | RX 168.2000N | TX 168.2000N | Div R | |
| NIFC | 6 | TAC 3 | RX 166.7250N | TX 166.7250N | Div K/L Div B/C | |
| NIFC | 7 | TAC 4 | RX 168.2500N | TX 168.2500N | Div F Div P Rehab Group | |
| NIFC | 8 | CMD 4 | RX 170.3625N | TX 163.3875 | COMMAND | *Not Currently Installed* |
| | | | Transmit 123.0 | | | |
| NIFC | 9 | | RX | TX | C | This Repeater removed from incident |
| | | | Transmit | | | |
| Alaska | 10 | IA Tac 2 | RX 166.7750N | TX 166.7750N | **Reserved for Initial Attack** | Alaska Interagency Initial Attack Tac 2 |
| Alaska | 11 | IA Tac 1 | RX 159.3750N | TX 159.3750N | **Reserved for Initial Attack** | Alaska Interagency Initial Attack Tac 1 |
| NIFC | 12 | A/G 1 | RX 169.1500N | TX 169.1500N | Air to Ground Primary | |
| NIFC | 13 | A/G 2 | RX 166.6750N | TX 166.6750N | Air to Ground Secondary | |
| | | | Transmit 110.9 | | | |
| NIFC | 14 | Air Guard | RX 168.625 | TX 168.625 | All Divisions Emerg Traffic | Emergency Contact with Aviation Resources |
| | | | Transmit Tone 110.9 | | | |
| | | | | | | Avail for Interagency Initial Attack Air/ Ground: 166.6375 Not currently in Radio |
| NIFC | 16 | Air Guard | RX 168.6250N | TX 168.6250N | All Divisions Emerg Traffic | Emergency Contact with Aviation Resources |
| | | | Transmit Tone 110.9 | | | |
| 4. Prepared by (Communications Unit) Matt Snyder PSC3 (907) 574-0304 | | | | | 5. Date Prepared 08/11/13 | 6. Time Prepared 1930 |
| *ALL FREQUENCIES ARE NARROWBAND* | | | | | | |

HEALTH AND SAFETY MESSAGE

SAFETY starts with *YOU*

We are ALL accountable for SAFE behaviors

INCIDENT: Stuart Creek 2

DATE: 08/13-14/2013

TIME: Day

Safety Thought

Know safety, no injury. No safety, know injury.

Major Hazards and Risks

- Aviation Resources
- Traffic

- Transportation
- Complacency / Fatigue

- Bears
- Dehydration

Fire Order of the Day – Recognize current weather conditions and obtain forecasts
Watch out Situation of the Day – 14. Weather is getting hotter and drier

- Main concern is to **expect heavy military traffic both on the ground and in the air.** Watch the dusty roads and adjust your distance for visibility. Slow down on blind or tight curves as you never know who may be in that curve the same time as you.
- The roads can be steep – slow down.
- UXO: Inside the impact area and buffer zone; stay on the roads and improved areas. NO boots in the woods.
- All new incoming resources must receive an UXO briefing.
- Be sure to label all fuel and date. Have appropriate fuel containers.
- Ensure instructions are clearly understood. Communication is a basic responsibility for all fire personnel. Ask appropriate questions to clarify uncertain issues. Speak up when you observe hazards that may place yourself or others at risk.
- Coordinate all operations involving air resources with clear communications.
- Drive with lights on. Drive defensively.

Identify Hazards and Make Them Known to All!

Thanks for all your hard work and focus on doing the job safely! Please keep up our great safety record.

Tim Benedict, SOF2

Safety Message

RED FLAG - ALASKA HAS BEGUN!

The following are email excerpts from the U.S. Air Force including a follow up message from BLM State Aviation Manager Gary Baumgartner:

8/6/2013 - **EIELSON AIR FORCE BASE, Alaska** -- Warfighters from around the globe are assembling at Eielson to participate in RED FLAG-Alaska 13-3, Alaska's premier combat training exercise, Aug 8 to 23.

Icemen from the 354th Fighter Wing will welcome Allied international participants from the Republic of Korea and Japan Air Self Defense Force. U.S. military personnel from Alaska, California, Washington, Alabama, Indiana, Louisiana, Oklahoma, and Japan are also deploying to support the exercise. Aircraft types will include F-16s, F-15s, A-10s, KC-135s, KC-130s and F-18s.

Interior Alaska residents may see and hear increased military flying during this exercise. There will be increased military air traffic in the Joint Pacific Alaska Range Complex and in special use airspace across the state.

RED FLAG-Alaska provides U.S. and Allied pilots, aircrews and operational support personnel the opportunity to train and improve their air combat skills in preparation for a myriad of worldwide contingencies.

All civilian pilots should note that military flying activities are not limited to exercises. Military aircraft may be encountered at any time throughout the year.

All,

The Air Force Red Flag-Alaska exercises begin August 8th and will continue through August 23rd. Expect intense activity during the Red Flag hours of operation. Allied participants will have very limited experience and/or knowledge of Alaska airspace adding to the escalated risk of fast, low flying and camouflaged aircraft in and around the MOUs and Restricted areas. The exercise participants try to stay within the hours of operations, but it's not unusual for aircraft to fly past the published hours of operations.

During Red Flag it is always a good idea to contact Eielson Range Control to determine activity levels and to inform them of your intentions. Please read the press release and the hours of operation below.

Aug. 9 ~ 0900-1100, 1330-1530, 1730-1900

Aug. 12-16 ~ 0900-1300, 1500-1900

Aug. 19-23 ~ 0900-1300, 1500-1900

~Gary

ALL resources on the Stuart Creek 2 Fire, both on the ground and in the air, need to be extremely vigilant in planning and executing all missions involving aviation.

Remember – If you see something, say something!

TYPE 3 TEAM

| | | Cell Phones |
|-------------------|-------------------|--------------|
| ICT3 (t): | ADAM KOHLEY | 907-978-7016 |
| ICT3: | RANDY LENON | 907-378-2009 |
| SAFETY: | TIM BENEDICT | 406-547-4353 |
| INFORMATION: | MAUREEN CLARK | 907-356-5511 |
| OPERATIONS: | DIRK GILES | 907-388-3146 |
| PLANS: | MATT SNYDER | 907-574-0304 |
| LOGISTICS: | CHRIS FRIAR (ICP) | 907-388-2715 |
| AIR SUPPORT: | BOB SIMPSON | 512-663-6232 |
| FIREBIRD STAGING: | CHAD LESHUK | 907-347-2813 |

ICP at Alaska Fire Service

| | | |
|------------------|-----------|--------------|
| Fax: | | 907-356-5893 |
| Information: | | 907-356-5511 |
| Finance: | | 907-356-5886 |
| Logistics: | | 907-356-5892 |
| Helibase: | | 907-356-5659 |
| RANGE CONTROL: | | 907-353-1266 |
| AIR SPACE COORD: | GARY ROSE | 520-360-5225 |
| UYT DISPATCH: | | 907-356-5554 |

| | | | | | | | | | | | | |
|---|--|--|--------------------------------|-------------------------------------|-----------------------------|--------------------------------------|--------------------------------|---|---------|-----|----------|----|
| MEDICAL PLAN Pg 1 of 2 | | 1. INCIDENT NAME Stuart Creek 2 | | 2. DATE PREPARED August 12, 2013 | | 3. TIME PREPARED 2200 | | 4. OPERATIONAL PERIOD 8/13/2013 0800-2200 | | | | |
| 5. INCIDENT MEDICAL AID STATIONS | | | | | | | | | | | | |
| MEDICAL AID STATIONS | | | LOCATION | | | | ALS | | | | | |
| | | | | | | | YES | | NO | | | |
| | | | EMTs available from all crews. | | | | | | X | | | |
| 6. TRANSPORTATION | | | | | | | | | | | | |
| A. AMBULANCE SERVICES | | | | | | | | | | | | |
| NAME | | | LOCATION | | PHONE | | | ALS | | | | |
| | | | | | | | | YES | | NO | | |
| Eielson AFB | | | AFB | | 911 or (907)356-5551 | | | X | | | | |
| | | | | | | | | X | | | | |
| B. INCIDENT AMBULANCES | | | | | | | | | | | | |
| NAME | | | LOCATION | | | | ALS | | | | | |
| | | | | | | | YES | | NO | | | |
| Ft Wainwright Ambulance Med 95 (Donald Wade) | | | Firebird Spike (907)750-3333 | | | | X | | | | | |
| C. MEDIVAC SERVICES | | | | | | | | | | | | |
| NAME | | LOCATION | | | PHONE | | | Hoist | ALS | BLS | | |
| Incident Helicopter | | Helibase | | | Contact Air Ops on Command | | | | | | | |
| Evergreen Medivac (Type 2 Helicopter) | | Ft Greely, Delta Junction, AK | | | (907)353-9170 (907)356-5551 | | | X | X | | | |
| Guardian Flight (Fixed wing) | | Fairbanks | | | (907)356-5551 | | | | X | | | |
| 7. HOSPITALS | | | | | | | | | | | | |
| NAME | | ADDRESS | | | TRAVEL TIME | | PHONE | | HELIPAD | | BURN CTR | |
| | | | | | AIR | GRND | | | YES | NO | YES | NO |
| Fairbanks Memorial 64*49.90' x 147*44.50' | | 1650 Cowles Street, Fairbanks, AK 99701 | | | 30 min | 90 min | (907)458-5556 (907)353-9170 | | X | | | X |
| Anchorage-Providence Hosp 61*11.62' x 149*49.42' | | 3200 Providence Dr Anchorage, AK 99504 | | | 2 hrs | 6 hrs | (907)212-3111 | | X | | | X |
| Harborview Burn Center 47* 36.190 x 122*19.500 | | 325 9th Ave Seattle, WA 98104 | | | 4hrs | | (206) 284-2876 | | X | | X | |
| 8. MEDICAL EMERGENCY PROCEDURES | | | | | | | | | | | | |
| <p>In the event of a medical emergency follow the "First on Scene Protocols" listed on pg 2 of the daily incident medical plan.</p> <p>For Life-Threatening Emergencies, phone 911 then notify UYT Dispatch on Command 1 or 3 or phone at (907)356-5554.</p> <p>Resources should identify crew/unit EMS personnel and assigned line EMTs at beginning of shift.</p> | | | | | | | | | | | | |
| ICS 206 | | 9. PREPARED BY: (Safety Officer) Tim Benedict | | | | 10. REVIEWED BY: (IC) Randy Lenon | | | | | | |

First On Scene Protocols

IRPG Insert 2011

- Line supervisor (i.e. FFT1, CRWB, STLD, TFLD) notifies DIVS on **Command frequency** and states nature of illness/injury. Is it life threatening?

LIFE THREATENING = MEDIVAC

NON-LIFE THREATENING = MEDICAL TRANSPORT

- If life threatening request that the designated radio frequency be cleared for emergency traffic.
- Identify the on-scene point of contact (POC) by resource type and last name (i.e. POC is TFLD Smith).
- Identify the nature of the incident, number injured, patient assessments and location (geographic and GPS coordinates).
- Identify on-scene medical personnel by position and name (i.e. EMT Basic Smith)
- Identify preferred method of patient transport.
- Request any additional resources and/or equipment needed.
- Document all information received and transmitted on the radio and phone.
- Identify any changes in the on-scene POC or medical personnel as they occur.

Patient assessment & treatment

| | |
|---|---|
| PATIENT #1: <i>consciousness / unconsciousness</i> <i>Breathing rate: fast / slow</i> <i>Pulse rate</i> _____ Obvious Injury: <i>Cut / Bleeding</i> : <i>Heat</i> : <i>Fracture open / closed</i> : <i>Head injury</i> : <i>Bee sting allergic reaction</i> : <i>Eye injury</i> Burn location _____ Other info: _____ | |
| PATIENT #2: <i>consciousness / unconsciousness</i> <i>Breathing rate: fast / slow</i> <i>Pulse rate</i> _____ Obvious Injury: <i>Cut / Bleeding</i> : <i>Heat</i> : <i>Fracture open / closed</i> : <i>Head injury</i> : <i>Bee sting allergic reaction</i> : <i>Eye injury</i> Burn location _____ Other info: _____ | |
| PATIENT LOCATION / GPS: | LZ location / GPS: |
| On-scene Point of Contact POC: | Patient distance from LZ |
| On-scene Medical Personnel: | Operational Channel (should be Command Frequency): |
| Equipment Needed: Hoist : SKED : Backboard : Litter Rope : Trauma kit : Oxygen : IV fluids | LZ Hazards & Ground Contact |
| Mode of Patient Transport: AIR / GROUND | Patient Affiliation: Agency / contractor / military |