

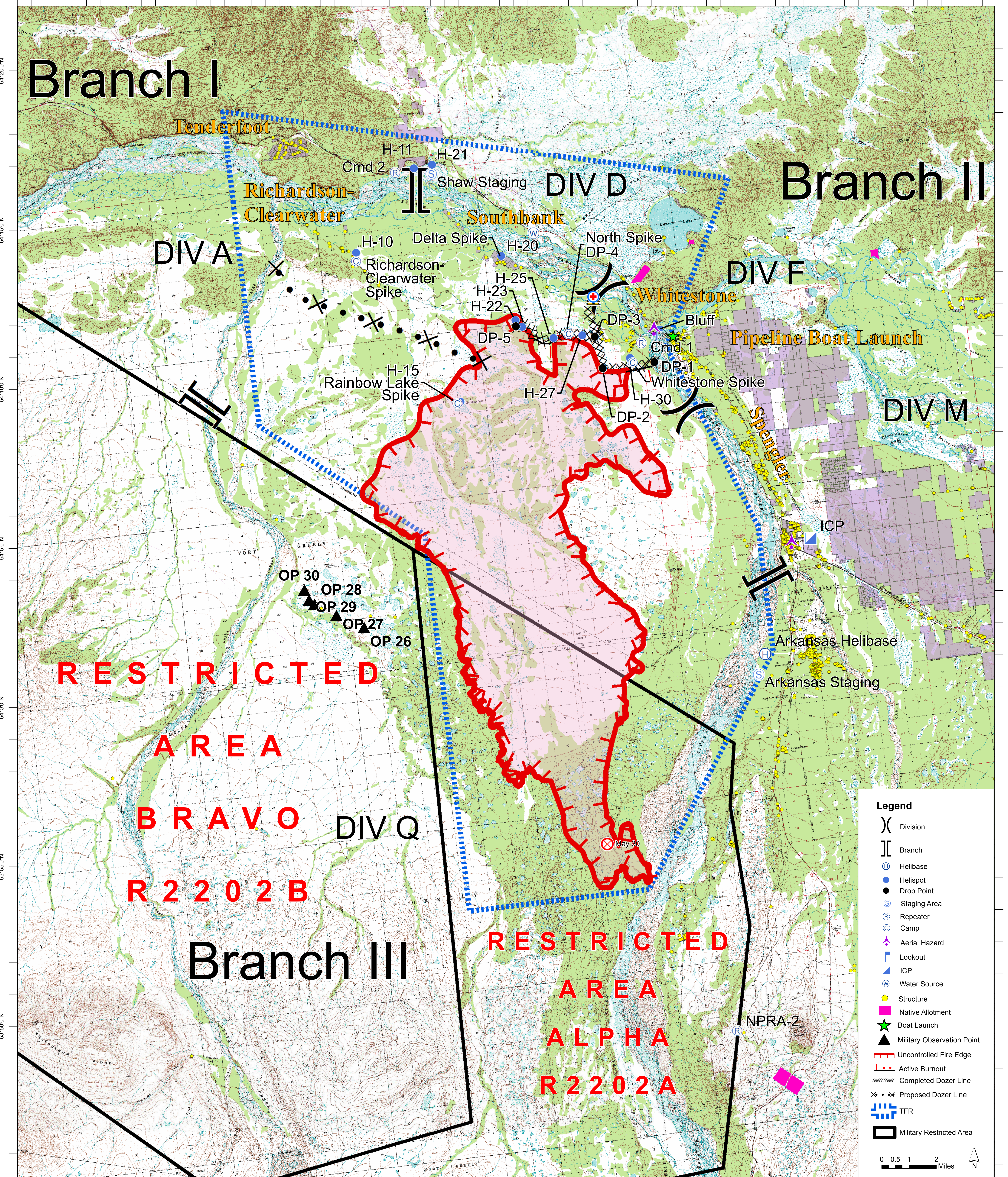
Mississippi Fire

AK-MID-117

Day Shift
August 17, 2013

64,601 Acres

146°35'0"W 146°30'0"W 146°25'0"W 146°20'0"W 146°15'0"W 146°10'0"W 146°5'0"W 146°0'0"W 145°55'0"W 145°50'0"W 145°45'0"W 145°40'0"W 145°35'0"W 145°30'0"W 145°25'0"W



Legend

- () Division
- [] Branch
- (H) Helibase
- (S) Helispot
- (D) Drop Point
- (S) Staging Area
- (R) Repeater
- (C) Camp
- (A) Aerial Hazard
- (L) Lookout
- (ICP) ICP
- (W) Water Source
- (Y) Structure
- (M) Native Allotment
- (S) Boat Launch
- (M) Military Observation Point
- (Red line) Uncontrolled Fire Edge
- (Red dashed line) Active Burnout
- (Black dashed line) Completed Dozer Line
- (Black dotted line) Proposed Dozer Line
- (Blue dashed line) TFR
- (Black box) Military Restricted Area

0 0.5 1 2 Miles

146°40'0"W 146°35'0"W 146°30'0"W 146°25'0"W 146°20'0"W 146°15'0"W 146°10'0"W 146°5'0"W 146°0'0"W 145°55'0"W 145°50'0"W 145°45'0"W 145°40'0"W 145°35'0"W 145°30'0"W 145°25'0"W

Branch I

Branch II

Tenderfoot

Richardson-Clearwater

Southbank

Whitestone

Pipeline Boat Launch

Spengler

RESTRICTED AREA

BRAVO

R2202B

Branch III

RESTRICTED AREA

ALPHA

R2202A

Cmd 2

Richardson-Clearwater Spike

Rainbow Lake Spike

Shaw Staging

Delta Spike

H-10 H-20 H-25 H-23 H-22

H-15 H-27

DIV D

North Spike DP-4

DP-5

H-27

DIV F

Bluff

Whitestone Spike

ICP

Arkansas Helibase

Arkansas Staging

DIV M

NPRA-2

May 30