

Mississippi Fire

AIR-OPS PILOT
AK-MID-117
67,182 Acres
Day Shift
August 21, 2013

Datum: NAD 83

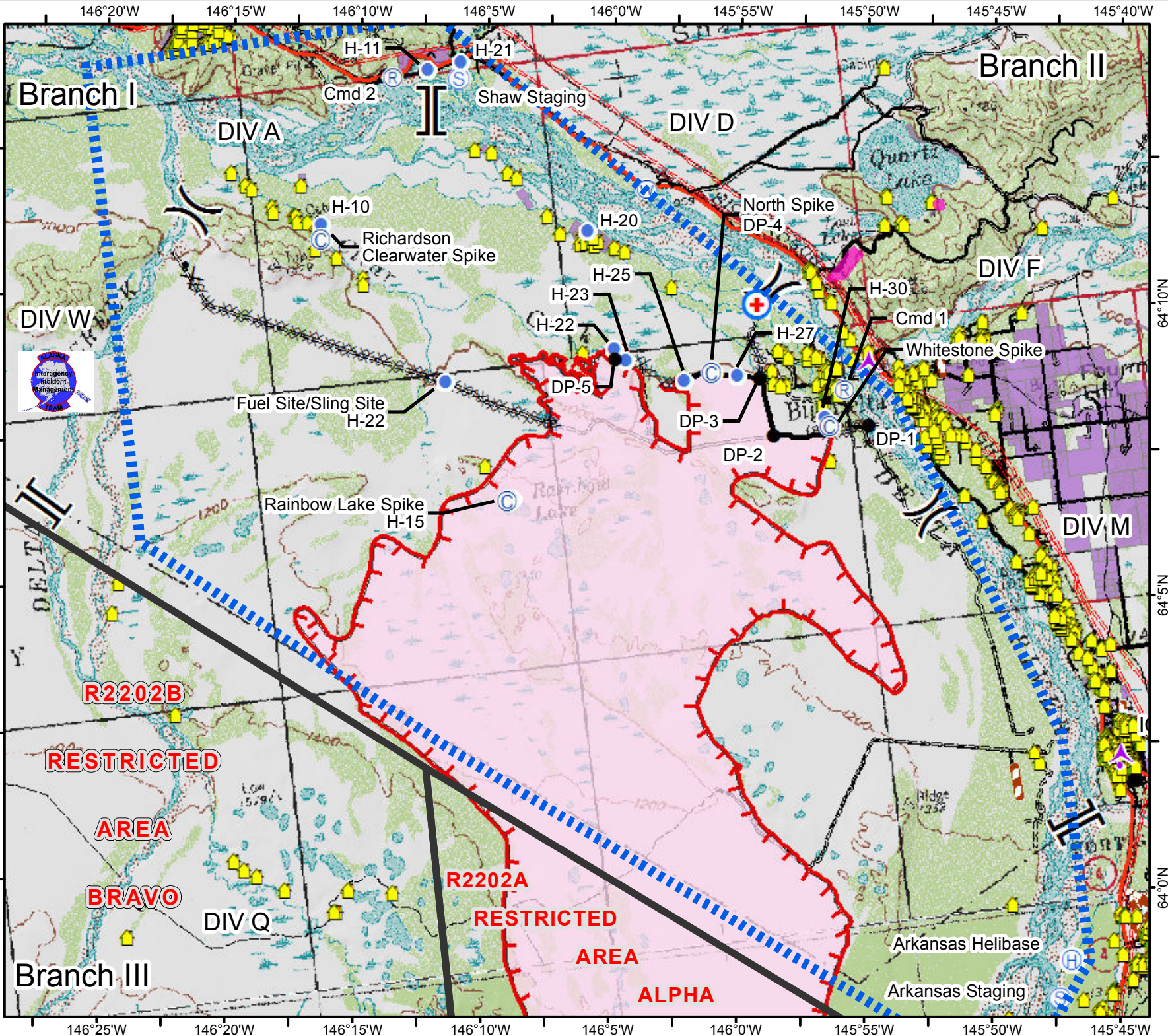
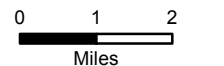
- Medivac Site
- Structures
- Aerial Hazard
- Helispot
- Drop Point
- Helibase
- Staging Area
- Water Source
- Camp
- Repeater

- Uncontrolled Fire Edge
- Active Burnout

- Proposed Dozer Line
- Completed Dozer Line

- TFR 3/9087 8/14/2013

- Restricted Area
- Land Disposal - Conveyed



Lat/Long for Spike Camps, Helispots, & other features

***Coordinates in Degrees, decimal minutes

***Set GPS for NAD83

Name	Latitude	Longitude	Notes
ICP	N 64°02.39500'	W 145°42.31500'	Incident Base – Delta Fairgrounds
Whitestone Airstrip	N 64°08.58300'	W 145°53.70600'	Fixed wing airstrip
Division Delta Airstrip	N 64°12.43500'	W 146°02.10000'	Grass airstrip/Spike Camp/Helispot (HEL2)
Arkansas Helibase	N 63°58.94300'	W 145°46.61400'	Incident Helibase
Arkansas Staging	N 63°58.31900'	W 145°47.25000'	Staging Area, Access from Richardson Hwy
Shaw Staging	N 64°15.28400'	W 146°06.41500'	Staging Area, Access from Richardson Hwy
Bluff Lookout	N 64°09.42200'	W 145°51.46600'	Access by trail on the North side of the Bridge.
DP-1	N 64°08.52700'	W 145°51.95700'	Along dozer line in Division F
DP-2	N 64°08.54800'	W 145°55.75200'	Along dozer line in Division F
DP-3	N 64°09.56200'	W 145°56.03200'	Along dozer line in Division F
DP-4	N 64°09.74600'	W 145°57.90500'	Along dozer line in Division F, Also North Spike
DP-5	N 64°10.18000'	W 146°01.63600'	Along dozer line in Division F, Also H-22

HELISPOTS

Name	Latitude	Longitude	Notes
H-10	N 64°13.08400'	W 146°12.54000'	Approved for HEL2
H-11	N 64°15.52200'	W 146°07.64500'	Shaw Creek 2, approved for HEL2
H-12	N 64°10.14300'	W 146°08.39500'	Along dozer line west of fire's edge
H-15	N 64°08.02000'	W 146°06.30000'	At Rainbow Lake Cabin, approved for HEL2
H-20	N 64°12.43500'	W 146°02.10000'	Approved for HEL2, co-located with Spike Camp
H-21	N 64°15.56900'	W 146°06.30600'	Shaw Creek 1
H-22	N 64°10.37000'	W 146°01.63000'	Approved for HEL2
H-23	N 64°10.14000'	W 146°01.21000'	Approved for HEL2
H-25	N 64°09.67000'	W 145°59.03000'	Approved for HEL2
H-27	N 64°09.64000'	W 145°56.93000'	Approved for HEL2
H-30	N 64°08.74700'	W 145°53.70600'	Approved for HEL2

REPEATERS

Name	Latitude	Longitude	Notes
Command Repeater 1	N 64°09.18000'	W 145°52.73300'	May be accessible by ATV. Located north of fire.
Command Repeater 2	N 64°15.45800'	W 146°09.02800'	Located along Richardson Hwy
Command Repeater NPRA-2	N 63°47.22000'	W 145°51.97100'	Located near Donnely Dome

SPIKE CAMPS

Name	Latitude	Longitude	Notes
Delta Spike (Southbank)	N 64°12.4350'	W 146°02.1000'	Spike Camp/Helispot approved for HEL2
Whitestone Spike	N 64°08.6000'	W 145°53.5300'	
Rainbow Lake Spike	N 64°07.9830'	W 146°06.5200'	Near Rainbow Lake Cabin. Helicopter access.
Richardson-Clear Spike	N 64°12.8180'	W 146°12.6070'	
North Spike	N 64°09.7400'	W 145°57.9050'	North end of fire, also DP-4