

143°50'0"W

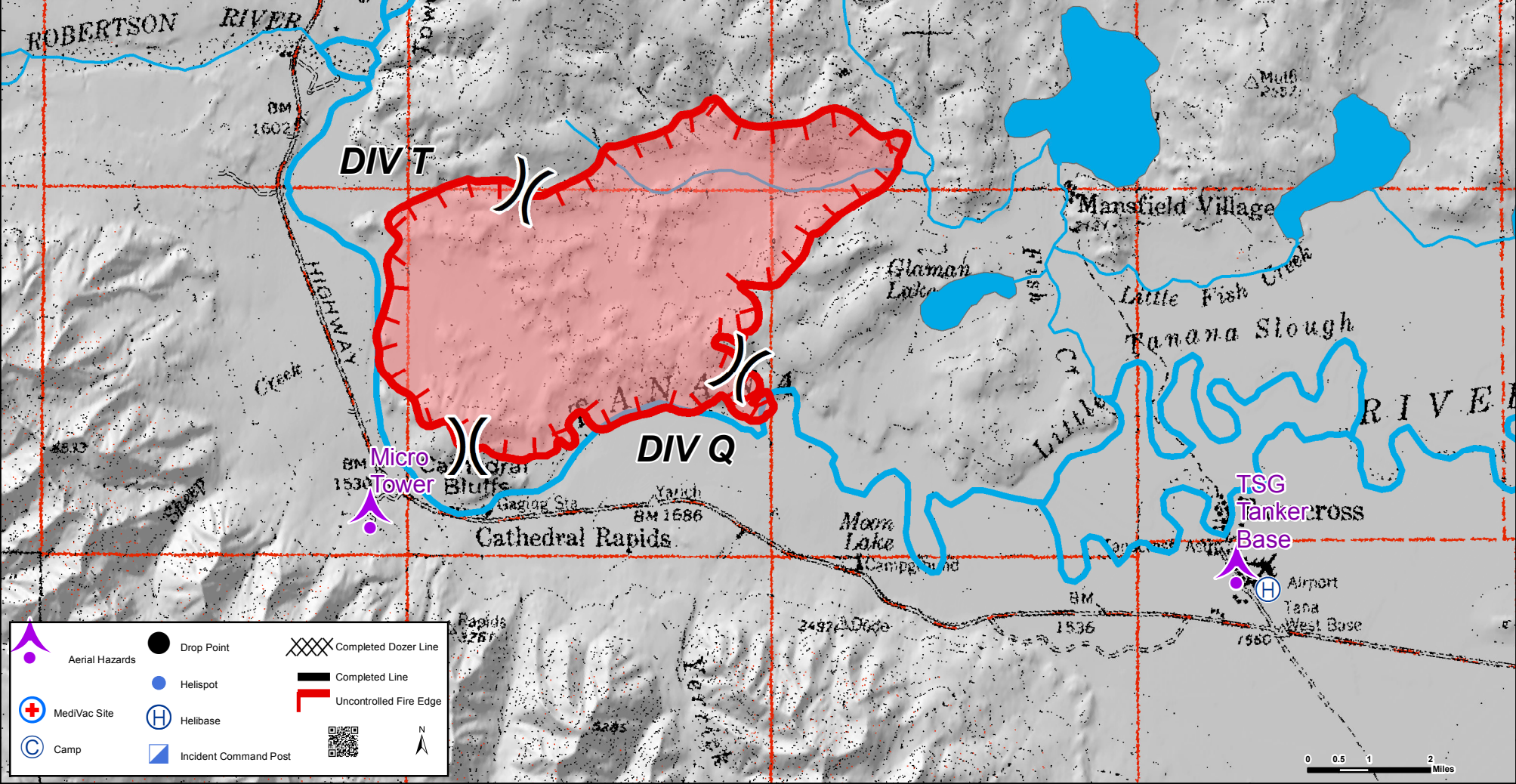
143°40'0"W

143°30'0"W

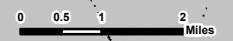
143°20'0"W

DP-1	N 63°16.250'	W 142°27.500'
DP-2	N 63°16.506'	W 142°27.138'
H-9	N 63°16.397'	W 142°26.278'
H-10	N 63°16.573'	W 142°29.919'
Medivac (Div Z)	N63°17.090'	W 142°27.800'
Elk Mtn Spike Camp	N 63°17.090'	W 142°27.800'
Div A Spike Camp	N 63°16.187'	W 142°24.581'
Tetlin Spike Camp	N 63°16.573'	W 142°29.919'
40 Mile Helibase	N 63°19.706'	W 142°57.361'
Tok Forestry Helibase	N 63°19.636'	W 142°59.918'
Tanacross Helibase	N 63°22.139'	W 143°19.440'
Sling A1	N 63°16.069'	W 142°24.781'
Sling A2	N 63°16.055'	W 142°24.972'
Sling Z4	N 63°16.978'	W 142°27.702'
Sling Z5	N 63°17.336'	W 142°27.920'

Aerial Operations 401 - Moon Lake July 5, 2013



	Aerial Hazards		Drop Point		Completed Dozer Line
	MediVac Site		Helispot		Completed Line
	Camp		Incident Command Post		Uncontrolled Fire Edge



143°50'0"W

143°40'0"W

143°30'0"W

143°20'0"W

63°30'0"N

63°30'0"N

63°20'0"N

63°20'0"N