

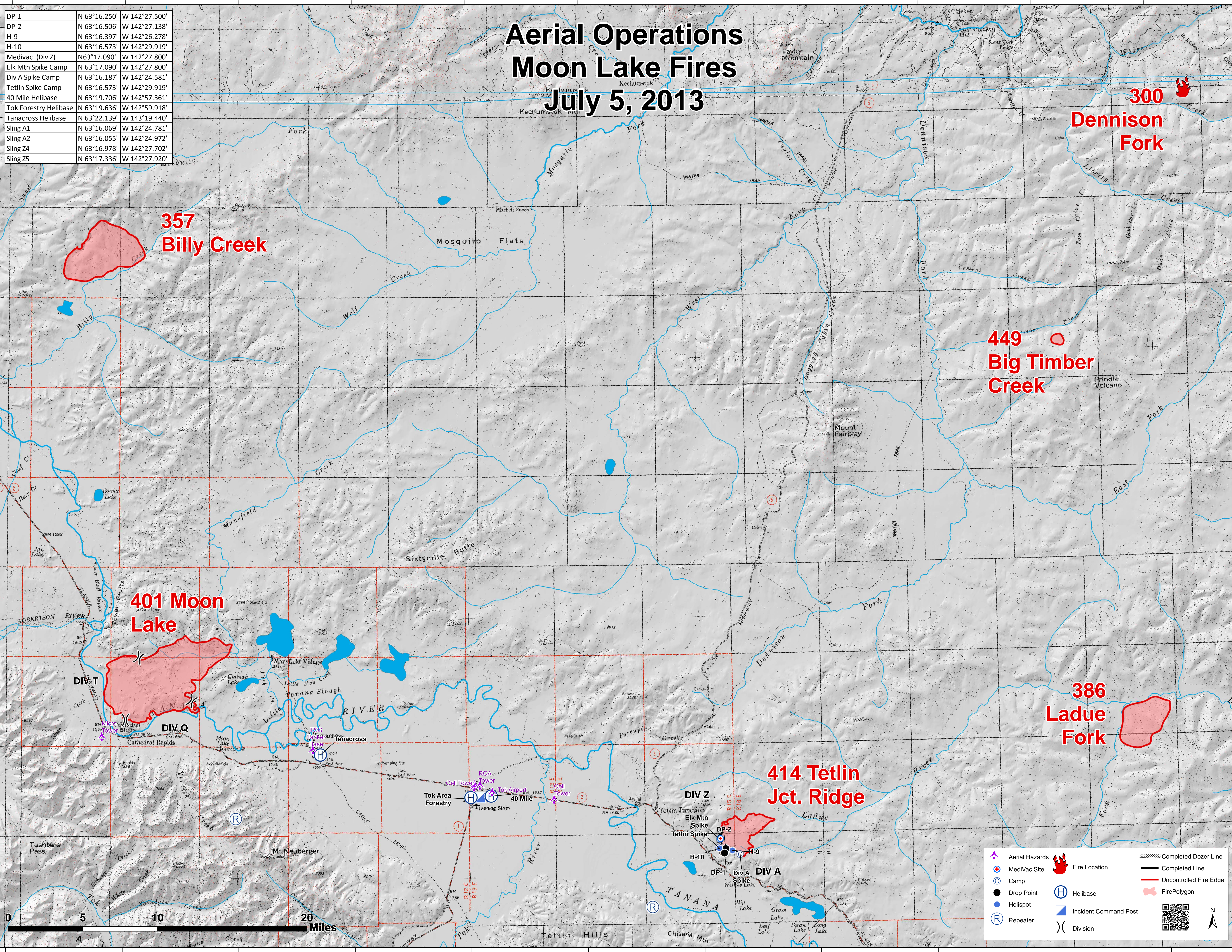
144°0'0"W 143°45'0"W 143°30'0"W 143°15'0"W 143°0'0"W 142°45'0"W 142°30'0"W 142°15'0"W 142°0'0"W 141°45'0"W 141°30'0"W

Aerial Operations Moon Lake Fires July 5, 2013

DP-1	N 63°16.250'	W 142°27.500'
DP-2	N 63°16.506'	W 142°27.138'
H-9	N 63°16.397'	W 142°26.278'
H-10	N 63°16.573'	W 142°29.919'
Medivac (Div Z)	N63°17.090'	W 142°27.800'
Elk Mtn Spike Camp	N 63°17.090'	W 142°27.800'
Div A Spike Camp	N 63°16.187'	W 142°24.581'
Tetlin Spike Camp	N 63°16.573'	W 142°29.919'
40 Mile Helibase	N 63°19.706'	W 142°57.361'
Tok Forestry Helibase	N 63°19.636'	W 142°59.918'
Tanacross Helibase	N 63°22.139'	W 143°19.440'
Sling A1	N 63°16.069'	W 142°24.781'
Sling A2	N 63°16.055'	W 142°24.972'
Sling Z4	N 63°16.978'	W 142°27.702'
Sling Z5	N 63°17.336'	W 142°27.920'

64°0'0"N
63°45'0"N
63°30'0"N
63°15'0"N

64°0'0"N
63°45'0"N
63°30'0"N
63°15'0"N



**357
Billy Creek**

**401 Moon
Lake**

**414 Tetlin
Jct. Ridge**

**386
Ladue
Fork**

**300
Dennison
Fork**

**449
Big Timber
Creek**

	Aerial Hazards		Fire Location		Completed Dozer Line
	MediVac Site		Uncontrolled Fire Edge		Completed Line
	Camp		Helibase		Incident Command Post
	Drop Point		Repeater		Division
	Helispot				



144°0'0"W 143°45'0"W 143°30'0"W 143°15'0"W 143°0'0"W 142°45'0"W 142°30'0"W 142°15'0"W 142°0'0"W 141°45'0"W 141°30'0"W