

143°50'0"W

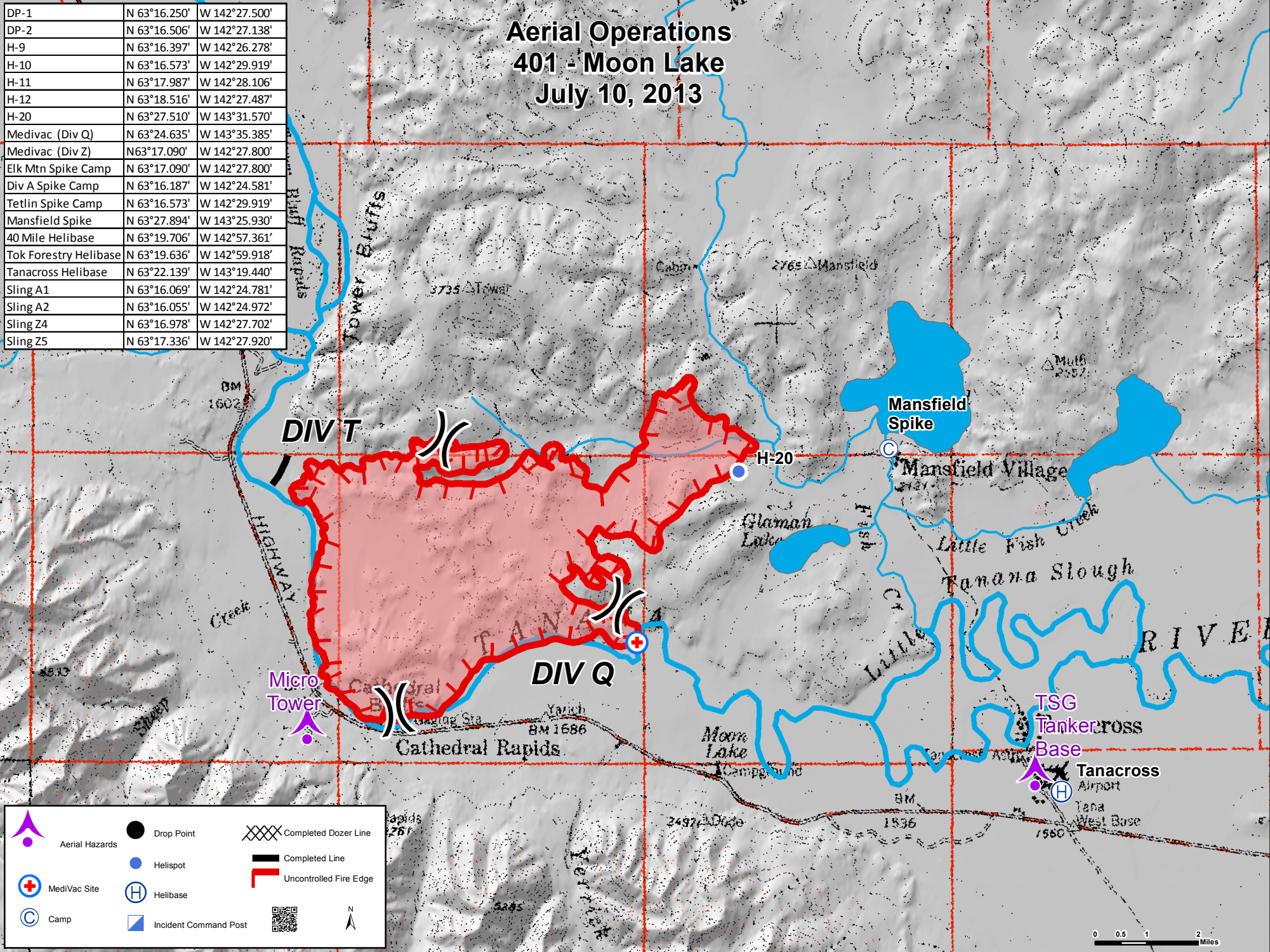
143°40'0"W

143°30'0"W

143°20'0"W

Aerial Operations 401 - Moon Lake July 10, 2013

DP-1	N 63°16.250'	W 142°27.500'
DP-2	N 63°16.506'	W 142°27.138'
H-9	N 63°16.397'	W 142°26.278'
H-10	N 63°16.573'	W 142°29.919'
H-11	N 63°17.987'	W 142°28.106'
H-12	N 63°18.516'	W 142°27.487'
H-20	N 63°27.510'	W 143°31.570'
Medivac (Div Q)	N 63°24.635'	W 143°35.385'
Medivac (Div Z)	N 63°17.090'	W 142°27.800'
Elk Mtn Spike Camp	N 63°17.090'	W 142°27.800'
Div A Spike Camp	N 63°16.187'	W 142°24.581'
Tetlin Spike Camp	N 63°16.573'	W 142°29.919'
Mansfield Spike	N 63°27.894'	W 143°25.930'
40 Mile Helibase	N 63°19.706'	W 142°57.361'
Tok Forestry Helibase	N 63°19.636'	W 142°59.918'
Tanacross Helibase	N 63°22.139'	W 143°19.440'
Sling A1	N 63°16.069'	W 142°24.781'
Sling A2	N 63°16.055'	W 142°24.972'
Sling Z4	N 63°16.978'	W 142°27.702'
Sling Z5	N 63°17.336'	W 142°27.920'



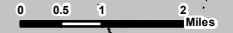
Aerial Hazards	Drop Point	Completed Dozer Line
MediVac Site	Helispot	Completed Line
Camp	Helibase	Uncontrolled Fire Edge
	Incident Command Post	N

143°50'0"W

143°40'0"W

143°30'0"W

143°20'0"W



63°30'0"N

63°30'0"N

63°20'0"N

63°20'0"N