

144°0'0"W 143°45'0"W 143°30'0"W 143°15'0"W 143°0'0"W 142°45'0"W 142°30'0"W 142°15'0"W 142°0'0"W 141°45'0"W 141°30'0"W

Aerial Operations Moon Lake Fires July 11, 2013

64°0'0"N

64°0'0"N

63°45'0"N

63°45'0"N

63°30'0"N

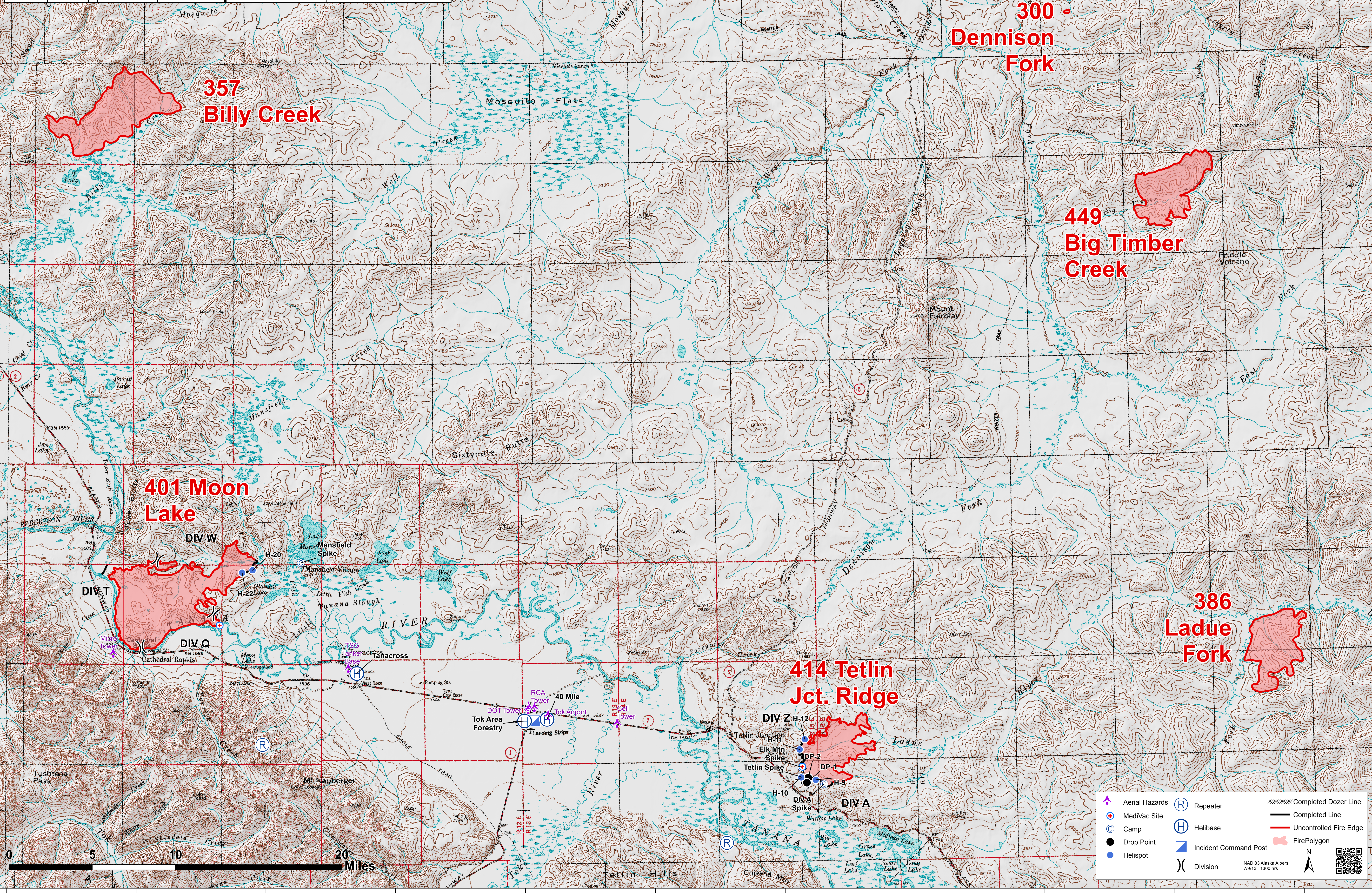
63°30'0"N

63°15'0"N

63°15'0"N

144°0'0"W 143°45'0"W 143°30'0"W 143°15'0"W 143°0'0"W 142°45'0"W 142°30'0"W 142°15'0"W 142°0'0"W 141°45'0"W 141°30'0"W

DP-1	N 63°16.250'	W 142°27.500'	Div A Spike Camp	N 63°16.187'	W 142°24.581'
DP-2	N 63°16.506'	W 142°27.138'	Tetlin Spike Camp	N 63°16.573'	W 142°29.919'
H-9	N 63°16.397'	W 142°26.278'	Mansfield Spike	N 63°27.894'	W 143°25.930'
H-10	N 63°16.573'	W 142°29.919'	40 Mile Helibase	N 63°19.706'	W 142°57.361'
H-11	N 63°17.987'	W 142°28.106'	Tok Forestry Helibase	N 63°19.636'	W 142°59.918'
H-12	N 63°18.516'	W 142°27.487'	Tanacross Helibase	N 63°22.139'	W 143°19.440'
H-20	N 63°27.510'	W 143°31.570'	Sling A1	N 63°16.069'	W 142°24.781'
H-22	N 63°27.380'	W 143°32.777'	Sling A2	N 63°16.055'	W 142°24.972'
Medivac (Div Q)	N 63°24.635'	W 143°35.385'	Sling Z4	N 63°16.978'	W 142°27.702'
Medivac (Div Z)	N 63°17.090'	W 142°27.800'	Sling Z5	N 63°17.336'	W 142°27.920'
Elk Mtn Spike Camp	N 63°17.090'	W 142°27.800'			



NAD 83 Alaska Albers
7/9/13 1300 hrs