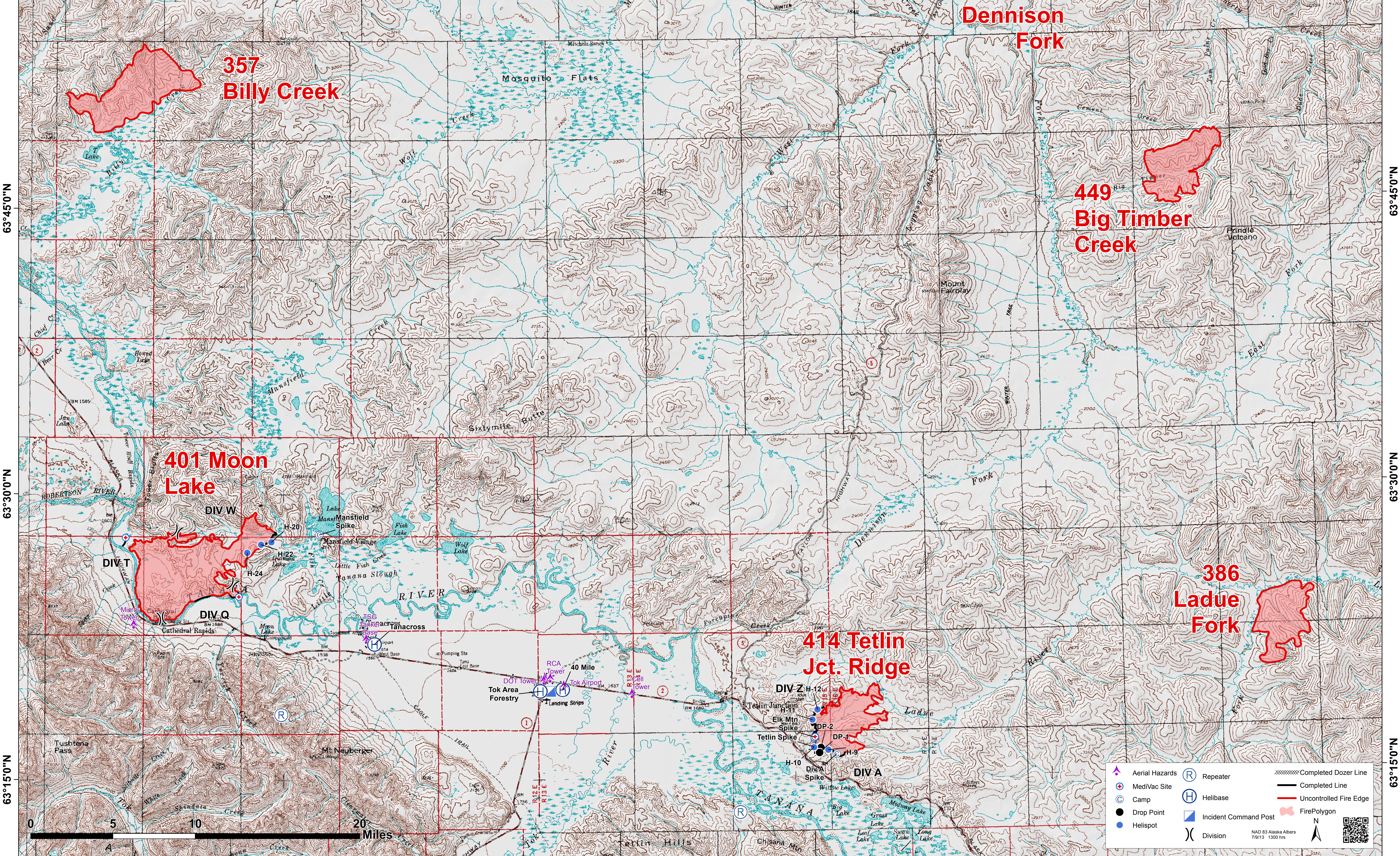


144°0'0"W 143°45'0"W 143°30'0"W 143°15'0"W 143°0'0"W 142°45'0"W 142°30'0"W 142°15'0"W 142°0'0"W 141°45'0"W 141°30'0"W

Aerial Operations Moon Lake Fires July 12, 2013

DP-1	N 63°16.250' W 142°27.500'	Elk Mtn Spike Camp	N 63°17.090' W 142°27.800'
DP-2	N 63°16.506' W 142°27.138'	Div A Spike Camp	N 63°16.187' W 142°24.581'
H-9	N 63°16.397' W 142°26.278'	Tetlin Spike Camp	N 63°16.573' W 142°29.919'
H-10	N 63°16.573' W 142°29.919'	Mansfield Spike	N 63°27.894' W 143°25.930'
H-11	N 63°17.987' W 142°28.106'	40 Mile Helibase	N 63°19.706' W 142°57.361'
H-12	N 63°18.516' W 142°27.487'	Tok Forestry Helibase	N 63°19.636' W 142°59.918'
H-20	N 63°27.510' W 143°31.570'	Tanacross Helibase	N 63°22.139' W 143°19.440'
H-22	N 63°27.380' W 143°32.777'	Sling A1	N 63°16.069' W 142°24.781'
H-24	N 63°26.950' W 143°34.410'	Sling A2	N 63°16.055' W 142°24.972'
Medivac (Div Q)	N 63°24.635' W 143°35.385'	Sling Z4	N 63°16.978' W 142°27.702'
Medivac (Div T)	N 63°27.735' W 143°48.745'	Sling Z5	N 63°17.336' W 142°27.920'
Medivac (Div Z)	N 63°17.090' W 142°27.800'		



144°0'0"W 143°45'0"W 143°30'0"W 143°15'0"W 143°0'0"W 142°45'0"W 142°30'0"W 142°15'0"W 142°0'0"W 141°45'0"W 141°30'0"W