

142°30'0"W

142°25'0"W

142°20'0"W

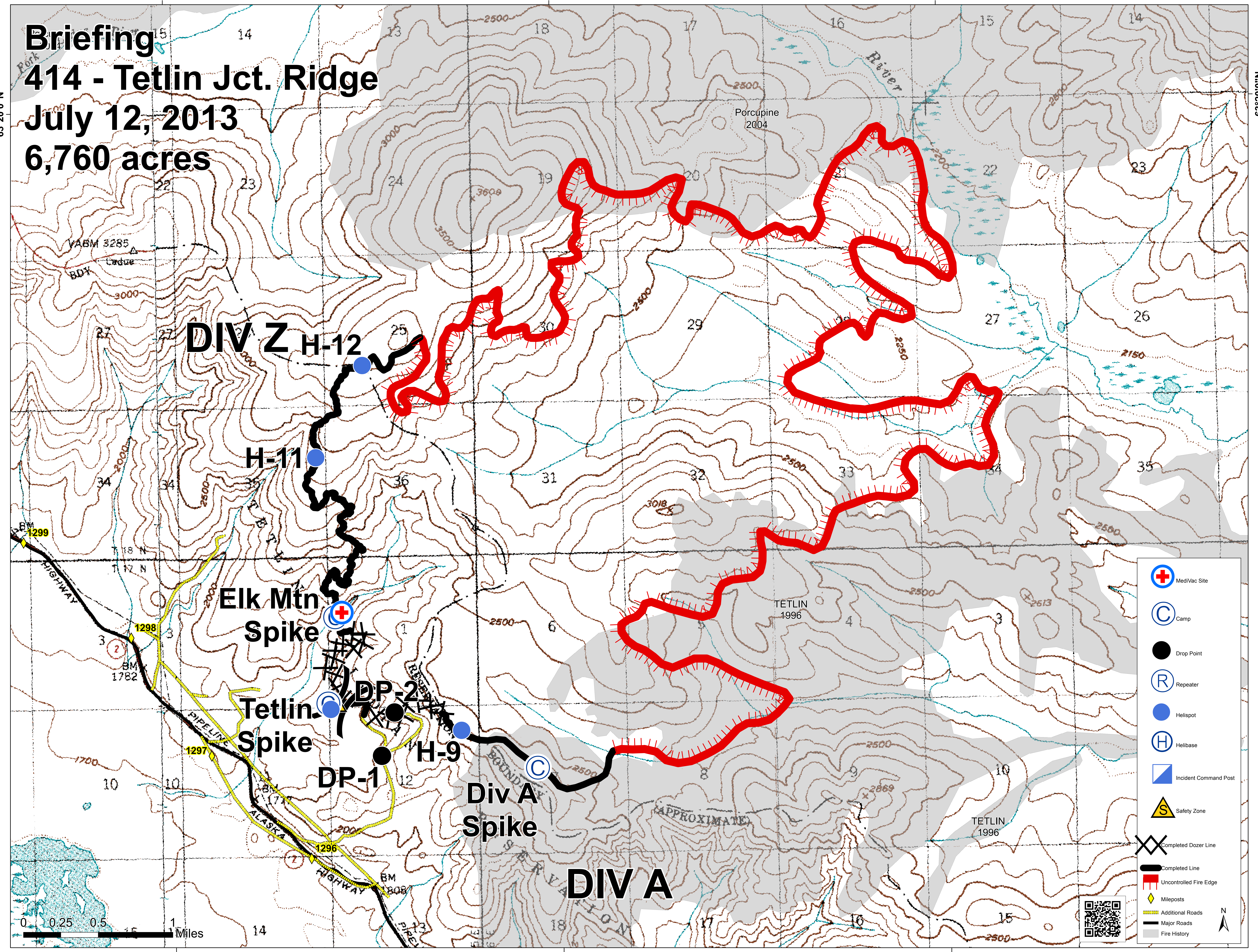
Briefing 414 - Tetlin Jct. Ridge

July 12, 2013

6,760 acres

63°20'0"N

63°20'0"N



DIV Z

H-12

H-11

Elk Mtn Spike

Tetlin Spike

DP-2

DP-1

H-9

Div A Spike

DIV A

- MediVac Site
- Camp
- Drop Point
- Repeater
- Helispot
- Helibase
- Incident Command Post
- Safety Zone
- Completed Dozer Line
- Completed Line
- Uncontrolled Fire Edge
- Mileposts
- Additional Roads
- Major Roads
- Fire History

142°30'0"W

142°25'0"W

142°20'0"W