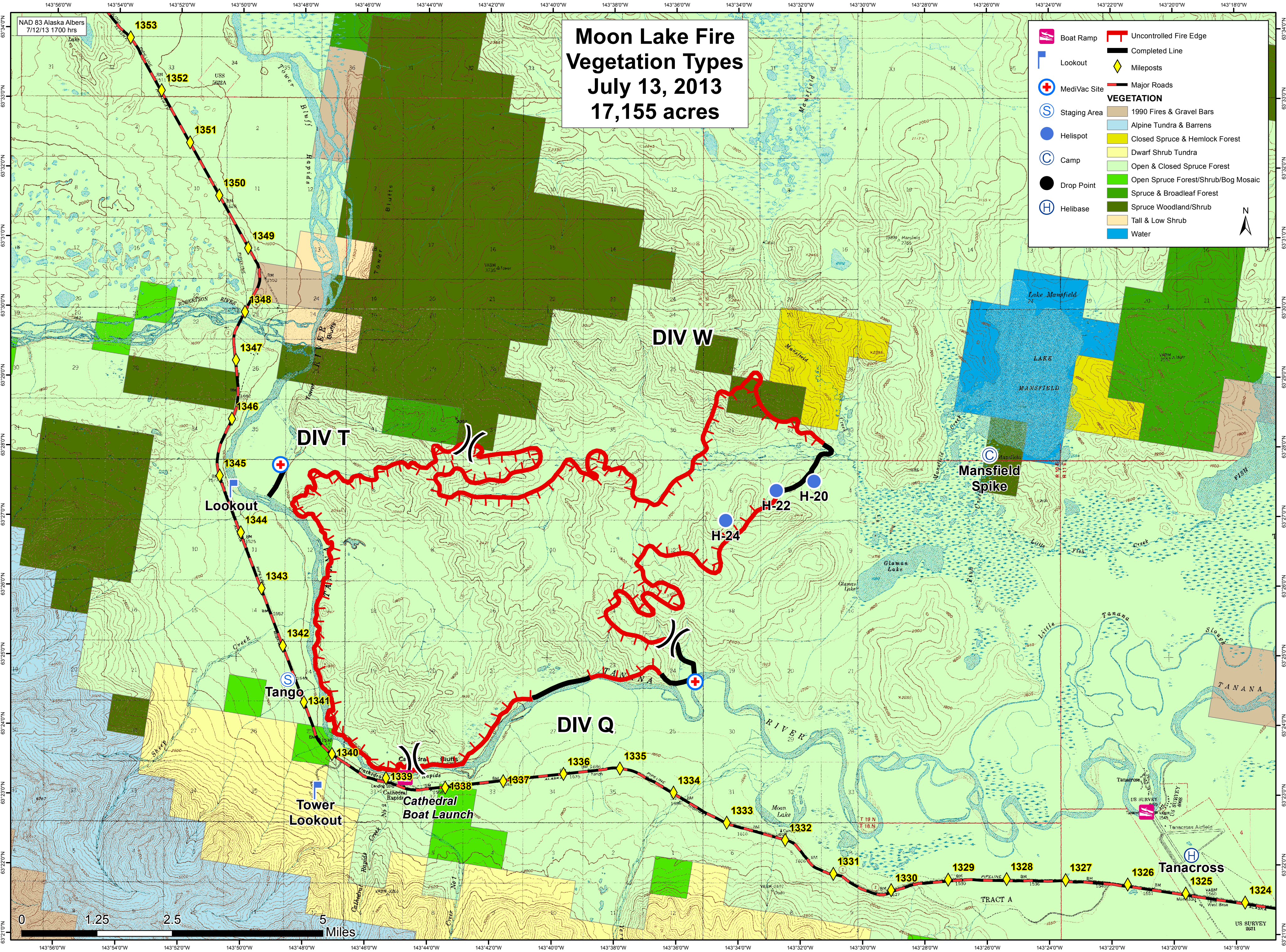


Moon Lake Fire Vegetation Types July 13, 2013 17,155 acres

	Boat Ramp		Uncontrolled Fire Edge
	Lookout		Completed Line
	MediVac Site		Mileposts
	Staging Area		Major Roads
	Helispot	VEGETATION	
	Camp		1990 Fires & Gravel Bars
	Drop Point		Alpine Tundra & Barrens
	Helibase		Closed Spruce & Hemlock Forest
			Dwarf Shrub Tundra
			Open & Closed Spruce Forest
			Open Spruce Forest/Shrub/Bog Mosaic
			Spruce & Broadleaf Forest
			Spruce Woodland/Shrub
			Tall & Low Shrub
			Water



0 1.25 2.5 5 Miles

NAD 83 Alaska Albers
7/12/13 1700 hrs

1353, 1352, 1351, 1350, 1349, 1348, 1347, 1346, 1345, 1344, 1343, 1342, 1341, 1340, 1339, 1338, 1337, 1336, 1335, 1334, 1333, 1332, 1331, 1330, 1329, 1328, 1327, 1326, 1325, 1324

Lookout, Tango, Tower Lookout, Cathedral Boat Launch, Mansfield Spike, H-22, H-20, H-24

DIV Q, DIV T, DIV W

Lake Mansfield, Mansfield Lake, Tanana Lake, Moon Lake, Tanana River, Tanacross Airfield