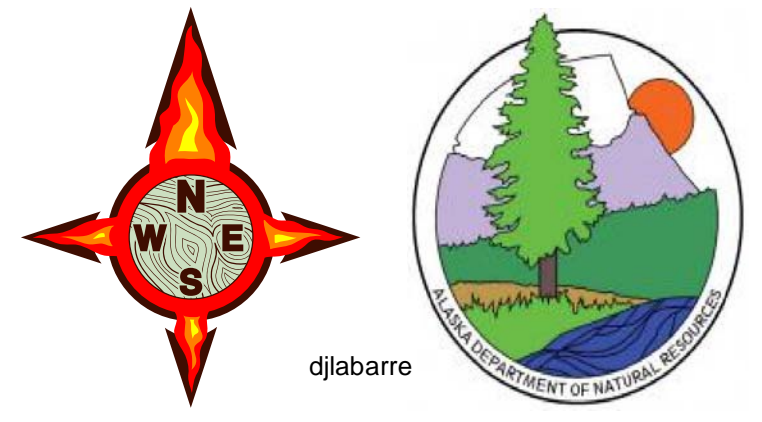


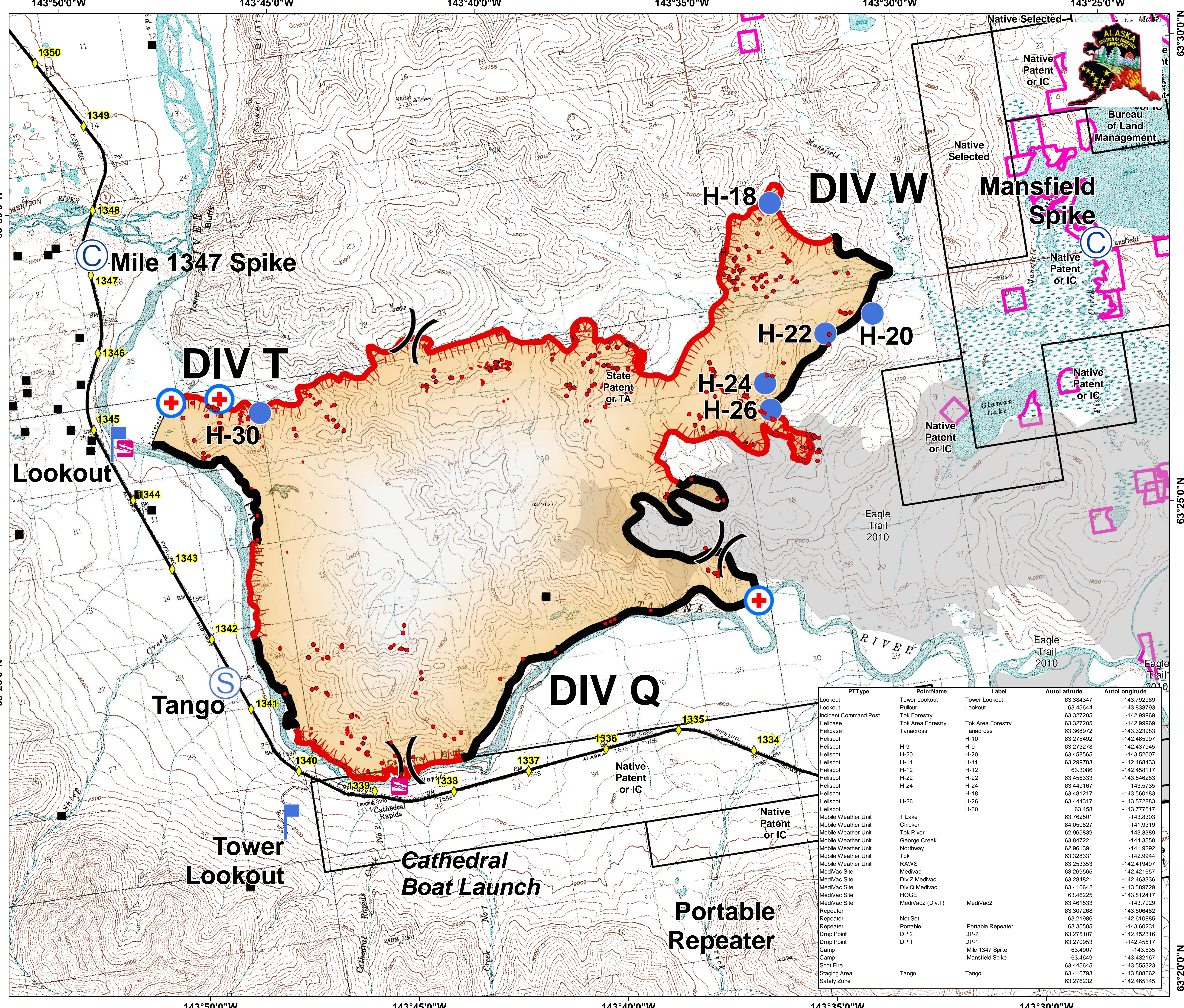
**Operations
Fire 401
Moon Lake
08/01/2013
18050 Acres**

NAD 83 Alaska Albers
07/30/13 800hrs

- Isolated Heat
- ⊕ Scattered Heat
- ⊕ Intense Heat
- ▭ Boat Ramp
- ▭ Lookout
- Helispot
- ⊕ Camp
- ⊕ MediVac Site
- ⊕ Staging Area
- Completed Line
- Completed Burnout
- Uncontrolled Fire Edge
- Known Sites
- ▭ Fire Polygon
- ▭ Ownership
- ◆ Mileposts
- Major Roads
- Fire History
- ▭ Allotments



0 0.5 1 Miles



PTType	PointName	Label	AutoLatitude	AutoLongitude
Lookout	Tower Lookout	Tower Lookout	63.384347	-143.792969
Lookout	Lookout	Lookout	63.45644	-143.838793
Incident Command Post	Tok Forestry	Lookout	63.327205	-142.996969
Helibase	Tok Area Forestry	Tok Area Forestry	63.327205	-142.996969
Helibase	Tanacross	Tanacross	63.368972	-143.323983
Helispot	H-10	H-10	63.275492	-142.465997
Helispot	H-9	H-9	63.273278	-142.437945
Helispot	H-20	H-20	63.458565	-143.526007
Helispot	H-11	H-11	63.299783	-142.468433
Helispot	H-12	H-12	63.3086	-142.458117
Helispot	H-22	H-22	63.456333	-143.546283
Helispot	H-24	H-24	63.449167	-143.5735
Helispot	H-18	H-18	63.481217	-143.560183
Helispot	H-26	H-26	63.444317	-143.572883
Helispot	H-30	H-30	63.458	-143.777517
Mobile Weather Unit	T Lake	T Lake	63.762501	-143.8303
Mobile Weather Unit	Chicken	Chicken	64.050827	-141.9319
Mobile Weather Unit	Tok River	Tok River	62.965839	-143.3389
Mobile Weather Unit	George Creek	George Creek	63.847221	-144.3558
Mobile Weather Unit	Northway	Northway	62.961391	-141.9292
Mobile Weather Unit	Tok	Tok	63.328331	-142.9944
Mobile Weather Unit	RAWS	RAWS	63.253353	-142.419497
MediVac Site	MediVac	MediVac	63.269565	-142.421657
MediVac Site	Div Z MediVac	Div Z MediVac	63.284821	-142.463336
MediVac Site	Div Q MediVac	Div Q MediVac	63.410642	-143.589729
MediVac Site	HOGE	HOGE	63.46225	-143.812417
MediVac Site	MediVac2 (Div.T)	MediVac2	63.461533	-143.7929
Repeater	Not Set	Not Set	63.307268	-143.506482
Repeater	DP 2	DP-2	63.21986	-142.610885
Repeater	DP 1	Portable Repeater	63.35585	-143.60231
Drop Point	DP 2	DP-2	63.275107	-142.452316
Drop Point	DP 1	DP-1	63.270953	-142.45517
Camp	Mile 1347 Spike	Mile 1347 Spike	63.4907	-143.835
Camp	Mansfield Spike	Mansfield Spike	63.4649	-143.432167
Spot Fire	Mansfield Spike	Mansfield Spike	63.445645	-143.553223
Staging Area	Tango	Tango	63.410793	-143.808062
Safety Zone	Tango	Tango	63.276232	-142.465145