

152°24'0"W 152°22'0"W 152°20'0"W 152°18'0"W 152°16'0"W 152°14'0"W 152°12'0"W 152°10'0"W 152°8'0"W 152°6'0"W

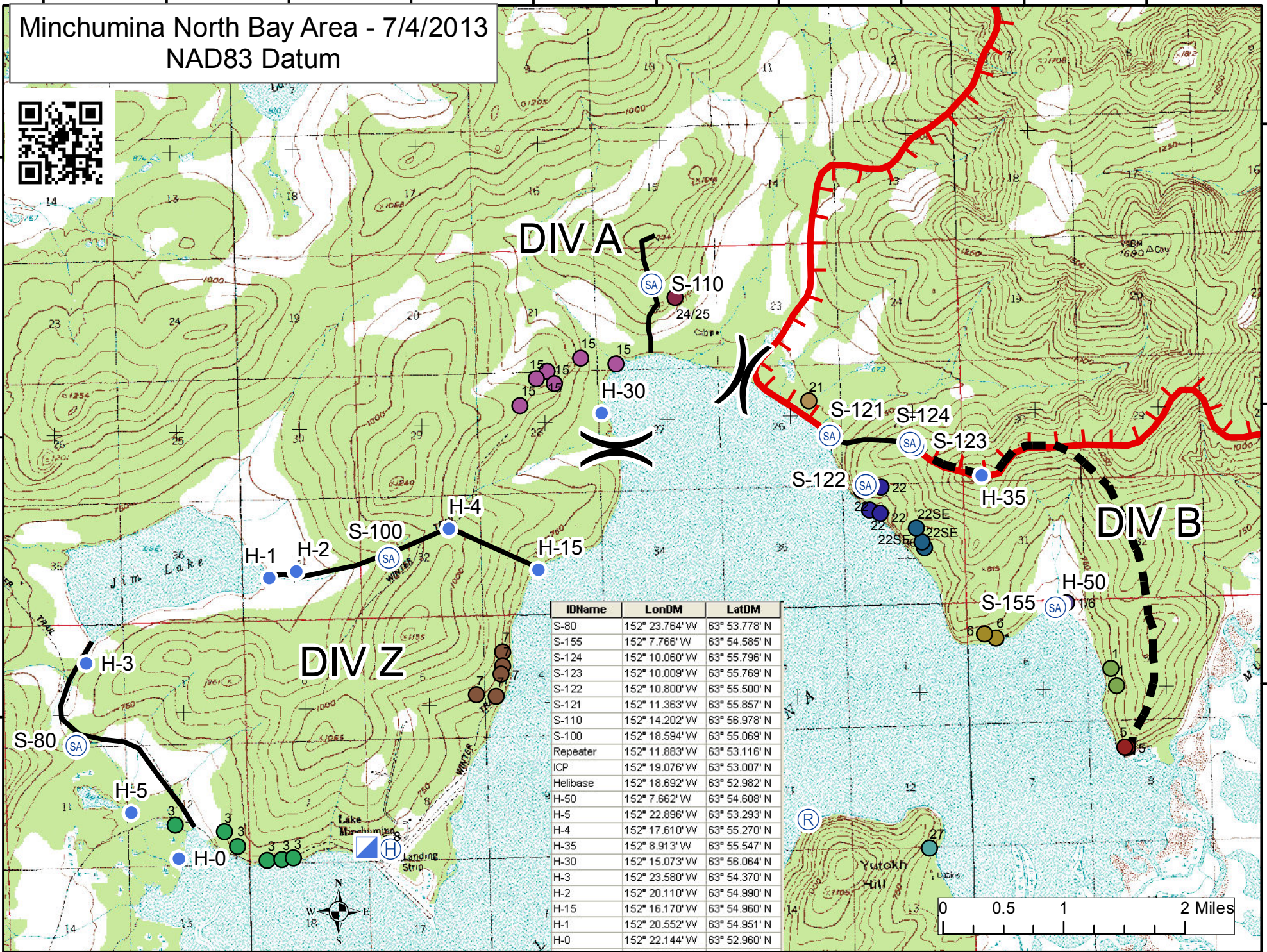
# Minchumina North Bay Area - 7/4/2013

## NAD83 Datum



63°58'0"N  
63°56'0"N  
63°54'0"N

63°58'0"N  
63°56'0"N  
63°54'0"N



| IDName   | LonDM          | LatDM         |
|----------|----------------|---------------|
| S-80     | 152° 23.764' W | 63° 53.778' N |
| S-155    | 152° 7.766' W  | 63° 54.585' N |
| S-124    | 152° 10.060' W | 63° 55.798' N |
| S-123    | 152° 10.009' W | 63° 55.769' N |
| S-122    | 152° 10.800' W | 63° 55.500' N |
| S-121    | 152° 11.363' W | 63° 55.857' N |
| S-110    | 152° 14.202' W | 63° 56.978' N |
| S-100    | 152° 18.594' W | 63° 55.069' N |
| Repeater | 152° 11.883' W | 63° 53.116' N |
| ICP      | 152° 19.076' W | 63° 53.007' N |
| Helibase | 152° 18.692' W | 63° 52.982' N |
| H-50     | 152° 7.662' W  | 63° 54.608' N |
| H-5      | 152° 22.896' W | 63° 53.293' N |
| H-4      | 152° 17.610' W | 63° 55.270' N |
| H-35     | 152° 8.913' W  | 63° 55.547' N |
| H-30     | 152° 15.073' W | 63° 56.064' N |
| H-3      | 152° 23.580' W | 63° 54.370' N |
| H-2      | 152° 20.110' W | 63° 54.990' N |
| H-15     | 152° 16.170' W | 63° 54.960' N |
| H-1      | 152° 20.552' W | 63° 54.951' N |
| H-0      | 152° 22.144' W | 63° 52.960' N |



152°24'0"W 152°22'0"W 152°20'0"W 152°18'0"W 152°16'0"W 152°14'0"W 152°12'0"W 152°10'0"W 152°8'0"W 152°6'0"W