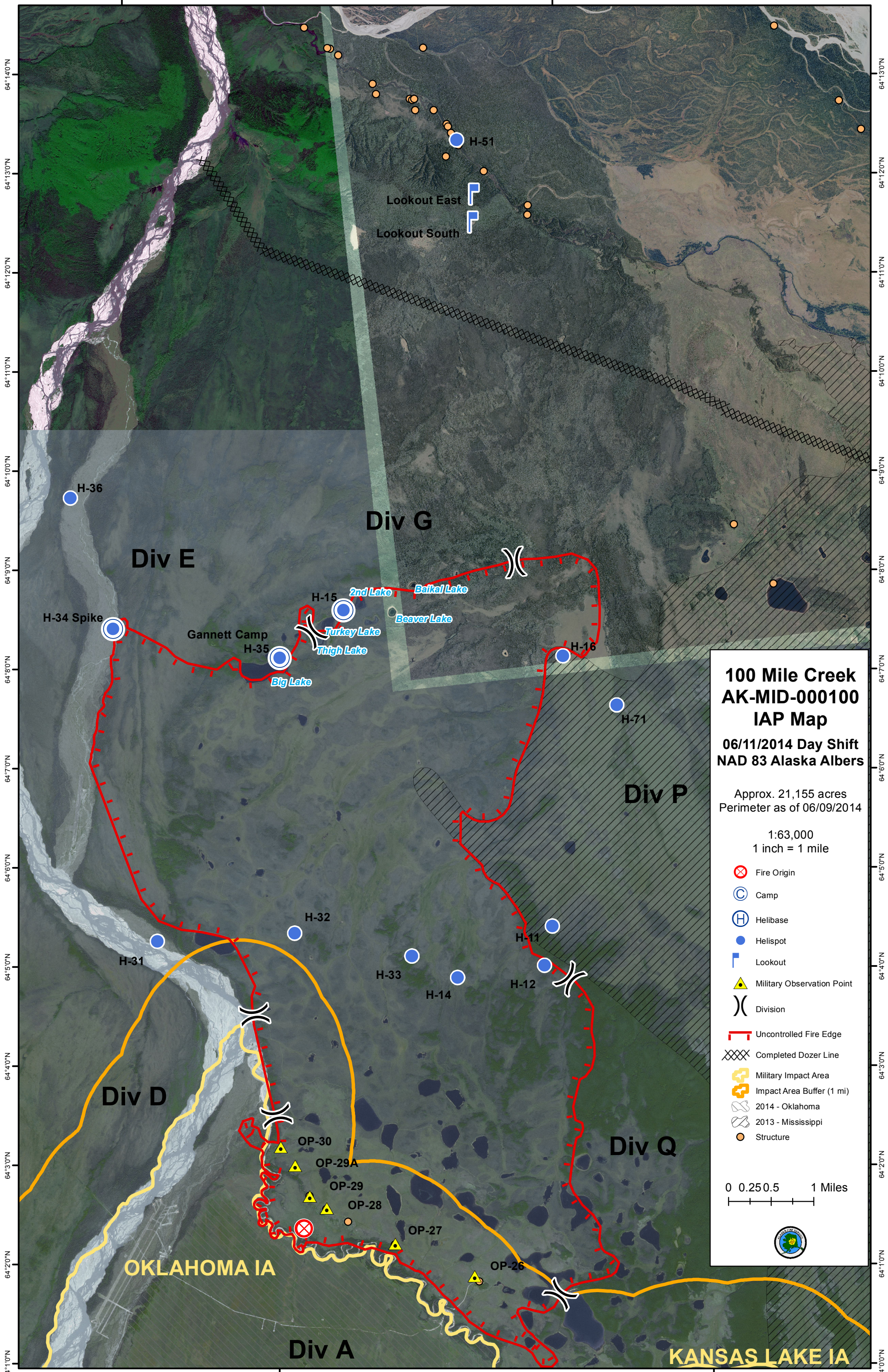


146°20'0"W

146°10'0"W



**100 Mile Creek  
AK-MID-000100  
IAP Map**

**06/11/2014 Day Shift  
NAD 83 Alaska Albers**

Approx. 21,155 acres  
Perimeter as of 06/09/2014

1:63,000  
1 inch = 1 mile

- Fire Origin
- Camp
- Helibase
- Helispot
- Lookout
- Military Observation Point
- Division
- Uncontrolled Fire Edge
- Completed Dozer Line
- Military Impact Area
- Impact Area Buffer (1 mi)
- 2014 - Oklahoma
- 2013 - Mississippi
- Structure

0 0.25 0.5 1 Miles



**OKLAHOMA IA**

**KANSAS LAKE IA**

64°14'0"N  
64°13'0"N  
64°12'0"N  
64°11'0"N  
64°10'0"N  
64°9'0"N  
64°8'0"N  
64°7'0"N  
64°6'0"N  
64°5'0"N  
64°4'0"N  
64°3'0"N  
64°2'0"N  
64°1'0"N

64°13'0"N  
64°12'0"N  
64°11'0"N  
64°10'0"N  
64°9'0"N  
64°8'0"N  
64°7'0"N  
64°6'0"N  
64°5'0"N  
64°4'0"N  
64°3'0"N  
64°2'0"N  
64°1'0"N

146°20'0"W

146°10'0"W