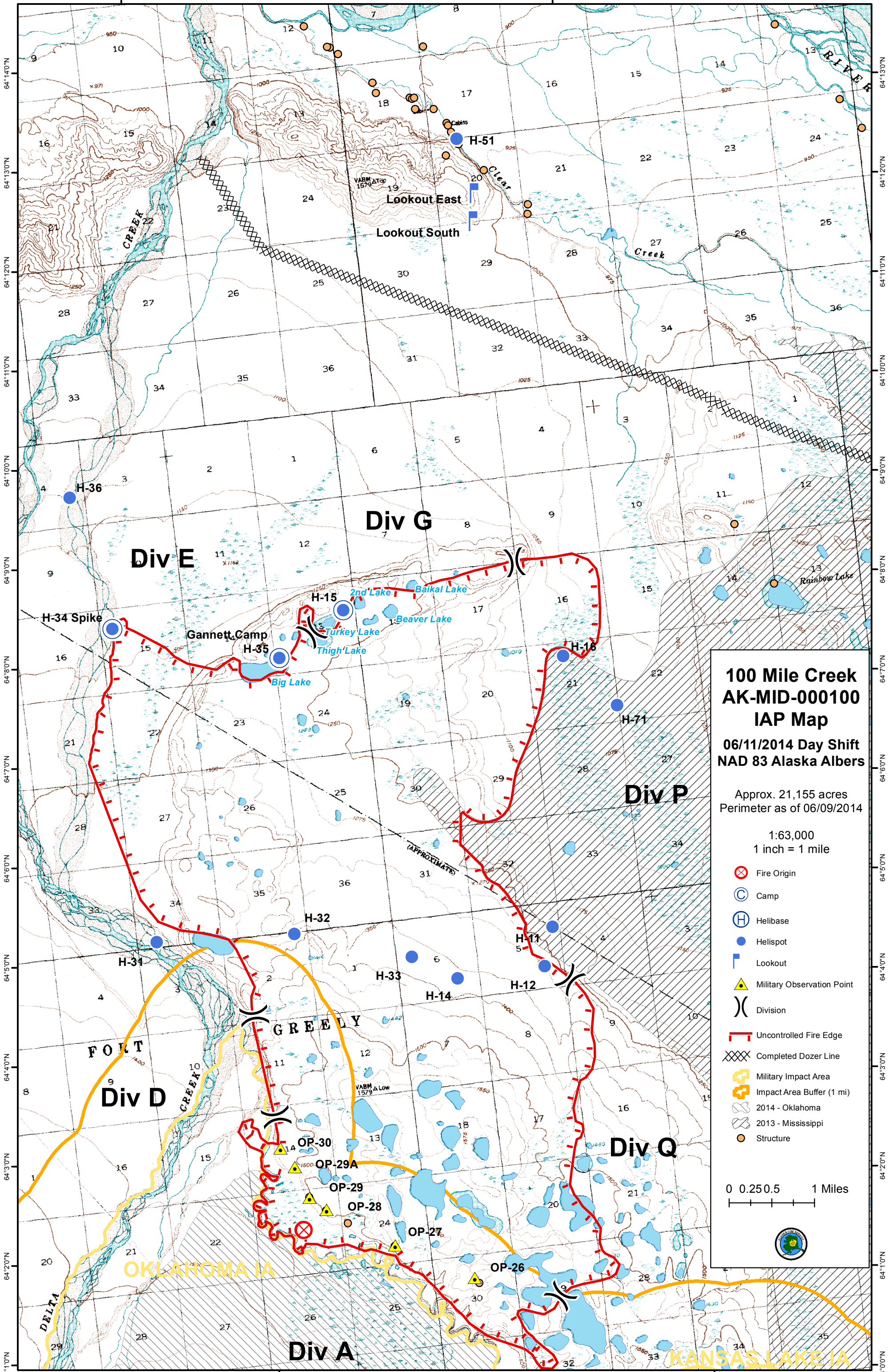


146°20'0"W

146°10'0"W



**100 Mile Creek
AK-MID-000100
IAP Map**
06/11/2014 Day Shift
NAD 83 Alaska Albers

Approx. 21,155 acres
Perimeter as of 06/09/2014

1:63,000
1 inch = 1 mile

- Fire Origin
- Camp
- Helibase
- Helispot
- Lookout
- Military Observation Point
- Division
- Uncontrolled Fire Edge
- Completed Dozer Line
- Military Impact Area
- Impact Area Buffer (1 mi)
- 2014 - Oklahoma
- 2013 - Mississippi
- Structure

0 0.25 0.5 1 Miles



146°20'0"W

146°10'0"W