

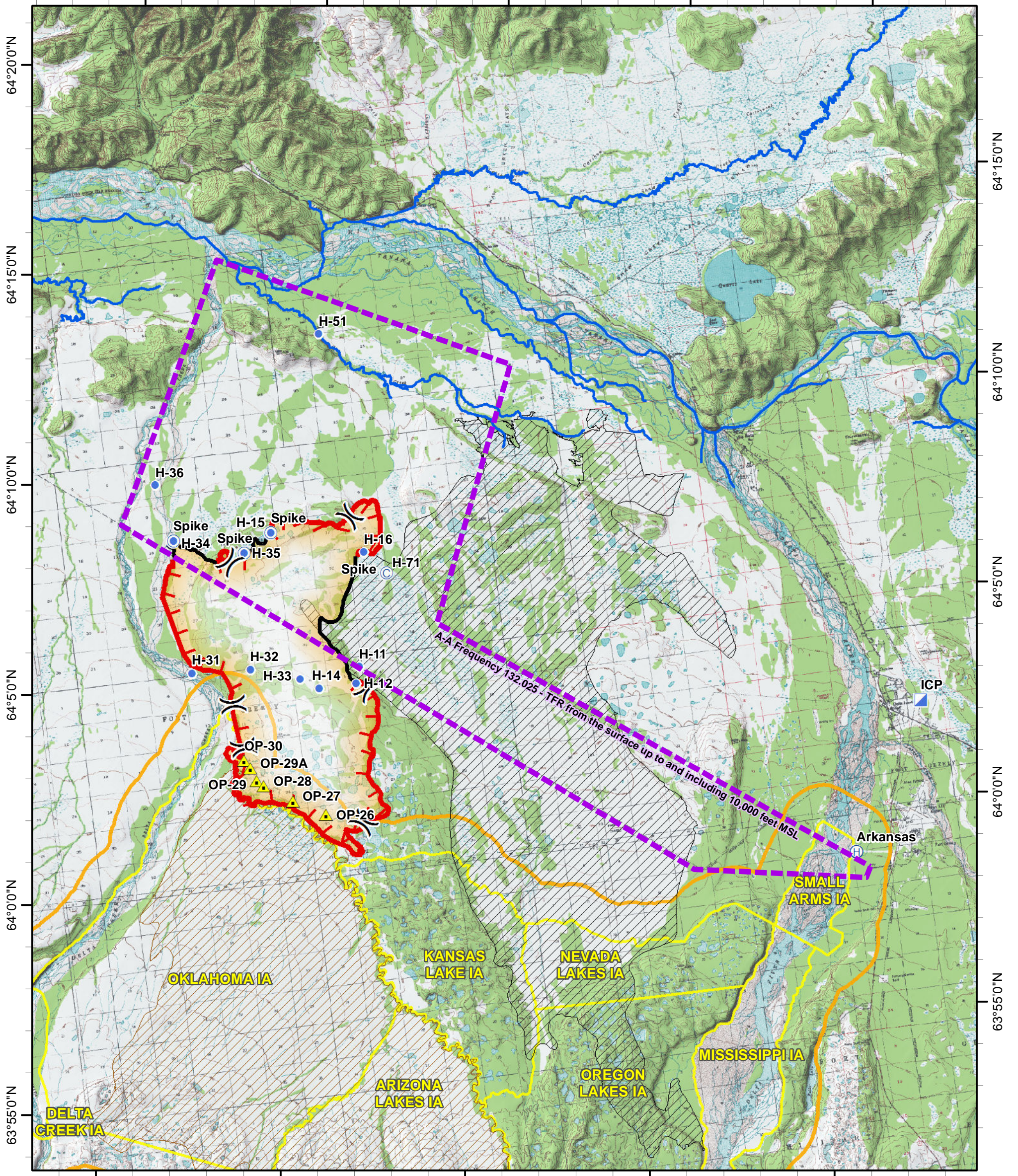


# Air Operations June 12, 2014

Approx 21,046 acres  
as of 6/11/14 1200 hrs

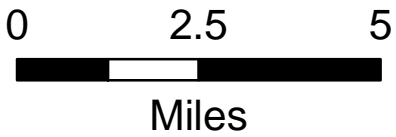
Alaska Albers  
NAD 83

146°20'0"W      146°10'0"W      146°0'0"W      145°50'0"W      145°40'0"W



146°30'0"W      146°20'0"W      146°10'0"W      146°0'0"W      145°50'0"W

- Uncontrolled Fire Edge
- Completed Line
- Anadromous Streams
- TFR 6-11-2014
- 2014 Oklahoma Range Rx
- 2013 Mississippi
- Military Impact Area
- Impact Area Buffer (1 mi)
- Camp
- Helibase
- Helispot
- Incident Command Post
- Other



Label	Lat North DDM	Long West DDM	Label	Lat North DDM	Long West DDM
Arkansas Helibase	63° 58.950'	145° 46.662'	H-35/Spike	64° 07.812'	146° 18.096'
H-11	64° 04.734'	146° 12.522'	H-36	64° 09.669'	146° 22.514'
H-12	64° 04.398'	146° 12.810'	H-51	64° 12.827'	146° 12.588'
H-14	64° 04.382'	146° 14.847'	H-71/Spike	64° 06.941'	146° 10.426'
H-15/Spike	64° 08.220'	146° 16.495'	OP-26	64° 01.350'	146° 15.264'
H-16	64° 07.500'	146° 11.538'	OP-27	64° 01.770'	146° 17.004'
H-31	64° 05.100'	146° 21.690'	OP-28	64° 02.208'	146° 18.492'
H-32	64° 05.022'	146° 18.492'	OP-29	64° 02.352'	146° 18.852'
H-33	64° 04.650'	146° 15.846'	OP-29A	64° 02.676'	146° 19.110'
H-34/Spike	64° 08.300'	146° 21.877'	OP-30	64° 02.880'	146° 19.386'