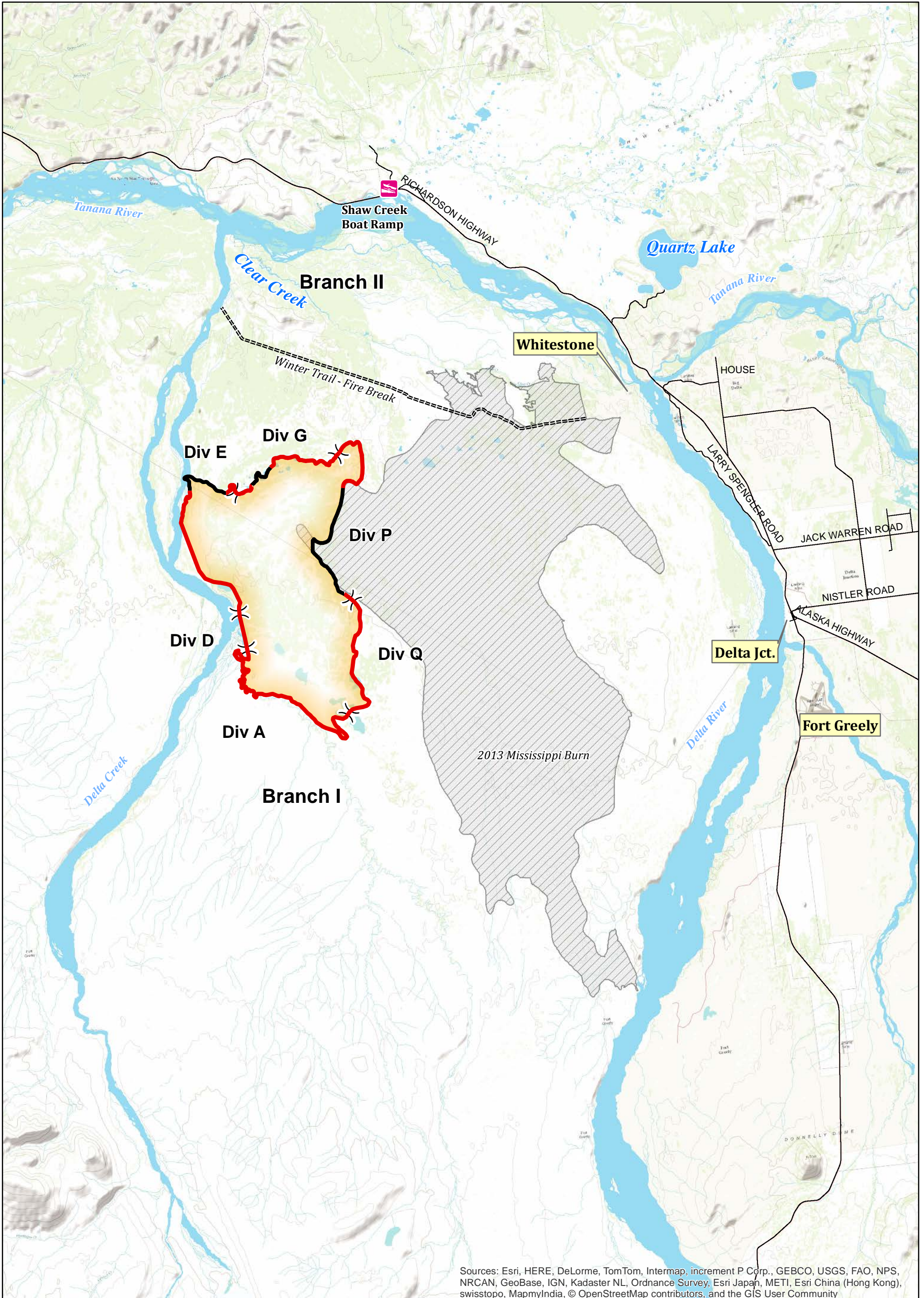
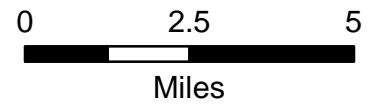


- Roads
- Winter Trail - Fire Break
- Uncontrolled Fire Edge
- Completed Line
- 2013 Mississippi Burn

100 Mile Creek Fire

June 13, 2014

Approx 21,046 acres
as of 6/11/14 1200 hrs



Sources: Esri, HERE, DeLorme, TomTom, Intermap, increment P Corp., GEBCO, USGS, FAO, NPS, NRCAN, GeoBase, IGN, Kadaster NL, Ordnance Survey, Esri Japan, METI, Esri China (Hong Kong), swisstopo, MapmyIndia, © OpenStreetMap contributors, and the GIS User Community