








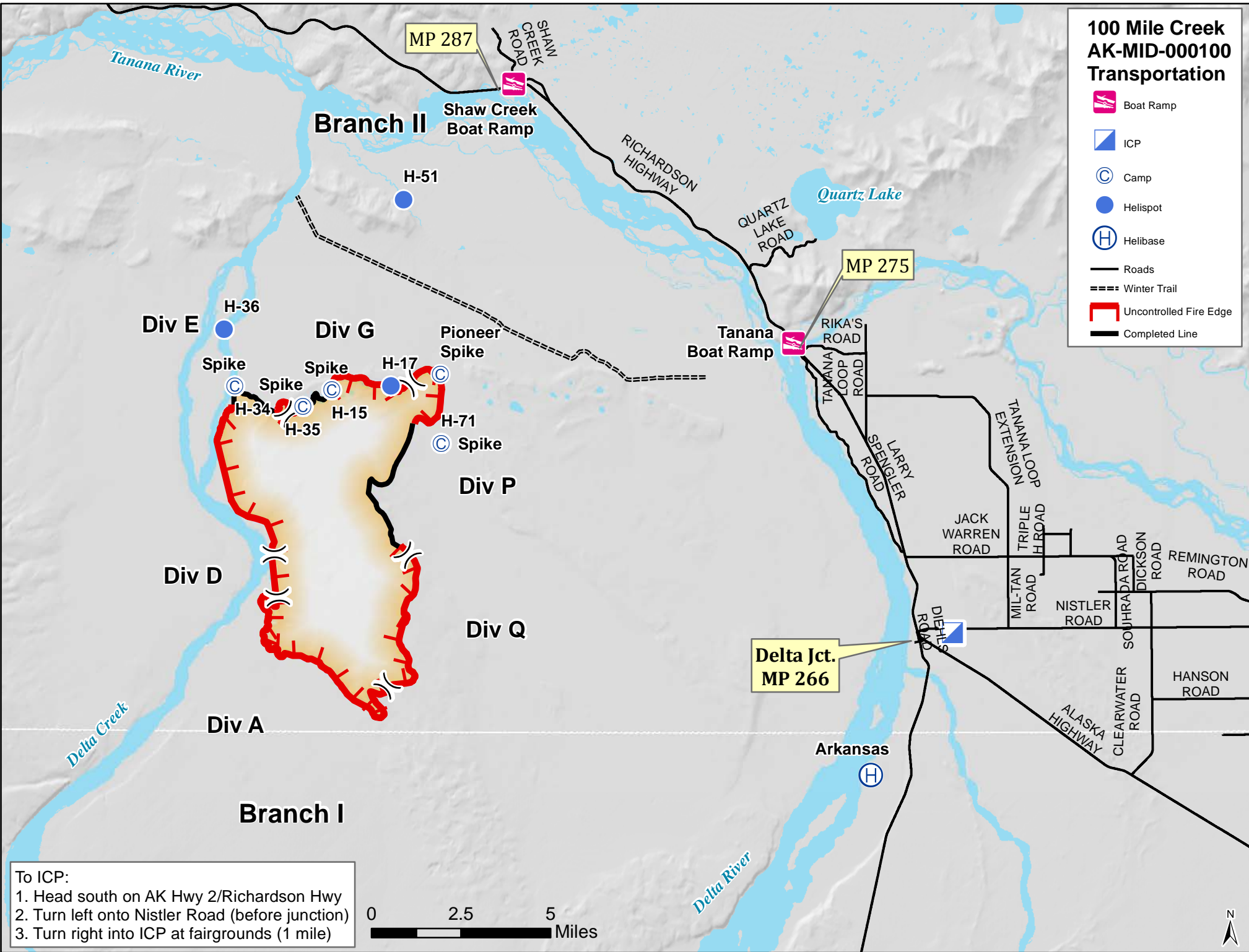


# 100 Mile Creek AK-MID-000100 Transportation

-  Boat Ramp
-  ICP
-  Camp
-  Helispot
-  Helibase
-  Roads
-  Winter Trail
-  Uncontrolled Fire Edge
-  Completed Line



To ICP:  
 1. Head south on AK Hwy 2/Richardson Hwy  
 2. Turn left onto Nistler Road (before junction)  
 3. Turn right into ICP at fairgrounds (1 mile)

