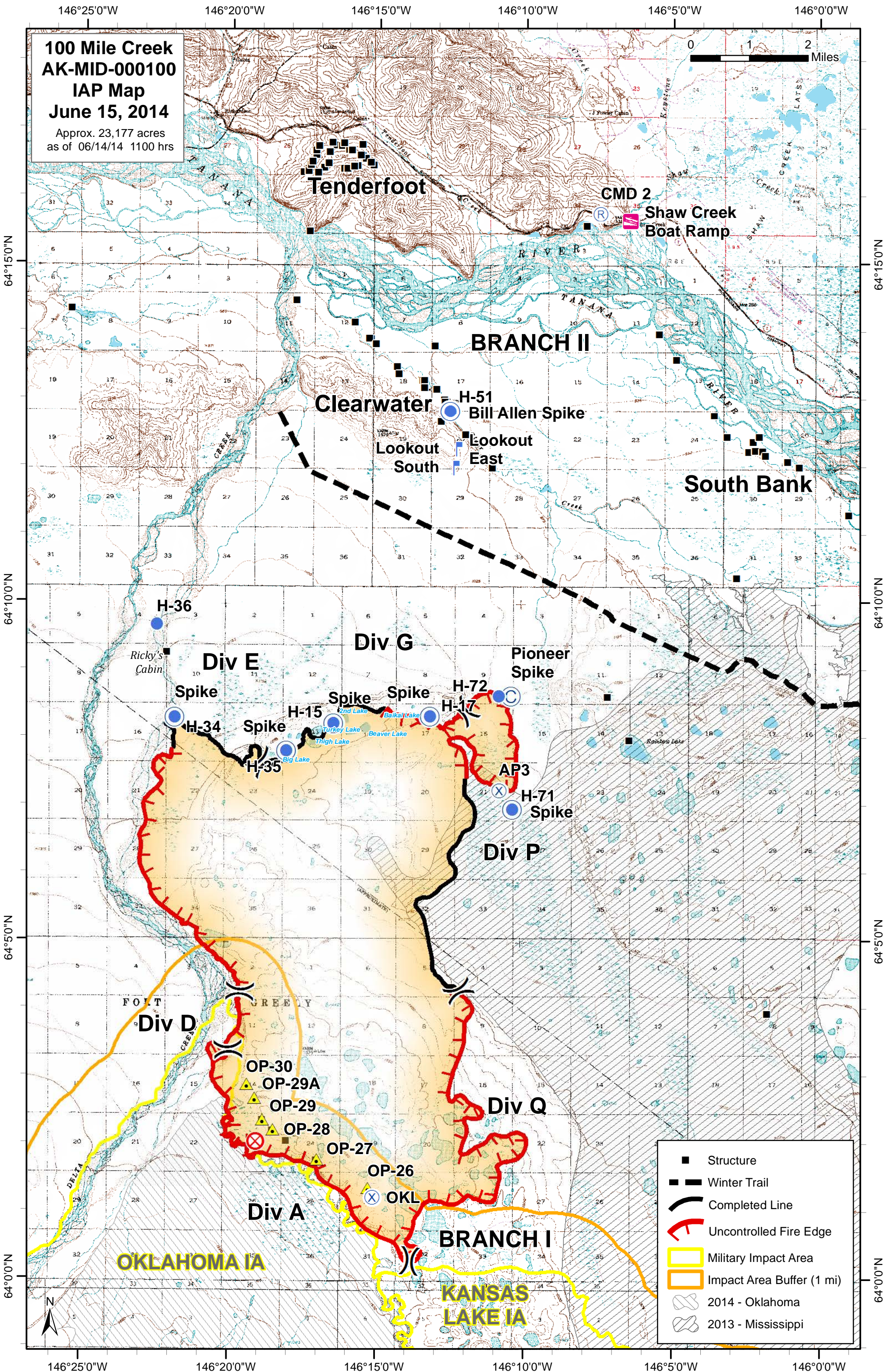


**100 Mile Creek
AK-MID-000100
IAP Map
June 15, 2014**

Approx. 23,177 acres
as of 06/14/14 1100 hrs



Tenderfoot

**CMD 2
Shaw Creek
Boat Ramp**

BRANCH II

Clearwater
H-51 Bill Allen Spike
Lookout South
Lookout East

South Bank

H-36

Div E
Spike

Div G

Pioneer Spike

H-34 Spike
H-35 Spike
H-15 Spike
H-17 Spike
H-72 Spike

Div P
AP3
H-71 Spike

Div D

OP-30
OP-29A
OP-29
OP-28
OP-27

Div Q

Div A
OKL

BRANCH I

OKLAHOMA IA

KANSAS LAKE IA

- Structure
- Winter Trail
- Completed Line
- Uncontrolled Fire Edge
- Military Impact Area
- Impact Area Buffer (1 mi)
- 2014 - Oklahoma
- 2013 - Mississippi

64°15'0"N

64°15'0"N

64°10'0"N

64°10'0"N

64°50'0"N

64°50'0"N

64°0'0"N

64°0'0"N

146°25'0"W

146°20'0"W

146°15'0"W

146°10'0"W

146°5'0"W

146°0'0"W