

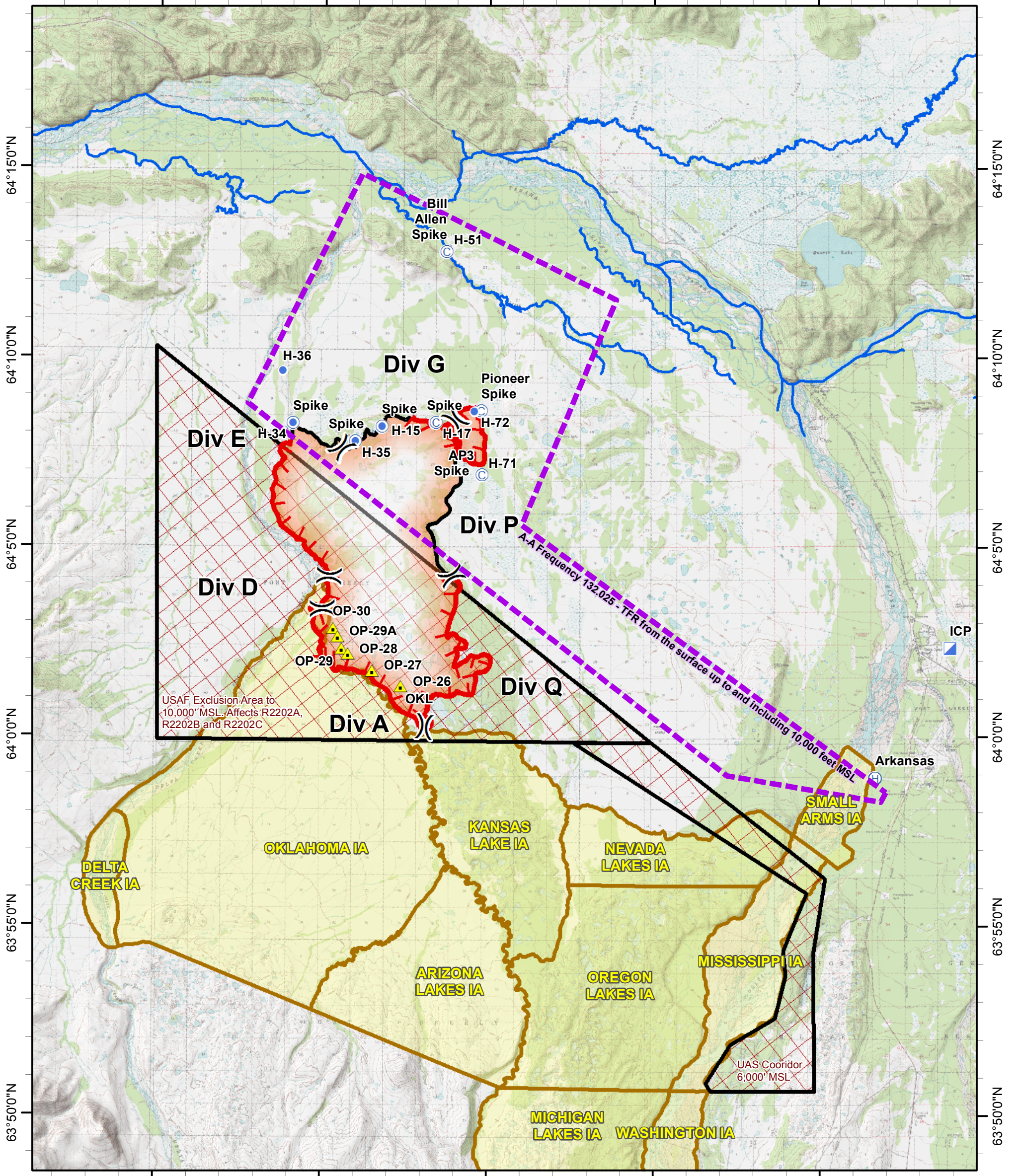


Air Operations June 16, 2014

Approx 23,177 acres
as of 6/14/14 1100 hrs

Alaska Albers
NAD 83

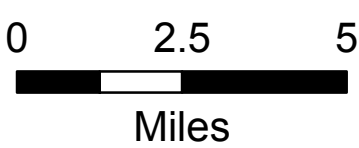
146°30'0"W 146°20'0"W 146°10'0"W 146°0'0"W 145°50'0"W



USAF Exclusion Area to
10,000' MSL, Affects R2202A,
R2202B and R2202C

UAS Corridor
6,000' MSL

- ⊙ Camp
- ⊕ Helibase
- Helispot
- ▣ Incident Command Post
- ▲ Other
- 🔴 Uncontrolled Fire Edge
- Completed Line
- 🌊 Anadromous Streams
- 🚫 TFR 6-11-2014
- ⊠ USAF Exclusion Area
- 🟡 Military Impact Area



Label	Lat North DDM	Long West DDM	Label	Lat North DDM	Long West DDM
Arkansas Helibase	63° 58.950'	145° 46.662'	Pioneer Spike	64° 08.620'	146° 10.483'
H-15/Spike	64° 08.220'	146° 16.495'	Bill Allen Spike	64° 12.827'	146° 12.588'
H-17/Spike	64° 08.325'	146° 13.226'	OP-26	64° 01.350'	146° 15.264'
H-34/Spike	64° 08.300'	146° 21.877'	OP-27	64° 01.770'	146° 17.004'
H-35/Spike	64° 07.812'	146° 18.096'	OP-28	64° 02.208'	146° 18.492'
H-36	64° 09.669'	146° 22.514'	OP-29	64° 02.352'	146° 18.852'
H-51	64° 12.827'	146° 12.588'	OP-29A	64° 02.676'	146° 19.110'
H-71/Spike	64° 06.941'	146° 10.426'	OP-30	64° 02.880'	146° 19.386'
H-72	64° 08.619'	146° 10.904'			