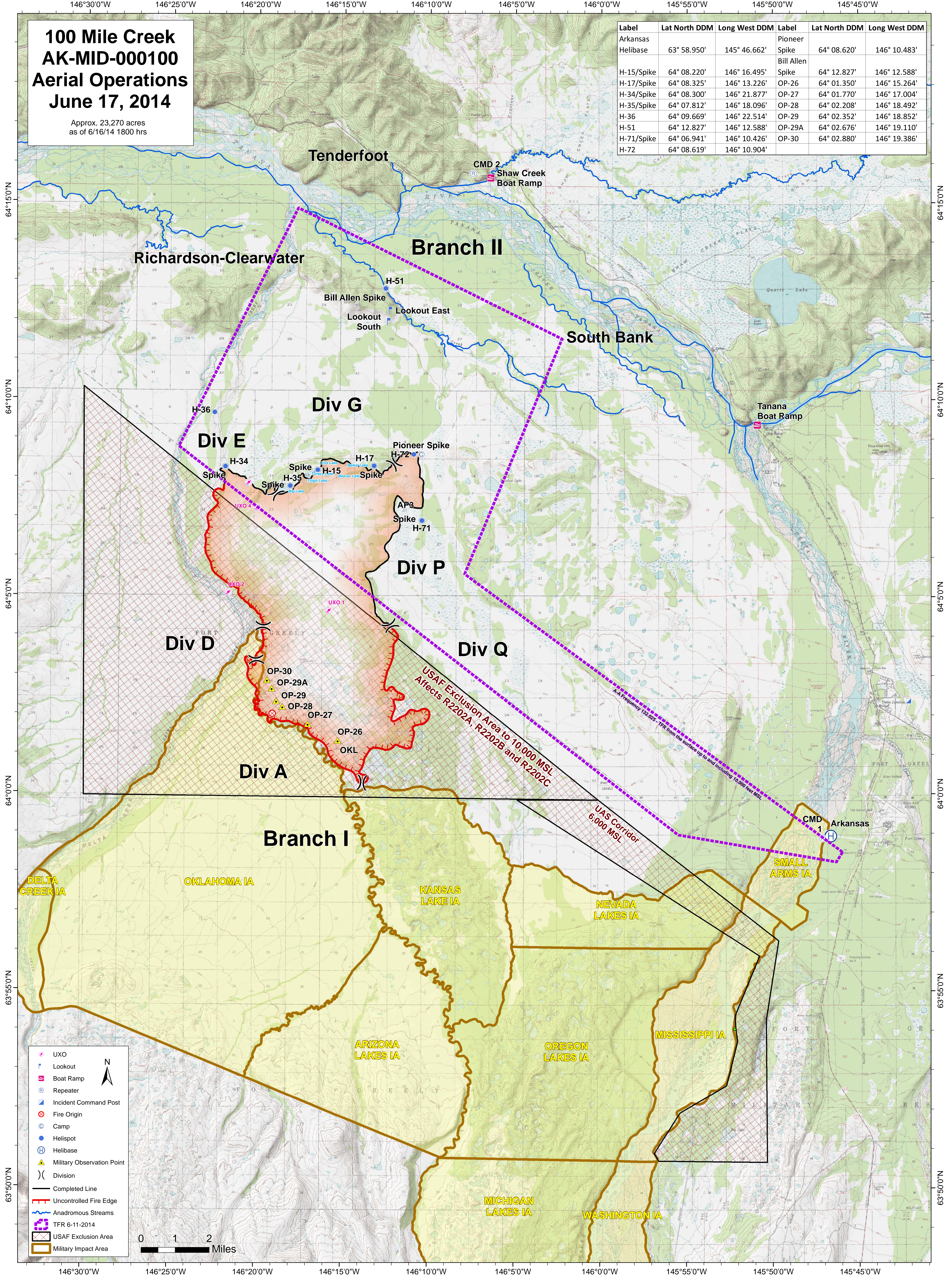


100 Mile Creek AK-MID-000100 Aerial Operations June 17, 2014

Approx. 23,270 acres
as of 6/16/14 1800 hrs

Label	Lat North DDM	Long West DDM	Label	Lat North DDM	Long West DDM
Arkansas Helibase	63° 58.950'	145° 46.662'	Pioneer Spike	64° 08.620'	146° 10.483'
H-15/Spike	64° 08.220'	146° 16.495'	Bill Allen	64° 12.827'	146° 12.588'
H-17/Spike	64° 08.325'	146° 13.226'	Spike	64° 01.350'	146° 15.264'
H-34/Spike	64° 08.300'	146° 21.877'	OP-26	64° 01.770'	146° 17.004'
H-35/Spike	64° 07.812'	146° 18.096'	OP-27	64° 02.208'	146° 18.492'
H-36	64° 09.669'	146° 22.514'	OP-28	64° 02.352'	146° 18.852'
H-51	64° 12.827'	146° 12.588'	OP-29	64° 02.676'	146° 19.110'
H-71/Spike	64° 06.941'	146° 10.426'	OP-29A	64° 02.880'	146° 19.386'
H-72	64° 08.619'	146° 10.904'	OP-30		



Div D

Div E

Div G

Div P

Div Q

Div A

Branch I

Branch II

South Bank

DELTA CREEK IA

OKLAHOMA IA

KANSAS LAKE IA

NEVADA LAKES IA

SMALL ARMS IA

ARIZONA LAKES IA

OREGON LAKES IA

MISSISSIPPI IA

MICHIGAN LAKES IA

WASHINGTON IA

Tenderfoot

Richardson-Clearwater

CMD 2
Shaw Creek Boat Ramp

Tanana Boat Ramp

CMD 1
Arkansas

USAF Exclusion Area to 10,000 MSL
Affects R2202A, R2202B and R2202C

UAS Corridor
6,000 MSL

- UXO
- Lookout
- Boat Ramp
- Repeater
- Incident Command Post
- Fire Origin
- Camp
- Helispot
- Helibase
- Military Observation Point
-) (Division
- Completed Line
- Uncontrolled Fire Edge
- Anadromous Streams
- TFR 6-11-2014
- USAF Exclusion Area
- Military Impact Area

