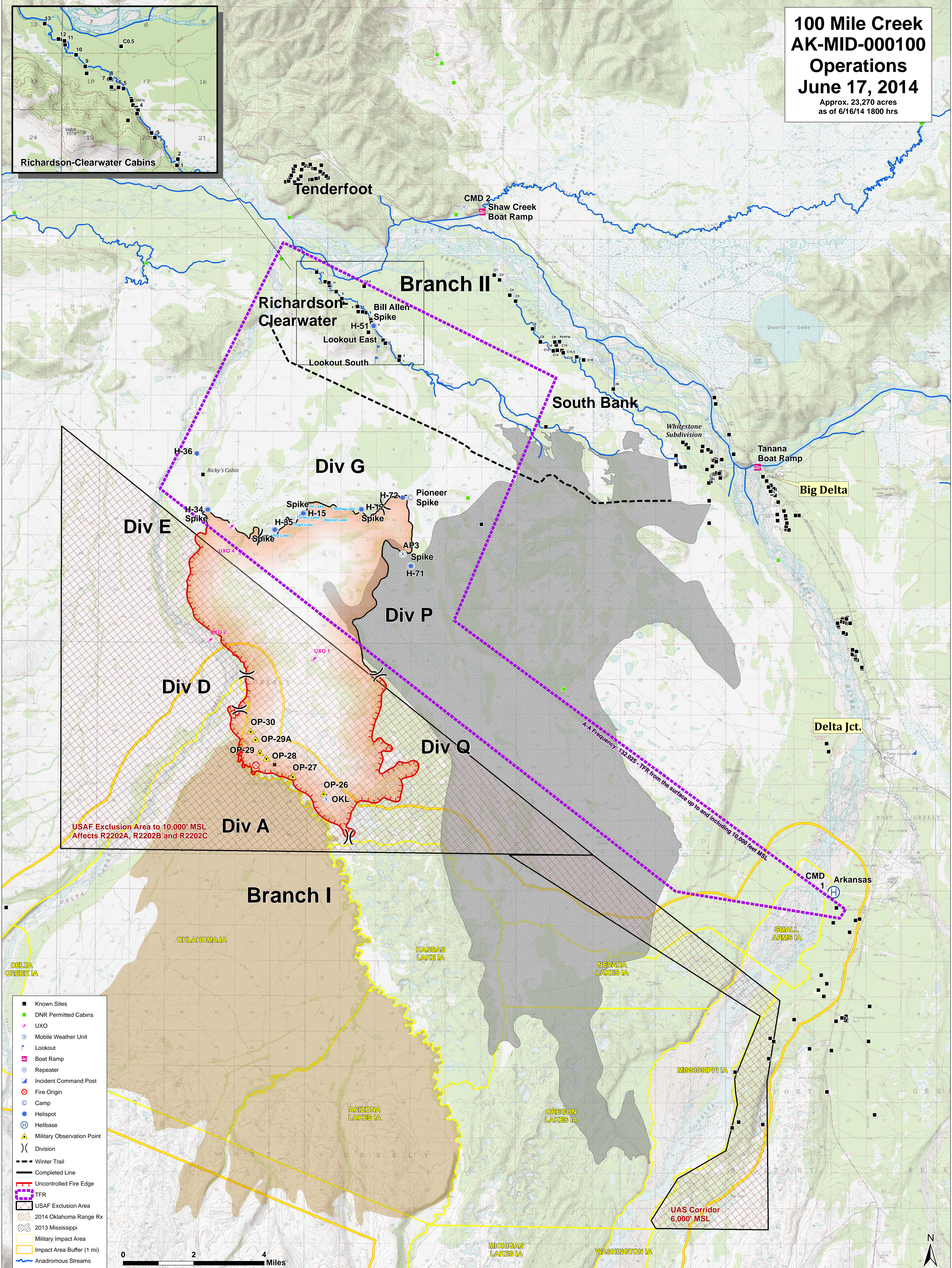
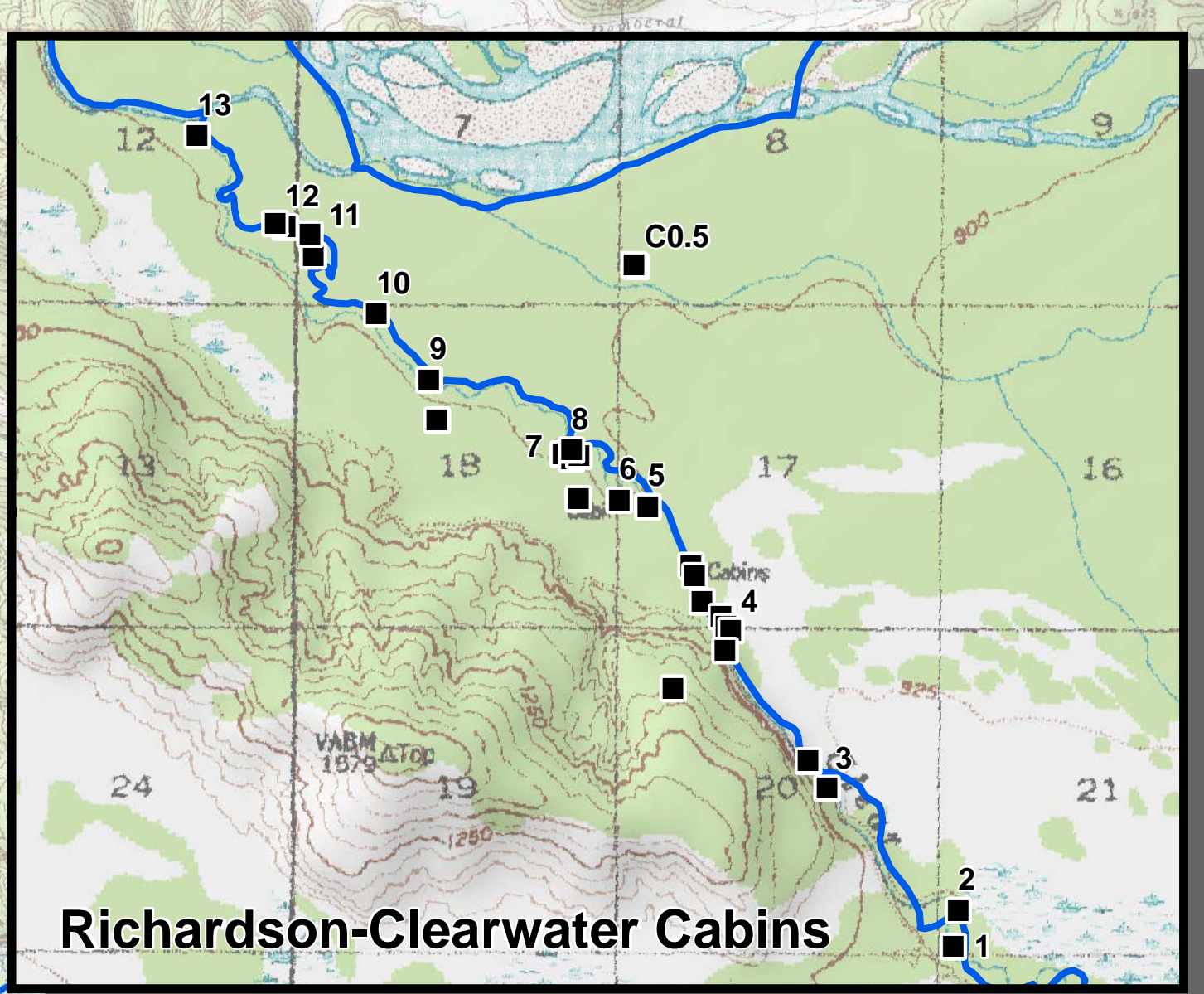


**100 Mile Creek  
AK-MID-000100  
Operations  
June 17, 2014**  
Approx. 23,270 acres  
as of 6/16/14 1800 hrs



USAF Exclusion Area to 10,000' MSL  
Affects R2202A, R2202B and R2202C

UAS Corridor  
6,000' MSL

- Known Sites
- DNR Permitted Cabins
- ⊗ UXO
- ⊗ Mobile Weather Unit
- ⊗ Lookout
- ⊗ Boat Ramp
- ⊗ Repeater
- ⊗ Incident Command Post
- ⊗ Fire Origin
- ⊗ Camp
- ⊗ Helispot
- ⊗ Helibase
- ⊗ Military Observation Point
- ) Division
- Winter Trail
- Completed Line
- Uncontrolled Fire Edge
- TFR
- USAF Exclusion Area
- 2014 Oklahoma Range Rx
- 2013 Mississippi
- Military Impact Area
- Impact Area Buffer (1 mi)
- Anadromous Streams

