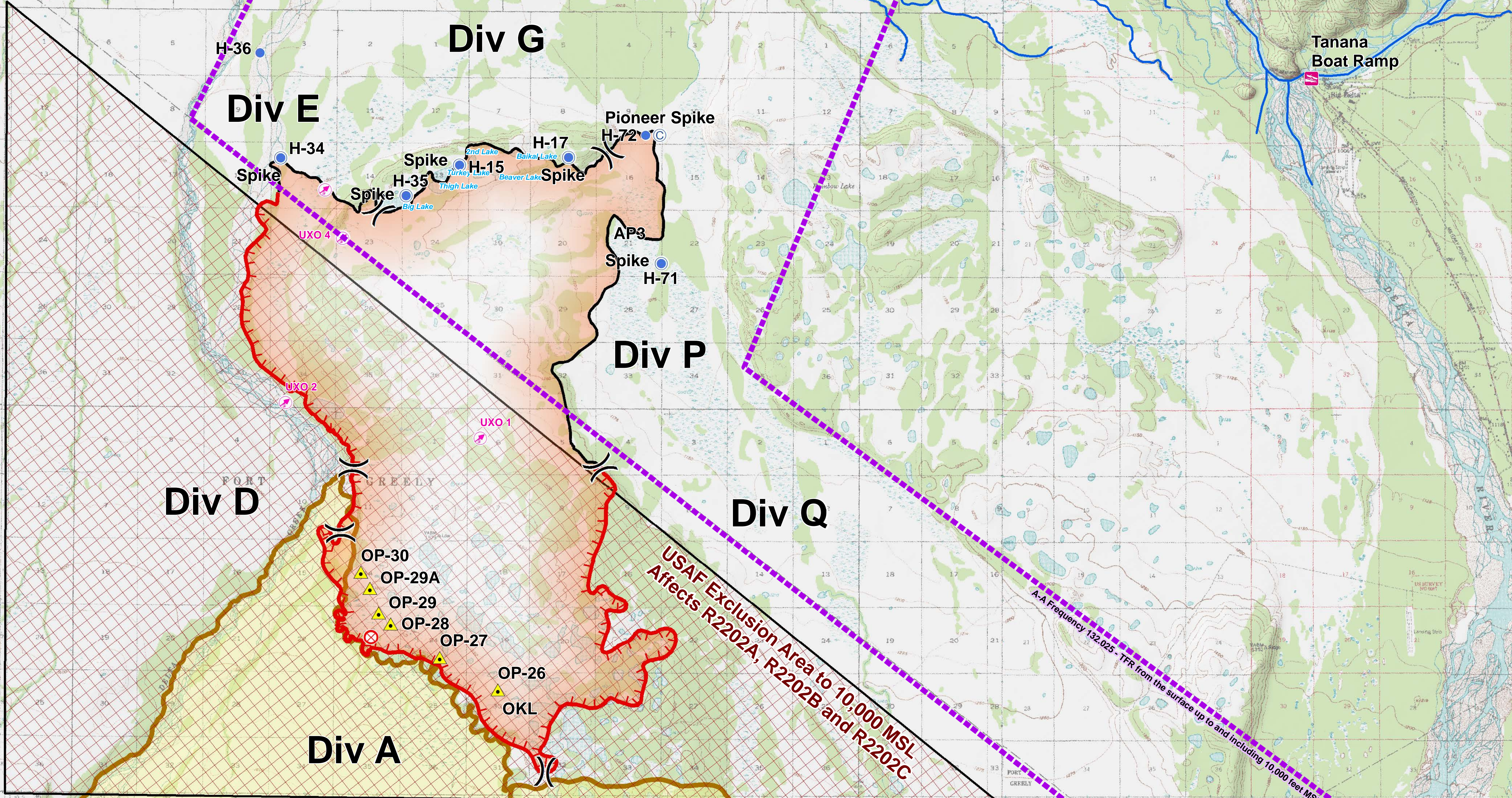
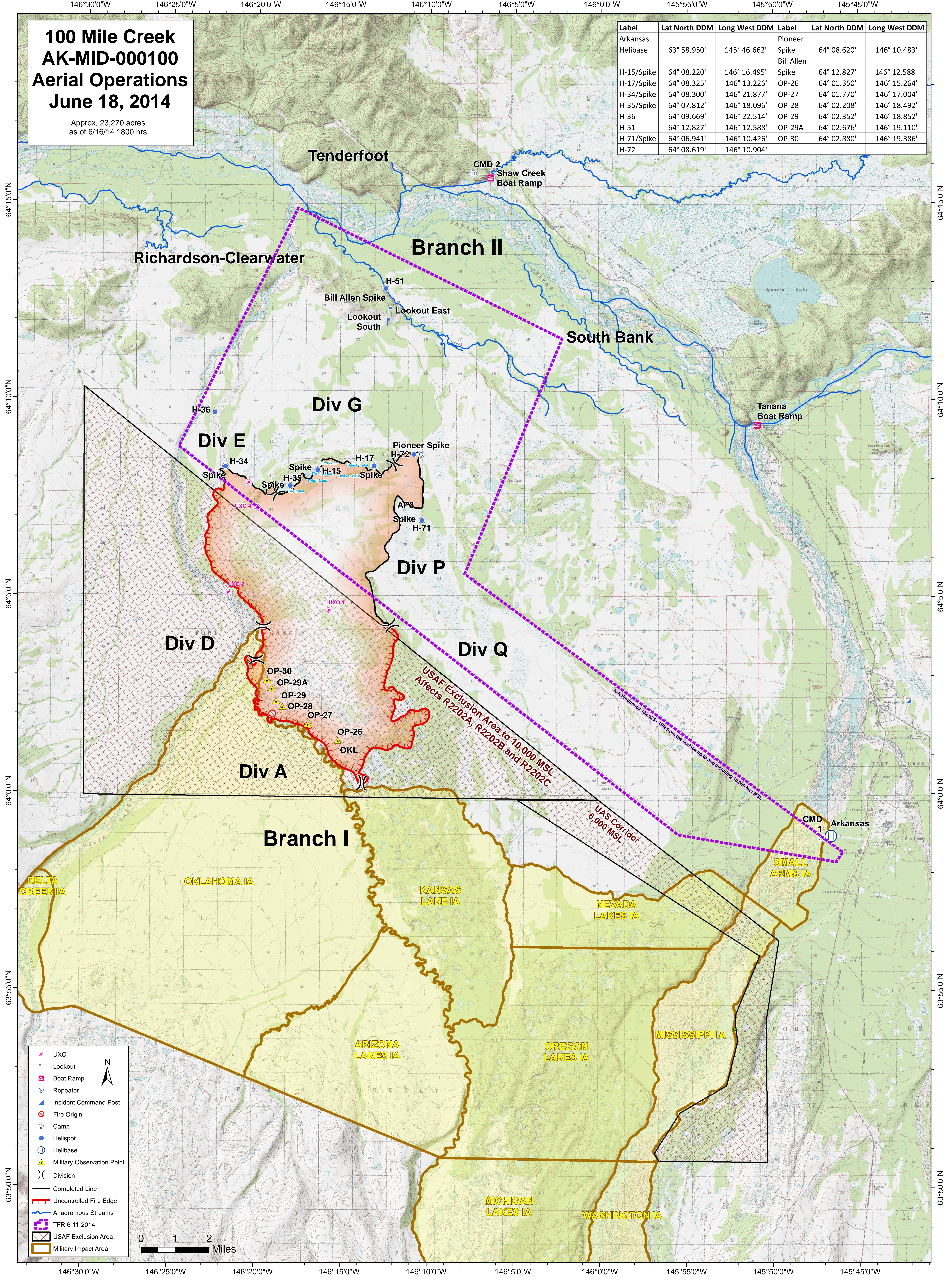


100 Mile Creek AK-MID-000100 Aerial Operations June 18, 2014

Approx. 23,270 acres
as of 6/16/14 1800 hrs

Label	Lat North DDM	Long West DDM	Label	Lat North DDM	Long West DDM
Arkansas Helibase	63° 58.950'	145° 46.662'	Pioneer Spike	64° 08.620'	146° 10.483'
H-15/Spike	64° 08.220'	146° 16.495'	Bill Allen	64° 12.827'	146° 12.588'
H-17/Spike	64° 08.325'	146° 13.226'	Spike	64° 01.350'	146° 15.264'
H-34/Spike	64° 08.300'	146° 21.877'	OP-26	64° 01.770'	146° 17.004'
H-35/Spike	64° 07.812'	146° 18.096'	OP-27	64° 02.208'	146° 18.492'
H-36	64° 09.669'	146° 22.514'	OP-28	64° 02.352'	146° 18.852'
H-51	64° 12.827'	146° 12.588'	OP-29	64° 02.676'	146° 19.110'
H-71/Spike	64° 06.941'	146° 10.426'	OP-29A	64° 02.880'	146° 19.386'
H-72	64° 08.619'	146° 10.904'	OP-30		



- UXO
- Lookout
- Boat Ramp
- Repeater
- Incident Command Post
- Fire Origin
- Camp
- Helispot
- Helibase
- Military Observation Point
-) (Division
- Completed Line
- Uncontrolled Fire Edge
- Anadromous Streams
- TFR 6-11-2014
- USAF Exclusion Area
- Military Impact Area

0 1 2 Miles