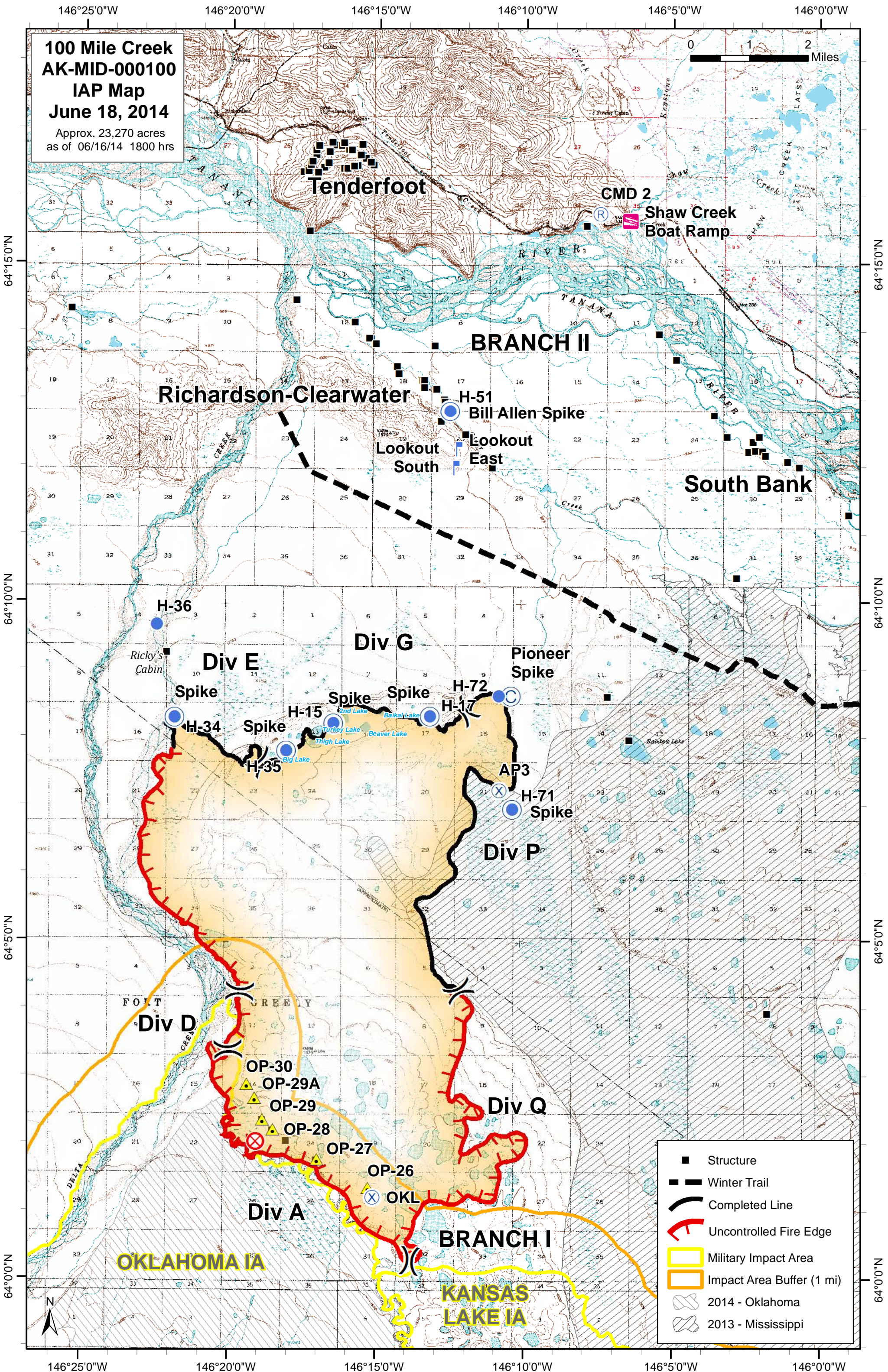


**100 Mile Creek  
AK-MID-000100  
IAP Map  
June 18, 2014**

Approx. 23,270 acres  
as of 06/16/14 1800 hrs



**Tenderfoot**

**CMD 2  
Shaw Creek  
Boat Ramp**

**BRANCH II**

**Richardson-Clearwater**

**H-51  
Bill Allen Spike**

**Lookout  
South**

**Lookout  
East**

**South Bank**

**H-36**

**Div G**

**Div E**

**Pioneer  
Spike**

**Spike**

**Spike**

**Spike**

**H-72**

**H-17**

*Ricky's  
Cabin*

**H-34**

**Spike**

**H-15**

**Spike**

**Spike**

**H-71**

**AP3**

**H-71  
Spike**

**Div P**

**Div D**

**OP-30**

**OP-29A**

**OP-29**

**OP-28**

**OP-27**

**OP-26**

**OKL**

**Div Q**

**Div A**

**BRANCH I**

**OKLAHOMA IA**

**KANSAS  
LAKE IA**

- Structure
- Winter Trail
- Completed Line
- Uncontrolled Fire Edge
- Military Impact Area
- Impact Area Buffer (1 mi)
- 2014 - Oklahoma
- 2013 - Mississippi

64°15'0"N

64°15'0"N

64°10'0"N

64°10'0"N

64°50'0"N

64°50'0"N

64°0'0"N

64°0'0"N

146°25'0"W

146°20'0"W

146°15'0"W

146°10'0"W

146°5'0"W

146°0'0"W